

MUSEUM



SEPTEMBER  
OCTOBER  
NOVEMBER

02

A Quarterly Guide to Exhibitions and Events  
at Auckland War Memorial Museum

ISSUE 92



QUARTERLY



SUSTAINING SPONSOR



Auckland War Memorial Museum  
Domain Drive Auckland Domain

Open 10am – 5pm daily  
Except Christmas Day  
and Anzac morning.

Admission is by donation.  
\$5 is appreciated.  
Children, of course, are free.  
Charges may apply to  
special exhibitions.

Infoline: 09 306 7067  
Enquiries: 09 309 0443  
Website: [www.akmuseum.org.nz](http://www.akmuseum.org.nz)

Library: 09 306 7070 extn 687 or 686  
Open Monday – Friday, 1pm – 5pm

Museum Store: 09 309 2580

Auckland Museum Institute:  
09 306 7070 extn 883

Venue hire: 09 306 7056

Services to schools: 09 306 7040



# Director's message

This October, our Museum celebrates its launching 150 years ago. Before the major businesses of Auckland were established, before our newspaper was born, before – even – a city council was established, Auckland opened a museum.

To mark this historic milestone the Museum will open its major exhibition of the year, *Sir Edmund Hillary: Everest and Beyond*. The convergence of the Museum's sesquicentennial with the 50 year jubilee of Sir Edmund's ascent of Everest, presented us with the perfect opportunity to celebrate the remarkable life of this great son of Auckland, the most well known and highly regarded of all New Zealanders.

And, 150 years since we opened shop in a humble cottage, we are underway with pre-construction work on the Museum's grand courtyard project, completing the development of the Museum within its current building. The Government's contribution of 26.5 million dollars (including GST) was the catalyst necessary to propel the dream into reality. Noel Lane Architects, the team responsible for the magnificent first stage of the Museum's refurbishment, will again provide architectural services. Construction is expected to commence around September 2003.

These are exciting times for your Museum – acknowledgement and celebration of a century and a half of collecting, exhibiting and interpreting our human and natural history – and ambitious plans for new amenities and new spaces.

Dr T.L. Rodney Wilson  
Director



## A guide to Auckland Museum

A new A5 guide to Auckland Museum is now available from The Museum Store and retails at \$19.95.

## It never rains but it pours

The Store has introduced a Museum-branded golf umbrella. The umbrella is decorated with the Museum's 150th birthday logo and retails at \$35.

# news in brief

## Limited edition prints celebrate Museum's birthday

In celebration of the Museum's 150th birthday, the Museum Circle has commissioned limited edition prints from five Auckland artists. The images by Rick Killeen, Gretchen Albrecht, John Pule, Dick Frizzell and Robert Ellis, are based on the Museum's book, *150 Treasures*. To register your interest, contact Peter Webb at [auctions@webbs.co.nz](mailto:auctions@webbs.co.nz).

## Returned servicewomen gift Book of Commemoration

The Auckland District Returned Servicewomen's Association has established a memorial fund supported by servicewomen, RSA's and the Althea Goldsmith Memorial Fund. This unique Book of Commemoration lists New Zealand servicewomen who have served overseas in times of conflict. It will be presented to the Museum as a birthday gift.



## Friends of Applied Arts formed

The Museum Circle and curator Louis le Vaillant have established a Friends of the Applied Arts group to further the understanding of the Museum's collections and acquisitions. For more information, contact Louis Le Vaillant on 306 7058.

## Joint lecture series established

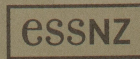
Auckland Museum, the Museum Institute and the University of Auckland have established a joint lecture series entitled *The Elements: Earth, Air, Water, Fire*. For details see page 9. To book, telephone 373 7599 ext 7831.

## Montana celebrates 21st

Montana Wines, Auckland Museum's sustaining sponsor, also celebrates a special birthday this year; Lindauer, Montana's most popular wine, turns 21.

## New ESSNZ brand promotes cultural events

ESSNZ, a new umbrella marketing strategy supported by Government, will help to promote cultural activities during the America's Cup. For events on offer, visit the ESSNZ website at [www.essnz.com](http://www.essnz.com)

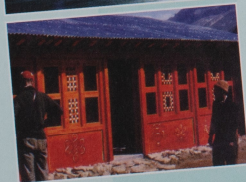
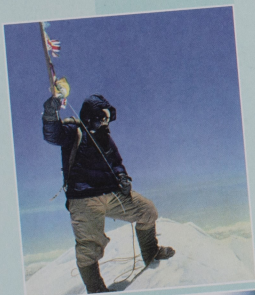


# SIR EDMUND HILLARY

## EVEREST AND BEYOND

CELEBRATING THE ACHIEVEMENTS OF A GREAT

Auckland Museum is to present an exhibition on the life and achievements of Sir Edmund Hillary. The exhibition, which opens on Labour weekend, has been organised by the Museum in association with National Geographic. In 2003 it will travel to the United States, Australia and Japan – the first major New Zealand exhibition to do so since Te Maori in the mid-1980s.



Curator of the show, Alexa Johnston says the exhibition will be the first in a series of global events marking the 50th anniversary of the first ascent of Everest. "It is fitting that the celebrations of Sir Edmund's achievement should begin here in his home town of Auckland," she says.

*Sir Edmund Hillary: Everest and Beyond*, will explore all aspects of Sir Edmund's life, from his work as a bee-keeper and early climbs in the Southern Alps, to his ascent of Everest, tractor journey to the South Pole and his River Ganges jet boat pilgrimage.

For many, climbing the world's highest mountain would have been the pinnacle of their career. For Sir Edmund, it was just the beginning; the most challenging and satisfying achievements were yet to come with the establishment of health, education and environmental programmes in Nepal.

NEW ZEALANDER

Adults \$12, concessions \$9, children \$6

In 1961, Sir Edmund asked his Sherpa colleagues what he could do for their community. Their reply: 'we need a school for our children', was the catalyst for the next 40 years in which Hillary's Himalayan Trust was to build schools, hospitals, airstrips and bridges, put in water pipes and help restore Buddhist monasteries.

Sir Edmund's story will be told through objects and photographs from the 1953 expedition, breathtaking panoramic landscapes of the Himalayas and furnished Sherpa buildings including a schoolhouse, kitchen and a Buddhist chapel. Priceless objects include the ice axe which Sir Edmund used on Everest, along with gifts, honours and tributes from all over the world.

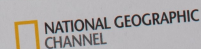
"This will be a rare opportunity to gain an insight into Sir Edmund's life work," says Alexa. "It's time to celebrate our national hero."



Above: Sir Edmund Hillary, 1955  
Edward J. Halliday  
114.5 x 87.5 cm  
oil on canvas  
Auckland War Memorial Museum

Opposite: Tenzing Norgay, *Man of Everest*, 1955.  
Antartica - *Trans Antartic Expedition*, 1957 -58  
*Schoolhouse in the Clouds*, 1964 Nepal

On display from 26 Oct until 28 Feb 2009





The 22 contributors use waste materials such as beer cans, tea bags, glasses, tyres and rubber gloves - objects that already have an identity and history of their own - as the basis of their design. Whilst the work of the different artists ranges from sculpture, furniture, costumes, chandeliers and ornaments to textiles, jewellery and tableware, the artists are linked by their fascination with creating a new life from used and discarded objects.

Curator Anna Champeney, from Craftspace Touring, Birmingham describes the designers as effectively 'turning garbage into gold'. They are, she says "breathing new life into what was lifeless, creating permanence in something designed as temporary."

# Reclaimed the art of rubbish

**On 15 November, Auckland Museum opens a witty and inventive exhibition exploring the use of recycled materials in contemporary British design.**

**Reclaimed: Recycling in Contemporary British Craft and Design showcases the work of a new generation of British artists who recycle everyday objects.**

With the support of the British Council, contributing artist Eyv Saunders will be in Auckland during the *Reclaimed* season. Saunders, an exponent of traditional hand-hooking, creates beautiful and ornate objects from recycled jumble materials and will demonstrate her technique in a series of workshops during November. See 'What's up on the Hill' on page 9 for details.

Also on display will be the winning entries from 2002's *Trash to Fashion Awards* run by the Waitakere City Council. The Awards comprise a show fusing art, fashion and performance and encourage the reuse of everyday rubbish.

*Reclaimed: Recycling in Contemporary British Craft and Design* is organised and brought to New Zealand by the British Council, and toured by Exhibition Services.



ON DISPLAY FROM 15 NOVEMBER 2002 UNTIL 21 JANUARY 2003



"Would you ask Mr Holyoake if he'd come in now, please?"

# Prime Min - the cartoons of Gordon Minhinnick

Opening on 11 October is the second in a series of pictorial exhibitions curated in association with the New Zealand Herald. *Prime Min* celebrates the work of Herald cartoonist Sir Gordon Minhinnick.

Minhinnick, who was affectionately known by his colleagues as 'Min', satirised New Zealand politics and in particular prime ministers, for over 50 years as the Herald's chief cartoonist.

The exhibition covers caricatures from Gordon Coates to David Lange.

At his retirement, Min said that the most memorable prime ministers he'd drawn were Bob Semple, Walter Nash, Peter Fraser, Sid Holland and Sir Keith Holyoake: "They were strong cartoon characters, strong characters in themselves, positive characters, and eminently desirable as cartoon subjects. They took it in very good part," he said.

It was often simple things which gave Min his ideas. When Bob Semple talked about giving people their 'running shoes', Min hung him with trainers for years. When Walter Nash told an audience during the 1940s that he found acid drops a good

substitute for cigarettes, Min seldom showed him without a bag of acid drops.

In later years Min also had fun with Norman Kirk and Bill Rowling - and not least, Rob Muldoon. One of Min's great creations was the 'Buldoon' and right alongside it was often Tom the Cat who bore an unmistakable resemblance to Sir Tom Skinner.

Gordon Minhinnick was born in England, emigrating to New Zealand in his late teens. Initially a student of architecture, in 1930 he joined the Herald where he was to stay until retiring in 1976. He continued to draw for the Herald until 1987.

2002 is the centenary of Sir Gordon's birth. Though many of his original cartoons went to private buyers, the bulk of his Herald collection is now held by Auckland Museum.



[nzherald.co.nz](http://nzherald.co.nz)

On Display From 11 Oct 02 Until 18 Jan 03

More than a Mummy, the Museum's 150th birthday show, has a special new curio on display—a cabinet of hand-carved kauri gum.

The cabinet, which was created by immigrant Scotsman John Alexander McKniven, includes over 230 pieces of individually crafted kauri resin and was made just after World War One.

Objects include a whaling tableau, miniature books, shells, bottles and gravestones.

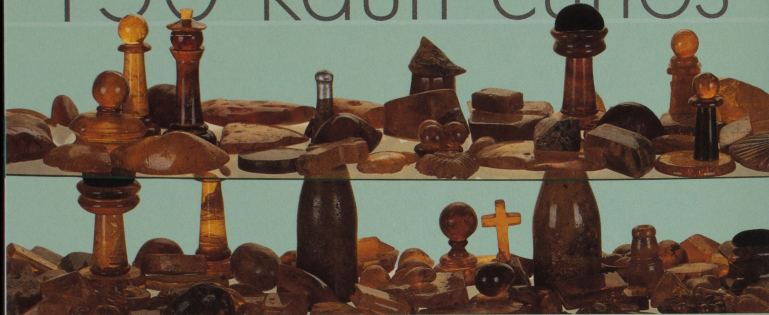
Curator, Carol Diebel says the cabinet was selected because it reflects the nature of the exhibition. "We wanted the exhibition to be like a cabinet of

curiosities and the kauri gum is exactly that. Kauri is also so 'New Zealand'," she says.

Museum conservator Merv Hutchinson says the cabinet took over 80 hours of work to prepare for display. "The kauri gum is incredibly fragile. Even the vibration of transporting the case could have broken the kauri and glass."

Kauri gum is the resin from New Zealand's most famous native tree and was an important export for New Zealand in the 19th century. It was used in the manufacture of a range of products, including denture molding, candles, varnishes and fire-lighters.

## 150 kauri curios



MORE THAN A MUMMY - 150 YEARS OF COLLECTING IS GENEROUSLY SUPPORTED BY NZI INSURANCE AND IS ON DISPLAY UNTIL 31 JANUARY 2003.



## Museum hosts Wallace Arts Awards

Winner 2001  
Peter Gibson Smith  
750 - Painting, 2001



On 7 September the Museum will host the Wallace Art Awards, New Zealand's longest-running contemporary art awards.

First established 11 years ago by the James Wallace Charitable Arts Trust, the awards recognise contemporary painting, sculpture and photography and play a significant role in promoting and supporting contemporary New Zealand art.

The awards will be presented, and the exhibition opened, by Dame Cath Tizard on 7 September.

THE EXHIBITION FINALISTS WILL BE ON DISPLAY UNTIL OCTOBER 2002

# Museum to open revamped Weird & Wonderful

WEIRD & WONDERFUL IS DUE TO OPEN ON 16 NOVEMBER

The Museum is to open a fabulous new Weird & Wonderful discovery centre with a day family activities.

Weird & Wonderful closed in May for a major birthday refurbishment.

The Centre, which first opened in 1994, set a new benchmark for Museum learning centres, won a series of awards and has been the model for discovery centre learning. Around five million people are estimated to have visited the Centre since it opened.

Unique in its innovative hands-on approach, the new Weird & Wonderful will retain many of the old Centre's favourite features, including the much loved beehive and live insect displays.

Discovery Centre designer Rick Pearson, is the creative force behind the renewal. His vision began by designing the first Weird and Wonderful, followed by the Museum's 1997 sister centre, Treasures & Tales.

"The challenge is in making what has already worked, work even better," says Rick.

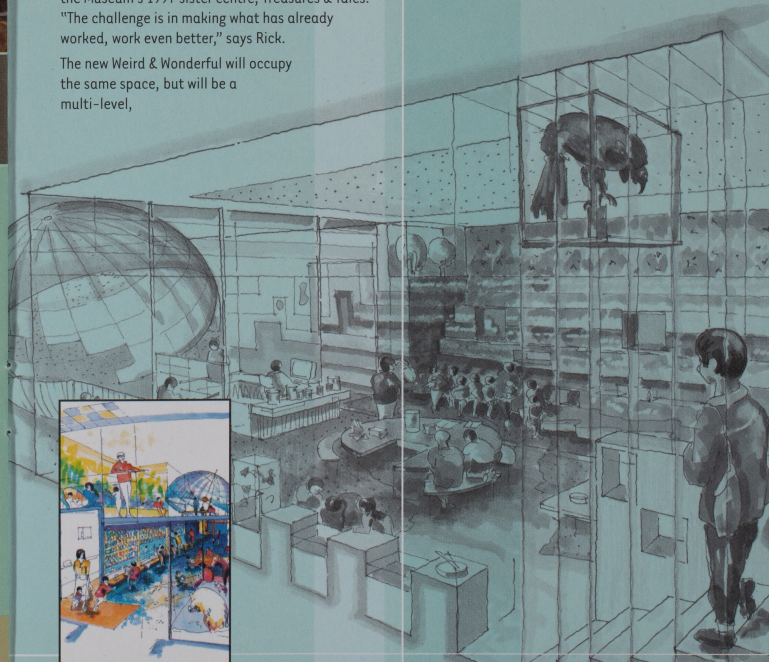
The new Weird & Wonderful will occupy the same space, but will be a multi-level,

multi-themed environment. The Centre will be divided into five areas: a 'subterranean' marvel complete with fossils, volcanoes and sandpits; a 'living layers' area defined by an ever-changing forest of columns with bio-diverse bugs, birds and forest life; an 'Auckland isthmus' section with a familiar beachside backdrop; a 'lab station' learning zone set beneath a giant astral dome, and a cosy 'South Pacific' area featuring neighbourhoods of life from warmer seas.

A central 'spine' throughout Weird & Wonderful will depict the water cycles we live by.

Maori story developer, Marama Mura-Lanning also brings a new Maori natural history dimension to the Centre.

Weird & Wonderful is due to open on 16 November. For more information on opening day events, check our website in October.



# Membership at Auckland Museum

## WOULD YOU LIKE TO BECOME ONE OF AUCKLAND MUSEUM'S FAMILY OF SUPPORTERS?

Membership allows you to share in the many events and activities underway at the Museum while receiving a number of special benefits.

The Museum offers four membership categories; the *Museum Circle*, whose members assist with fundraising initiatives and coordinate a range of premier events including an annual dinner; the *Inner Circle*, a newly formed under-35s sub-group of the Circle whose events are aimed at a younger audience; the *Museum Institute*, Auckland's branch of the Royal Society whose varied events programme includes curatorial seminars and field trips; and the *Dinomites* club, the Museum's activities club for kids.

Members receive a range of benefits including a complementary copy of Museum Quarterly, a 10% discount at The Museum Store and discounted admission to exhibitions.

For a membership brochure, contact the Museum's sales and marketing office on 306 7084 or for Museum Institute membership, contact Margaret Spencer on 306 7070 x883.

### Spotlight on the Inner Circle

The Museum's newest membership category, the Inner Circle, was launched in May with an evening of performance, music and multimedia.

Inner Circle member, Georgina Caughey says the new membership group has been established to cater for under-35s whose interest in the arts is combined with a desire to support New Zealand's oldest museum.

"The aim of the Inner Circle is to provide a range of arts events while supporting the Museum. Events in the pipeline include a ball, lectures and seminars and a sneak preview of upcoming exhibitions."

Membership of the Inner Circle is \$150 per year (\$50 subscription, \$100 donation). Members receive invitations to all Museum Circle and Inner Circle events, a free invitation to special exhibition openings, a discount at The Museum Store, membership of the Friends of the Applied Arts and a subscription to MQ.

To join the Inner Circle, contact Fe Chambers on 021 32 8311 or email [fiona\\_chambers@xtra.co.nz](mailto:fiona_chambers@xtra.co.nz).

# What's up on the hill

## SEPTEMBER

### Sunday 1 September Music in the Museum

Pacific Conchiness, world music performers, play traditional Pacific instruments in contemporary ways at 3pm.

### Monday 9 September Missing Teeth: Gaps in the Collection

Curator Louis Le Vaillant investigates gaps in the Museum's applied arts collection at this *Friends of the Applied Arts* event. 7.30pm, Museum Library Reading Room. \$15 for non-members.

### Sunday 15 September Living Treasures Day – Medieval Day at the Museum

A day of medieval mayhem including live performances, costumed characters, storytelling, music, talks and games.

### Wednesday 18 September Earth: Where did Pohutukawas come from?

The first in a four-part Wednesday lecture series *The Elements: Earth, Air, Water, Fire* organised by the Museum and Museum Institute in association with the University of Auckland. Biogeography lecturer Dr Shane Wright plots the history of our celebrated Christmas tree. 7.30pm, APEC Room. \$15 per lecture or \$45 for the series; concessions available.

### Wednesday 25 September Air: Our Universe from the Beginning of Time

Part two of *The Elements* looks at our Universe with Dr Grant Christie from the Stardome Observatory. 7.30pm, APEC Room.

## Sunday 29 September

### Time in Motion – Auckland: City of Sails

This NZ Film Archive screening takes a look back at Auckland's love affair with yachting. 3pm, APEC Room.

## OCTOBER

### Wednesday 2 October

#### Water: Aquaculture - Animal Designers from the Deep Blue Sea

Part three of *The Elements* with marine curator Dr Carol Diebel, looks at creatures who have evolved unusual survival and camouflage techniques. 7.30pm, APEC Room.

### Sunday 6 October Music in the Museum

The Auckland Mandolinata Orchestra perform music from Mediterranean and Baltic countries at 3pm.

### Wednesday 9 October

#### Fire: Fire from the Earth

This final *Elements* lecture looks at volcanoes with Associate Professor Ian E Smith. 7.30pm, APEC Room.

### Thursday 17 October

#### Charles Fleming Lecture: Science and Sustainability

Professor John L Craig addresses environmental sustainability. 7.30pm, APEC Room.

### Sunday 27 October

#### Living Treasures Day - Hillary

A day of events commemorating Sir Edmund Hillary's achievements and the Museum's 150th birthday.

## NOVEMBER

### Sunday 3 November Music in the Museum

Left Hand Down, eclectic world percussionists, perform a free-ranging set of improvised beats at 3pm.

### Saturday 16 and Sunday 17 November

#### Reclaimed Adults' Workshop

Make something beautiful out of rubbish with *Reclaimed* contributor, Eyv Saunders. Participants can make their own creations from jumble materials. For bookings phone 306 7040. This session restricted to adults, \$25 per person.

### Sunday 17 November Living Treasures Day – Ancient Egypt

The Museum brings to life the treasures of Ancient Egypt in a day of talks, workshops, live performances, and storytelling.

### Saturday 23 and Sunday 24 November

#### Reclaimed Kids' Workshop

Kids' workshop with *Reclaimed* contributor, Eyv Saunders. For bookings phone 306 7040. Suitable for ages 10 and up, \$15 per child (\$12 for Dinomites).

## DECEMBER

### Sunday 1 December Music in the Museum

Welsh tenor John Stanley performs pieces from opera, stage and screen. 3pm, APEC Room.

## School holiday programme – from 21 September to 5 October 2002

### HIGHLIGHTS

#### Talent Quest

If you can sing, dance, play instruments, tell jokes or have some other odd talent, we want to know about it! Great prizes! Ring 306 7040 to register. Show takes place on Thursday 26 September from 10.30am – 2.30pm.

#### Wetasaurus appearances

Catch our Dinomite president Wetasaurus, he's part Weta, part Dinosaur! Wetasaurus will be visiting the Discovery Centre at 11am on: Tues 24 Sep, Sat 28 Sep and Tues 1 Oct.

#### Storytelling fun!

Have fun with storyteller Jo Lees in *Treasures & Tales* on Wednesday 25 Sep and Wednesday 2 Oct at 1:30pm.

### WORKSHOPS

Bookings essential. Call 306 7040 from 14 September to book. \$6/\$5 for Dinomites. Workshops take place from 10am–12

noon or 1.30–3.30pm, and are for 7–12 year-olds unless otherwise stated.

### Monday 23rd September Kaleidoscopes

### Friday 27th September Shadow Puppets

### Monday 30th September Mosaic Magic

### Thursday 3 October Ancient Egypt

### Friday 4 October Merry-go-round mobiles

For 5-6 year-olds. 10-11am and 1-2pm

### INTERACTIVE SPOT TALKS

11am and 2pm on the following days:  
Monday 23 September  
Incredible stories from the

### Museum's past!

More than a Mummy exhibition, first floor

### Wednesday 2 October

*Stories from Victorian life*  
Auckland 1866 gallery, top floor

### Friday 4 October

*Toys from our past*  
Wild Child, ground floor

### 10-MINUTE ACTIVITIES

10am – 12 noon and 1.30pm – 3pm in the Discovery Centre, \$2 for materials/\$1 for Dinomites.

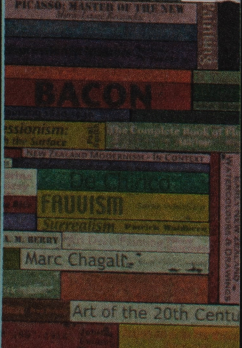
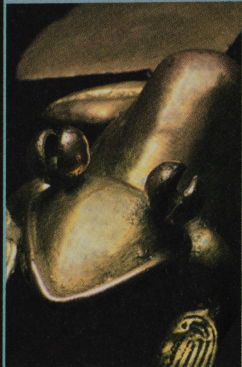
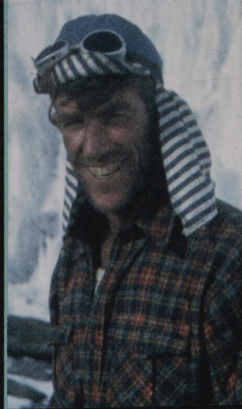
### Mondays and Fridays Birthday Crowns

Tuesdays and Saturdays  
Make a cup and ball game

Wednesdays  
Furry Cards

Thursdays and Sundays  
Badge making

# Exhibitions at a glance



## Special Exhibition

### **Sir Edmund Hillary: Everest and Beyond**

26 October – 28 February 2003

A celebration of the achievements of our greatest living New Zealander, Sir Edmund Hillary.

## Decorative Arts Gallery East

### **Reclaimed**

15 November – 21 January 2003

British designers make art out of rubbish in this quirky exploration of trash revitalised.

## Decorative Arts Gallery West

### **More than a Mummy: 150 Years of Collecting**

Until 31 January 2003

An exhibition celebrating Auckland Museum's history of collecting. Special guest appearances by some of the Museum's most unusual and loved objects.

## Pictorial Gallery

### **Prime Min**

11 October – 18 January 2003

An exhibition of the work of New Zealand Herald satirist and cartoonist Sir Gordon Minhinnick. Curated in association with the New Zealand Herald in the centenary of his birth.

## Scars on the Heart

### **Volunteers and Militia**

Until November 2002

This display, comprising uniforms, medals, memorabilia and photographs, focuses on the first fifty years of volunteers and militia in New Zealand.

## East West Gallery

### **Wallace Art Awards**

7 September – 2 October 2002

An exhibition of the annual Wallace Art Award finalists.