

Museum 2000

The last issue of Museum News (now MQ) for 1995.

And what a year it has been! Not spectacular out front, although it has certainly had several high points, but it has been a year in which several historic things have occurred:

- the new Auckland War Memorial Museum Bill has concluded an, at times, tortuous process of consultation and is finally before the House;
- the Museum has satisfied all the conditions precedent upon Government's funding of the Refurbishment Project, convinced Cabinet on the need for indexation, and received its first funding instalment;
- work is underway on several aspects of the refurbishment and the first permanent exhibition, *Scars on the Heart* is only weeks away from opening;
- key new staff have joined the institution to add their skills to the

New Look Museum

The changing face of Auckland Museum was revealed on the front steps at the end of October when staff modelled their new uniforms for the Governor General, Dame Catherine Tizard.

solid stock of those of existing staff to gear us up for the five year long Project;

- the company, Auckland Museum Enterprises Ltd., has been formed to govern the refurbishment works;
- Dame Catherine Tizard has announced her leadership of the Museum 2000 Circle and Sir David Attenborough has volunteered his services as Co-Patron. This group will spearhead the Museum's fundraising efforts.

1995 has been a year of getting our house in order, and a great deal of strategic planning. 1996 will be a year of delivery. Two new permanent exhibitions open, along with a New Zealand at War resource room and separate galleries for each of the Zero and Spitfire aircraft. A major international exhibition and three national blockbuster shows will be mounted. New public amenities and improved food and retail outlets will be opened. A new governance body will take over from the old Museum Council and Trust Board. New membership services will be offered, and an expanding membership will appear.

1995 hasn't been an easy year, but it has been a successful and important one. The things that it has made possible will start to become available next year, and we're sure you will like them.

Rodney Wilson, Director



Exhibitions



SCARS ON THE HEART

At dawn on February 3 the first new permanent display exhibition *Scars on the Heart* opens.

Part of the second floor, New Zealand at War level of the Museum, *Scars on the Heart* interprets New Zealand's emerging sense of national self and identity through times of conflict and war.

The visitor will be introduced to both Maori and British views of the New Zealand Wars in Northland and the Waikato. They will visit a travelling roadshow on the Anglo Boer War at a small town Town Hall, and they will dig into the hillside of Anzac Cove at Gallipoli, camp out under canvas in the Sinai and Palestine, visit a captured pillbox fitted out as military command in Northern France, and pick their way along the duckboards of a First World War Western Front trench. At the end, the dreadful cost of war, in suffering, loss, maiming and

destruction will bring home the exhibition's title, *Scars on the Heart*. Naturalistic environments, soundscapes, interactive multimedia, and a variety of new exhibition technologies will excite and stimulate. In November a second exhibition interpreting the Second World War, the Asian Wars and Peacekeeping operations will open, as will special new galleries to house the Spitfire and Zero aircraft, and a print and multimedia resource centre featuring New Zealand at War.

Maningrida; the Language of Weaving

Maningrida has long been recognised as a centre for some of the finest weaving in Australia. Located on the coast of Arnhem Land in the Northern Territory, the community of Maningrida has developed an enviable reputation for the quality and innovation of its fibre crafts - objects which range from baskets and bags through to fishing traps, mats and other ceremonial and decorative pieces.

This exhibition celebrates the individuality of the weavers, the subtle variation in weave, technique and experimentation of each artist. It also presents the artists, who are predominantly women, as scientists in the true sense as they constantly observe and experiment to enhance their craft.



Colonial History

In February the former Centennial Street will open as a revamped and presented Colonial History Gallery. The earlier buildings have been improved; one or two new structures added; lighting, sound, floor surfaces improved; and the collection reinstalled.

Centennial Street has been one of the Museum's popular displays. With a new lease of life, it will enchant many more visitors in the future.

Bakuba Style


Prepared by women and children, woven by men and decorated by women, the embellished raffia weavings of the Bakuba people of southern Zaire present a stunning visual display of the weaver's art, works the people call "songs of the spirit".

Extravagantly long skirt lengths, the famous knives of the Bakuba 'people of lightning', decorative boxes, and stunning masks are featured in this exhibition of treasures from the private collection of Mr Greg La Chapelle of Santa Fe, New Mexico.

Owners


This exhibition features a collection of owners. From Blockhouse Bay to Brooklyn Bridge they have been sought out and photographed, united by their finery. Each one of this disparate group owns a work by one of New Zealand's foremost contemporary jewellers, Warwick Freeman.

Owners is a collaboration between Warwick Freeman and renowned Auckland photographer, Patrick Reynolds. It comprises 25 black and white portraits of the owners and framed exhibits of the jewellery, accompanied by a full colour catalogue.

Owners is a nationwide touring show which opens on 2 December at Auckland Museum. 

Compaq gets "Weird and Wonderful"

The Auckland Museum *Weird and Wonderful* Children's Discovery Centre now has ten Compaq Presario PCs provided by Compaq in a joint sponsorship deal between Compaq Computer New Zealand and Microsoft New Zealand. Compaq and ComputerLand Auckland are also supplying technical and training support for the Centre.

"Compaq recognises the importance of the *Weird and Wonderful* Discovery Centre as the only natural history resource discovery centre catering for most of the North Island," said Compaq Computer New Zealand Marketing Director Tony Lambert. "The Centre is an exciting community resource and a focus for the more than 160,000 school children who use the Museum's school education centre each year. Compaq are delighted to be able to help enhance science and technology within the community, and to be joining forces with Microsoft as emerging leaders in home computer technology in New Zealand." 



M u s i n g s

New Home for Moa Bones

The Museum's large and important collection of Moa bones, mainly built up during research by former director, **Sir Gilbert Archey**, has now been completely rehoused. The bones had been stored for many decades on open shelves and become coated with dirt. In a two year project funded by the Lottery Grants Board, temporary assistant **Janet Brady** individually cleaned the bones and packed them into boxes. To identify the contents a small photo has been fixed on to each box.

New Additions to the Weta Family


Eggs laid by the two giant wetas on display in *Caltex Volcanoes & Giants* last summer are beginning to hatch. So far 10 healthy giant weta babies have emerged and are being cared for by **Rosemary Gilbert** and **Brian Lawton**. There will be more to come over the next few months since both females probably laid more than 300 eggs each over their adult lives. No booties please, but champagne, flowers and messages of congratulations can be sent to the Entomology Department.

Honour for Museum Shop

The Auckland Museum shop has a reputation for organising beautiful presentation gifts. The most recent recipients of two such gifts were **Her Majesty the Queen** and **Nelson Mandela** on their recent visit to New Zealand for CHOGM. Her Majesty was presented with a beautiful greenstone work by **Neil Brown** commissioned by Air New Zealand. President Mandela received a greenstone carving by **Neil Hanna** commissioned by Auckland City.

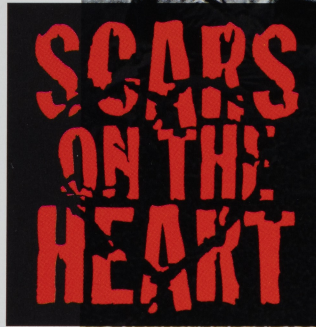
Behind the Scenes

For **Jeny Curnow**, as for others in the Museum Library, working to make Maori materials accessible is considered a vital task. A contract position in the Library as Maori Materials Specialist since 1993 has provided her with the opportunity to work in this important area. Prior to coming to the Museum, Jeny had completed a Master's degree with First Class Honours in Maori Studies at Auckland University with a thesis entitled *The Life and Work of Wiremu Maihi Te Rangikaheke*, and worked as a Research Assistant at the Archive of Maori and Pacific Music, University of Auckland. She has published several articles on Te Rangikaheke and written five essays on Maori subjects in the Dictionary of New Zealand Biography.

The manuscript collections of the Library are extremely rich and Jeny has found cataloguing them and making inventories very exciting. Describing the contents and making them widely known, particularly to iwi and hapu, she believes is essential if Maori are to become aware of the taonga in the Library available for their use. The publication of *Ngā Pou Ārahi*, the tribal inventory compiled by Jeny, will increase both the awareness and the accessibility of these priceless treasures. 

3 February

The stories of the New Zealand Wars, the Anglo Boer War and World War One reveal New Zealand's emerging sense of national self and identity through times of conflict and war. Naturalistic environments, sound, interactive multimedia are some of a variety of new display technologies that bring to life this first stage of Auckland Museum's Refurbishment Project. Admission: Adults \$5.00, Children \$3.00, Family \$10.00.



Save the date:

**Scars on the Heart
Members Preview**

Friday, 2 February 1996, 5 to 7 pm

February

Colonial History

In February the former Centennial Street will open as a revamped Colonial History Gallery. The earlier buildings have been improved, one or two new structures added, lighting, sound, floor surfaces improved, and the collection reinstalled. Centennial Street has been one of the Museum's popular displays, and with a new lease of life it will enchant many more visitors in the future.



25 November - 6 February

Maningrida:

The Language of Weaving

In a community in the remote Northern Territory a group of women maintain their ancient traditions, producing some of the finest weaving in Australia.

25 November - 6 February

Bakuba Style

The Bakuba people of Southern Zaire are renowned for their embellished raffia weaving. An exhibition of weaving, and other treasures, from the collection of Greg La Chapelle of Sante Fe.

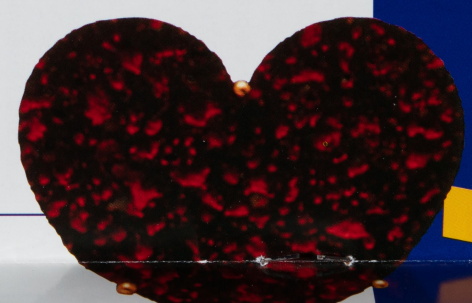
Admission: Adults \$3.00 Concessions \$1.00 gives entry to both exhibitions.

2 December - mid February

Owners

The owners of Warwick Freemans'

WHAT'S HAPPENING



2 December – mid February

Owners

The owners of Warwick Freemans' jewellery appear in photographs by Patrick Reynolds alongside the jewellery itself in an exciting collaboration by two of Auckland's foremost artists.

Weird & Wonderful Plants

13 December 1995 – 31 January 1996

See Cacti, smell herbs and watch flies disappear...

Take part in the following activities daily: 10.00 am – 12.00 noon
2.00 – 4.00 pm

Monday: Face painting – camouflage yourself! \$2.00

Tuesday: Put the finishing touches on your own plant game; 50¢

Wednesday: Badge making – design your own plant badge; \$2.00

Thursday: Make a moveable venus fly trap! 50¢

Friday: Face painting – camouflage yourself! \$2.00

Saturday: Badge making – design your own plant badge; \$2.00

Sunday: Design your own "plant" post-card to send to a friend; \$2.00

Enlarge... sticky seeds, hairy leaves, lichens and flying seeds, using our video microscope

Guest appearance by Santa
20, 21, 22 December

Make-it-bags: Bits and Bobs for you to build with – take yours home! \$3.00

On-going

Weird and Wonderful

Auckland Museum's permanent natural history discovery centre provides hands-on fun for children and adults of all ages.
Admission \$1.00

On-going

Caltex Volcanoes & Giants

A chance to learn more about, not only New Zealand's own dinosaurs, but also our fiery volcanic past and possible future!
Admission Adults \$5.00, Children \$3.00, Family \$15.00

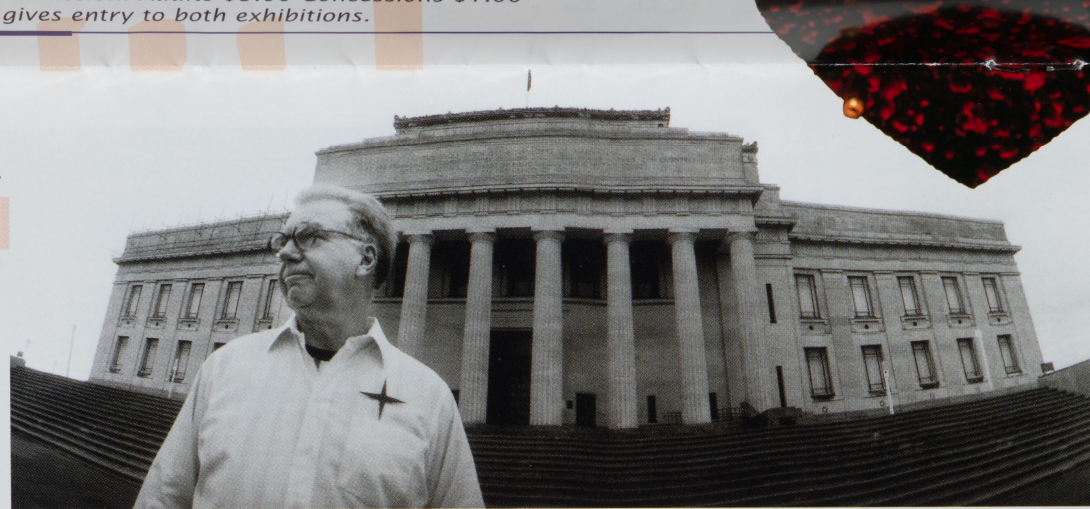
Up-coming

Ghenghis Khan

The Mongolian Empire ruled by this feared leader had a rich cultural and artistic heritage that stretched back at least 6,000 years. This international exhibition gives Museum visitors an unprecedented chance to peer over the shoulders of archaeologists and historians at the legacy of the Mongols and their Asian predecessors.

For information on Membership ring

Barbara Russell or Lisa Rae (09) 3090443 (ext. 714)



Christmas Concerts in the Museum

The following performances will take place in the Museum. All Members and friends are welcome to attend

Society of Recorder Players

Saturday 16 December at 1.00 pm
The Programme will include a selection of Christmas Carols

Oriana Consort

Saturday 23 December at 2.30 pm
A selection of Christmas Carols

Opening



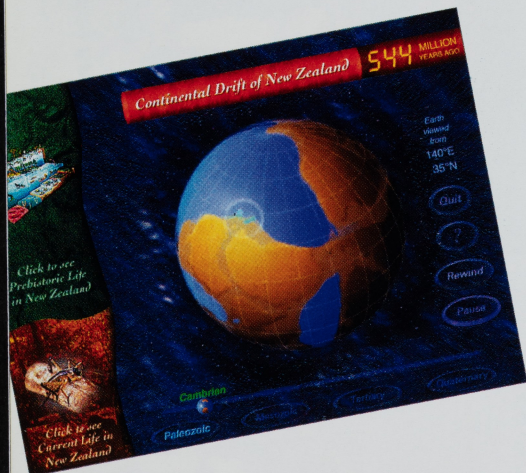
Auckland Museum
Te Papa Whakahiku

Infophone
09 377 3932

Special Offers

Shop Discount

Just in time for the holidays! All Members will now receive 10% off merchandise purchased in the Museum Shop or in special exhibition retail areas. Please be advised that you **must** show your Membership card to receive your discount.



Journey Through Time with Auckland Museum

For those of you with computer-minded children or grandchildren (or even for yourselves!) we have a special introductory offer on the newly released CD-ROM *New Zealand's Journey Through Time*. For the month of December only, Members can purchase this programme through the *Volcanoes & Giants Shop* at 15% off the suggested retail price of \$69.95.

New Zealand's Journey Through Time was first developed by Terabyte Interactive for the *Caltex Volcanoes and Giants* exhibition at the Auckland Museum. Suitable for both Macintosh and Windows, this programme allows the user to explore New Zealand's fascinating 600 million year "Journey Through Time" via three inter-related natural history stories: *Continental Drift*, *Prehistoric New Zealand Life* and *Current New Zealand Life*

To take advantage of this special offer hurry to the *Volcanoes & Giants Shop* and be sure to have your Membership card with you!

Members' Events

Friday 2 February 5:00 – 7:00pm

Scars on the Heart Members Preview

The following tour is being offered to all member organisation of the Australian Federation of Friends of Museums (AFFM). If you would like further information please contact Barbara Russell.

The Ages of Anatolia: with Special Anzac Day Gallipoli Tour

organised by Australians Studying Abroad in association with AFFM
7-28 April 1996

\$3440.00 Land Content Only

Are You Interested...

... in overseas tours sponsored by Auckland Museum? We have begun the initial planning for two overseas tours in late 1996 or early 1997. If there is sufficient interest we will finalise our plans and notify all Members of the particulars. These tours, led by prominent historians and Museum personnel will be designed to offer a behind the scenes look at museums and cultural institutions at the respective destinations. Please let us know if you would be interested. An expression of interest does not commit you to taking the tour(s).

Please return this form to: Barbara Russell, Membership Programme Manager, Auckland Museum, Private Bag 92018, Auckland.

Name

Address

Phone

I would be interested in the following:

- China: A Four City Tour
- Australian Museums: Sydney to Melbourne

Concerts in the Domain

It is time once again for the summer series of concerts in the Domain. On the following dates, from **5:00 to 7:00pm** the Museum will have a special hospitality area for members

Saturday 27th January

(Rain date Sunday 28th January)

Phillips Opera in the Park

Saturday 3rd February

(Rain date Sunday 4th February)

Fosters Symphony Under the Stars

Enter through the West door and you will be directed to a private area for Members. Join staff and other Members for free refreshments, rest your feet, use our restrooms, and get some relief from the heat and crowds.

Members Trip to Karekare

Leader: Ewen Cameron, Curator of Botany, Auckland Museum

This special trip for Members will explore the sand flats and study the dune vegetation which includes some of the most extensive herb fields in the Auckland area.

Date: 17 March

Cost: Members \$25.00;
Non-Members \$35.00

Transport: The bus will depart from the Administration entrance at the rear of the Museum at 9.30am returning to Auckland at approximately 5.00pm.

Lunch: Bring your own.

Clothing: Bring sensible footwear, and warm clothing.

To reserve a place for this field trip ring **Barbara Russell** on **09 309 0443**.

New Membership Programme Manager Appointed

In early October

Barbara Russell

joined the staff as our new Membership Programme Manager.

Barbara, a native of the United States, holds a BA in Art History from the University of North Carolina, Chapel Hill and an MS in Arts Administration from Drexel University in Philadelphia, Pennsylvania. Prior to moving to New Zealand she was Public Art Co-ordinator for the City of Philadelphia. Barbara brings a wide range of experience in areas such as public relations, marketing, humanities programming, and fund raising.



She was also instrumental in introducing a membership programme for Atwater Kent Museum in Philadelphia. Barbara is excited to have the opportunity of helping expand the membership programme to offer a wide range of benefits and interesting events to the Auckland Institute and Museum Members.

She is here to serve you. If any of you have questions, comments or suggestions regarding the membership programme please contact Barbara on 309 0443, ext.714, or Fax 379 9956.

Also joining the Museum staff is

Lisa Rae, as Development Co-ordinator. Lisa will be responsible for managing our new donor and membership database. Please direct any changes of address to Lisa.

Annual General Meeting

The AGM of the Institute and Museum was held on Monday 20 November 1995 in the Museum School Room. Full minutes of the meeting are available upon request from the membership office. You may be interested to note the following decisions passed at the meeting.

New Officers and Representatives Selected

The President announced that the Council has elected the following new officers:

Professor AR Bellamy	<i>President</i>
Lorraine Wilson	<i>Vice President</i>
Dr HV Coop	<i>Past President</i>

The following Members were elected as representatives to the Council:

Gordon Ell
Assoc. Professor J A Grant-Mackie
Bruce W Hayward
Jennifer Lamm
Janet Riddick
Sheila M Weight

Thank you to all the nominees who allowed their names to go forward in the election.

New Subscription Levels

Barbara Russell presented new levels of membership and the meeting voted to approve new subscription rates as follows:

Individual	\$45
Superannuitant/Student	\$36
Family	\$80

– Includes regular membership for two adults at the same address plus Compaq/Microsoft Dinomites Club memberships for up to three children (\$10 each additional child)

Library Borrower	\$175
-------------------------	--------------

– Please note that all current members as at 31 December 1995 will retain their Library borrowing rights as long as they remain continuous members.

Life	\$1500
-------------	---------------

These new subscription rates will go into effect on 1 January 1995. If you have any questions regarding these changes please contact Barbara Russell

Institute Rule Changes

A Special General Meeting of the Institute was convened at the Museum on 28 August, to discuss proposed rule changes. The adopted rules are summarised below:

Rule 9 (a) Immediate benefits from payment of subscriptions for individuals

Rule 9 (b) Immediate benefits from payment of subscriptions for any body or organisation

Rule 9 (c) Immediate benefits from payment of subscriptions for any Maori tribal group

Rule 9 (d) Categories of membership shall be Adult, Family, Junior, Volunteer, Honorary Life Member, Life Member, and Corporate.

Note: The proposal that the Life Member category be cancelled was not passed

Rule 10 (a) Subscription rates shall be determined at the Annual General Meeting of the Institute each year. Council shall recommend the subscription level, with a nominated date of commencement.

Rule 10 (b) The life subscription fund shall be invested and the interest applied to the uses of the Institute and Museum.

Note: The proposal to utilise the principal as a one-off loan was not passed.

Rule 10 (c) Annual subscriptions can be initiated at any time throughout the year and are payable on the annual anniversary of joining.

Rule 10 (d) Membership will lapse on a Member's resignation or if subscriptions are not paid within six months of falling due.

Rule 14 Membership benefits will be published annually. Museum Library borrowing rights will apply only to Members as at 31 December 1995, Life Members and other such Members as may contribute by subscription to the upkeep of the Library. If you would like an updated copy of the rules or the minutes from the meeting please notify Barbara Russell or Lisa Rae.



Professor Timoti Karetu speaking at the launch of *Ngā Pou Ārahi*

Library News

For the Museum Library 1995 has been a very significant year with several special highlights. The first of these took place on 8 May when the exhibition *Tohu* was launched in a moving ceremony in the Maori Gallery of our Museum, Te Papa Whakahiku. Eight Auckland libraries joined to produce this series of displays showing the wonderful taonga in their collections and outlining their services to readers. *Tohu* was developed as part of our celebration of Te Tau o Te Reo Maori and it was the role of Libraries in promoting Maori Language that was the subject of the guest speaker Professor Timoti Karetu QSO, the Maori Language Commissioner. The

in the Library itself. The conditions outside did nothing to dampen Councillor Lorraine Wilson's impassioned introduction or Dame Miriam Dell's launch of *Womanscripts*. This guide to manuscripts in the Museum Library which relate to women was the result of two years' work by Sue Loughlin and Carolyn Morris who were contracted by the Suffrage Centennial Committee to produce a book that would make our manuscripts more accessible.

The beginning of December saw yet another significant event for the Library with the launch of *Ngā Pou Ārahi*. Subtitled a tribal inventory of manuscripts relating to Maori treasures, language, genealogy, songs, history, customs and proverbs, this important book has been compiled by Jeny Curnow, the Library's Maori

occasion of the launch was the one time that the displays of *Tohu* would be together; following the opening they have rotated one a month around the participating libraries.

On a wet and windy June night the second of the Library's major achievements of the year was celebrated

Materials Specialist. The book features 15 tribal sections with maps showing the tribal area, and the iwi and hapu concerned, preceding each section. The manuscripts are nationwide and date from 1827 to the present day. 298 collections are described, including Aperahama Taonui's history of Ngapuhi, some of Te Kooti's letters and waiata, Harry Dansey's papers, a significant series of essays on Te Rauparaha, as well as the papers of early missionaries.

Ngā Pou Ārahi will be available in the Shop and through the Publications section from 5 December at \$30 (GST inclusive) for Members.

For Your Information

Auckland Institute and Museum

Private Bag 92018
Auckland
New Zealand

Telephone 09 309 0443
Infophone 09 3773932
Facsimile 09 379 9956

Director Dr. T L Rodney Wilson

Hours 10am to 5 pm daily

Open every day except Good Friday and Christmas Day.

Admission is free, Charge for Special exhibitions.

Donations welcome.

Free guided tours are available for groups on most days.

For information on Membership ring Barbara Russell or Lisa Rae (ext. 714)

For information on exhibitions ring the Infophone.

For information on public programmes or events for children ring **Weird & Wonderful** (ext.708).

Closures

The Museum Library will be closed between Monday 4 December 1995 and Saturday 16 December 1995 inclusive. It will reopen at 1pm Monday 18 December 1995. During this time the Library staff will undertake collection management tasks which have not been possible during opening hours. We apologise if this closure causes an inconvenience to our Members and other library users, but it is essential for the efficient running and maintenance of the Library's collections. If you wish to return Library books for this period there will be a 'book returns' bin on the ground floor of the Administration area near Reception.

Library hours: December 1995 – January 1996

Monday 4 December – Saturday 16 December	Closed
Monday 18 December – Thursday 21 December	Open
Friday 22 December – Tuesday 2 January	Closed
Wednesday 3 January	Re-open

