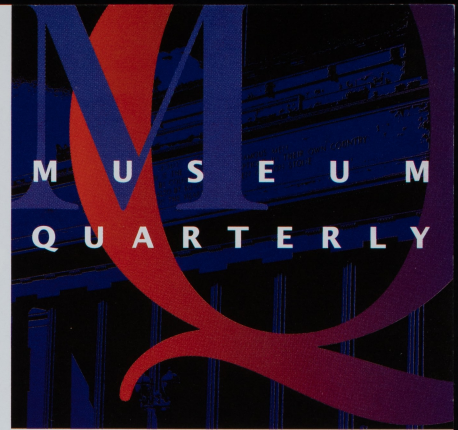


Greater self-sufficiency in the future



The Board of Trustees recently announced the need to make some staffing and organisational management changes at Auckland Museum.

These changes are necessary to enable the Museum to maintain its core functions and develop its revenue earning capabilities while ensuring that the Museum works within its current income.

The large majority of the Museum's funding is fixed and is in the form of a levy paid by the local Councils. Under the Auckland Museum Act introduced last year, the Museum is required to become more self-sufficient. If the Museum is to be in a position to improve its income in the future, it must lower its operating costs and increase its ability to earn more revenue from its programmes and other fund raising efforts.

It is clear that if the Museum continues its present range of activities, its outgoings, or costs, will exceed the present income.

Consequently, the Board reached the unanimous conclusion that some fundamental changes to the organisational structure and operations of the Museum were required.

The Museum has been restructured into two Divisions - Public Programmes and Professional Services. The many current small departments, about twenty in all, have been combined into these two larger organisational units. This will achieve greater administrative efficiency and enable the Museum to apply resources where they are most needed.

In addition, the record function and building maintenance has been contracted out and exhibition design services will be purchased externally.

In respect of the Library, the technical services function has been incorporated into the Museum's general collections support services.

The Marine Department will now be incorporated into the Natural History Unit within the Professional Services Division. This decision has been reached

with difficulty. The problem is that the Museum can no longer afford to support all its departments. It has to focus on its major core activities and the research directly associated with its most important collections.

All of the changes have been the subject of considerable deliberation because they involve the loss of jobs.

The Board and management has not taken this course without a wide ranging review of both the Museum's activities and its finances. This review was conducted over a considerable period of time and advice was sought from two independent panels of distinguished scholars who reviewed major aspects of the Museum's scholarly activities and provided extensive written reports.

These changes would not have been proposed but for the very real necessity to ensure that the principal services of the Museum are protected and the Board's immediate policies of delivering excellent front-of-house service and appropriate programmes to its ratepayer funders are achieved, while securing financial stability and opportunities for greater self-sufficiency in the future.

TL Rodney Wilson
Director

Exhibitions



Until 12 October

Sponsored by **SONY**

What's miraculous about spider's web? said Mrs Arable.

Ever try to spin one? asked Mr Dorian.

EB White, Charlotte's Web.

Guest curator Simon Pollard introduces visitors - both youngsters and adults - to the spider lifestyle in this fun and informative exhibition. Central to the display are twelve live tarantulas especially imported from the San Francisco Zoo, which are joined by our own local black Avondale spiders of 'Arachnophobia' fame and the tarantulas' Australian and South East Asian cousins the tunnelwebs as well as the incredible jumping spiders.

Radiating from a central website, themed displays reveal a wealth of information about the spider in all its diversity. Also included are fifty large colour photographs taken by Simon Pollard, who is world-renowned for his natural history

photography, along with the latest laser disc technology from the Smithsonian Institution providing up-to-the-minute commentary on the fascinating subjects of venom, web building, courting and mating.

Admission: \$5 adults, \$3 concessions, \$12 Family Pass



Spiders Events

New Zealand Geographic Spiders Lecture Series

\$5 (Members \$4)

- entry by East Door

Wednesdays at 7.30pm; Venue:

Education Centre

20 August

Dr Robert Jackson, Zoologist, University of Canterbury, presents a lecture entitled *What is that Spider Thinking?*

27 August

Mr Neville Blampied, Senior Lecturer in Psychology, University of Canterbury, presents a lecture entitled *Arachnophobia*.

Exhibition Talks

Sundays at 2pm. No charge, other than exhibition entry.

27 July

John Early, Curator of Entomology, Auckland Museum: *Katipo and other venomous spiders*

3 August

Grace Hall, Arachnologist, Landcare Research: *Avondale Spiders, their lifestyles and habits*

10 August

Peter Patterson, Teacher: *Spiders in Mythology*

7 September

John Early, Curator of Entomology, Auckland Museum: *Spider Enemies*

21 September

Peter Patterson, Teacher: *Spiders in Mythology*

5 October

Brian Lawton, Auckland Museum Live Animals Facilitator: *Tarantulas: lifestyles of the big and hairy*



Museum attendance hits 1 million - a first ever

An unsuspecting "visitor from Torbay" got more than she bargained for on a recent visit to the museum to see the Fletcher Challenge ceramics exhibition. Joyce Williams was presented with a gift from the Museum Store and a year's complimentary membership when she walked into the Foyer. This was to celebrate the museum having had over a million visitors for the 1996/1997 financial year, breaking all previous attendance records for the museum.

910,787 people visited the previous year, and 998,000 in 1994/1995 - the year of the highly popular 'Volcanoes and Giants' exhibition.

Several high-profiled shows this last year have helped push the numbers up over the million mark. Teramedia's 'World of Whales' attracted over 70,000 visitors and almost 50,000 saw Ghengis Khan. 50,000 went through the 'Fisher Price Toy Show' and just over 24,000 visited 'Robin Morrison: Photographer', making it the most successful exhibition ever for a solo New Zealand artist.

'Weird & Wonderful' continues to be popular, attracting 180,000 over the year, and 60,000 children from the Auckland region have participated in the 'Education for Schools' programme.

"We are thrilled with these results, as they secure the museum's position as the most visited museum or gallery in the southern hemisphere", said director Dr Rodney Wilson.

"It is particularly gratifying as it has not been an easy year for our visitors or staff. Delivering such an ambitious refurbishment programme whilst keeping the doors open has not been without its frustrations", he said.

In Brief...

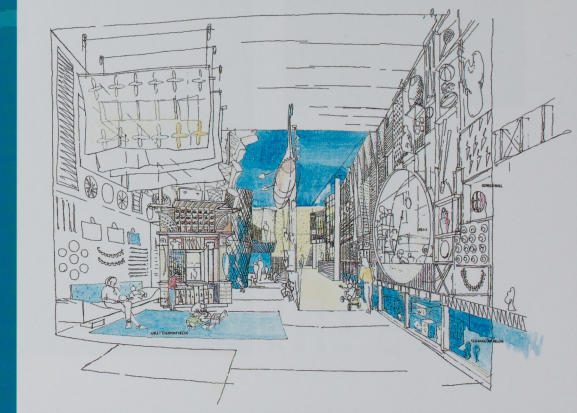
The Refurbishment Project - An Update

A second children's discovery centre for the museum

A second children's discovery centre will open later this year, and it will be as dynamic as 'Weird & Wonderful'. The centre will focus on human history collections and the richness of human creativity reflected in objects used by different cultures in everyday life. Architect Rick Pearson has completed a creative design, and construction is under way.

Fans, hats, shoes, clothing, tools, shields, baskets, masks, jewellery, puppets, costume, bowls and textiles will all find a place in this gallery, and many more objects are needed for 'hands-on' purposes. If you have anything gathered over the years, or through your travels, which you would like to contribute, please call Katrina Stamp on 309 0443 ext. 678.

Sketch of entry into Treasures & Tales



New Applied Arts galleries

The Applied Arts Department has been relocating its collection and preparing a series of four new displays for the Decorative Arts areas which open in early November. Two new galleries (above the Museum Store and cafe spaces) have been designed and will open at this time. A regular programme will reveal the richness and strength of our historical and contemporary collections.

The inaugural exhibitions include a selection of Korean material in the splendid loan collection from the National Museum of Korea, and works by Auckland-based artist John Edgar in a touring exhibition called 'Lie of the Land.'

Alongside these galleries, two long-term displays will show the interests of the philanthropic Victorian collector James Tannock MacKelvie and a selection of Japanese material.

COMPAQ presents A Day of Discovery

Sunday, 14 September, 10am - 4pm

It took conservator Annette McKone 140 hours to prepare the Samurai armour for display in the Armoury - just one of 2000 objects included in the new war exhibition.

Like the making of a movie or putting together an opera, the planning and development of major exhibitions like 'Scars on the Heart' can only be achieved with the support of a talented, professional and committed team of people - and a \$4.2m budget.

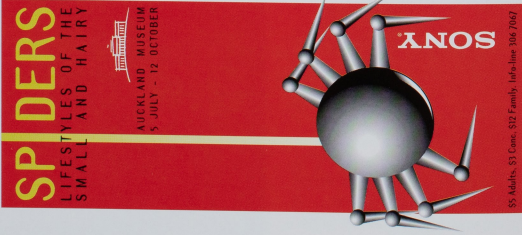
This year we celebrate the milestones of the Refurbishment Project to date and give you a glimpse of what's in store for the Natural History journey which opens at the end of next year.

Join the Compaq discovery trail, be in to win a Compaq Presario computer, and let the museum team share their world with you.

What's Happening



InfoLine
09 306 7067



ON-GOING

Whariki: The Traditional Mats of Biddy Konui

An exhibition of traditional raranga showing whariki sleeping mats and kete whakairo, patterned baskets by master weaver Biddy Konui and her students. Free entry.

Scars on The Heart

A powerful and moving account of New Zealand at war from the mid-19th century to the present day. This permanent display examines the impact of war through the eyes of those involved by way of photographs, letters, diaries and equipment of war from the museum's outstanding war collection. Free entry.

WEIRD & WONDERFUL

27 September - 12 October

Daily activities run, 10.00am-12 noon & 2.00pm-4.00pm, \$2 (\$1)
Mammal Mania at Weird & Wonderful! What's special about mammals? Learn about NZ's whales and bats... and meet some living rats.

Spiders! Lifestyles of the Small & Hairy

Until 12 October
Sponsored by SONY

This fun and informative exhibition brings to life the 'spider' in all its diversity. Twelve live tarantulas take up centre stage along side New Zealand's own black Avondale spiders, the Australian and South East Asian tunnelwebs and the incredible jumping spiders. Funky titles, models, cartoons and humour are used to tell the spider success story. Admission: \$5 adults, \$3 concessions, \$12 Family Pass

New Zealand Geographic Lecture Series

Wednesdays at 7.30pm,

\$5 (Members \$3); Venue: Education Centre, entry by East Door.

20 August – Dr Robert Jackson, Zoologist, University of Canterbury, presents *What is that Spider Thinking?*

27 August – Mr Neville Blampied, Senior Lecturer in Psychology, University of Canterbury, presents *Arachnophobia*.

Spiders! Exhibition Talks

Sundays at 2pm.

No charge, other than exhibition entry.

27 July, 3 August, 10 August, 7 September, 21 September & 5 October

Scars on the Heart Lectures

Tuesdays at 7.30pm.

Venue: Education Centre, entry by East Door. \$5 non-members; \$4 members and students.

2 September, 10 September, 30 September & 14 October

COMPAQ presents A Day of Discovery

Sunday, 14 September, 10am – 4pm, Free Entry.

Join the Compaq discovery trail, be in to win a Compaq Presario computer, and let the museum team share their world with you.



Spiderman abseiling down into the Foyer to the sheer delight of a hundred youngsters from Orakei Primary. The kids were treated to a sneak preview of *Spiders! Lifestyles of the Small and Hairy* the day before the show opened.

Armoury resources continue to grow with further RSA support

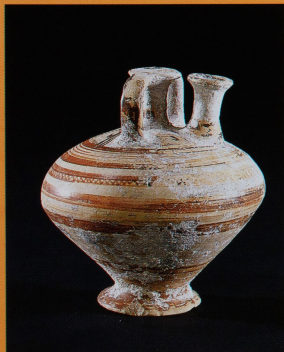
Janice Chong (Library Manager) was invited to address delegates at the recent RSA Auckland Regional Conference. She spoke about the Armoury, the services it currently provides and its vision for the future. The response was extremely supportive, and many offers of assistance to purchase resources were received. Already Swanson and Papatoetoe Branches have made generous donations towards the purchase of a digital scanner, which will allow photographs to be added to records on the 'Cenotaph' database, and Papakura Branch has indicated its commitment to purchase for us the New Zealand section of the

Commonwealth War Graves' Commission database. Cecilia Gullery continues to build up support among RSA members who provide her volunteers, and visiting school groups, particularly secondary, have provided very positive and encouraging feedback about the value of the Armoury resources for school projects. She is currently preparing a bibliography/pathfinder about the Vietnam War, using Armoury and Library resources, for distribution to secondary school history teachers, and this will be the first of a series of Guides to Armoury information which will be produced to promote our multi-format collections.

Freeze Drier

Natural History departments are grateful to the NZ Lotteries Grants Board whose assistance has let the museum purchase a freeze drier. The machine has now arrived from the UK, and is housed in the Entomology

Dpt. where Rosemary Gilbert wasted no time in putting it through its paces. It will receive heavy use as we prepare for the redevelopment of the Natural History galleries which open late next year.



Recent Acquisition

Recently purchased by the Archaeology Department is a Mycenaean stirrup vase, used for holding olive oil. The Mycenaean civilisation extended over much of the southern Aegean Sea in the years 1400-1100 B.C. It was the most important precursor of ancient Greek civilisation, which in turn gave so much to Europe and the western world. The pot dates from about 1300 C.E.

The ancient Mycenaean stirrup vase will enable future museum displays to tell something of the story of this important ancient culture. Height 143 mm.

Children

Advance Notice

The 'Weird & Wonderful' Children's Discovery Centre will be closed for refurbishment

13th - 26th October 1997

We apologise for any inconvenience this may cause

SCHOOL HOLIDAYS

27 September -12 October
Daily activities run: 10.00am-12 noon & 2.00pm-4.00pm (Each activity takes about 10 minutes) \$2 (\$1 Dinomites)

Monday

Wera Whakairo
Haere mai, carve whales from soap.

Tuesday

Moving Mammals: Mummy mammals don't lay eggs, they have miniature mammals growing inside them. Make a spin thing to see this.

Wednesday

Mammal Madness
Create a crazy creature card.

Thursday

Badge Making
You guessed right...Colour in one of our mighty mammal designs or make your own.

Friday

Mammal Madness
Create a crazy creature card.

Saturday

Mammal Makeover
We'll paint a rat, bat or cat on your face! (\$1; 50c Dinomites)

Sunday

Badge Making.

Parents:

Children must be accompanied by an adult in *Weird & Wonderful*.

The response from members was pleasing when over 150 took the opportunity to attend a private viewing of both the *Bendon Next to Nothing* and the *Fletcher Challenge Ceramics Award* exhibitions on a Sunday evening soon after they opened in May. Thanks to all those who then went on to tell friends and neighbours about the exhibitions, helping us to get the news to the public that interesting things happen at the Museum.

Members and their guests also enjoyed the Fashionable Day Out trip, taking in guided tours of both *Next to Nothing* and the Art Gallery's *Couture to Chaos* exhibition. Sadly, bad weather once again curtailed the field trip to the Leigh Marine Reserve. When a suitable date can be chosen, we hope that third time just might be lucky.

In early August the Zero and Spitfire conservation projects will be completed. Members will have a chance to have a closer look at these aircraft on a No-touch, No-sit basis, with the conservators explaining the process. There will be one weekday and one weekend visit available with strictly limited numbers. Phone 306 7044 for details and to book.

Newer members may not know of the wealth of experience available to us in our **Volunteer Guides**. Seen around the Museum helping casual visitors and with pre-arranged groups, these highly knowledgeable people can enhance the Museum experience for us all. To have a last look through some of the older Galleries before they close for refurbishment, guided tours for Members have been arranged in August:

Thursday August 14, 10am

Sheila Gray will guide us through the Asian Ceramics.



Korean ceramics on loan from the National Museum of Korea

Tuesday, August 12, 10am

Margaret Darke tells interesting tales about the collection in the Furniture Hall.



Combination writing and toilet cabinet, English c 1775-80

In October, the Museum's fine Maori and Pacific collection will be highlighted:

Thursday, October 9, 10am

Suzanne Boyes takes us through the Maori Court (optional attendance at the 11am Pounamu Maori Performance Group, \$7 & (\$5)



Detail of the Kaitaia carving which was found buried in Lake Tangonge near Kaitaia in 1920. The carving is believed to have been made about 1300 A.D.

Monday, October 13, 2pm

John Hammond will start in the Canoe Gallery and migrate to other parts of the Pacific collection.

All tours will have limited numbers. Please phone 306 7044 to book a place.

An exclusive preview of the September auction of **Peter Webb Galleries'** jewellery, decorative arts and fine arts will be held for members on Thursday, 18 September at 6pm. Strictly Members Only; for this evening Peter Webb's staff will be on hand to answer questions. New members may join on the night. RSVP by 12 September to 306 7044. **Cover charge \$10**

For any enquiries about the Membership Programme, contact Noela Gibbons on 306 7044.

Museum OPEN DAY on Sunday, 14 September

For this day, members will be treated to free admission to Spiders! Lifestyles of the Small & Hairy. This exhibition has a wide range of effects on its public; take this opportunity to view it for the first or umpteenth time.

Geology Trips

For members who find Auckland's unique geological features fascinating, the Centre for Continuing Education at the University of Auckland is offering **three different day trips and one course** in Semester 2 which will be of interest.

Les Kermode will lead a day trip to **The Ubiquitous Rangitoto** on Sunday, 17 August, (\$42 plus ferry), be on the bus which takes participants around Auckland's **Vanishing Volcanoes** on Saturday 13 September (\$68 includes bus), and accompany a group which will meet just south of Muriwai to explore the rocky coastal outcrops **From Neptune's Cauldron** on the morning of Saturday, 11 October (\$20).

Three illustrated Saturday morning lectures and a full-day Jurassic fossil field trip will be included in Mike Eagle's course, **Time Tunnel Travellers**, which runs for the four Saturdays commencing 30 August (\$78)

For booking or other information about any of these courses, phone 373 7599 ext 7831 / 7832



Scars on the Heart

Tuesdays at 7.30pm.

Venue: Education Centre, entry by East Door. \$5 non-members; \$4 members and students.

2 September

Voice Over – Miranda Harcourt talks about her new short film of her father Peter Harcourt's war experience

16 September

– Dr Judith Binney

Te Kooti Arikirangi Te Turuki and the Retention of Maori Autonomy


30 September

– Dr Brian McDonnell

War Stories Hollywood Told Our Mothers

14 October

– Bernard Morrison

Research carried out on the Maori Casualties in the First and Second World Wars 

Obituary

Eric D. Pritchard

With sadness we record the death of Eric Pritchard in his 94th year on 17 May 1997. Eric, a school teacher, had a long association with the museum. He frequently accompanied former staff members on field excursions, and they encouraged him to develop his lifelong interest in natural history. Insects, particularly beetles, were his speciality. He donated his collection of about 6000 beetles with accompanying field notes to the museum in 1984. We extend our sympathy to his wife Kath (Kay).

Sunday Concerts

With the closing of the Furniture Gallery, the concert given by students from the University School of Music on Sunday 3 August will be the last in a series which has been running for eight years. Out thanks for many hours of listening pleasure.

For Your Information

Auckland War Memorial Museum

Private Bag 92018
Auckland
New Zealand

Telephone 09 309 0443
InfoLine 09 306 7067
Facsimile 09 379 9956

Director Dr T L Rodney Wilson

Hours 10 am to 5 pm daily

Open every day except Good Friday and Christmas Day.

Admission is free.
Charges for Special exhibitions may apply.

Donations welcome.

Free guided tours are available for groups on most days.

For information on Membership ring 306 7044

For information on exhibitions, public programmes or events ring the InfoLine: 09 306 7067

Reminder - Library Membership

All members who joined before 1 January 1996, and who remain continuous members, retain their Library borrowing rights with no

extra fee. New or lapsed members incur an annual subscription of \$175 additional to their membership.

