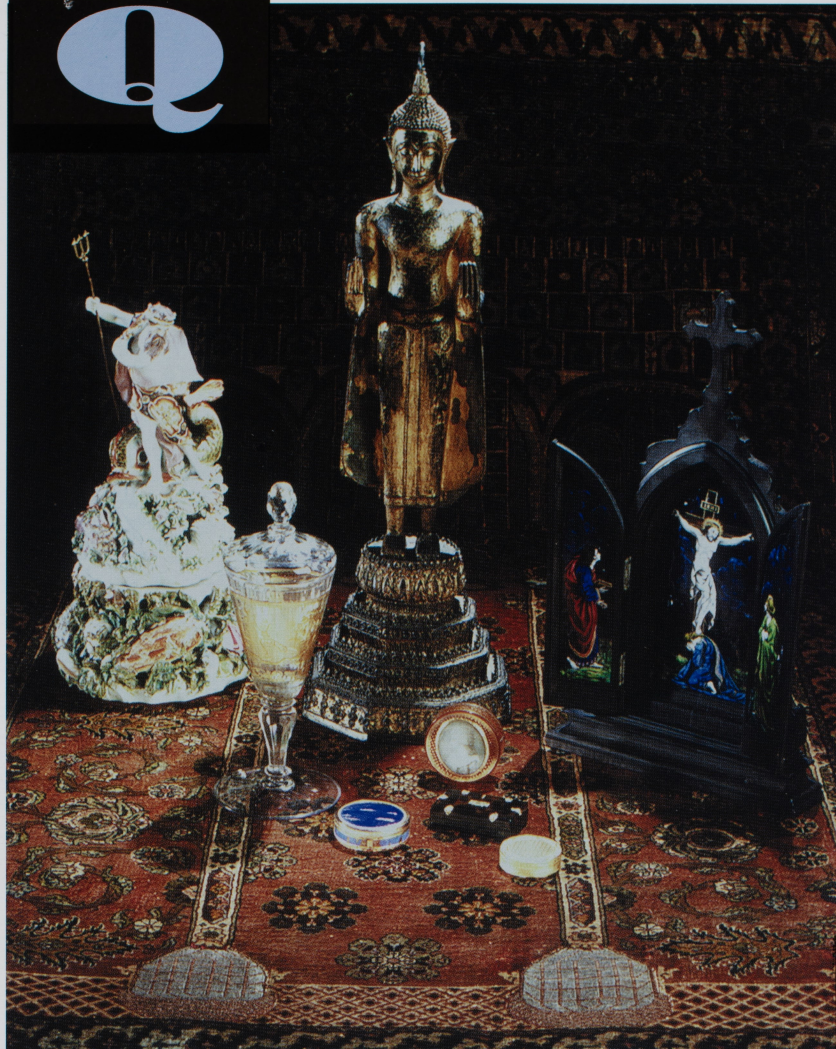


M

Q



MUSEUM

QUARTERLY

May 1998 issue 74

AUCKLAND INSTITUTE
AND MUSEUM LIBRARY

EPHEMERA COLLECTIONS

am 93 (27)

Mackelvie Gallery

Since the death of its founder, James Tannock Mackelvie in 1885, the Mackelvie Trust has been a substantial benefactor of both the Auckland Museum and the City Library, and was a founding donor to the Auckland Art Gallery.

With the opening of the new Mackelvie Gallery on the First Floor, the public will, for the first time, have the opportunity to contemplate the scope of the decorative arts collection exhibited in an order in which James Mackelvie himself

catalogued it before his 1885 donation to the city of Auckland.

James Mackelvie (1824 - 1885) arrived in Auckland in 1865 and during that time worked as a merchant, becoming involved in civic affairs. Amongst other things he helped to found the Acclimatisation Society, encouraging it to form a botanical garden in the Domain. In 1867 he was one of the founders of the New Zealand Philosophical Society which changed its name to the Auckland Institute. This

became the governing body of the Museum and Mackelvie served as one of the original seven councillors.

After leaving New Zealand, Mackelvie settled back in London, enjoying the leisured existence he had planned. Travelling sometimes to Paris and at least once to Rome, frequenting galleries, exhibitions and art auctions, Mackelvie gradually acquired an extraordinary diverse collection of paintings, sculptures, bronzes, ivories, jades, enamels, porcelain,

clocks and watches, coins and medals, arms and armour, books, mosaics, bonbonnières, rock crystal and glass.

From the beginning, he intended that these purchases would one day form a teaching collection in Auckland. The opening of this new, permanent gallery makes a significant selection of the Mackelvie bequest more accessible to the public, displayed in a manner in which he originally perceived it.

News
from the
departments

Year in Profile

The companion document to the 96/97 Auckland War Memorial Museum Annual Report has been published. It lists details of donors and benefactors, the paid and unpaid staff in each of the museum's divisions and their publications.

Copies are available on request.

Mammal bones a boost to reference collection

The important osteological collection in the Land Vertebrates department was lacking certain mammals introduced to New Zealand, so the Curator sent a circular letter to the Department of Conservation regional offices seeking help to fill the gaps. Staff of the West Coast Conservancy, Hokitika, engaged in culling operations, responded by setting various corpses in the bush to rot and then recovering the bones. They include our first bones of Red and Fallow Deer, Thar and Chamois. Another conservancy supplied seal bones.

All have now been cleaned by the Land Vertebrates technician and added to the reference collection where they will be used in connection with public enquiries (bones brought in for identification), and for research in zoology and archaeology.

Natural History Resource Centre.

The Natural History Resource Centre, due to open with the natural history galleries at the end of 1998, will become part of an existing network of resource and information centres which includes the Museum Library and the Armoury. The Armoury, located in the front-of-house, adjacent to the Scars on the Heart exhibition, has shown that the provision of specialised subject information in a multi-media, interactive environment works extremely well and is enthusiastically received by visitors. The Natural History Resource Centre is being

developed along the same conceptual lines. Like the Armoury, it will prove popular with senior secondary school students who can be introduced to the Centre's resources by staff who are knowledgeable about aspects of New Zealand's natural history and who can assist with information relevant to the current curriculum. Visitors will also benefit from resources which can enhance their experience and understanding of the natural history galleries.



Items from the library Ephemera Collection.

Things Ephemeral

During the Second World War, the French writer, philosopher and aviator, Antoine de St-Expéry, went missing on a routine flight. Part of his legacy is the story of the Little Prince, who, after questioning the Geographer, learns that things ephemeral are, sadly, "in danger of early disappearance."

The Library's ephemera collection is very definitely not in danger of early disappearance. On the contrary, these disposable bits and

pieces - brochures, programmes and timetables, tickets and labels, flyers, sales catalogues, postcards and greeting cards, leaflets and handbills - are retained as one of the important primary resource collections, for the pictures they draw and the stories they tell about the society that produced them, used them and discarded them. So when you have a spring clean and a sort out, think of your Museum Library. We would love to have a look at what you have hoarded for all those years!!!

Facing North: Humphrey Ikin Furniture Designer



Humphrey Ikin
Serving Table

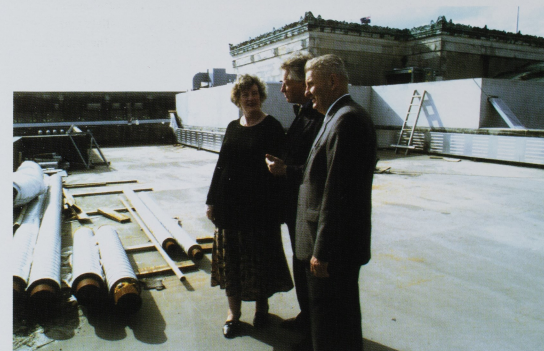
The current exhibition in the First Floor Decorative Arts East gallery, features the work of Auckland furniture designer Humphrey Ikin, who was recently chosen by the New York design magazine *ID* as one of the top 40 international designers.

Having originally studied architecture at the University of Auckland, Ikin is a central and influential figure in the evolution of the Pacific design movement. He has worked as a free-lance furniture designer and maker for the past 15

years. His furniture is primarily constructed in wood, with aluminium and steel, and gives proof to the assertion that the domestic object deserves equal critical investigation.

This major commissioned show of Humphrey Ikin's works is an Artist's Project initiated by the City Gallery, Wellington and supported by Creative New Zealand, Arts Council of New Zealand Toi Aotearoa.

Facing North: Humphrey Ikin Furniture Designer continues until 16 August.



Donation means Auckland Museum Restoration can be completed

The restoration and redevelopment of the Auckland Museum can now be completed following a \$2.75 million donation from the ASB Charitable Trust. Mrs Judith Bassett, chairperson of the Trust, said the donation acknowledged the significance of the museum and its collections to the

Auckland and Northland regions.

Dr Rodney Wilson, Executive Director of the Auckland War Memorial Museum, said the donation made possible the completion of a vital programme of maintenance and renewal for Australasia's most visited tourist destination.

"It is a highly significant donation in its own right, but when combined with the newly negotiated ongoing funding by local authorities it will ensure the museum will never again slip into decline."

The restoration and development will be completed in December 1999.

Lectures

David Simmons will give the Auckland Museum Institute's first lecture for the year.

"A Canoe in Time" The Stories of the Auckland War Memorial Museum will cover some of the fascinating history of the site and the building and will be illustrated with slides.

Monday 8 June at 7:30pm
Parnell Community Centre
Members free, others \$5.

NOTE CHANGE IN VENUE.

As part of its 75th birthday celebrations, Forest & Bird has organised two lectures to be held in the Parnell Community Centre.

Sunday 21 June at 2:30 pm.
Hugh Robertson, Kiwi Recovery Team, will speak on "The Battle to Save the Kiwi".

Saturday 25 July 7:30pm
Liz Slooten, University of Otago.

"Hectors Dolphin Conservation: problem solved or problem shifted".

Entry to both by donation.

Dr Rodney Wilson discusses the Auckland Museum redevelopment with Mrs Judith Bassett, ASB Trust chairperson and Auckland Museum Trust Board chairman, Mr Barry Turley.

Behind the Scenes

Following the success of the behind the scenes visits to Natural History in March and April, we have arranged to visit the **Library on Thursday 11 June at 10 am**. We'll see

what is not always obvious to the general visitor and have librarian Janice Chong's expert guidance. As spaces are small and numbers must be limited, **RESERVATIONS ARE ESSENTIAL**.

Members have the opportunity to join the Department of Conservation and the Motutapu Island Restoration Trust in a **native tree planting trip to Motutapu** on Sunday 21 June.

This is a good opportunity to really help conservation in New Zealand and have a great day on an island in the Hauraki Gulf Maritime Park.

Bring lunch, warm clothing, raincoat and sturdy footwear for the day. Spades, trees, hot drink and sausage sizzle at the end of the day are provided.

Make bookings with Fullers, phone 367 9111. The trip costs \$14 for adults and \$7 for children. If members would like to team up with the Museum party, contact the Membership Programme Manager.

Auckland Regiment Centenary

The significant occasion of the centenary of the 3rd Battalion (Auckland (Countess of Ranfurly's Own) and Northland) R.N.Z.I.R was commemorated on 20 May 1998 with a dawn service at the Domain Cenotaph followed by the transfer of the original Colours of the Regiment from the Auckland Officers' Club to the Auckland War Memorial Museum for permanent display.

These colours were originally presented to the then 1st Battalion Auckland Rifle

Volunteers, Countess of Ranfurly's Own, by Lady Ranfurly as part of the celebrations for Queen Victoria's 80th birthday. According to a report made at the time 'the proceedings in the Domain were viewed by some thousands of spectators'.

On 19 May 1998, as part of the procedure for the transfer, a function was held at the Officers' Club to 'dine the colours out'. After the dawn service, the company and guests moved into the museum for the official handing over ceremony. A visit to

Scars on the Heart as a time for reflection concluded the proceedings.

The colours will be on permanent display in the new small gallery on the top floor opposite the Holocaust Gallery and, to coincide with the celebrations, the Museum is showing **The "Aucks": The Countess's Own Regiment**. This exhibition of silver, uniforms and medals of the Regiment is on display until September in the West Stair Hall landings from the ground floor to level Two and on the First Floor mezzanine.

Scree Life



After a two-day reconnoitre in December, a five member natural history team spent eight days in January collecting in the Craigburn Ranges, inland Canterbury. Ewen Cameron and Doug Rogan from Botany, John Early and Rosemary Gilbert from Entomology and Preparator David Weatherly collected representative flora, fauna and rocks from the extensive Canterbury scree (gravel) slopes to be able to recreate a small scree portion in the Museum's new natural history galleries.

The low rainfall, combined with the ranges uplifting and the weathering action by freezing ensures an on-going supply of fresh rock for the scree slopes.

Collecting during the days and sorting and cataloguing during evenings in the Landcare Research hut, the team were able to return with all the essential items for display.

Other gallery field work continues in the Desert Road area and at more local sites for other natural history displays.



Rannunculus haastii - the scree buttercup.

For your information

Auckland War Memorial Museum
Private Bag 92018
Auckland
New Zealand

Telephone 09 309 0443
InfoLine 09 306 7067
Facsimile 09 379 9956

Director Dr TL Rodney Wilson

Hours 10am to 5pm daily

Open every day except Good Friday and Christmas Day

Admission is free
Charges for Special exhibitions may apply

Donations welcome.

Free guided tours are available for groups on most days.

For information on Membership ring 306 7044

For information on exhibitions, public programmes or events ring the InfoLine: 09 306 7067

First Colours Presented by the Countess of Ranfurly