

# New Galleries on the Horizon

On May 16, at three separate functions for the media, Institute Members, and official guests, *The Heritage of Genghis Khan* exhibition was launched to the Auckland public.

Public response has been very good and the media provided extensive pre-exhibition publicity. We believe that the documentary series screened on regional television during the exhibition has doubled their audience ratings for these evenings: further evidence of the interest in Auckland in the history of Asian cultures.

The Museum introduced *Inform*, a random access audio guiding system to the New Zealand public with the Genghis Khan exhibition. This is the first manifestation of a joint-venture between Acoustiguide Corporation of New York and Auckland Museum to provide *Inform* to various venues in New Zealand. Again our audience's response has been excellent.

## Visitors catch a glimpse behind the scenes


On 25 May Auckland Museum threw open its doors (almost all of them!) to 1255 visitors for its first annual Museum Open Day. A self-guided behind the scenes tour was offered which took visitors into areas 'back of house' where staff presented displays of rarely seen objects, and demonstrations featuring current research techniques in the Museum's various curatorial departments. Public response was enthusiastic and extremely positive. Keep an eye out for information on next year's Open Day.



Work has commenced on the seismic strengthening of the Museum building. Starting with the eastern *Palm Court* lightwell, and then moving on to the equivalent space on the western side, this work temporarily displaces the Museum Coffee Shop and Retail Shop. Both facilities will be returned by Christmas, each with a totally new look and improved services. The seismic works also deliver two new galleries at first floor level and two on the top floor.

Work is progressing very satisfactorily on the second part of the *Scars on the Heart* exhibition, The Armoury (a multimedia and print media resource room), restoration of the two top floor sanctuaries, and the two new aircraft galleries. These will be open by Christmas.

Creative production has also begun for the five Natural History galleries and two of these will be delivered in 1997. Also planned for that year is the second Children's Discovery Centre.

Whilst the Museum staff and contractors make every effort to minimise the disruption to our public, there is no escaping the fact that, at times, visitors are inconvenienced. We regret that deeply, but ask all our visitors to bear with us. The results will justify that sacrifice. 

A handwritten signature in blue ink that reads 'Rodney Wilson'.

TL Rodney Wilson  
Director



# Exhibitions

## TeraMedia's World of Whales


A pod of nine life-size whales completed a 9,000 km journey (by sea) from Hong Kong, when they arrived at Auckland Museum on Thursday 30 May. This collection of animated creatures will be on view at the Museum for three months as part of our latest international exhibition *TeraMedia's World of Whales* which opened to the public on 14 June. The show came to Auckland after a four month stint at the Hong Kong Science Museum and will be on view until 29 September.

*TeraMedia's World of Whales* provides a multi-sensory experience with the sounds of haunting whale calls, gurgling ocean waves, and the thumping of a whale heartbeat. These combine with the movements of nine animatronic creatures, which operate on air pressure. The whales which make up the core of the exhibition represent the major categories of whale adaptations. They also illustrate behaviours such as the singing humpback, the deep diving sperm whale, the speed swimming orca, the filter feeding right whale, and the migrating grey whale.

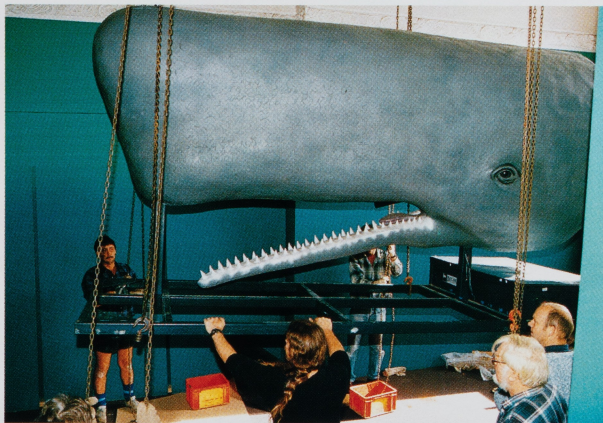
More than just an exciting visual experience, the exhibition provides valuable information on the behaviours, functions, and evolutionary history of these gentle and intelligent creatures through interactive displays. Included are features such as a 3-dimensional jigsaw puzzle, a Bernoulli Ball, a weight of water display; and opportunities to access the award-winning CD-ROM *World of Whales*, produced by the exhibition's sponsor TeraMedia.

Produced by Dinamation International, a company whose mission is education through entertainment, the exhibition is said to have been created "to be seen and enjoyed. But they (the

whales) are also designed to be viewed in the larger context of how all life on Earth functions." The public programmes developed in conjunction with the exhibition help to provide that wider, educational context. Events include high profile community activities such as whale rescue training at Mission Bay and Takapuna Beach, a resource kit for schools, teacher workshops, special school holiday programmes, and a lecture series featuring international whale experts.

Related displays will be provided by World Wide Federation for Nature, NZ, Greenpeace NZ, and TVNZ's Natural History Unit. 

*The giant whale models, like this 3.7m long Sperm Whale head, posed a few logistical challenges for Museum installation staff.*




## Puti Rare Display Opens in August


In August Auckland Museum will be mounting a special exhibition to honour the life and work of Puti Hineaupounamu Rare, an expert Maori weaver now living in Auckland. Belonging to Ngati Kinohaku of Ngati Maniapoto, Puti was born at Te Kuiti in 1916, the youngest of nine children. She spent her formative years in a family strong in traditional Maori crafts, learning from her mother and aunts all the arts of flax work.

After retiring to Auckland, Puti established her reputation as a meticulous weaver of very fine taniko and feather cloaks. Many groups and institutions are deeply indebted to Puti for permitting her work to be used in displays and also for her popular and informative demonstrations of her skills. The



Auckland Museum exhibition will feature works from various periods of Puti's career, complemented by photographs. A small book celebrating Puti's artistry will be published at the same time. 

## Fletcher Challenge Ceramics Award

The 20th Fletcher Challenge Ceramics Award, the longest running and only annual international arts award in New Zealand, will be on view at Auckland Museum 26 July through 25 August. This special anniversary exhibition will feature the work of current exhibitors as well as a special display of all previous winners. A total of 162 pieces from 28 countries have been selected from 976 entries for this year's Award. Twenty-four New Zealand artists were accepted this year. Prizes include a Premier Award of \$20,000, four awards of \$5,000, plus commendations. This year's 100 page colour catalogue will include a history of the Award, an interview with the judge, and illustrations of pieces in the current show as well as those of previous winners. The catalogue will be offered for sale at the exhibition. 

Organisers of the 1996 Fletcher Challenge Ceramics Award invite Museum Members to attend a forum entitled *Clay for Art's Sake* on Sunday 28 July, 1-10 pm at Unitec, Building One. Panelists from Ireland, Germany, Australia, and New Zealand will discuss selected pieces from the 1996 Award and examine issues relating to contemporary ceramics. This event is supported by Creative New Zealand. For further information and to book ring Auckland Studio Potters (09) 634 3622.


# News

## New Military History Resource Centre

Museum Members will by now have experienced the moving stories contained in *Scars on the Heart*, which opened in February 1996. The second stage of *Scars on the Heart*, covering World War II through to present peace-keeping activities, is scheduled to open at the end of this year. Opening in association with the second stage is an exciting new development, the Armoury.

The Armoury will serve two functions: to present a display of the Museum's outstanding small arms collection, as well as swords, medals and uniforms; and to provide a major resource centre for military history.

Library staff are involved in the development of the information centre, which will contain a variety of media including books, serials, microfiche and microfilm, photographs, maps, film video and sound recordings, oral histories and vertical files. A number of databases and programmes using modern technologies will complete this exciting, multi-media centre. Resource Centre staff would appreciate any donations of material for the Centre, especially books about New Zealand's military history, biographies of New Zealanders prominent in the services, magazines, diaries, letters or papers on a military theme.

If you are able to assist with such resources we would be happy to hear from you. Please contact Janice Chong or Maureen Sole at the Museum on ext. 802. 


## Human History Database

Exciting things are happening in the Registration Department as Oliver Stead and Tony Rasmussen prepare to set up the Museum's Human History Database. This is a computerised cataloguing, registration and collection management system which will eventually pull together all the records relating to objects in the Applied Arts, Archaeology, Ethnology and History collections. The Library's pictorial collections may also be included on the Human History Database.


## Auckland Museum Introduces State of the Art Audio Guide Services

The new state of the art audio guide service introduced for *The Heritage of Genghis Khan*, will become a permanent fixture at Auckland Museum. The new technology embodied in Acoustiguide's *Inform*, with its random access and ease of use, marks a major step forward in electronic museum guiding systems. Later this year, Auckland Museum will offer two collections-based tours. One will feature the Museum's Maori Galleries. The other will feature both parts of the *Scars on the Heart* exhibition and the other New Zealand at War galleries.




At present there are many different systems for recording details about the several hundred thousand objects in the Human History collections, and these have never been brought together in one place. With the present system it is very difficult for staff to search for references to specific objects among the many different files and registers that have grown over the years. With the new database, Museum staff will be able to access details about objects in all of the Human History collections from networked workstations. On-line public access to the database is one of the main long-term objectives of the project. 

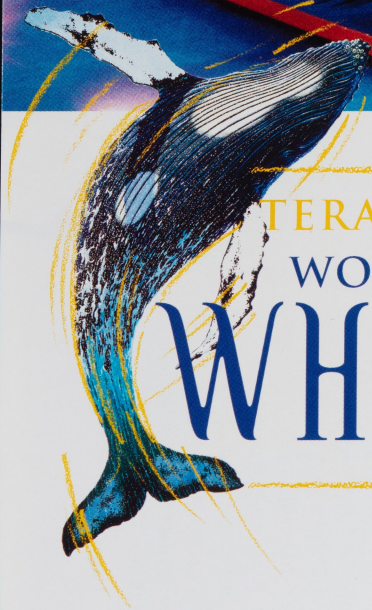
## New Field Guide by Museum Curator Released

A new field guide was published recently by David Bateman Ltd. Entitled *New Zealand Frogs and Reptiles*, it is a handy colour guide to the nearly 60 species of frogs, lizards, tuataras, turtles, and sea snakes that inhabit New Zealand and its surrounding waters. The book was written by Brian Gill, Curator of Land Vertebrates, in collaboration with Tony Whitaker of Motueka who took most of the photographs. The amount of colour was subsidised by a grant from the New Zealand Lottery Grants Board. The guide is available in bookshops for \$24.95. Museum Members may purchase copies in the Museum Shop at a 10% discount. 

## New Assistant Director of Collections Appointed

Michael Evans, Deputy Director of Sovereign Hill Museum, Ballarat, has been appointed Assistant Director Collections. He will commence duties on 24 June. Michael is an historian and has an M.A. from Monash and first degree from Melbourne University. He has taught at Melbourne University and is currently a part-time member of faculty at Ballarat University. He brings a variety of appropriate skills to his new position and is sure to provide good leadership and strong vision to the Collections division. 





INTERMEDIA'S  
WORLD OF  
**WHALES**

**14 June - 29 September**

This exciting exhibition of life-size robotic creatures offers insight into the behaviour, functions, and evolutionary history of these gentle and intelligent creatures through innovative interactive displays.

*Admission: Adults \$7, Members \$5, Children \$5, Family \$18, Concessions apply.*

**Fletcher  
Challenge  
Ceramics  
Award**

**26 July - 25 August**

New Zealand's annual celebration of the ceramicist's art commemorates its 20th anniversary with the largest ever exhibition, including



**What's Happ**

**Challenge  
Ceramics  
Award**  
26 July - 25 August  
New Zealand's annual

celebration of the ceramicist's art commemorates its 20th anniversary with the largest ever exhibition, including 162 pieces from 28 countries, as well as a special display of previous winners of this prestigious award.

*Admission charged at entry, concessions offered for superannuitants, students, and Museum Members.  
Open Wednesdays until 8pm.*



### **Puti Rare** 9 August - mid 1997

A special exhibition honouring the life and work of Maori weaver Puti Hineaupounamu Rare, known for her fine taniko and feather cloaks. The exhibition will feature works from various periods of Puti's career, complemented by photographs.

### **ON-GOING**

#### **Weird & Wonderful**

Auckland Museum's permanent natural history discovery centre provides hands-on fun for children and adults of all ages.

*Admission: \$1, Dinomites Members Free*

#### **Scars on the Heart**

The stories of the New Zealand Wars, the Anglo-Boer War, and World War One reveal New Zealand's emerging sense of identity through times of conflict and war. New display technologies bring to life this first stage of Auckland Museum's Refurbishment Project.

*Admission: Adults \$5, Concessions and Members \$3, Family \$10 (includes Colonial History Galleries)*

**For information on Membership ring  
Barbara Russell (09) 3090443 (ext. 714)**

### **COMING SOON**

#### **Scars on the Heart II**

*Opening in November*

The continued journey through New Zealand's war history featuring World War II through to present day peace-keeping activities

#### **Flags of the Fante Asafo**

*Opening 20 September*

130 vibrant full size appliqued flags of the Fante people of Ghana



# Opening



**Auckland Museum**

*Te Papa Whakahiku*

Infoline  
**09 377 3932**

# Events

## The World of Whales Lecture Series

Lectures will be held every Wednesday evening from 7.30 pm – 9.00 pm in the Coffee Lounge, Auckland Museum. Entry by EAST door. Suggested Donation \$5

### 3 JULY

“Wandering Whales of the World”  
Dr Scott Baker, University of Auckland

### 10 JULY

“The Making of the TeraMedia CD-ROM – The World of Whales”  
Craig Meek, Terabyte Interactive Ltd

### 17 JULY

“The International Whaling Commission and the Future of Whale Conservation”  
Mike Donoghue, Marine Mammal Policy Advisor to the Department of Conservation, and Scientific Advisor to the NZ Commissioner to the International Whaling Commission

### 24 JULY

“Whale Legends of Old, and the Story of Paikea”  
Mere Whaanga (Ngati Rongomai Wahine and Ngati Kuhungunu), and Nikki Searancke (Ngati Porou)

### 31 JULY

“Songs of the Humpbacks”  
Dr David Helweg, University of Auckland

### 7 AUGUST

“Orca of NZ - where do they go, what do they eat, and how many are there?” Illustrated by slides taken during years of research  
Ingrid Visser, The Orca Project, Ngunguru

### 14 AUGUST

“Whales, Dolphins, and Human Culture”  
Verna Amante-Helweg, University of Auckland

### 21 AUGUST

“What they see and what they hear as they and whales travel our oceans”  
Royal NZ Air Force and the Royal NZ Navy

### 28 AUGUST

“Whaling in New Zealand Waters”  
Dr Nigel Prickett, Auckland Institute and Museum

### 4 SEPTEMBER

“Two Women on Campbell Island – Their Studies of the Sub-Antarctic Right Whales”

Barbara Todd and Ramari Stewart

### 11 SEPTEMBER

“The Making of a Whale of a Documentary”

TVNZ Natural History Unit

### 18 SEPTEMBER

(Unconfirmed)

“The World of Whales”

Dr Roger Payne from Britain, internationally renowned wildlife biologist and whale authority

**This lecture series is supported by Air New Zealand National and Sheraton Auckland**

## Community Events

### Mission Bay – A Whale of A Day

Sunday 7 July

**11.00 am** *Free Willy* at Berkeley Theatre, Mission Bay (\$5 adults, \$3 Children)

**12.30 pm** Picnic lunch on your own, show your movie ticket at McDonald's for free fries

**1.30 pm** Join us at Mission Bay for a whale rescue demonstration with Project Jonah.

### Takapuna – A Whale of A Day

Sunday 4 August

(Last day of Conservation week)

**11.00 am** *Free Willy* at Berkeley Theatre, Anzac Street, Takapuna (\$5 adults, \$3 Children)

**12.30 pm** Picnic lunch on your own, show your movie ticket at McDonald's for free fries

**1.30 pm** Join us at Takapuna Beach for a whale rescue demonstration with Project Jonah.

Wear warm play clothes and be prepared to help us clean up the beach! Adult supervision of children is required.

*Please Note: Programme subject to alteration*

## Lectures

### Visiting Natural Historian, Dr David Bellamy

Tuesday 9 July, 2.30 pm  
Venue: Onehunga High School

Auckland Museum is pleased to present a lecture by Dr David Bellamy, a natural historian who, in the '70s, became known to thousands as 'Botanic Man' through his many TV presentations and books. Dr Bellamy is a dynamic communicator whose enthusiasm is infectious. This lecture is presented in conjunction with the Royal Society of New Zealand and the Auckland Science Teachers Association. Due to the refurbishment programme we are unable to use the Museum as a venue and we are grateful to Onehunga High School for their willingness to assist.

## Music in the Museum

Saturday 29 June, 2.30 pm  
Auckland Museum  
Furniture Gallery  
All welcome

The Oriana Consort will present a programme of French, Italian, Spanish and English Madrigals at the Museum

## TeraMedia's World of Whales Activities for Children

Monday through Friday,  
1 – 5 July and 8 – 12 July

- Mondays Dancing dolphin windows
- Tuesdays Make a marine mobile
- Wednesdays Create a bottled sea scene
- Thursdays Make a papier mache dolphin
- Fridays Invent a whale board game

**Cost: \$4 (Dinomites \$3)**

Bookings are essential, call Florence at the Museum on ext 738

**Fletcher Challenge Ceramics Award Lecture Series**  
 Each year we are privileged to host a lecture given by the judge of the Fletcher Challenge Ceramics Award. For this, the 20th year of the award, we are delighted to announce two additional speakers.

**Fletcher Challenge Ceramics Award Judge's Talk**

**Tuesday 23 July, 7.30 pm**  
**Auckland Museum Supper Room**  
**Entry by EAST door**  
**Suggested donation \$5**

The judge of the 1996 Fletcher Challenge Ceramics Award, John Chalke, brings 32 years of experience as a ceramicist to his task of making this year's Award. English-born, but now based in Canada, he has an international reputation and is best known for his abstracted and highly textured wall-pieces, as well as his wood-fired, soda-glazed tableware.

**Japanese Ceramics**

**Tuesday 30 July, 7:30 pm**  
**Michael Robinson (UK)**  
**Auckland Museum Supper Room**  
**Entry by EAST door**  
**Suggested donation \$5**

Former Keeper of Decorative Arts at Ulster Museum, curator, lecturer, writer and historian, Michael Robinson will present an illustrated view of the longest ceramic history on record.

**Contemporary German Ceramics Since the '50s**

**Monday 5 August, 7.30 pm**  
**Gabi Dewald (Germany)**  
**Auckland Museum Supper Room**  
**Entry by EAST door**  
**Suggested donation \$5**

An illustrated overview of changes in German ceramics and the reasons for them presented by Editor in Chief of *Keramik* Magazine Germany, journalist and art critic, Gabi Dewald.

**Members' Evening**

Join us for a private Members' viewing of the Fletcher Challenge Ceramics Award.

**Thursday 8 August**  
**6.00 to 8.00 pm**

Members free, Exhibition entry fee applies to Non-Members.  
 Entry by WEST door  
 RSVP to Barbara Russell,  
 309 0443 ext 714

**A Whale of a Trip for Members aboard the Te Aroha**

**Sunday 15 September**  
**8.30 am to 5.30 pm**  
**Cost \$20 Members, \$30 Non-Members**  
**Meet at Hobson Wharf behind the Maritime Museum**

Bring a picnic lunch, morning and afternoon teas provided. Wear warm clothes and comfortable walking shoes, and bring a rain jacket.

This special journey aboard the historic *Te Aroha* will take you on a voyage around the Hauraki Gulf. Details of the exact route are weather dependent and will be provided on the day. On board, tales of the whaling industry in New Zealand will be told by Curator of Archaeology, Nigel Prickett; the wanderings of humpbacks and the place of DNA testing in the conservation of whales will be discussed by Scott Baker of the University of Auckland; and Mike Donoghue of the Department of Conservation will speak on the future of international whale conservation.

In the event of high winds the trip may be cancelled. Cancellation will be broadcast immediately following the 7.00 am news on IZB.

**RSNZ Membership Discounts**

As many of you know, Auckland Museum is a regional branch of the Royal Society of New Zealand, an independent, national academy of sciences, and a federation of scientific and technological societies, which promotes science and technology in New Zealand. As a Member of Auckland Museum you may become an individual member of the RSNZ at a reduced rate of \$30 per year (regularly \$40). If you are a member of other societies affiliated with the RSNZ there are further concessions on individual membership. For further information on the benefits of RSNZ individual membership please phone Barbara Russell at the Museum, ext 714, or contact the Royal Society directly on (04) 472 7421, or Fax (04) 473 1841.

**FREE Admission to TeraMedia's World of Whales**

**One day only, Thursday 11 July.**  
 Show your Auckland Institute & Museum or your Dinomites Membership card and enjoy free admission to *TeraMedia's World of Whales*.

**REMINDER**

There are still tickets available for the trip to Melbourne to see the Three Tenors Concert. For further information please refer to the April issue of MQ, or ring Barbara Russell at the Museum, ext 714.

**BOOKING FORM**

MEMBERS' TRIP ABOARD THE *TE AROHA*

Please complete this form and return it with your payment to:

**Barbara Russell, Membership Programme Manager, Auckland Museum, Private Bag 92018, Auckland**

Name(s): \_\_\_\_\_

Contact phone number: \_\_\_\_\_ (day)  
 \_\_\_\_\_ (a/h)

Number of people attending: \_\_\_\_\_

Members (\$20) \_\_\_\_\_

Non-Members (\$30) \_\_\_\_\_

Amount enclosed: \_\_\_\_\_

*Your booking will be confirmed by mail.*

## **Weird and Wonderful Holiday Activities**

Discover the glorious world of things that 'stink and squirm' and learn the dark and dirty secrets of decay.

See maggots multiply... watch fungus fester... all this and more in Weird and Wonderful's tribute to putrefaction:

### **Mould and Maggots**

For a small additional cost visitors can take part in our craft activities which will be available throughout the holidays.

### **Know Your Museum - a Sunday Search.**

Come along to the Auckland Museum to find out more about your favourite topics:

#### **Sunday 28 July -**

**Ancient Egypt.** Take a close up look at ancient Egyptian artefacts and then make your own mask

#### **Sunday 11 August -**

**Colonial Auckland.** Take a guided tour around Colonial Auckland and then try your hand at buttermaking

#### **Sunday 25 August -**

**Fossils and Dinosaurs.** Have a closer look at fossils and then make your own dinosaur diorama

#### **Sunday 7 September -**

### **Wonderful World of Whales.**

Take a guided tour around the TeraMedia's World of Whales and then make your own dolphin puppet.

**All sessions are suitable for 7 years and older and will be held from 10.30 am - 12 noon.**

**The cost is \$6.00 per child (\$5.00 for Dinomite Members)**

**Bookings are essential, please contact Florence on 309 0443 ext 722**



*Members enjoy a field trip with Curator of Botany, Ewen Cameron.*

## **InfoLine - 09 377 3932**

The Museum's InfoLine has become an essential tool for getting information out to the public about our programmes and exhibitions. Members are encouraged to confirm all events by calling the InfoLine. Our new service provides touchtone access to up to date information on current exhibitions, Maori cultural performances, tours, Membership, and holiday programmes, lectures, and special events.

### **0900 LINE available for Donations**

Many thanks to those of you who have made donations to the Museum 2000 refurbishment project by calling our new donations line **0900 30 100**.

The 0900 service was set up to provide a quick and easy way for Members to make automatic donations to the project. Calls cost \$10 including GST. Children, ask your parents first.

### **A Happy Pod!**

Museum and corporate interests have come together in an irresistible way in the World of Whales Exhibition now on at the Museum. The exhibition has brought together a partnership involving TeraMedia, NZ Geographic and TVNZ as sponsors. Each company in its own way has a strong link with these magnificent, gentle mammals of the deep.

TeraMedia's latest CD-ROM - coincidentally named World of Whales - has already won acclaim with several international awards. The CD-ROM will be featured as a hands-on interactive within the exhibition and visitors will be able to purchase the disk at a special price in a retail area at the exit to the exhibition.

NZ Geographic features the humpback whale in their June publication. Included in this edition is a magnificent whales poster. Again, visitors to the exhibition will be offered an opportunity to purchase this edition at a special price.

TVNZ, via its own Natural History Unit, are also fully committed to whales, through monitoring and documenting their behaviours and lifestyles in the Southern Oceans.

In addition, Air New Zealand and Sheraton Hotels are supporting the

World of Whales Lecture Series, Naturally Kaikoura are offering a 'Whale Watch' exhibition prize, and Fox Air Specialists are providing the compression equipment to 'animate' the exhibits.

According to the Museum's Marketing Manager, Scott Elliffe, the partnership of commercial and museological interests is a 'near perfect' fit. He describes it as a superb balance between the educational values of the institution and the profit motives of corporates. 'At the end of the day we're all about informing and enriching people's lives - whether via CD-ROM, books, television or museum exhibit. If we have a good product and offer a valuable experience, then profits (whether financial or social) will naturally flow.'

## **For Your Information**

### **Auckland Institute and Museum**

Private Bag 92018  
Auckland  
New Zealand

Telephone 09 309 0443  
InfoLine 09 377 3932  
Facsimile 09 379 9956

**Director** Dr. T L Rodney Wilson

**Hours** 10 am to 5 pm daily

Open every day except  
Good Friday and Christmas Day.

Admission is free,  
Charges for Special exhibitions  
may apply.

Donations welcome.

Free guided tours are available  
for groups on most days.

For information on Membership  
ring Barbara Russell (ext. 714)

For information on exhibitions,  
public programmes or events ring  
the InfoLine: 09 377 3932



**Auckland Museum**

*Te Papa Whakahihi*