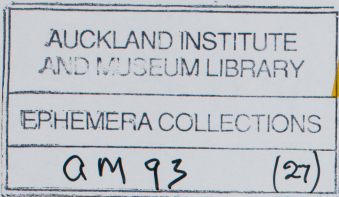
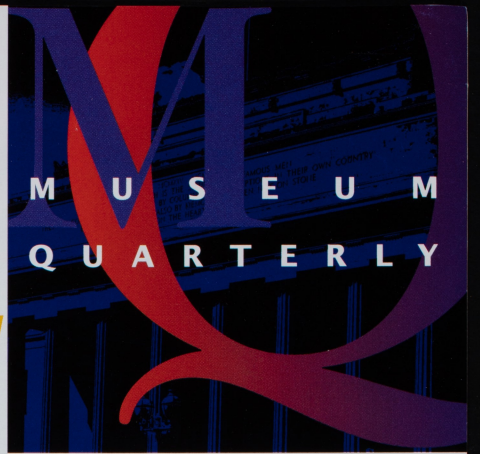


New Look for all



As we move into the second quarter of 1997, the third year of the Museum's five year Refurbishment Project, it is salutary to look back on what has been achieved and forward on those works still to be completed.

Smoke extract fans and fire separation doors have been installed in strategic locations throughout the building, new toilets have been built, most level two areas have been completed, the revamped Museum Store is open and the café will open in a few months, and the major seismic strengthening works at the front of the building have been finished. The base heating and ventilating plant has been installed and new Ethnography storage and Botany facilities have been developed.

It's a good start, but we have a long way to go yet.

1997 is a somewhat disparate year. In addition to the store and café completions, visitors will discover the new aircraft galleries in the middle of

the year (restoration of the aeroplanes is underway and visible in the new spaces on level 2) and two small galleries will present New Zealanders' stories of the Holocaust and interpret the Museum building.

The entry to the Museum will be restored, along with new cloak facilities and an Admissions/ Information desk offering new visitor services. These are all part of a foyer restoration that

progressively restores all three levels of the hypostyle hall. On level one, adjoining the hypostyle hall, two new decorative arts galleries and the restored Logan Campbell Gallery will open in November. Further back, adjoining **Weird and Wonderful**, a second Children's Discovery Centre "Treasures and Tales", will open at the same time.

While all of that is happening the creative and project teams preparing the five new Natural History galleries are at work. All five galleries will be opened at the end of next year, forming a single compelling story about New Zealand, its origins and geology, and its flora and fauna. Seismic strengthening of a large sheer wall adjacent to the southern courtyard and the entire refit of the ground floor galleries (scheduled for 1999) complete the project.

There is much to be done, and the impact of refurbishment works on staff will begin to be more strongly felt.

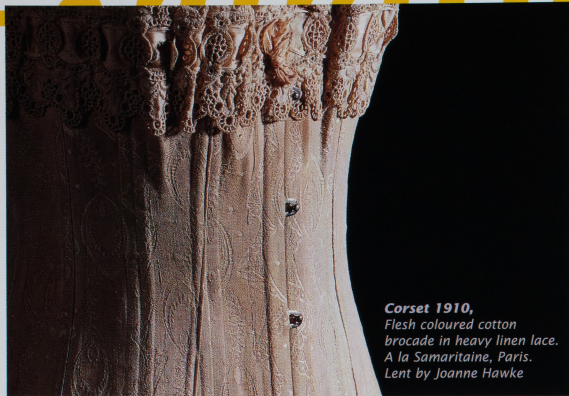
The new Trust Board has announced in its Annual Plan, that servicing the refurbishment works is its first priority and developing the public focus and visitor services of a modern dynamic Museum follow closely. These are exciting times of change for the Museum and when the dust of the refurbishment works has finally settled, Aucklanders' pride in a fine Museum, that retains the best of its traditional roles and welds to them the services of a modern Museum, will be redoubled. 

Rodney Wilson, Director

Tim Lichtenstein in the new book department of the refurbished Museum Store



Exhibitions



Corset 1910,
Flesh coloured cotton
brocade in heavy linen lace.
A la Samaritaine, Paris.
Lent by Joanne Hawke

Bendon
CELEBRATING 50 YEARS

**NZ Woman's
WEEKLY**

Next to Nothing

A history of lingerie

2 May – 15 June

Next to Nothing promises a fun and informative rummage – for the first time ever – through the museum's linen drawers to tell the story of women's underwear in the twentieth century.

For anyone who enjoyed the Art Gallery's Worth to Dior exhibition, you'll love this opportunity to see the finery beneath the finery.

Organised to celebrate the 50th anniversary of Bendon, New Zealand's most innovative and leading underwear manufacturer, the museum's Assistant Curator of Applied Arts, Angela Lassig, has selected some 150 garments to depict the evolution of underwear in this most eventful of centuries – an evolution shaped by technological and social change as well as the constant ebb and flow of fashion.

Next to Nothing is a sensual look at the designs of lingerie since Victorian times, the fabric used throughout the eras, and a social history of women and attitudes to the shape of women which have changed so dramatically over the years.

Set designer and ceramist John Parker has come up with a sumptuous design which incorporates gilt mirrors and period furniture from the collection. Three costumes – including the beaded 1926 silk wedding gown – will also be featured with appropriate undergarments. Of particular interest for many will be the focus on corsetiere Kay Goodson who strapped and laced Auckland women into shape for over fifty years.

**Admission: \$7 adults,
\$5 concessions, \$4 members**

Tea, Talk & Tour for Groups

**Weekdays,
9.30am & 10.00am**

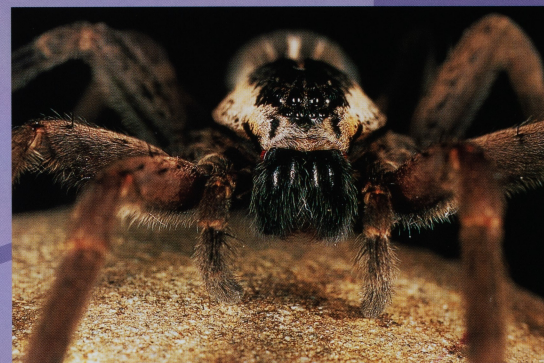
Why not get a group together and join fictitious 1930s characters – Betty Peters or Cecily Walter – on a fun and informative trip down the **Next to Nothing** memory lane.

The tours include a refreshing cup of tea and none other than a cucumber sandwich.

Tickets are just \$10 per person for groups of 10 or more and bookings can be made by telephoning 09-309 0443 ext 640 during office hours.

SPIDERS

LIFESTYLES OF THE SMALL AND HAIRY



5 July – 26 October

Twelve live tarantulas, imported especially from San Francisco, take up centre stage of what will be another great show for adults and youngsters alike.

Spiders are a success story with few rivals. From the size of a dinner plate to a pin head, an estimated 120,000 different species live everywhere from 7,000 metres up in the Himalayas to beneath the sea.

Simon Pollard, a leading entomologist from Christchurch, has taken a light-hearted populist approach evidenced by funky titles, the inclusion of fun models, cartoons and humour.

Six themed displays will introduce visitors to the spider lifestyle and explore the spider in all its diversity.

**Admission: \$5 adults,
\$3 concessions, \$12 Family Pass**

Spiders Events

Lectures

**\$5 (Members \$4)
– entry by West Door**

Wed 9 July 7.30pm, Supper Room

Dr Simon Pollard, Arachnologist and Curator of the 'Spiders' exhibition presents a lecture entitled 'Spiders! Lifestyles of the Small and Hairy.'

**Wed 20 August 7.30pm,
Supper Room**

Dr Robert Jackson, Zoologist University of Canterbury presents a lecture entitled 'What is that Spider Thinking?'

**Wed 27 August 7.30pm,
Supper Room**

Mr Neville Blampied, Senior Lecturer in Psychology, University of Canterbury presents a lecture entitled 'Arachnophobia.'

A strong leaning towards "Useful Objects" for this year's Fletcher Challenge Ceramics Award

8 May – 8 June

A sound New Zealand presence, coupled with recent works from 18 previous stars of the show have combined to make this year's Fletcher Challenge Ceramics Award one of the best in the exhibition's 21-year history.

John Parker is responsible for the exhibition design which promises to be a dramatic contrast to his designs for the underwear show next door. John is, of course, one of New Zealand's leading ceramists and is included in this year's exhibition.

A total of 16 New Zealanders will show works in this award exhibition which features works from 96 leading ceramists from around the world. This year's judge is Janet Mansfield, one of Australia's best-known salt-glaze potters. With Mansfield's leaning towards "useful objects", it is not surprising that this year's exhibition is strong on works which are both functional and decorative.

**Admission: \$7 adults,
\$5 concessions, \$4 members**

Lecture

John Parker, Exhibition Designer
Exhibition Design and the Fletcher Challenge Ceramics Award

Wednesday, 14 May, 7.30pm, Supper Room (entry by West Door)

**\$4 Members, \$5 non-members
(includes a brief visit to the exhibition)**

What's Happening



Auckland Museum
Te Papa Whakahaere

InfoLine
09 306 7067



Corset, 1910. Flesh coloured cotton brocade in heavy linen lace. A la Samaritaine, Paris. Lent by Joanne Hawke



ON-GOING

Whariki: The Traditional Mats of Biddy Konui

An exhibition of traditional raranga showing whariki sleeping mats and kete whakairo, patterned baskets by master weaver Biddy Konui and her students. Free entry.

Scars on the Heart

A powerful and moving account of New Zealand at war from the mid-19th century to the present day. This permanent display examines the impact of war through the eyes of those involved by way of photographs, letters, diaries and equipment of war from the museum's outstanding war collection. Free entry.

SCHOOL HOLIDAYS

Insects, Birds, Bats... At Weird and Wonderful

5 - 20 July.
Activities: 10am-12 noon & 2pm-4pm daily
Please call **Weird & Wonderful** on 09 309 0443 ext 708 or the **InfoLine** for further details.

For pottery workshops, talks and other children's activities coming up please call Florence during office hours on (09) 309 0443 ext 804.

2 May - 15 June

A fun and informative rummage through the linen drawers of our past.

Organised to celebrate Bendon's 50th anniversary, this sumptuous exhibition reveals - for the first time ever - Auckland Museum's exquisite undergarment collection.

Bendon
CELEBRATING 50 YEARS

The exhibition brings together over 150 garments to depict the evolution of underwear in this most eventful of centuries - an evolution shaped by technological and social change as well as the constant ebb and flow of fashion.

Admission: \$7 adults, \$5 concessions, \$4 members

NZ Woman's WEEKLY

The Fletcher Challenge Ceramics Award

8 May - 8 June

A strong New Zealand presence, coupled with recent works from 18 previous stars of the show have combined to make this year's Fletcher Challenge Ceramics Award one of the best in the exhibition's 21-year history.

A total of 16 New Zealanders will show works in this award exhibition which features works from 96 leading ceramists from around the world. This year's judge is Janet Mansfield, one of Australia's best-known salt-glaze potters.

Admission: \$7 adults, \$5 concessions, \$4 members

Spiders

Lifestyles of the Small and Hairy

5 July - 26 October

Twelve live tarantulas take up centre stage of what promises to be another great show for adults and youngsters alike. Simon Pollard, a leading entomologist from Christchurch, has taken a light-hearted populist approach using funky titles, fun models, cartoons and humour to tell the spider success story.

Admission: \$5 adults, \$3 concessions, \$12 Family Pass



In Brief...

Zero and Spitfire on the move – for the Final Time

The Zero and Spitfire aircraft, which were dismantled and moved into storage last year, have been moved, section by section, into their brand new galleries at the top of the newly enclosed Palm Courts.

For the next three months Museum visitors will be able to watch – from a distance – a team of aircraft experts cleaning and conserving both aircraft as they're reassembled.

Museum staff are working with George Bailey, a Metals Conservator from the Australian War Memorial in Canberra, on the project. The Australian War Memorial is a leader in aircraft conservation for museums. The Subritzky family of Aircraft Component Engineering – local aviation specialists – are also involved.

Together, the group has developed a conservation report which outlines the work that needs to be done. "Both aircraft are in exceptionally good condition given their age and are really in need of some museum treatment – and a bit of elbow grease" says History Technician Myfanwy Eaves. "There is corrosion in the Zero's wing spars which needs to be addressed and we know that there are problems with corrosion inside the engine. The Spitfire has some corrosion in its undercarriage and paint problems with one wing."

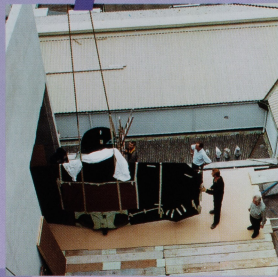
The Zero, which has been painted a number of times over the years, will be repainted in authentic Japanese aircraft colours. The Spitfire will also be repainted in camouflage colours.

Funding for the project has been provided by the NZ Lottery Grants Board and the Whitney Family Trust.

PLEASE NOTE:

Compaq Computer Open Day Date Changed

Please note that the Compaq Computer Open Day will now take place in September, not May as advertised in the last MQ.



Staff News

The Oruarangi Bulletin

A three year project was recently completed with the publication of Louise Furey's "Oruarangi: the archaeology and material culture of a Hauraki pa", as number 17 in the museum's Bulletin series. Louise's employment and other costs of the work were paid for by grants from the New Zealand Lottery Grants Board and the Foundation for Research, Science and Technology.

The museum holds 2303 Maori artefacts from Oruarangi, near Thames, as an important part of the Archaeology Department collection. The collection is the largest recovered from any Maori settlement site in New Zealand.

The bulletin brings together all that is known of Oruarangi, beginning with the visits of Cook in 1769 and the timber cutting gangs of the early 1800s.

But mostly it deals with the artefacts. Personal ornaments, bone toggles, tattoo chisels, bird spear points, sewing and thatching needles, fishing gear, adzes and chisels, musical instruments, weapons, pumice pots, patu muka, grindstones and other items were found in astonishing number and variety. The Oruarangi bulletin is a wonderful resource for the identification and understanding of pre-European Maori material culture, as well as a particular account of what was clearly an important place for the people of Hauraki.

"Oruarangi" is available from the new Museum store for \$20.

"Oruarangi" is available from the new Museum store for \$20.

Children

SCHOOL HOLIDAYS

Spinning Spiders

Mondays 7, 14 July

Take a tour around the exhibition 10.30am-11.00am or 11.30am-12.00pm

Tuesdays 8, 15 July

Screen print your own spiders T-shirt

Wednesdays 9, 16 July

Make a spider mobile

Thursdays 10, 17 July

Design your own spiders and flies board game

Fridays 11, 18 July

Make your own spider spinning its web

7 yrs +. Craft activities:

10.30am – 12.00pm.

Guided tours – \$6 per child,

\$5 (Dinomites) – includes exhibition entry

Craft activities – \$5 per child,

\$4 (Dinomites)

Bookings essential:

tel: (09) 309 0443 ext 804 during office hours. (Confirmed with payment).

Flight! Insects, Birds, Bats

July School Holidays at Weird & Wonderful

5 – 20 July, 10am-12 noon & 2pm – 4pm daily (Each activity takes about 10 minutes.)

Monday

Flapping Dragonfly! Colour, fold and spin!

Tuesday

Mahia he manu! Practice Maori art!

Wednesday

Flight Faces! Get a bird, bat, or insect painted on your cheek!

Thursday

Flying seed Helicopter! Make and drop!

Friday

Build a Bird Feeder! Hang it in your garden and watch who visits!

Saturday

Flapping Dragonfly! Colour, fold and spin!

Sunday

Badges are back! Design your own, or decorate one of ours!

There is a small charge for each activity. Parents! Children must be accompanied by an adult in Weird & Wonderful.

Members' Private viewing of Fletcher Challenge Ceramics Award and Bendon's Next to Nothing Exhibition

Sunday, 11 May, 5.30pm – 7.30pm

(entry by West Door)

Fletcher Challenge Ceramics Award

Enjoy a relaxed viewing of this exhibition of pieces selected for consideration in one of the three major ceramics awards in the world. Featuring works from 46 countries and including a strong New Zealand presence coupled with recent works from 18 previous stars of the show, this year's **Fletcher Challenge Ceramics Award** is one of the best in the exhibition's 21-year history.

Bendon's Next to Nothing exhibition

Celebrate Mothers' Day with a visit to this light-hearted look at Auckland Museum's exquisite undergarment collection as worn by mothers and others throughout this century.

Members free to both these exhibitions, guests will be charged admission.

Members' Trip to Goat Island Marine Reserve

Saturday, 24 May

Rescheduled from October 1996.

Let's hope we have better weather this time!

Led by Dr John Walsby, well known natural historian, author, Nature Watch columnist for the New Zealand Herald, and feature writer for New Zealand Geographic. A resident of Leigh, Dr Walsby will lead us on a coastal walk featuring fine examples of coastal plants and broad leaf forest, including a magnificent kauri grove. At low tide we will also explore the geology of the area, relating the great variety of rock types to corresponding shore life evident in fossilised and living form. Some free time will be available in the afternoon to explore on your own, have a swim or go snorkelling. Please wear sturdy walking shoes. Bring a raincoat and a picnic lunch.

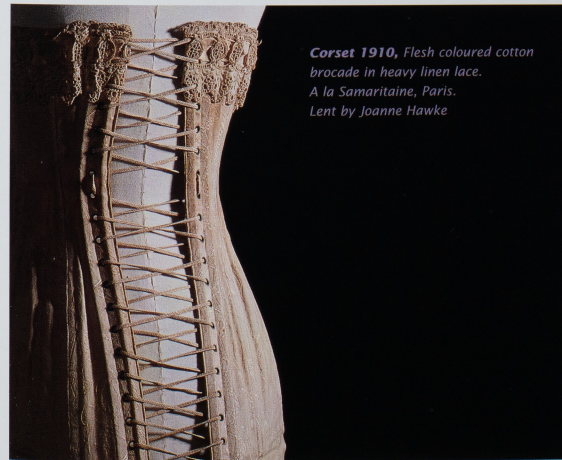
Ride with us (depart at 8:00am from the Museum, returning at approx. 6:00pm)

Members \$25, Non-Members \$45

Drive Yourself (be at the Marine Reserve by 9.30am)

Members \$10, Non-Members \$20

Please book by phoning Noela Gibbons, 306 7044 by May 9. SPACE IS LIMITED



Corset 1910, Flesh coloured cotton brocade in heavy linen lace. A la Samaritaine, Paris. Lent by Joanne Hawke

Fashionable Day Out

Wednesday, 28 May, 10am – 2pm

Join us as we enjoy a guided tour of the **Next to Nothing** exhibition at the Museum then shuttle bus to the Art Gallery. We will have lunch and continue with a guided tour of the **Couture to Chaos** exhibition there before being delivered back to the Museum.

Members \$10, guests \$15, plus lunch at own expense (table reserved at Gallery Cafe)

Phone Noela Gibbons, 306 7044 by 14 May to confirm

Chamber Music at the Casino

Sunday, 8 June, 2pm

Sky City Theatre, cnr Hobson & Wellesey Streets

Spend what in all likelihood will be a wet Sunday afternoon enjoying the superb music of the **Canterbury Trio**. These internationally acclaimed musicians have played together since 1992. Now all faculty members of the Music School at Canterbury University, Deirdre Irons (piano), Jan Tawroszewicz (violin) and Alexander Ivashkin (cello) are originally from Canada, Poland and Russia respectively. Performing in Auckland this year as part of Auckland Chamber Music's regular Winter Series, they will present Schubert's Complete Music for Piano Trio at this afternoon concert.

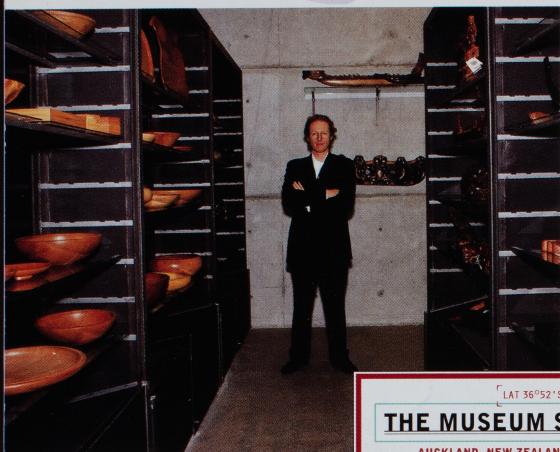
\$25 per person includes concert programme and coffee at interval. Special parking rate applies in Casino carpark with concert ticket.

For reservations phone Noela Gibbons, 306 7044, by 30 May

Scars on the Heart Lecture Series

Members should keep an eye out for details of a lecture series in conjunction with Scars on the Heart and the Armoury. The programme is currently being finalised and is tentatively scheduled for July/August.

New Store Manager brings quality cultural shopping to Auckland



"The new Museum Store will be a window to the arts and crafts of the people of the South Pacific and provide Auckland with quality heritage shopping for tourists, corporates and those looking for that gift with a difference" enthuses Retail Manager Tim Lichtenstein.

Lichtenstein, who is well known to the local design community through his Newmarket Design Design store, is committed to promoting the work of leading New Zealand craft artists.

Recent work by artists working in wood, jade, glass, ceramics and metal is showcased against Noel Lane Architects' dramatic backdrop of concrete, metal and glass which is integral to the refurbishment design scheme. Lighting will also be used for impact.

Visitors are able to browse through the wide range of titles in the new book department located within the store. In time, this will become a national retail resource for specialist publications on topics to include: Ethnology, Natural History, Colonial History, Military & Aviation History, Architecture, Applied Arts and Design.

Scars on the Heart

The 'Scars on the Heart' book continues to enjoy positive comment by reviewers from around the country and is a must for the family bookshelf. Fully illustrated, this major publication offers a fascinating incite into two centuries of New Zealand at war by five history commentators.

Buddy Mikaere tells the Maori story of the New Zealand Wars and the impact this had – and is still having – on Maori communities. Auckland Museum's Nigel Prickett contrasts this with the European perceptions. Laurie

Barber examines New Zealand's first experience of fighting for the Empire in the Anglo-Boer War and Chris Pugsley continues this story into the First World War. Twenty-one years later New Zealand was at war again in the Second World War and Chris Pugsley discusses New Zealand's involvement in Europe, Africa and the Pacific. Rose Young, also from Auckland Museum, considers the Home Front. Finally, Chris Pugsley, takes the story of conflict into the post-war years and New Zealand's involvement with peace-keeping activities abroad today.

Just \$ 62.95 for members at the Museum Store.

Welcome to New Membership Programme Manager

We extend a warm welcome to Noela Gibbons, the museum's new Membership Programme Manager. Noela is well known to the local music community having worked as Development Co-ordinator with the Auckland Philharmonia Orchestra for the past two years. Prior to that, Noela had co-ordinated chamber music concerts around Auckland for four years. Noela comes from a community work and adult training background. She lives in Northcote with her husband and son.



For Your Information

Auckland Institute and Museum

Private Bag 92018
Auckland
New Zealand

Telephone 09 309 0443
InfoLine 09 306 7067
Facsimile 09 379 9956

Director Dr T L Rodney Wilson

Hours 10 am to 5 pm daily

Open every day except Good Friday and Christmas Day.

Admission is free.

Charges for Special exhibitions may apply.

Donations welcome.

Free guided tours are available for groups on most days.

For information on Membership ring 306 7044

For information on exhibitions, public programmes or events ring the InfoLine: 09 306 7067



Auckland Museum
Te Papa Whakahihi