



NEWS

Number 53 April 1993

ISSN 0111-2252

Exhibitions

REFLECTIONS

New Zealand Women's Lives Presented through the Collections of Auckland Museum

Auckland Museum is celebrating the centennial of women's suffrage with a fascinating exhibition of the lives of 25 women from their collections.

Entitled 'Reflections-New Zealand Women's Lives Presented through the Collections of Auckland Museum', the exhibition opens from March 20 to May 9th, with free admission.

Many of the women's lives represented through the exhibition have already been acknowledged, such as Jean Batten and Kate Sheppard. Others are being rescued from relative anonymity. In selecting the women an attempt has been made to present a cross-section of the Museum's collections as well as to illustrate some of the diversity amongst the women represented.

A variety of crafts are included, ranging from traditional women's work, such as weaving and needlework, to activities more frequently associated with men, such as glass casting.

The selection also reflects New Zealand's cultural diversity from the 1840s through to the present day as represented through the collections.

Some of the women have fulfilled traditional roles; others have actively worked to bring about changes in society; still others have contributed to change quietly through their own example. Their achievements are being enjoyed by women today.

Their experiences also reflect a larger historical canvas -missionary activities in the 1840s-50s; the New Zealand campaigns of the 1860s; the

development of craft education; changing ways of making a living; the suffrage campaign of the 1890s; New Zealand's involvement in two World Wars; the development of aviation and society's changing attitudes to women.

More subtly, the collections and the women's stories tell something of the changes in women's lives over this period as well as reminding us of continuity and the endurance of tradition.

'Reflections' launches a series of special events, demonstrations, lectures and videos to be held at Auckland Museum throughout the year, in celebration of the centennial of women's suffrage. These events and the exhibition are described further in the enclosed brochure. ■



Photo: Dame Catherine Tizard, Governor General of N.Z., views the collections after she had officially opened the exhibition at a launch on March 19.

REFLECTIONS Members Open Evening

Thursday, 22 April
6.00-8.30pm

Members, their families and friends are invited to a Members Open Evening and viewing of the special exhibition. Weaving, embroidery and tivaivai demonstrations will take place and a chamber group will provide music.

A number of staff involved in the development of the exhibition will be on hand to answer your enquires. Refreshments will be available.

Please come and help us celebrate.
Entry: West Door.



Treasures & Visions

The **'Treasures and Visions'** exhibition, held in the Museum's Special Exhibition Hall from mid-December 1992 to mid-March 1993, was designed to introduce the concept of the Museum's development project to the public - showing where the Museum has come from and where it is going, as we head towards the 21st century.

There were two aspects to the exhibition - a display of exhibits rarely seen before ('Treasures') and displays giving a taste of possible future development of the Museum and its exhibits ('Visions').

To cater for younger visitors, a Children's Science Discovery Centre with the theme **'Skeletons from our Cupboards'** was included offering a range of interactive and hands-on activities, as well as school holiday fun activities. The centre attracted over 30,000 visitors over the holiday period and another 1,500 school students during February and March.

Public and media response to the exhibition has been positive and encouraging, conveying the message that the Museum's future focus is forward-thinking and progressive. Visitor numbers increased by about 10,000 in January alone, attributed to the attraction of the exhibition.

A popular and successful exhibition, **'Treasures and Visions'** will be a valuable blueprint for the Museum's future. ■

Summary of Market Research Results

MRL Research Group conducted face-to-face interviews with 688 members of the general public (aged from 10 to 60 years and over) during the exhibition.

A summary of responses shows that:

- **The 'Treasures' were the most interesting exhibit due to their historical significance, variety and contrast**

- **The Virtual Reality was the second most interesting exhibit due its hand-on, interactive aspect, its uniqueness and a liking for computers**

- **Visitors were keen on seeing 'behind the scenes' work being done**

- **Children are the most likely group to visit frequently to see/use interactives**

- **The Museum development plans were rated 'very good' or 'quite good' by 68% of those who saw them**

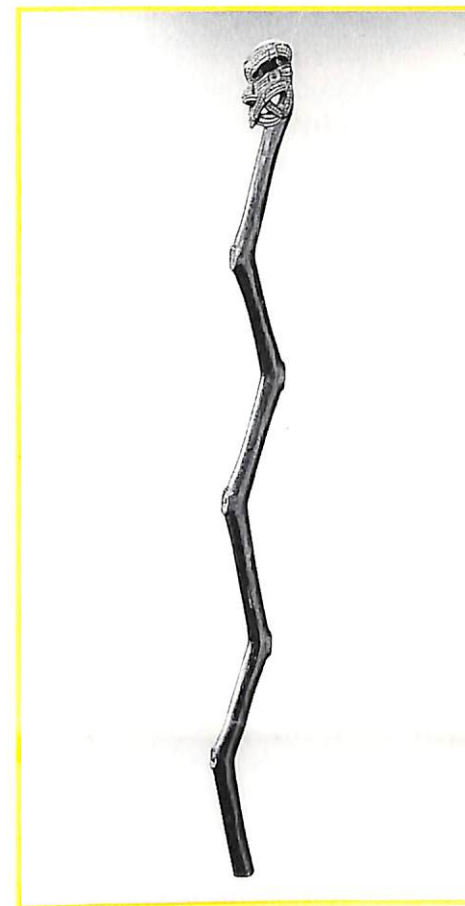


Photo: Up to 250 parents and children an hour visited the Children's Science Discovery Centre over the school holidays.

New Accessions

Toko wananga, Staff for House of Learning

This staff was recently purchased by Auckland Museum in London, where it had been found in an old house. Nothing is known about its early history or how it was taken to England.



It is a very rare type of Maori artefact which is believed to be a toko wananga, a staff set up in front of the Maori house of learning. Staffs of different shapes, some straight, some wavy and some zig-zag, were selected to symbolise the presiding atua (departmental god) of the time, to indicate what subjects were being taught.

The carving style of this staff suggests that it came from the East Coast of the North Island sometime in the early 19th century.

The only other comparative artefacts are a set of six such staffs found in a hollow tree at Mauku, South Auckland, sometime before 1893. These are also held in Auckland Museum as part of the Sir George Grey collection. John White reported that these staffs were used to

represent separate named gods, but other authorities such as Sir George Grey, Elsdon Best and Te Rangihira were sceptical. However, the re-discovery of this distinctive staff in London and various oral histories retained by Maori elders tend to support the interpretation that this represents a particular god. ■

Roger Neich

Council News

Museum Council Membership

At the last Annual General Meeting held on 23 November 1992, Harold Coop assumed the mantle of the President of the Auckland Institute and Museum and Garry Law became Vice-President; Bill Laxon is now the Past President. Dick Bellamy, Shirley Bollard, Jack Grant-Mackie, Bruce Hayward and Sheila Weight were elected to serve as Members' representatives for the next three years.

Allan Berry and Joan Robb did not offer themselves for re-election, and Peggy Phillips was not re-elected. The Council has already expressed to them its appreciation of their service to the Museum. Mr Berry has been both Education Officer and Council member; Miss Robb was a member of the Council for over 15 years; and Mrs Phillips was both a local authority representative and a Members' representative on the Council since 1981. We add our thanks, on behalf of the Members.

Following the local authority elections in October, there has been a considerable number of changes in the local authority representation on the Council. The representatives are:

Auckland City Council: Doug Astley, Ken Graham, Juliet Yates

Franklin District Council: Michael Barnett

Manukau City Council: Peter Carter, Meryl McKenzie, Ewing Stevens

North Shore City Council: Bryan Easte, Paul Titchener

Papakura District Council: Vivienne Pollock

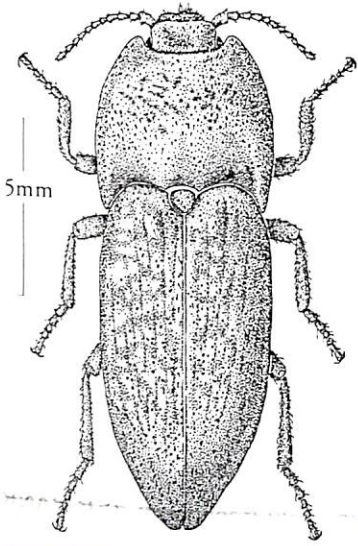
Rodney District Council: Eddy Bolton

Waitakere City Council: Yvonne Copland, Russell Jackson

Peter Carter, Yvonne Copland, Ewing Stevens, Ken Graham and Paul Titchener were previously on the Council. Former Council members Gael Collins, Suzanne Corbett, George Costello, Emma Davis, Bill Kirk, Sandra Lee, Ron McQuoid, and George Thew are no longer members of the Council; we are grateful to them for their work for the Museum.

Memorable Beetle Search in Chatham Islands

Features



Jumping from cray boats to the rocky shores of the Chatham Islands in search of rare beetles for three weeks on end, is probably not everyone's idea of fun. However, late last year, Entomology Curator John Early and three entomologists from Lincoln University, did just that.

They were searching for three species of beetles considered sufficiently rare to be legally protected under the Wildlife Act - the Pitt Island longhorn (*Xylotoles costatus*); the Chatham Island click beetle (*Amychus candezei*) and the coxella weevil (*Hadramphus spinipennis*).

The aims were to find the 3 species; to ascertain their distribution; to identify threats to their survival and to recommend methods for monitoring them in the future. The work was funded by a Department of Conservation research grant to John Early in 1991.

The most elusive of the trio was the Pitt Island Longhorn beetle. All the usual trapping techniques failed and fears were held that it may be extinct until a single specimen was found on a tree trunk on the last night on South East Island.

Searching for the click beetle after dark was an exciting experience. The forest comes alive at night with thousands of wetas emerging from daytime retreats. The forest floor teems with a variety of beetles and cockroaches race up and down tree trunks watched by the beady eyes of huge *Dolomedes* spiders. It was pleasing to find the click beetle on Mangere Island where it was previously unknown but unfortunately the population known to exist in 1967 at Hapupu on Chatham Island has died out.

The coxella weevil is restricted to patches of its host plant, the speargrass *Aciphylla dieffenbachii*. All patches examined on Mangere and South East Island were inhabited by the weevil, so at present its survival is ensured as long as rats are not introduced.

Working and comparing the beetle populations on these beautiful islands with their unique flora and fauna was a memorable experience. Other groups of insect fauna were also surveyed, using various trapping methods not previously used on the Chathams. They produced about 2,000 insect specimens to be added to the Museum's collection which will complement material collected by E.G. Turbott in 1937. ■

Northern Luminary Sheds Light on Life in Bay of Islands

The *Northern Luminary* was founded in the Bay of Islands in 1879 by journalist Francis Mackenzie. True to the name he had chosen for his newspaper, for over 30 years, through his weekly columns, Mackenzie shed abundant light on the complex life and industry of that large, bustling community.

A complete file of the paper unfortunately has not survived but the Museum Library's set is the most extensive available in the country (1879 - c. 1900). Up to now, historians and researchers were disappointed in their efforts to use the papers, as the already fragile papers would crumble like confetti with even the gentlest handling.

The recent decision to microfilm the Luminary will be welcome news. A Wellington company, New Zealand Micrographic Services, was selected to take charge of this important project. The paper has been crated down to the Company's offices where tissue repair, prior to filming, is now under way. Filming should be completed by the end of April.

Like a diary kept by a coal miner, miller, farmer, fisherman or prospector, the pages of the Luminary will add to the Library's already rich stock of primary resource material for the northern region of New Zealand, in the latter part of the 19th century. ■

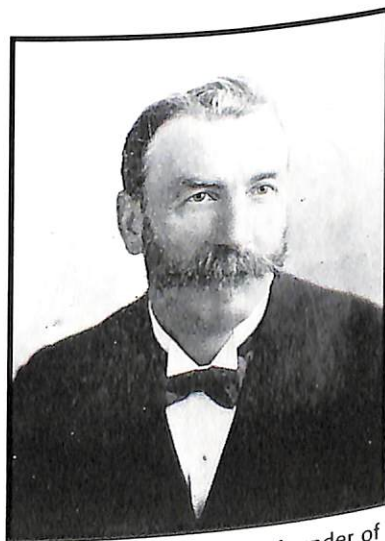
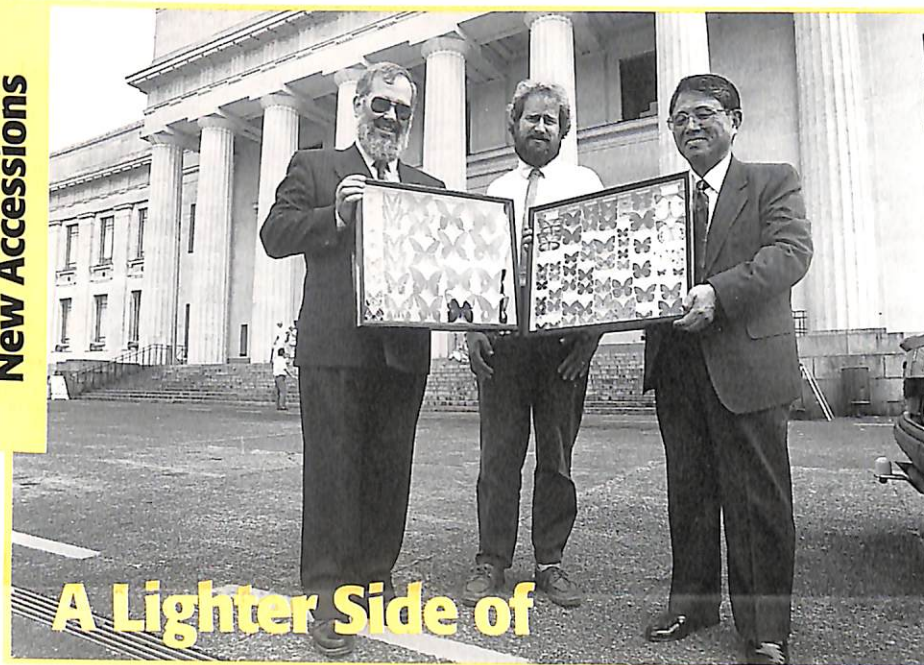


Photo: Francis Mackenzie, founder of the *Northern Luminary*.

New Accessions



A Lighter Side of Japanese Business

Few businesspeople have demonstrated the same combination of love of nature and business as that shown by Mr T. Izawa, President of Mitsui O.S.K. Kogyo Kaisha, Tokyo. Mr Izawa is a prominent member of the Lepidopterological Society of Japan and his private collection is the third largest collection of butterflies in Japan.

Since early 1992, Mr Izawa has been involved with New Zealand through his company's business interests and during that time he has made several notable contributions to the entomology collection of the Auckland Museum. His first visit to inspect the Museum's butterfly collections showed that whereas other parts of the Asia-Pacific region were well represented, there were very few Japanese specimens.

Over the following year and assisted by fellow Japanese butterfly enthusiasts, Mr Izawa assembled 6 display boxes containing 161 of the total of approximately 200 species found in Japan. The first two boxes arrived in June 1992; two more followed in October and the final two were presented personally by Mr Izawa in February 1993.

The butterflies are a valuable addition to the Museum's reference collection of foreign insects and can be examined by anyone with an interest in butterflies. It is Mr Izawa's expressed hope that they will stimulate others to study butterflies and to add further to the collection. The Museum is very grateful to Mr Izawa for his generous donation. ■

Photo: Mr Izawa presenting the last two cases of Japanese butterflies to Director Stuart Park and Entomologist John Early.

Staff News

A warm welcome is extended to the following new staff:

Karen McKay joined the School Education staff at the beginning of Term I. She was previously employed as an Education Officer at Auckland Zoo, where she gained valuable experience teaching visiting school groups of all ages.

Kathy Knott joined the Museum in January in the newly-created role of Public Relations Manager, having previously been with ASB BANK for five years as head of their Events Marketing/Sponsorship department.

Jenny Curnow was appointed in January to a part-time contract position in the Library, cataloguing original manuscripts collections. She previously worked as a Research Assistant at the Archive of Maori and Pacific Music, University of Auckland.

Lynne Curry was appointed in November as a part-time records administrator working from the Finance and Administration Department. Previously she was Information Officer at the Tobacco Institute of N.Z.

Dr Hugh Grenfell is working as a Research Assistant in a temporary Foundation for Research, Science and Technology funded position for the Marine Invertebrates Department. A micropaleontology graduate, Hugh was previously employed by Waikato University.

Raewyn Glaister has joined the Applied Arts Department as a temporary technician until June.

Katherine Fry is working as the attendant for the "Reflections" exhibition until May.

Janet Brady is being employed two afternoons per week in the Land Vertebrates Department to clean and stabilise moa bones, a project funded by a Lottery Board grant.

Notices

The 'Duchess' Stands Corrected

Our thanks to a relative of William and Mary Culpán, emigrants on board the *Jane Gifford* during her appalling journey to New Zealand in 1842 (see our story "Has the 'Duchess' Arrived?" in the November 1992 **Museum News**). Lola Gregory (nee Culpán) points out that her great great grandparents were in fact the oldest passengers on the ships, William being aged about 56. The error probably occurred when whoever was listing the 'Jane Gifford' passengers was confused over there being two William Culpáns, father and son.

Volunteering at Auckland Museum

The Museum's Community Education Officer is eager to hear from any member willing to be involved as a volunteer at the Auckland Museum. There is a particular need for helpers who have basic office and administration skills (word processing skills are an added bonus). The work is varied, interesting and worthwhile. Please contact Katrina Stamp ph: 309-0443 extn 878.

Ongoing Programmes and Demonstrations

from April 4 to December 5

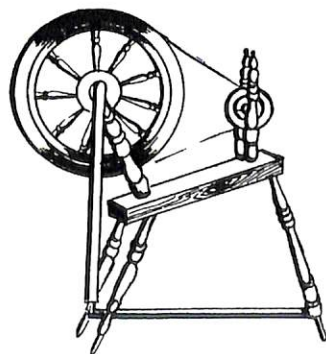
Music In the Museum

We welcome back to the Auckland Museum our regular **Music In the Museum** Series given by students from Auckland University School of Music. The concerts will be held on the first Sunday of every month at 12noon in the Furniture Hall. Members and the public have the opportunity to come along and listen to some talented young New Zealand musicians, free of charge.



Spinning In the Museum

The Auckland Handweavers and Spinners Guild Members will give demonstrations in the Main Foyer on the first Sunday and third Wednesday of every month from 1pm -3pm. The spinners are popular with both local and overseas visitors. We welcome them back to the Museum.



Fletcher Challenge Ceramics Awards

Members Open Evening

Thursday, 10 June

6.00-8.00pm

A special opening for Museum Members to enjoy a leisurely and relaxed evening at the Museum. This is your opportunity for free viewing of the Fletcher Challenge Ceramics Awards exhibition and to take part in special tours given by Auckland Studio Potters. There will also be musicians playing for your enjoyment and refreshments will be available.

Entry: West Door

Pottery Demonstrations

Sunday 6 and Sunday 13 June
1.00-3.30pm

Pottery demonstrations by Auckland Studio Potters will take place in the Main Foyer.

Special Pottery Class for Children

Saturday, 12 June
1.30 -3.30pm

Children are invited to look at ceramics in the Museum and then make their own 'winning' piece to be placed on display. A special workshop to be run in association with Auckland Studio Potters.

Bookings are essential, as space is limited to 25 participants.

Please contact Katrina Stamp ph 309 0443.

Cost: \$6.00

Auckland War Memorial Museum was erected in the Auckland Domain in 1929 and extended in 1960 as the Memorial to those from Auckland Province who died in the two World Wars. It is administered by the Auckland Institute and Museum, whose origins go back to the first Auckland Museum of 1852. Auckland Museum News is issued free to members of the Institute and Museum, a group of friends and supporters of the Museum. **Auckland Institute and Museum, Private Bag 92018, Auckland, Phone 0-9-309 0443.**

FIELD TRIPS

THE ARCHAEOLOGICAL SITES OF HOWICK AND BEYOND.

Leaders: Nigel Prickett - Auckland Museum
Brenda Sewell - Department of Conservation.

We will visit the Pa of Musick Point and the old stone working site nearby, the sad remains of Pigeon Mountain, Howick Stockade, Omana (at Maraetai), Galloway Redoubt (Clevedon) and other sites, depending on weather and access. It will be a full day field trip leaving at 9.30am and arriving home by 5.00pm.

Date: Sunday, 18 April

Transport: By bus, departing rear of the Museum at 9.30am prompt.

Cost: \$25.00

To Bring: Own lunch, wet weather gear, sun hat, sun block and suitable footwear.

Booking essential. Please fill in the form below.

MUSEUM FAMILY FIELD TRIP TO CASTOR BAY: "BEACH WALK"

Leader: Margaret Morley

Explore and search a beach together at Castor Bay (North Shore). Try to find the Asian mussel and other interesting creatures.

Date: Sunday, 6 June 1993

Transport: Own transport to Castor Bay. We will meet at 9.30am and leave at approx 3.30pm.

Cost: \$5.00 per family

To Bring: Picnic (optional), gum boots or shoes to wade in, raincoat and sunhat.

Booking essential. Please fill in the form below.

SCIENCE ACTIVITIES FOR CHILDREN

Learn More About the Museum and its Collections.

Meet Geoff Moon, author and photographer.

Title: **New Zealand Birds: a close look at birds that come out at night**

Date: Friday, 14 May

Time: 10.30 - 11.30am

Age: 5 upwards

Venue: Museum School Room

Cost: \$1.00

Come and meet Ewen Cameron, Curator of Botany.

Title: **More about Seeds: exciting facts and stories about seeds**

Date: Wednesday, 19 May

Time: 10.40 - 11.15am

Venue: Museum School Room

Age: 5 upwards

Cost: \$1.00

Title: **Leaf shapes and what they mean**

Date: Thursday, 20 May

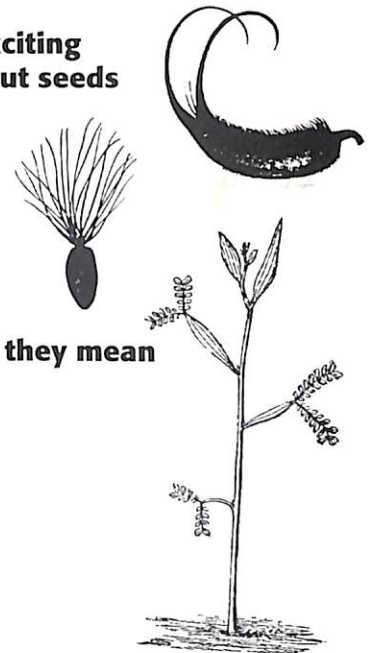
Time: 10.40- 11.15am

Venue: Museum School Room

Age: 5 upwards

Cost: \$1.00

Bookings not required



SCIENCE AT WORK IN AUCKLAND MUSEUM

**1993 SCIENCE AND TECHNOLOGY WEEK,
26 April - 2 May**

During Science and Technology Week, the Auckland Museum will have additional science activities taking place in the main foyer. Members and the public are invited to observe a range of demonstrations given by our own Natural History and Conservation staff, at 10.30am- 12noon and 1.30pm - 3.00pm daily.

Field Trips

Please tick the field trip/s you wish to attend

Name: _____

Address: _____

Phone No: _____

Amount enclosed: _____

Museum Field Trip To The Archaeological Sites Of Howick And Beyond

Date: Sunday, 18 April 1993. Cost: \$25.00

Museum Field Trip To Castor Bay: "Beach Walk"

Date: Sunday, 6 June 1993. Cost \$5.00 per family.

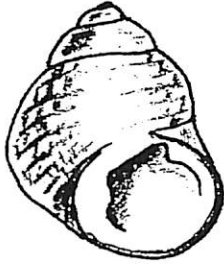
To register for a trip please complete the form and send with your money to: Community Education Officer, AUCKLAND MUSEUM, Private Bag 92018, Auckland. Phone: 309 0443.

AUCKLAND MUSEUM HOLIDAY PROGRAMMES FOR CHILDREN & YOUNG ADULTS

SHELLS FOR BUDDING SCIENTISTS

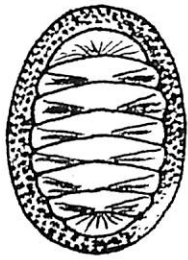
A series of natural history programmes for children.

A simple guide to New Zealand shells and marine biology. Sessions will include 'hands on' activities involving specimen study and related activities.



Sessions are limited to 25 participants and are suitable for young people aged 8 upwards.

Booking in advance with payment is essential. Please fill in the form below.



Time: 1.30 - 3.30pm

Cost: \$5.00 per session

Venue: Museum School Room



Date: Monday, 17 May

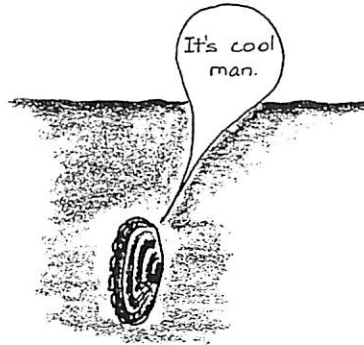
Are There Different Kinds Of Shells?

Find out which are grazers or ... who eats who? You can see them, but can they see you? Slides of other marine life.

Date: Wednesday, 19 May

Where Do Shells Live?

Why stick on a rock or bury in mud? Find out where shells prefer to live.



Date: Thursday, 20 May

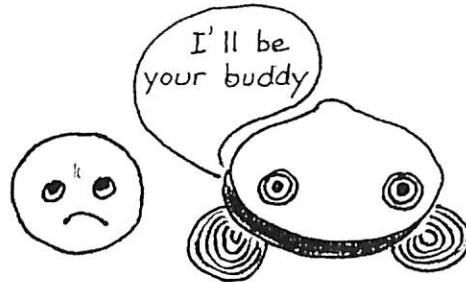
How To Find And Prepare Shells For A Collection

Use a lens and see amazing shells the size of a pinhead under the microscope.

Date: Friday, 21 May

Short Of Friends?

Make your own buddy from shells and plaster or join a team to compose a mural.



Help will be available at every session to name shells you have collected. We will also visit the Museum shell gallery.

FOSSILS - WHAT ARE THEY?

Discover clues hidden in fossils, the oldest fossils and where they are found.

Date: Friday, 14 May

Time: 1.30pm - 3.30pm

Age: 6 upwards

Cost: \$5.00

PHOTOGRAPHY FUN

A simple introduction for children to the world of photography. Participants will have an opportunity to make sunshine prints. Sessions given by the Museum photographer.

Date: Tuesday 11 May, Thursday 13 May

Time: 2.15pm - 3.30pm

Venue: Museum School Room

Age: 8 upwards

Cost: \$5.00

POTTERY FOR CHILDREN

Learn a number of simple clay techniques and take your work home. A special course for children given by members of Auckland Studio Pottery.

Dates: Wednesday 12 May and Tuesday 18 May
(two sessions per day)

Time: Morning Sessions 10.30 - 12.30pm
Afternoon Sessions 1.30 - 3.30pm

Venue: Museum School Room

Age: 5 upwards

Cost: \$5.00

Bookings essential. Please fill in the form below.



Holiday Programmes

Name: _____

Address: _____

Age: _____

Phone No: _____

Amount enclosed: _____

Please tick the course you wish to attend

1. **Shells For Budding Scientists**
 Dates: Monday 17 May Wednesday 19 May Thursday 20 May
 Friday 21 May All Sessions. Cost: \$5.00 per session
2. **Fossils- What are they**
 Date: Friday 14 May. Cost: \$5.00
3. **Pottery for Children**
 Dates: Wednesday 12 May am pm
 Tuesday 18 May am pm. Cost \$5.00
4. **Photography Fun**
 Dates: Tuesday 11 May Thursday 13 May. Cost: \$5.00

To register for a course please complete the form and send with your money to: Community Education Officer, AUCKLAND MUSEUM, Private Bag 92018, Auckland. Phone: 309 0443.



100 years ago, women in New Zealand

achieved the right to vote.

To celebrate this centenary year of women's suffrage in New Zealand, Auckland Museum has focused on a selection of women whose lives and work are represented in the Museum's collections.

We hope that you will enjoy viewing this exhibition as we have enjoyed gathering information about the women and the collections on display. This is Auckland Museum's tribute to those women.

REFLECTIONS
20th March -
9th May 1993



REFLECTIONS

New Zealand Women's Lives Presented through
the Collections of Auckland Museum

The Women in order of birth

1800



Mary Ann Williams, who came to New Zealand willing to "spend and be spent" in the service of God

Franzisca Teutenberg, a German immigrant who made a living as an embroiderer and needleworker

Elizabeth Pulman, New Zealand's earliest professional woman photographer

Kate Sheppard, New Zealand's foremost campaigner for women's suffrage

1850



Makurata Paitini, a weaver of fine cloaks who helped Te Kooti escape to the King Country

Fanny Osborne, watercolour artist and mother of 13 children

Edith Fenton and *Martha Buchanan*, accomplished amateur artists and craftswomen.

Emma Jane Gifford, whose samplers are the only public record of her life

Margaret Matilda White, an early photographer whose work has only recently been brought to public attention

Briar Gardner, early studio potter and accomplished embroiderer

Una Garlick, the first woman photographer to gain entry into the Auckland Photographic Society

Hinerotu Rangī, *Pihotahi Trainer* and *Mihimate Teepa* who used raranga techniques to create a waistcoat for Hinerotu's husband

Pearl Dawson, Auckland's earliest woman veterinarian

1900



Leila Bridgman, YWCA worker, interned in a Japanese prisoner of war camp during World War II

Marini and *Muriel Jackson*, Aucklanders well-known for their nursing careers

Amy Harper, professional portrait photographer
Violet Walrond, who, aged only 15, represented New Zealand in swimming at the 1920 Olympic Games.

Lucy Cranwell Smith, internationally acclaimed botanist

Muriel McIntosh, art and crafts teacher and practitioner

Jean Batten, world-renowned aviator who died in relative obscurity in 1982

Mama Rongo, and her group, who created a 16,600 piece tivaivai for Auckland Museum

Emma Knuckey, fashion designer to Auckland's elite

Puti Rare, of Ngati Maniapoto, whose work continues a family craft tradition

Beatrice Cross, who began designing rugs in the 1940s

Mereia Johnston, tapa maker, who last year created a tapa wedding dress for her daughter

1940



Ann Robinson, well-known contemporary glass artist, developing new techniques in a traditional craft

The Niue Weavers of Auckland, women working together to practise and preserve traditional skills.

Events

Women in New Zealand

This special lecture series to complement the exhibition, explores the lives of specific groups of women in New Zealand.

Date: Tues, 20 April, 1pm
Title: **Le Teine le Au ole Aiga.** (*The girl is the heart of the family*)
Speaker: *Fa'afua Le'avasa Tautolo*, Director of Pacific Islands Resource Centre, Chairperson MASPAC

Date: Wed, 21 April 1pm
Title: **Chinese Women in New Zealand:**
Women In Migration, Changing Roles and Opportunities.
Speaker: *Dr Manying Ip*, Asian Studies Department Auckland University

Date: Thursday, 22 April 1pm
Title: **Jewish Women: Identity and Involvement**
Speaker: *Wendy Ross OBE*, President NZ Jewish Society

Date: Friday, 23 April 1pm
Title: **Tama Wahine**
Speaker: *Rose Pere*
Ao Ako Global Learning

As part of our recognition of ANZAC Day we present the following lecture:
Date: Tuesday, 27 April 1pm
Title: **New Zealand Women in the Boer War**
Speaker: *Sheila Gray*
Researcher

Events

A special Gallery Programme to complement the exhibition.

Demonstrations

Sunday, 21 and 28 March,
1 - 3.30pm

Tivaivai making by
Mekameka Aroa
Leader: Tai Ngaata.

Sunday, 21 and 28 March,
4, 11, 18 and 25th April,
1 - 3.30pm

Embroidery of Samplers by
Auckland Embroiderers
Guild Members

Wednesday, 7 and 14 April,
1 - 3.00 pm

Maori Weaving by Puti
Rare



Wednesday, 21 and 28 April,
1 - 3.00pm

Tapa Cloth Making by
Mereia Johnston



1993 Lecture Series

In recognition of Women's Suffrage Auckland Museum is pleased to present a lecture series given by women. Each lecture will focus on the monthly theme that has been identified by the Suffrage Centennial Trust.

March Theme: Women, Sport and Physical Recreation

Date: Tuesday, 16 March, 1pm
Speaker: Jill Ford, Programme Manager, Hillary Commission
Title: **Beer, Babies and Bras**

April Theme: Women and Education

Date: Thursday, 15 April, 1pm
Speaker: Judith Devaliant, Writer
Title: **Kate Sheppard: Educator**

May Theme: Women and the Land

Date: Tuesday, 4 May, 1pm
Speaker: Nganeko Minhinnick, Ngati Te Ata
Auckland Conservation Board
Title: **Women and the Land**

Date: Tuesday, 11 May, 1pm
Speaker: Joan Wiffen, the Dinosaur Lady of New Zealand
Title: **Dinosaur Hunting in Hawkes Bay**

June Theme: Women and the Environment

Date: Tuesday, 1 June, 1pm
Speaker: Kari Christensen,
Fletcher Challenge Ceramics Award Judge 1993
Title: **A Woman and Her Work**

Date: Tuesday, 15 June, 1pm
Speaker: Carmen Kirkwood, Environmental Manager
Huakina Development Trust
Title: **Kaitiakitanga**



WOMEN'S SUFFRAGE
WHAKATŪ WĀHINE
AOTEAROA • NEW ZEALAND
1893-1993



1993 Lecture Series

July Theme: Women and Safety

Date: Tuesday, 13 July, 1pm
Speaker: Jane Tolerton, Writer
Title: **Ettie Rout and Safe Sex.**
Was she the 'Guardian Angel' or 'Wickedest Woman'?

August Theme: Women and Health

Date: Wednesday, 4 August, 1pm
Speaker: Yvonne Lake, Obstetrics Consultant Middlemore Hospital
Title: To be announced

September Theme: Women, Politics and the Vote

Date: Wednesday, 1 September, 1pm
Speaker: Sonia Davies, MP
Title: **What Have Women Done with the Vote?**

October Theme: Women and the Economy

Date: Tuesday, 5 October, 1pm
Speaker: Angela Foulkes, NZCTU
Title: **Women and the Economy**

November Theme: Women and the Law

Date: Tuesday, 2 November, 1pm
Speaker: Judge Augusta Wallace
Title: **Women and the Law**

December Theme: Vision and the Future

Date: Thursday, 2 December, 1pm
Speaker: Her Excellency Dame Catherine Tizard
Title: **Women: A Vision for the Future.**

Members Open Evening

Members, their families and friends are invited to an open evening and viewing of the special exhibition.

Thurs, 22 April at 6-8:00pm. Weaving, embroidery and tivaivai demonstrations will take place and a chamber group will provide music. A number of staff involved in the development of the exhibition will be on hand to answer your enquiries.

Please come and help us celebrate.

Video Showings

Daily, 20 March - 6 April 1993

10.30 - 11.05am **THE WOMEN'S VOICE**
Explains the role and work of the Ministry of Women's Affairs. Issues raised include health, housing, childcare, the role of Maori women in the community and the economic position of women.

12.30 - 1.00pm **THERE'S ALWAYS A FIRST IN NON-TRADITIONAL WORK**

Interviews a number of young women working in traditionally male areas of work.

2.30 - 3.30pm **THE LIFE AND TIMES OF ROSIE THE RIVETER**

Documents the brief career and sudden eclipse of Rosie the Riveter, a symbol of millions of women who worked in the skilled industrial trades in America during World War II.

Daily, 7 April - 20 April 1993

10.30 - 11.00am **KILLING US SOFTLY**

Examines the image of women presented by advertising, using many examples from magazines and newspapers which reveal that advertising is one of the most powerful forces in our society.

12.30 - 1.00pm **LANDGIRLS**

In 1941 due to a shortage of manpower young women were recruited to work the land. This is their story.

2.30 - 3.30pm **OF SPORT OR JOY OR WOE**

The history of Auckland Girls Grammar School.

Daily, 21 April - 3 May 1993

10.30 - 11.00am **MY ART OF MAORI WEAVING**

Shows the traditional materials and methods used in Maori weaving. Women demonstrate their skill as they work on a piupiu, korowai cloak and taniko border.

12.30-1.00pm **QUILTS IN WOMEN'S LIVES**

A series of portraits of seven quiltmakers who talk about their art and importance to their lives.

2.30 - 3.30pm **WOMEN ON THE MARCH**

A record of the struggle for equal rights for women. From the beginning of the suffrage movement - imprisonment and martyrdom, to winning the right to vote.

Note: Video showings after April 21 are subject to availability.
Enquiries to the Community Education Officer, phone 309 0443