

MUSEUM



WINTER 2005
ISSUE 103

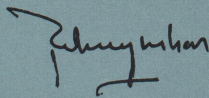
a quarterly guide to exhibitions and events
AT AUCKLAND WAR MEMORIAL MUSEUM



QUARTERLY

director's message

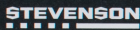
Progress on the construction of the Museum's Stage II works is spectacular at present. The underground car park structure is complete, fit out is underway and landscaping on top will begin soon. It will commence operation in September. The "Grand Atrium" is even more impressive. Floors have been inserted at both basement levels and at ground level. The legs supporting the suspended bowl-shaped building are in place, as is the bowl itself and adjoining structure to the north. The Atrium is on track for completion at the end of 2006. In the recent budget round, Government provided a further \$3.6 million (net of GST) supplementary funding as a partial escalation adjustment to their original grant. We are grateful that the government has recognised the extraordinary escalation in worldwide construction costs and have adjusted their funding in recognition of this. This was very welcome news and has moved the fundraising to within \$3 million of its target. It has been a difficult time to be building, with such strong escalation in construction costs, but progress is excellent and the finished result will be both a startling architectural experience and an addition to a beautiful historic building which is both harmonious and functional.



T. L. Rodney Wilson
Director



PRINCIPLE SPONSORS



RADIO CHAMPION

radionetwork

Auckland War Memorial Museum
Auckland Domain, Parnell
Private Bag 92018, Auckland

Infoline: 09 306 7067
Enquiries: 09 309 0443
www.aucklandmuseum.com

Open 10am - 5pm daily

Admission is by donation.
\$5 is appreciated.
Children, of course, are free.

Charges may apply to special exhibitions.

Library: 09 306 7070 x 687 or x 686
Open Monday - Friday: 1pm-5pm
Museum Store: 09 309 2580
Auckland Museum Institute:
09 306 7070 x 883
Venue hire: 09 306 7056
Services to schools: 09 306 7040

Cover images:
Dinosaurs Alive at Auckland Museum, **Capricorn Colours (2004)** by Sarah Guppy from the *Glass Invitational NZ* exhibition.



news in brief

NEW AT THE MUSEUM SHOP

Celebrate Matariki with this tekoteko (male figure). Hand-carved from New Zealand native totara by Tim Codyre. The tekoteko has full moko, and the arms and legs are decorated with kauponga, a design based on the native ponga. The eyes are fashioned from paua. RRP \$900.

VE DAY COMMEMORATIONS

Sixty years ago on 8 May 1945 at 3pm, the Right Honourable Winston Churchill announced the end of the war with Germany. The day before, the final document of surrender had been signed at General Eisenhower's headquarters in Reims, France.

On Sunday 8 May the Museum held a service and wreath laying ceremony in the *World War II Hall of Memories* to commemorate the sixtieth anniversary of the cessation of World War II in Europe.

Prime Minister Helen Clark told the crowd of over 180, "On VE Day we remember all those who gave so much in the service of New Zealand, and whose own hopes and dreams were subsumed in the interests of our nation and world peace for six years of their lives."

Churchill's announcement did not mean the end of the war for New Zealand, Helen Clark said. The conflict continued in the Pacific until August 15. "Even so, there can be no question about the sense of relief in New Zealand which greeted the news of Germany's surrender," she said. "We suffered 11,625 deaths, the highest ratio of those who were deployed of any Commonwealth country."

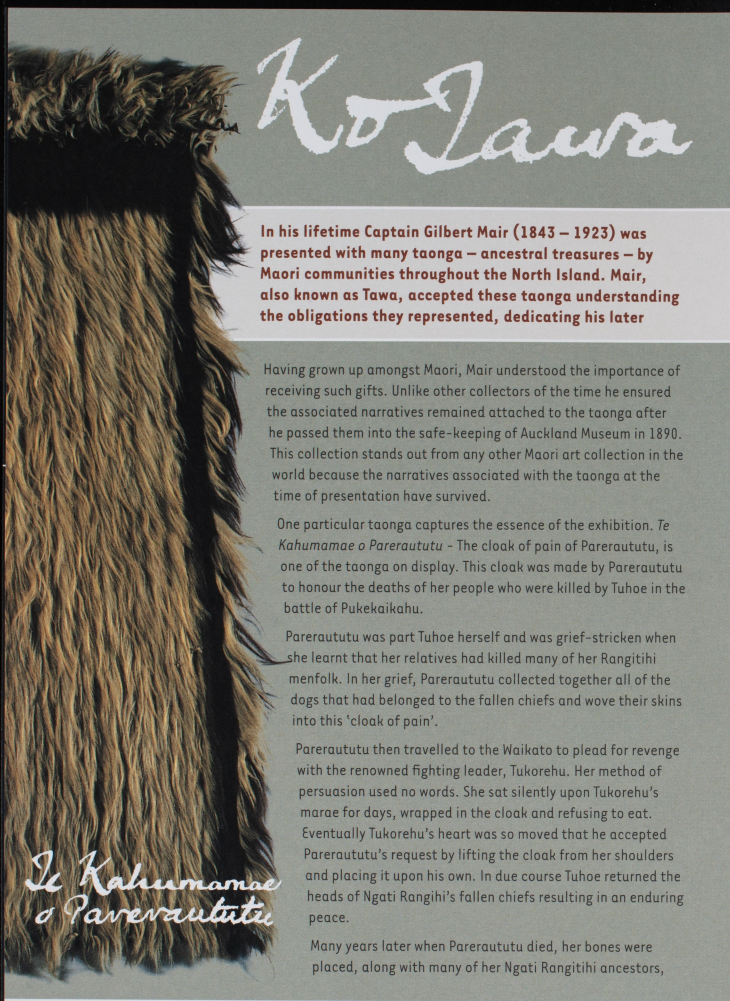
The Saint Celilia Singers performed the Peace Song, as the tri-service Catafalque Party stood motionless around the memorial.

The Prime Minister led the laying of wreaths, placing a large bouquet of fresh roses, irises and carnations at the base of the Memorial.

NEW LOOK MQ!

MQ is getting a face lift as of the next issue. It will still be the same informative and colourful guide to what's on at Auckland Museum, but will also contain more in-depth stories and information on us, our exhibitions and our people.





Ko Tawa

In his lifetime Captain Gilbert Mair (1843 – 1923) was presented with many taonga – ancestral treasures – by Maori communities throughout the North Island. Mair, also known as Tawa, accepted these taonga understanding the obligations they represented, dedicating his later

Having grown up amongst Maori, Mair understood the importance of receiving such gifts. Unlike other collectors of the time he ensured the associated narratives remained attached to the taonga after he passed them into the safe-keeping of Auckland Museum in 1890. This collection stands out from any other Maori art collection in the world because the narratives associated with the taonga at the time of presentation have survived.

One particular taonga captures the essence of the exhibition. *Te Kahumamae o Pareraututu* - The cloak of pain of Pareraututu, is one of the taonga on display. This cloak was made by Pareraututu to honour the deaths of her people who were killed by Tuhoe in the battle of Pukekaiakahu.

Pareraututu was part Tuhoe herself and was grief-stricken when she learnt that her relatives had killed many of her Rangitihī menfolk. In her grief, Pareraututu collected together all of the dogs that had belonged to the fallen chiefs and wove their skins into this 'cloak of pain'.

Pareraututu then travelled to the Waikato to plead for revenge with the renowned fighting leader, Tukorehu. Her method of persuasion used no words. She sat silently upon Tukorehu's marae for days, wrapped in the cloak and refusing to eat. Eventually Tukorehu's heart was so moved that he accepted Pareraututu's request by lifting the cloak from her shoulders and placing it upon his own. In due course Tuhoe returned the heads of Ngati Rangihī's fallen chiefs resulting in an enduring peace.

Many years later when Pareraututu died, her bones were placed, along with many of her Ngati Rangitihī ancestors,

Te Kahumamae o Pareraututu

"This bloodstained weapon belonged to Te Kooti's notorious Bugler, Baker MacLean. I took it from his waist when he fell to my rifle, February 9th 1870, near Kaiariri. He was well named "The Butcher" for he is supposed to have slain in cold blood, at least 70 prisoners – men and women and children. With one blow of his patiti he would cleave the hapless victim's skull and Jimoti Te Kaka, Tahu or Horotiu Te Waru would then savagely mutilate the bodies in accordance with Te Kooti's order - hack their bodies in pieces and cast them to be food for the fowls of the air."



Te Hunga

EXTRACT FROM THE JOURNAL OF CAPTAIN GILBERT MAIR

TAONGA FROM OUR ANCESTRAL LANDSCAPES

From the collection of Captain Gilbert Mair

UNTIL 28 AUGUST 2005

life to assisting Maori to overcome the effects of colonisation. *Ko Tawa* celebrates the taonga passed into Mair's keeping, which today forms an integral part of Auckland Museum's Maori Collection, and is at the heart of the Museum's Matariki celebrations.

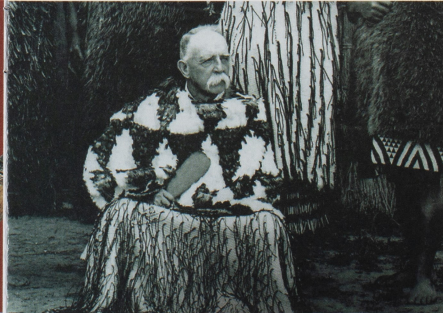
upon Wahanga. On 10 June 1886 the Tarawera eruption scattered their remains to the four winds. *Te Kahumamae o Pareraututu* – the Cloak of Pain of Pareraututu – is their memorial.

The narrative of *Te Kahumamae o Pareraututu* was preserved by Gilbert Mair, who received her while on Crown business in 1875.

Another taonga tells the story of Tutanekei and Hinemoa. *Murirangaranga* (Ngati Tutanekei, Ngati Whakaeu) is a koauau (flute) made from human bone and named after the priest from whom it was made. This was the flute Tutanekei played from Mokoia Island to guide Hinemoa to him. *Murirangaranga* was presented with great ceremony to Mair by Ngahuruhuru Pango on Te Papa-i-Ouru marae, Ohinemutu on about 10 July 1870 as thanks for saving Ngati Whakaeu from invasion.

The exhibition is curated by Dr Paul Tapsell, Tumuaki (Director Maori) of Auckland Museum. Dr Tapsell is recognised internationally as an expert on the Mair collection and will be releasing his book *Ko Tawa* later in the year.

Ko Tawa exhibits a selection of 28 taonga selected from Mair's collection of over 230, each with a unique story to tell, intimately linking today's descendants to ancestral landscapes as remembered, treasured and then presented by their nineteenth century elders. Guides are available daily in the gallery to share the stories of the taonga and their landscapes.



KO TAWA AND MATARIKI PUBLIC PROGRAMMES

Matariki Decorations

UNTIL WEDNESDAY 6 JULY
Matariki facts, decorations and traditional Maori music in the Stevenson Discovery Centre. All day during weekends. Treasures & Tales.

Matariki Colouring Competition

UNTIL WEDNESDAY 6 JULY
Pick up a colouring competition from the Info Desk to win a cool Matariki wall-chart from Reed Publishing. Info available at Front Desk.

Star Mobiles 10 minute activity

SUNDAY 3 JULY, 10AM-12PM
Make a star mobile. Stevenson Discovery Centre: Treasures & Tales. \$2, (\$1 Dinomites)

Constellation Decorations

10 minute activity
SUNDAY 3 JULY, 1.30-3PM
Colour a clear Matariki constellation to catch the light from your window. Stevenson Discovery Centre: Treasures & Tales. \$2, (\$1 Dinomites)

Members' Monday

MONDAY 25 JULY, 2-3PM
A special gallery tour for members led by Museum educator, Kipa Rangihuea.

Lecture: *Ko Tawa* – Sharing

Breath Dr Paul Tapsell
WEDNESDAY 27 JULY, 7.30PM

The curator of the *Ko Tawa* exhibition and Tumuaki (Director Maori) of Auckland Museum, Dr Paul Tapsell presents insights into the extraordinary Gilbert Mair collection and its continuing importance in the telling of the history of the Central North Island. Auckland Museum Institute Members \$5, Non-members \$10. APEC Room.

DINOSAURS alive!

COME ALONG TO AUCKLAND MUSEUM THIS WINTER & MEET OUR BRAND NEW TREASURE, OUR DINOSAUR!

In a world first, the female dryosaur recently captured in Auckland Domain has come to live in the Museum. Here she will receive ongoing expert care and maintenance under the watchful eye of our in-house palaeontologist.

Visitors to the Museum now have the special opportunity to get up-close-and-personal with our beautiful dinosaur in an experience unlike any other!

Come along and see for yourself how Auckland's new pet is settling in. Every show is bound to be different as she explores the Museum and makes new discoveries. And don't worry, dryosaurs are herbivores so prefer to munch on plants and trees - they don't like the taste of children!

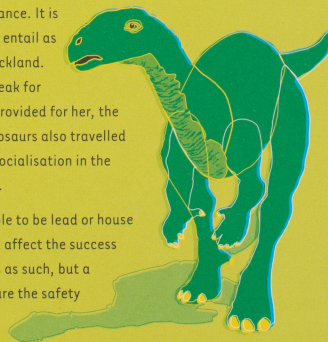
Performances will take place in the Origins Gallery every day during school holidays and every Saturday from 9 July at 11.30am, 12.30pm and 2pm. \$4 per child (FREE for Stevenson Dinomite Members and Museum Family Members - you can join on the day!) Tickets will be available one hour in advance of each show.

STEVENSON DINOMITES PAGE: About our Dryosaur

The dryosaur lived in the late Jurassic period, about 156-145 million years ago, so the possession of a live specimen has propelled the palaeontology community into an uproar. The herbivorous dinosaur will, undoubtedly, take some time to find her feet in the modern world, and, indeed in a museum, but it has been decided that the Museum staff and resident experts are the most qualified to care for and to study her.

She is three metres long, five feet tall at the hips, and weighs about 90 kilos. She is a fast bipedal runner (to escape predators) with a large stiffened tail for balance. It is unknown at this stage what her new exercise regime will entail as it is unlikely that predators will present a problem in Auckland. She also has self-sharpening cheek teeth and a horny beak for grinding up plant material. As most of her food will be provided for her, the Museum may need to seek specialist dental advice. Dryosaurs also travelled in herds and it is anticipated that providing adequate socialisation in the absence of a group of peers will prove most challenging.

At this point it is unknown whether the animal will be able to be lead or house trained, but efforts will be made with both as this could affect the success of public showing. The dinosaur will not be taught tricks as such, but a measure of behavioural training will be required to ensure the safety of the public, and ease of handling by staff.



JULY SCHOOL HOLIDAY PROGRAMME:

The Big Dinosaur Parade

FRIDAY 15 JULY, 10AM
TREASURES & TALES

Come dressed as your own dinosaur creation. You'll be judged for your costume, your dino knowledge, your creative name and much more! Call 09 306 7077 for an information pack and to register. Great prizes up for grabs!

Dinosaur Neighbours Talk

WEDNESDAY 20 JULY, 10.15AM
ORIGINS GALLERY

Virgil Everts will show you the plants and animals that shared Gondwana with those terrible lizards!

Walking with Dinosaurs

SCREENINGS OF THE BBC DOCUMENTARY WILL BE SHOWN ON TUESDAYS AND THURSDAYS AT 3PM. APEC ROOM.

Design a Dinosaur competition

Draw! Paint! Sculpt! Decorate! Do whatever you have to do to design your own original dinosaur that will knock our socks off. Entry size has to be on A4 paper (or similar size sculpture). Send or bring to us by Monday 1 August to be in to win some fantastic dinosaur prizes.

WORKSHOPS:

Bookings essential. Please phone 09 306 7040. Places are confirmed with payment.

Skins, Feathers or Scales

WEDNESDAY 13 JULY, 10.30AM-12.30PM
ADVANCED WORKSHOP (AGED 10 TO 13 YEARS) \$10 OR \$7.50 FOR DINOMITES.

Design a dinosaur skin and paint our Heidi & Wonderful dinosaurs. See your work permanently in use in W&W and learn about dinosaur adornment and camouflage. Bring your own dinosaur model to paint!

Secret Stash Dino Eggs

THURSDAY 14 JULY, 11AM - 12PM
JUNIOR WORKSHOP (AGED 4 TO 6 YEARS)
\$7 OR \$5 FOR DINOMITES.

Make a cool resealable dinosaur egg so you can hatch your dinosaur again and again, and have a secret place to hide your treasures!

Dinosaur Detective

THURSDAY 14 JULY, 10.30AM - 12PM
OR 1.30PM - 3PM / SENIOR WORKSHOP
(AGED 7 TO 10 YEARS) \$10 OR \$6 FOR
STEVENSON DINOMITES.

Find out what dinosaurs we had in New Zealand in these cool activities, and take away your own fossil!

STEVENSON DISCOVERY CENTRE 10-MINUTE ACTIVITIES:

16 APRIL - 1 MAY 2005
\$2 OR \$1 FOR STEVENSON DINOMITES.
Daily in the Discovery Centres.
No need to book, just pop on in.

Mondays & Fridays

10AM - 12PM: Tyrannosaurus Masks
1.30PM - 3PM: Dino Fridge Magnets

Tuesdays & Saturdays

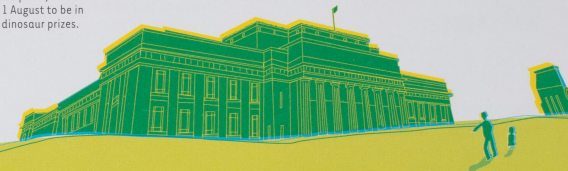
10AM - 12PM: Pegasusaurus
1.30PM - 3PM: Beautiful Bracelets

Wednesdays

10AM - 12PM &
1.30PM - 3PM: Dino Badges

Thursdays & Sundays

10AM - 12PM: Trilobites
1.30PM - 3PM: Wrapsaurus



There were lots of different kinds of dinosaurs that lived at different times. Some were HUGE, some were small. Some walked on two legs, some walked on four. Some were speedy, and some were slow and lumbering. Some were carnivores, and some were herbivores. Some were armour-plated, and some had thick bumpy skin. Some had horns, and some even had feathers.

DID YOU EAT DINOSAUR FOR DINNER LAST NIGHT?

According to many scientists, if you ate turkey or chicken for dinner last night, you ate dinosaur!

Or rather - you ate a dinosaur's descendent. The discovery of the archaopteryx in the 1800s made scientists think there might be a connection between dinosaurs and birds. Today, the scientists who think there is such a connection say that dinosaurs evolved from earlier reptiles, and birds evolved from dinosaurs.

Even though the possible link between dinosaurs and birds has been studied by scientists for years, many people have never heard about it.

DINOSAUR COMPETITION

Answer the question and go in the draw to win the cool book, 'How to keep dinosaurs' by Robert Mash. A fun guide to the joys and challenges of dinosaur-keeping - which we at the Museum know all about with our new family member! **What kind of dinosaur is the Museum's new dinosaur?** Send your answer, along with your name, age, address and contact phone number to: Dinosaur Competition, Auckland Museum, Private Bag 92018, Auckland. Competition closes on 30 September 2005.

DINOSAUR FACTS

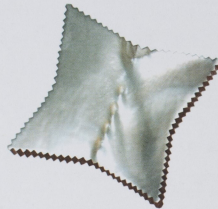
Dinosaurs were reptiles. Reptiles are animals that are mostly scaly, cold-blooded and lay eggs.

While some dinosaurs were carnivores (meat-eaters) and omnivores (both plants and meat-eaters), most dinosaurs were herbivores (plant-eaters).

The smallest dinosaur that ever lived was called **Compsognathus** who lived in the Jurassic period. This bird like dinosaur was no bigger than a cat.

Dinosaurs died out very quickly about 65 million years ago at the end of the Cretaceous period, along with the sea reptiles and pterosaurs. No one really knows why.

JEWELLERY AND glass SHOW CASE 2005



JEWELLERY AND GLASS PUBLIC PROGRAMMES:

WORKSHOPS:

Bookings essential on (09) 306 7040. Places confirmed with payment. To join the Stevenson Dinomites Club go to our website www.aucklandmuseum.com and click Kids Stuff.

Glass Mosaics with artist Galia Amsel

TUESDAY 19 JULY, 10.30AM-12.00PM

Senior Workshop (Aged 7 to 10 years)
\$12.50 (\$10 for Dinomites)

Take a tour of the *Glass Invitational NZ* exhibition with artist Galia Amsel and design your own mosaic with glass tiles and pebbles. 12 attendees.

Jewellery Workshop with artist Anna Bates

THURSDAY 21 JULY 10.30AM-12.30PM

Advanced Workshop (Aged 10 to 13 years)
\$15 (\$12 for Dinomites)

Take a gallery tour and look at the jewellery of Warwick Freeman and Tanya Zoe Robinson, then come to a jewellery workshop with artist Anna Bates and design, cut, bend, shape, hammer and combine metals with natural materials, to make jewellery for yourself or someone special. 12 attendees.

FILM SCREENING:

Decorative Arts: Jewellery and Glass

SUNDAY 7 AUGUST, 3PM

A film screening in collaboration with NZ Film Archive, showing historical and contemporary glass and jewellery practice in NZ. APEC Room.

JEWELLERY PANEL DISCUSSION:

'Bone Stone Shell – Reconsidered'

WEDNESDAY 10 AUGUST, 6PM

A panel discussion by leading jewellers and cultural commentators on the influence of the Bone Stone Shell era on contemporary New Zealand jewellery. In association with the Auckland Museum Institute. \$10 (\$5 students). APEC Room; entry via East Door.

GALLERY TALKS:

Give and Take

SUNDAY 14 AUGUST, 2PM

Artist Warwick Freeman and curator Damian Skinner provide a guided floor talk to the exhibition *GIVEN: Jewellery by Warwick Freeman*. Decorative Arts Gallery East.

Artists In Conversation

SATURDAY 20 AUGUST, 2PM

Glass artists Galia Amsel and Claudia Borella give insight to their work in the context of the *Glass Invitational NZ* exhibition. Decorative Arts Gallery West.

Curator Gallery Talk

SUNDAY 28 AUGUST, 2PM

Take a tour of the *Glass Invitational NZ* with curator Stephen Higginson. Decorative Arts Gallery West.

Members' Monday: NZ Glass on display in the Museum Shop

MONDAY 29 AUGUST, 2-3PM

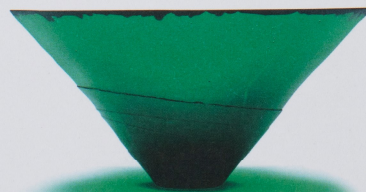
Colleen Mullin, Shop Manager, will discuss the NZ glass on display in the Museum Shop. She will explain the overall strategy to modernise and the direction of commercialisation in the Museum.

STEVENSON DISCOVERY CENTRE 10-MINUTE ACTIVITIES

Tuesdays & Saturdays, 9 July – 24 July

DAILY IN THE DISCOVERY CENTRES. NO NEED TO BOOK, JUST POP ON IN. \$2 (\$1 FOR DINOMITES).

1.30pm – 3pm: Beautiful Bracelets



Auckland Museum celebrates contemporary New Zealand design with three exhibitions showcasing the art of glass and jewellery making.

8 JULY - 4 SEPTEMBER 2005

GLASS INVITATIONAL NZ

A biennial survey of contemporary New Zealand glass art
Decorative Arts Gallery East

Glass Invitational NZ, a biennial survey of contemporary New Zealand glass art, is firmly established as the premier exhibition of New Zealand glass.

The current exhibition features fourteen of New Zealand's leading glass artists and surveys the major achievements, innovations and developments of New Zealand glass art.

MILFORD HOUSE LTD

Toured by Milford House Limited Curated by Stephen Higginson

content:content

Jewellery by Tanya Zoe Robinson

Decorative Arts Gallery Central

Sixteen works in sterling silver as well as silk, rubber, shell and textile. This body of work explores the function of jewellery, using the container as format. These pieces refer to the ways in which we communicate through the messages found in jewellery, adornment and costume.

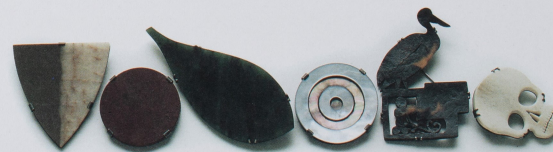


GIVEN

Jewellery by Warwick Freeman

Decorative Arts Gallery West

Warwick Freeman, a laureate of the Francois van den Bosch Foundation and the NZ Arts Foundation, is New Zealand's foremost contemporary jeweller. He is a leading proponent of the movement that has seen contemporary jewellery playing an active role in the expression of cultural identity in Aotearoa. *GIVEN* exhibits 35 works made by Freeman between 1980 and 2000 from national and international collections, both public and private.



membership

FAMILY MEMBERSHIP

Now the whole family (two adults and up to three children) can become members of the Museum for only \$60, and enjoy many fantastic benefits. Kids gain membership to the Stevenson Dinomites Club and can come along and watch the amazing dinosaur performance as many times as they like for free!

As a member of the Museum you will not get asked for an entry donation, just show your membership card and enjoy all that the Museum has to offer (discounted entry may apply for some temporary exhibitions). Take part in our regular Members' Mondays – a special members only event – which can vary from a sneak preview of a new exhibition, to a gallery tour with one of our knowledgeable curators, to a behind-the-scenes peek at the workings of the Museum. Membership also gives you advance notice of exhibitions, lectures and other events.

If you and your family are interested in the world and how it works, and would like to support your Museum, join the club! Or why not give a family membership as a unique gift.

Members enjoy these benefits:

- Free entry to the dinosaur performances
- Free unlimited entry to the Museum
- Members previews of exhibitions
- The quarterly Museum MQ and the Institute Newsletter (adult members)
- Advance notice of exhibitions, lectures, tours, field trips, special functions and school holiday programmes
- Invitations to exclusive members-only events and tours
- Special discounted price for charged exhibitions, lectures, events and kids workshops
- Discount at The Museum Shop and BB's café
- Reciprocal benefits at selected museums in New Zealand and abroad
- Membership in the Stevenson Dinomites Club for up to three children. Additional children may join for a per child subscription of \$20.

Want to join or renew your membership? Fill in the form below and send to: **Membership Dept, Auckland Museum, Private Bag 92018, Auckland** – or hand it in at the **Information Desk in the foyer.**

ANNUAL MEMBERSHIP OPTIONS

- Family: \$60 (TWO ADULTS AND UP TO THREE CHILDREN – INCLUDES MEMBERSHIP TO THE STEVENSON DINOMITES CLUB FOR CHILDREN UNDER 12 YRS)
 Individual: \$50 Joint: \$55 Child: \$12 (UNDER 12 YRS) STEVENSON DINOMITES CLUB
 Student: \$40 (WITH CURRENT ID) Senior: \$40 (WITH CURRENT ID)

MEMBER DETAILS:

Family name: _____ First name: _____

JOINT MEMBERS Other cardholder's name: _____

FAMILY MEMBERS Child name: _____

Child name: _____

Child name: _____

Street address: _____

Telephone: _____ Email: _____

PAYMENT DETAILS:

TOTAL: \$ _____

Cheque Cash Please charge my credit card: Visa Mastercard

Cardholder's Name: _____ Signature: _____

Card No: _____ Expiry Date: _____

library

MUSEUM LIBRARY: MONDAY TO FRIDAY 1-5PM
INFORMATION CENTRES: 10AM - 5PM 7 DAYS
CONTACT US: LIBRARY@AUCKLANDMUSEUM.COM

EX LIBRIS

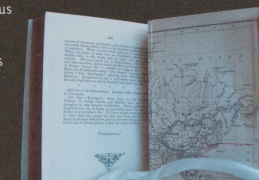
Random rot : A journal of three years' wanderings about the world by James Edge Partington.
Altrincham : Printed at the Guardian office, 1883.

A young man with independent means, James Edge-Partington toured the South Pacific from 1879 to 1881 and again in 1897. *Random Rot* records the first of these voyages. It was privately printed and is very rare.

The experiences, during which he collected extensively, developed into an enthusiasm that formed the basis of his future life. As an ethnologist his knowledge of Pacific cultures enabled him to correct details about the origins of objects in major British museum collections which he recorded with fine sketches in his famous *Ethnographical Album of the Pacific*.

Later in life he amassed a substantial library of books, maps and pictures relating to Australia, New Zealand and the Pacific.

His collection of 2,500 ethnological objects was acquired by Auckland Museum in 1924.



MATAPUNA ON THE MOVE

Matapuna, the Natural History Information Centre has moved to a new location in the Origins gallery on the 1st floor. It is now more accessible and on a scale where staff and volunteers can easily interact with visitors. The traditional information sources such as books, charts and clippings are supplemented by computers, videos and DVDs.

The design is by Rewi Thompson and incorporates the land and sky into the design. Bookcases appear fractured like our earthquake-prone landscape and have a band of backlit pounamu running through them. The paper screen 'clouds' are used for projection and signage.

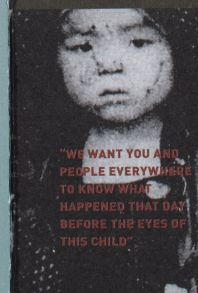
The space is multifunctional. The computer desks convert into display tables and classes of up to 15 can sit on fold up seats to watch presentations projected onto one of the 'clouds'.



TOUR THE LIBRARY – MEMBERS ONLY

Wednesday 24 August, 6.30pm for 7pm

Discover stored history seldom seen; witness the unveiling of valuable and rare new acquisitions and follow Bruce Ralson (Manager Library and Information Services) the inner depths of one of the few heritage libraries in the country. Refreshments will be served.



hiroshima nagasaki a-bomb

5 - 17 AUGUST: PICTORIAL GALLERY

"WE WANT YOU AND
PEOPLE EVERYWHERE
TO KNOW WHAT
HAPPENED THAT DAY
BEFORE THE EYES OF
THIS CHILD"

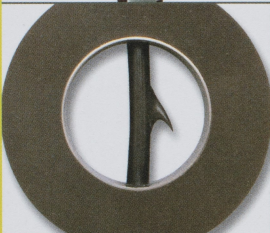
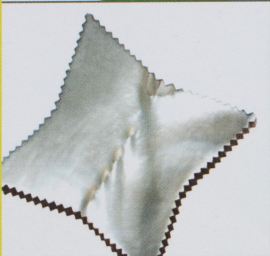
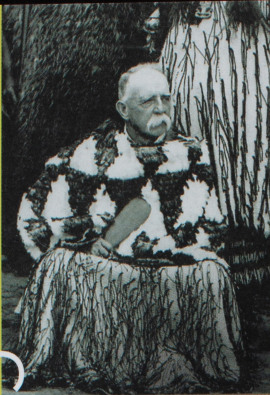
Sixty years ago the Japanese cities of Hiroshima and Nagasaki were the first to be attacked by nuclear weapons. The cities were devastated and thousands of lives were lost in an instant. The suffering inflicted by the atomic radiation of the

bombs' blasts on those who survived still continues.

Hiroshima Nagasaki A-Bomb is a collection of photographs and artefacts that depict the consequences of the bombings from 1945 through to the international peace initiatives of today.

The *Hiroshima Nagasaki A-Bomb* exhibition was gifted to the people of New Zealand by the mayors of Hiroshima and Nagasaki in 2003.

exhibitions at a glance



SPECIAL EXHIBITION HALL

Ko Tawa – Taonga from our Ancestral Landscapes

11 JUNE – 28 AUGUST

In his lifetime Captain Gilbert Mair (1843-1923) was presented with many taonga (ancestral treasures) by Maori communities throughout the North Island. Mair, also known as Tawa, accepted these taonga understanding the obligations they represented and dedicated his later life to assisting Maori. The exhibition celebrates the taonga passed into Mair's keeping, which today forms an integral part of Auckland Museum's Maori collection.

DECORATIVE ARTS GALLERY WEST

Glass Invitational NZ

8 JULY – 4 SEPTEMBER

A biennial survey of contemporary New Zealand glass art, firmly established as the premier exhibition of New Zealand glass. The current survey features 14 of New Zealand's leading glass artists. This exhibition again demonstrates the international significance of New Zealand contemporary glass art.

DECORATIVE ARTS GALLERY EAST

GIVEN – Jewellery by Warwick Freeman

8 JULY – 4 SEPTEMBER

New Zealand's foremost contemporary jeweller exhibits 35 works created between 1980 and 2000, from national and international collections, both public and private.

DECORATIVE ARTS GALLERY CENTRAL

content:content – Jewellery by Tanya Zoe Robinson

8 JULY – 4 SEPTEMBER

Sixteen works in sterling silver using silk, rubber, shell and textile. Sixteen works in sterling silver as well as silk, rubber, shell and textile. This body of work explores the function of jewellery, using the container as format.

PICTORIAL GALLERY

Hiroshima Nagasaki A-Bomb

5 AUGUST – 17 AUGUST

A moving pictorial exhibition marking the 60th anniversary of the bombing of Hiroshima and Nagasaki. Kindly supported by the Japanese Embassy and presented from a Japanese perspective.

COMING SOON

PICTORIAL GALLERY

Flora: The Botanical Drawings of Nancy Adams

2 SEPTEMBER – 30 OCTOBER

An exhibition paying tribute to Nancy Adams, one of New Zealand's greatest botanical illustrators. Featuring stunning watercolours and drawings created by Adams over a fifty year period.

DECORATIVE ARTS GALLERIES EAST AND WEST

Zambesi: Edge of Darkness

22 SEPTEMBER – 6 NOVEMBER

Zambesi: Edge of Darkness is a survey of this leading New Zealand fashion label. The exhibition explores the curious relationships between fabric and function, influential silhouettes and artesian embellishment of stitch, print and texture – which are essential elements to every Zambesi collection. Curated by Dr Peter Shand.