



AUCKLAND WAR MEMORIAL MUSEUM

NEWS

Number 54 June 1993

ISSN 0111-2252



Te Arawa Treasures Welcomed Home

A large group of elders and supporters from Ngati Whatua and Tainui assisted Auckland Museum staff in the transfer of four very important Te Arawa objects on loan to the Bath-House Museum in Rotorua, under a five year renewable agreement. The taonga returned include Tutanekai's flute which was made from the arm bone of a priest who broke tapu. Legend tells that Tutanekai became a skilful performer on the flute and continues with the enchanting love story of Hinemoa's swim to Mokoia Island.

Another taonga returned is a stone image of the goddess Horoirangi which was carved from the cliff in a sacred grotto at Tihi-o-Tonga. The stone figure was worshipped as a guardian spirit, ensuring the fertility of the land. The other two items were a dog-skin cloak woven in the early nineteenth century by Pareraututu, who crafted the cloak as a "garment of pain" and a rain-cape worn by Tohi Te Ururangi.

Elders from Te Arawa travelled to Auckland for a pre-dawn ceremony at the Museum and the large contingent then travelled with the taonga to Taharangi Marae in Rotorua and then to the Bath-House. The accompanying ceremonies were very moving, reflecting the great significance that the people of Te Arawa attach to this return to their place of origin of these four taonga.

Photograph: Kuia of Te Arawa greet the Taonga on their arrival at the Bath-House

Tainui Whaleboat & Anchor from Bounty Change Berth

You could feel the nostalgia as Auckland Museum staff watched the historic whaleboat *Tainui* swing its quarter tonne weight from the Maritime Hall into the main foyer early in the morning on May 4th. After some careful manoeuvring, it was loaded onto a boat haulage truck waiting outside the main doors. An anchor from the *HMS Bounty* followed and together they began a voyage by land across Auckland city to the Hobson Wharf Maritime Museum.



continued next page

The Museum Council decided to place on loan to Hobson Wharf Maritime Museum (due to open in August) its entire maritime collection, in the spirit of close co-operation that exists between the Museum and other cultural organisations in Auckland.

The *Tainui* had been in the Auckland Museum for 53 years. Originally traded to Maori in the Bay of Islands in about 1869, it was later purchased by Mr John MacIntosh who used it for bay whaling for several seasons from Cape Karekare to the North Cape. In 1902, the time of the wreck of the *Elingamite*, the *Tainui* was used to intercept the *SS Zealandia* off North Cape in rough weather, thus averting a disaster.

The iron anchor from *HMS Bounty* was abandoned by the mutineers after it was used to help free the ship from a coral reef off Tahiti in 1789. It was recovered in about 1890 and presented to the Auckland Museum.



Photographs: The *Tainui* is winched and lowered to the main foyer to begin the journey to Hobson Wharf.



EXHIBITIONS

Reflecting on Success

The Auckland Museum's exhibition in celebration of the centennial of women's suffrage entitled **Reflections: New Zealand Women's Lives Presented through the Collections of Auckland Museum**, was visited by nearly twenty thousand visitors in seven weeks of opening from 19 March to 9 May. A suffrage activity centre entitled **A Celebration of Women**, established by the Museum Schools Service in association with the exhibition, was fully booked for the two weeks it was open in April. The associated Women's Suffrage Lecture Series was very well attended, as was a range of public programmes including performances and demonstrations. The Lecture Series continues throughout the year (see back page for details).

Objects from the exhibition will be displayed throughout the Museum for the remainder of suffrage centennial year and a women's suffrage trail is being prepared.

Photograph: Meria Johnson, one of the women included in the Reflections Exhibition, demonstrates the art of tapa cloth making.



FLETCHER CHALLENGE
CERAMICS AWARD 1993



Photograph: Acting Applied Arts Curator Angela Lassig with a figural group purchased for the Museum's Collections, entitled *Venus et Amour* by young English potter Philip Eglin.

Ceramics Awards a Real Challenge

Kari Christensen, the celebrated Norwegian ceramist and judge of the 17th **Fletcher Challenge Ceramics Awards**, acknowledged that it was indeed a 'terrible task' to have to select one overall winner from the 800 entries. Working through 2000 slides, her task was to select 150 exhibits and to choose a premier award, five merit awards and a number of certificates of merit. The winning sculpture, titled *Lobo California* by Susannah Israel of California, was announced at a special awards ceremony on June 3. Running until July 4 in the main exhibition hall, this internationally acclaimed exhibition of 150 pieces by many of the world's finest ceramists, will act as a drawcard to many thousands of visitors.



Wednesday

Title: Plan
Natu

Speaker: Dr F
from the Dep
and Regional
A&M Univer
Director, Haz
and Recovery

Wednesday

Title: Thi
Acti

Speaker: Dr M
Flanders, Ass
Institute of A
Dartmouth C

Wednesday

Title: A C
life
Geo

Speaker: Eric
Map Editor, N
Geographic S
Washington D

CHALLENGE
MARCH 1993



Arts Curator
group
Collections,
Young English

wards llenge

celebrated
and judge of
allenge Ce-
knowledge
terrible task'
overall win-
es. Working
her task was
nd to choose
merit awards
ertificates of
sculpture, ti-
y Susannah
s announced
eremony on
July 4 in the
this interna-
xhibition of
f the world's
ill act as a
ousands of

EXHIBITIONS

Royal Doulton will Dazzle

Another ceramics exhibition of international importance is coming to the Auckland Museum from 4 September to 31 October. **The Courier Post Royal Doulton Ceramics Exhibition** is described as a unique and sumptuous assortment drawn from public and private collections in New Zealand and Australia. It will include over 700 beautiful examples of Royal Doulton's achievements in ceramics, including sculptured figurines, Bunnykins cups, toby jugs and decorative plates. This is a rare chance to see some unique items. A range of exciting public programmes is being finalised in association with this event, including a special members open evening. Members will be advised of details in August.

FEATURES

Museum Shop First Port of Call

When Auckland City Council and Ports of Auckland were each seeking a special and unique trophy for the Auckland to Japan Yacht Race, they looked no further than the Auckland Museum shop, which is famous for its hand-crafted artefacts. The two trophies Shop Manager Isabelle O'Connor provided were a resounding success and were acclaimed here and in Japan. The trophies, commissioned from Neil Brown and Neil Hanna, are both prime examples of New Zealand craft.



Photograph: Mayor of Auckland, Les Mills, presents a trophy to Fukuoka Mayor Keiichi Kuwahara.

Science and Technology Week

Coordinated by the Royal Society of New Zealand and the New Zealand Science Teacher's Association, Science and Technology Week at the end of April became the focus of a number of demonstrations in the main foyer of Auckland Museum. Here Conservator Julia Gresson demonstrates dyeing techniques for textile conservation to a group of school children.



STAFF NEWS

Anthony Wright, Acting Manager, Collections has been appointed to a new position of Assistant Director, Collections. Mr Wright will take up his new duties in late June, after a period of leave.

Sherry Reynolds, the Museum's Assistant Director (Development and Communications) has now left to take up a position with the New Zealand Historic Places Trust.

Cecilia Street has recently joined the Botany Department, funded by the Lottery Department to work two days a week helping to database the herbarium backlog. Also joining Botany as a temporary technician, we welcome **Mike Clearwater**.

Sandy Sparks is now working in the Library, responsible for interloans and handling public enquiries.

Greg Motu (of Ngati Pou) has been employed under a Lottery Science grant, on a part-time basis, to assist the Marine Section's survey of the Waitemata Harbour.



Robin Maitland has been appointed as the new Zealand p... March at th... death, Rob... decided to b... tographic o... land Museu... illness, he h... Photograph... Maitland to... tens of thou... colour trans...

Unfortun... and this tas... staff memb... volunteer... Gordon's d... tory is neari... has begun o...

Robin's o... 3,000 of his... will be ent... photograph... for compute... tion. The Li... purchase co... lished work... and calend... members ha... ing to dona... be very grat...

NEWS

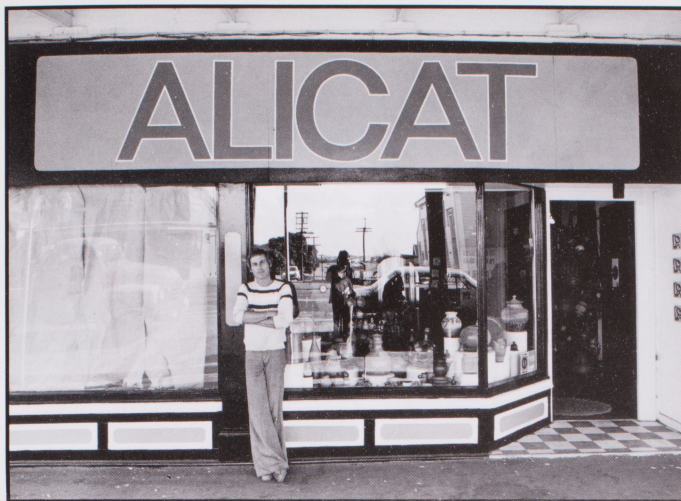
t, Acting Man-
ns has been ap-
new position of
tor, Collections.
take up his new
une, after a pe-

, the Museum's
ctor (Develop-
munications)
take up a posi-
ew Zealand His-
ust.

s recently joined
Department,
Lottery Depart-
two days a week
abase the her-
g. Also joining
emporary techni-
elcome *Mike*

now working in
responsible for
handling public

Ngati Pou) has
d under a Lot-
rant, on a part-
ssist the Marine
rvey of the
rbour.



Tribute to Robin Morrison

Robin Morrison, acclaimed New Zealand photographer, died in March at the age of 48. Before his death, Robin and his family had decided to bequeath his entire photographic collection to the Auckland Museum Library. Despite his illness, he had intended to assist the Photograph Librarian, Gordon Maitland to identify and arrange his tens of thousands of negatives and colour transparencies.

Unfortunately this was not to be, and this task has fallen to a Library staff member, Janice Chong and volunteer David Loftus, under Gordon's direction. A basic inventory is nearing completion and work has begun on storing the collection.

Robin's own selection of about 3,000 of his best and favourite shots will be entered into the Library's photographic database as a trial run for computerizing the whole collection. The Library is attempting to purchase copies of all Robin's published works which include prints and calendars as well as books. If members have copies they are willing to donate, the Museum would be very grateful.

Robin preferred his photographs to be published, as this made them more accessible to people. His images appear in some 26 books, including *Auckland: city and sea* (1989); *Sense of place* (1984); *Robin Morrison: at home and abroad* (1991) and *The South Island of New Zealand: from the road* (1981).

Robin's black and white portraits feature famous New Zealanders and overseas visitors. In his local work especially, we see his ability to view the unfamiliar, unusual and quirky as authentically and distinctively



Charles Fleming Award Lecture

Tuesday August 3, at 1pm

Title: Ecological Restoration - Impossible Dream or Achievable?

Venue: Classroom

Speaker: Dr Ian Atkinson, Senior Ecologist at Landcare Research Lower Hutt has been awarded the 1993 Charles Fleming Award for Environmental Achievement in recognition of his outstanding contribution to New Zealand and international ecology and conservation.

"New Zealand".

Robin Morrison's work represents a valuable contribution to the Museum Library's already extensive photograph collection where it will be used, and preserved, as a fitting tribute to a highly respected professional photographer and a thoroughly likeable person.

Photographs: (above) Peter Sinclair, Alicat, Jervois Road (from Ponsonby businesses calendar 1977).

(below) Kathy Knott, now Auckland Museum's Public Relations Manager, grooms the DB Clydesdales during a tour of the South Island in 1987, when she was Sponsorship Executive with Dominion Breweries.

CHALLENGE
WARD 1993

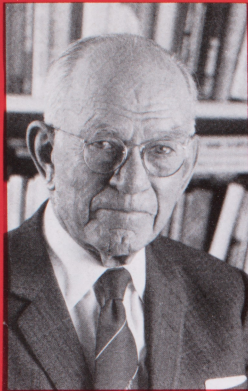


ed Arts Curator
al group
n's Collections,
young English

Awards challenge

he celebrated
and judge of
challenge Ce-
acknowledged
'terrible task'
e overall win-
ries. Working
her task was
and to choose
merit awards
certificates of
sculpture, ti-
by Susannah
as announced
ceremony on
il July 4 in the
, this interna-
exhibition of
of the world's
will act as a
thousands of

Fulbright Lecture Series



We are honoured to present, for the first time, a series to be given by American Scholars under the New Zealand-United States Educational Foundation 1993 Fulbright scholars programme. Recipients of these awards are distinguished in their field of research and come from varied disciplines. Each lecture will focus on the speaker's special area of expertise and will comment on their work in New Zealand.

All lectures will commence at 1 pm in the Museum classroom.

Wednesday July 14

Title: Planning for Natural Disasters

Speaker: Dr Phillip Berke from the Department of Urban and Regional Planning, Texas A&M University and Associate Director, Hazard Reduction and Recovery Centre.

Wednesday July 21

Title: Thinking Locally, Acting Globally

Speaker: Dr Nicholas E. Flanders, Associate Director, Institute of Arctic Studies, Dartmouth College.

Wednesday July 28

Title: A Cartographer's life at the National Geographic

Speaker: Eric Lindstrom, Map Editor, National Geographic Society, Washington DC.

Thursday August 5

Title: Popularity of American National Parks: Causes and Consequences

Speaker: Dr Robert Righter, Associate Professor of History, University of Texas at El Paso.

Thursday August 12

Title: Money Changes Everything: Carnegie Libraries & Reform of Cultural Anthropology

Speaker: Dr Abigail Van Slyck, Assistant Professor at the College of Architecture, University of Arizona.

Thursday August 19

Title: Women in the US Indian Wars

Speaker: Dr Sherry L. Smith, Associate Professor of History at the University of Texas at El Paso.

LECTURES

Marine Science Lecture Series

Entry: West door, by donation

Time: 7.30pm

Wednesday 14 July

Topic: Marine Reserves - the new conservation frontier

Speaker: Dr. Bill Ballantine, Leigh Marine Laboratory

Well-known New Zealand scientist and our foremost advocate of marine reserves will present an illustrated talk to bring us up to date with the present situation and also present a path forward for the future conservation of the diversity of our marine world.

Wednesday 28 July

Topic: Shellfish harvesting and recreational fishing - issues for Auckland in the 1990s

Speakers: Dr. Bob Drey and Dr. Tony Sylvester, MAF Fisheries, Auckland

MAF Fisheries scientists Todd Sylvester and Bob Drey will present the results of surveys addressing two topical fisheries issues confronting Auckland - recreational fishing and intertidal shellfish harvesting.

Wednesday 11 August

Topic: New Zealand's underwater world - the range of subtidal rocky habitats from the Kermadecs to Stewart Island

Speaker: Dr. Roger V. Grace, Consultant in marine research and underwater photography.

Renowned underwater photographer and marine scientist Roger Grace will present a spectacularly illustrated talk on the wide diversity of colourful marine life that lives on rocky substrates throughout the length and breadth of New Zealand.

LECTURES

1993 Suffrage Lecture Series

In recognition of the centennial of women's suffrage, Auckland Museum continues its lecture series given by women, in our main auditorium, from 1 - 2pm. Each lecture will focus on the monthly theme that has been identified by the Suffrage Centennial Trust.

July Theme: Women and Safety

Tuesday, 13 July

Speaker: Jane Tolerton,
Writer

Title: Ettie Rout and Safe Sex. Was she the 'Guardian Angel' or 'Wickedest Women'?

August Theme: Women and Health

Wednesday, 4 August

Speaker: Yvonne Lake,
Obstetrics Consultant
Middlemore Hospital

Title: To be announced

September Theme: Women, Politics and the Vote

Wednesday, 1 September

Speaker: Sonia Davies, MP

Title: What Have Women
Done with the Vote?

Restaurant 360° Members Discount

From Monday to Friday, all Institute members enjoying lunch at Auckland's revolving restaurant, Restaurant 360°, will receive a 15% discount (food only). Just advise the restaurant when booking that you are an Institute member. Their address is 15th floor, Telecom Building, Hopetoun Street, Phone 358-4360. We would also like to thank Restaurant 360° for their sponsorship in printing our gallery guides in German.



RESTAURANT



Museum Geology Club Takes Off

Established in December 1992 the Auckland Museum Geology Club now has an active membership of over 50 enthusiasts. Recent field trips have looked at the volcanoes of Whatipu and Auckland, fossils at Kaawa and the fossils, limestone and caves around Waitomo. Evening meetings on a wide range of topics are held on the third Tuesday of the month at 7.30pm in the Museum Classroom. All welcome.

Planned future trips are around Auckland City's stone buildings on July 4 and to the tip of Whangaparaoa Peninsula in August. Contact Bruce Hayward, Auckland Museum.

PROGRAMMES AND DEMONSTRATIONS

Music and Spinning in the Museum

These two popular free series continue until December 5. **Music in the Museum** by students from Auckland University School of Music continues on the first Sunday of every month at 12 noon in the Furniture Hall.

The Auckland Handweavers and Spinners Guild will also continue demonstrations in the Main Foyer on the first Sunday and third Wednesday of every month from 1 to 3 pm.

Special Conservation Week Lecture

Thursday August 5th, 7.30

Topic: Saving our Volcanoes,
Landforms and Geysers
- Raising the Profile of
Earth Science Conser-
vation in New Zealand

Speaker: Bruce Hayward

Entry: West door by
donation

Conservation Activity Day for Children

A range of activities will take place on Sunday 8 August at 1.30-3.30pm. Come and join us.

Auckland War Memorial Museum was erected in the Auckland Domain in 1929 and extended in 1960 as the Memorial to those from Auckland Province who died in the two World Wars. It is administered by the Auckland Institute and Museum, whose origins go back to the first Auckland Museum of 1852. Auckland Museum News is issued free to members of the Institute and Museum, a group of friends and supporters of the Museum.

Auckland Institute and Museum, Private Bag 92018, Auckland, Phone 0-9-309 0443.