

Museum Quarterly is the official magazine of the Auckland War Memorial Museum. June 2000. Issue 82



Whodunnit?

Supported by the Government of New Zealand through the Science and Technology Promotion Fund.

The Auckland War Memorial Museum has created a new opportunity for budding detectives – the chance to solve a murder mystery.

Whodunnit?, the first exhibition of its kind to be held in New Zealand, opened at the Museum on Saturday 29 April. It reveals the science of solving crime and museum visitors are given the chance to solve a “murder” using the latest forensic methods.

“Visitors arrive at the crime scene – the Mystery Café – and are invited to gather clues that they then go on to test in a crime laboratory,” said Katrina Stamp, curator of *Whodunnit?* “A hands-on exhibition, visitors will be able to use the methods employed by the police and forensic investigators, such as DNA testing, gun identification and fingerprinting to solve the crime.”



“It’s a chance for everyone to play detective for the day, as well as to take a behind-the-scenes look at the specialised skills and technologies used by the ‘back-room’ people of crime detection.”

While *Whodunnit?* has been curated to particularly interest children, Katrina Stamp says the fascinating science revealed by the exhibits and interactive components of the show are attracting people of all ages.

The Museum has consulted with an advisory group to mount the exhibition, including members of ESR’s forensic team, the New Zealand Police and a forensic pathologist.

Detective Senior Sergeant Kevin Baker of the Auckland Criminal Investigation Unit says he is excited about the opportunities presented by *Whodunnit?*

“This provides a great educational tool to show the public what goes on behind the scenes of crime-solving. We have provided technical advice throughout the exhibition, covering the areas of identification, fingerprinting and crime scene reconstruction.”

Katrina Stamp said *Whodunnit?*’s overall aim is to raise the level of scientific understanding amongst the general public.

“The collection of evidence, documentation and research needed to solve crime uses many of the same methods we employ to learn about and



(Above and lower left:) Children from the Child Cancer Foundation and their families enjoy some detective role playing at ‘Whodunnit?’

curate collections for the Museum. *Whodunnit?* is an opportunity to highlight some of these skills to the public.”

The exhibition is being sponsored by the Government

of New Zealand through the Science and Technology Promotion Fund. The *New Zealand Herald* and *Newstalk ZB* are also proud supporters of *Whodunnit?*

A precious work in progress

When a huge Spermwhale jawbone washed up on Whatapu beach on the West Coast in January 1999, it was just the start of its journey. Found by the Department of Conservation, who cleaned the three-metre long bone and removed the teeth, the jawbone was presented to Ngāti Whatua, the local Iwi.

The jawbone, from the whale estimated to be over ten metres long, was gifted to Auckland Museum in March this year to be prepared for display in the Maori Natural History Gallery.

David Weatherley, the Museum’s Preparator has

embarked on the job of preparing it for display. Each tooth has to be replaced and reset into the cleaned bone with special modelling material in a painstaking process that is likely to take David a number of weeks.

The jawbone will then be mounted for display in its new home during July.



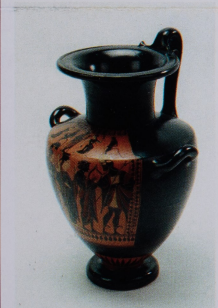
Ancient Civilisations

The Auckland Museum is home to a small but fascinating collection of artefacts representing ancient world cultures. A small gallery on the ground floor has been designed to give visitors access to glimpses of cultures from both the Old World, like Egypt, Greece and Rome, and the New World like the Americas and early Europe.

Approximately one-third of the display showcases Egyptian artefacts, including two mummy portraits that were attached to mummies when they were entombed. Also featured are predynastic painted storage posts that are 5000 years old.

China also has a strong presence in the gallery with ceramic, bronze and jade artefacts ranging in age from the Neolithic Period (21st Century BC) to the Tang Dynasty (618-906 AD). The Chinese collection features many visitor favourites that have not been on display since the closure of the Museum's Asian Hall.

But there is perhaps one noticeable omission in this gallery – the mummy. We have received many requests asking for the return of this popular exhibit and MQ will endeavour to keep you up to date with its journey through conservation, with the help of your admission donation, and an expected date for its restoration to the Ancient Civilisations gallery.



Water container showing 'The Judgement of Paris', circa 525-520BC, part of the Classical Greek collection in Ancient Civilisations.

An eclectic music collection

Housed in one of the Museum's newest galleries, opened in December 1999, is a selection of unique and unusual musical instruments.

The Castle Collection spans from the English medieval period through to the present century, even tracing the movement to recorded music. It includes rare violins, an 18th century harpsichord and an eclectic collection of instruments associated with New Zealand's pioneer days.

Instruments of note include the 1781 harpsichord by Jacob and Abraham Kirckmann of London, one of only two in New

Zealand; and one of the two surviving 300-year old Thomas Stanesby tenor recorders in the world.

Amassed over 50 years by the late Wellington collectors Zillah and Ronald Castle and comprising over 480 instruments, the Castle Collection was acquired by the Auckland Museum in late 1998, saving it from being lost to overseas buyers. One of the largest acquisitions ever made by the



The Castle Collection.

Museum, this collection offers visitors the chance to view the most significant collection of European musical instruments in any New Zealand institution.

Honouring a national hero

Auckland War Memorial Museum is proud to be hosting a new display about Captain Charles Upham, VC and Bar, the only combatant soldier ever to win two Victoria Crosses; the Commonwealth's highest award for bravery.

Upham's first Victoria Cross was recommended for his gallantry in the Crete campaign. Even though Crete was lost, Upham led his men into many fierce battles, against a far better equipped enemy.

His second Victoria Cross came from two recommendations but was combined into one for his extraordinary deeds in the desert battles of Minqar Qaim and Reweissat Ridge.

At Reweissat Ridge Upham was captured and taken to Italy as a prisoner of war. He made such frequent escape attempts that his exasperated captors eventually sent him to "escape-proof" Colditz Castle. When liberated by American soldiers in April 1945, Upham was ready to fight again, but was denied because of his status as a ex-POW.

In May 1945, he received his first Victoria Cross at an investiture at Buckingham Palace. After the war, the ever-humble Charles Upham shunned the celebrity thrust upon him by the New Zealand public and returned to farming, and his family. He never acknowledged his hero status, and maintained that the

soldiers under his command were the real heroes.

Running until 20 August 2000, the small display, on loan from the Army Museum in Waiouru, will be in the "blue room" by the Spitfire in the Scars on the Heart Gallery on the 2nd floor of the Museum.

Upham's story is one of an ordinary New Zealander who accomplished extraordinary things and this valuable display contains the two Victoria Crosses won by Upham, paintings by Peter McIntyre, a video presentation and a wide range of Upham memorabilia. It will give visitors an insight into a great man whose bravery,



Charles Upham's daughter, Amanda, visits the exhibition about her extraordinary father.

courage and commitment in battle made him such a celebrated legend.

The Museum Combo

As part of an ongoing association with the National Maritime Museum of New Zealand and the Auckland Art Gallery, the Auckland Museum has launched a new product aimed at the international tour group market.

The Museum Combo is designed to provide international visitors with an easy way to experience three of New Zealand's "must see" cultural and heritage attractions. For one price, the all-day package includes:

- A private viewing of Auckland Museum's world renowned Maori and Pacific galleries and a cultural performance, with an additional breakfast option;
- Admission to the Maritime Museum with an hours sailing and lunch aboard the traditional sailing scow *Ted Ashby*; and
- Afternoon tea and an escorted guided tour of the magnificent collections of the Auckland Art Gallery.

This package will offer tour group operators a one-stop cultural experience for their customers, and any enquiries about The Museum Combo should be directed to Nancy Crawford, Manager – Sales, Tourism & Events on 09 306 7086.

Auckland Museum Institute



INSTITUTE NEWS

March 2000

Events

Please note that the programme this quarter uses a variety of venues. We have a number of prestigious science lectures this quarter including the very important Archey Lecture which is aimed at secondary school students and their families.

GREEN CHEMISTRY: SUSTAINING A HIGH TECHNOLOGY CIVILISATION

Professor Terry Collins, Carnegie Mellon University. Joint meeting with New Zealand Institute of Chemistry, Auckland Branch, **Thursday 29 June, 7.30pm**, Large Chemistry Lecture Theatre, Chemistry Department, University of Auckland, 23 Symonds Street, Auckland.

To attain selectivity in chemical reactions, chemists employ almost the entire periodic table. In contrast, Nature employs relatively few elements and succeeds with its selectivity objectives with sophisticated reagent design. In this strategic difference lies a root cause of much of the environmental damage attributable to chemistry.

Of particular importance is a recognition of the role that the elemental composition of a technology plays in producing persistent pollutants. The lecture will review the two primary classes of persistent pollutants. Toxic elements form the first class; they are the prototypical persistent pollutants. The second class of persistent pollutants is comprised of particularly stable molecular compositions that often arise when elements such as chlorine that are familiar to life are used in technology in vast quantities in processes either not found in Nature or used only to a small degree in Nature. In the next century, one of the most important challenges confronting green chemists is that of moving the elemental balance of chemical technology much

closer to that of life processes. The imperative of incorporating ethical concepts with respect to achieving sustainability into chemical education will also be discussed.

2000 RUTHERFORD MEMORIAL LECTURE: THE INFORMATION TECHNOLOGY REVOLUTION!

What will Alter its Progress? Professor Michael Kelly FRS, FEng, University of Surrey. **Tuesday 11 July, 7.30pm**, Auckland War Memorial Museum, entry via the East Door.

The principal driver of the IT revolution is the increased performance at reduced cost that has been achieved on the silicon chip and elsewhere in microelectronics by miniaturising the devices and circuits. For the first time, some fundamental limits, such as the discrete size of a silicon atom or the speed of light, are appearing as possible showstoppers on the way. With a focus on materials issues in particular, the potential showstoppers for miniaturisation are analysed. This is dangerous, as previous naysayers have all been proven wrong. A hint is given of what the next paradigm might be in the era when improvements to chip technology have been exhausted. Note that if there were a radical alternative to take over from silicon at that stage, we would have to know about it already, for the manufacturing technology to be in place in time.

2000 ARCHY LECTURE: WALKING WITH DINOSAURS – A VIEW FROM THE BUSH

Dr Mark Large, Massey University, **Sunday 6 August, 3pm**, The Maidment Theatre, Auckland University, corner of Princes & Alfred Streets. Adult entry by "gold coin" donation.

The TV series *Walking with Dinosaurs* represents the most ambitious project BBC Science have yet undertaken, utilising animatronics along with computer graphics to recreate

the flora and fauna of the Jurassic and Cretaceous. Background material was filmed in seven international locations. All chosen for their unusual flora of predominantly conifers

and ferns. New Zealand has played a major role receiving 3 visits from the 12 person crew and appearing throughout the 6 part documentary (in particular episodes 4 and 5.) Why was

Jim Goulstone

On October 3, 1999 Jim Goulstone died after a brief illness. Jim was a member of the Institute's Conchology Section for nearly 40 years and will be sorely missed by his many friends and colleagues. His interest was initially on marine molluscs, but this quickly changed to a lasting dedication to knowledge and conservation of small New Zealand land snails.

In an early article (*Poirieria* 5:1,1969) he refers to the "latin names out of all proportion to the snail's size". Later papers were peer reviewed publications. He is acknowledged as an expert in the field and was the author of several new species. He generously shared his knowledge with club members both by giving talks and leading field trips. We enjoyed Jim's tendency to understatement and his dry sense of humour.

In 1992, with 11 other club members, Jim became a volunteer and soon after a Research Associate in the Marine Department at the Auckland Museum. He donated and accessioned all his own collection to the Museum. In a mammoth task he checked identifications, rehoused and with Ramola Prasad accessioned the large Museum snail collection (around 20 000 lots, of these 15 000 identified by Jim). It is now the best documented collection of New Zealand landsnails anywhere in the world and in pristine condition for future researchers. Not content with examining the shells Jim taught himself how to dissect the snail animal

under the microscope, opening up a whole new field for study. The following story written by Jim himself in 1996 is typical of his dedication and humour.

"The week of last year's Ellerslie Flower Show also saw the grounds of Auckland's Government House open for two days. Gladys and I gave the former a miss, but set out on a wet Friday with our umbrellas to see what grandeur the latter had to offer. An information brochure at the guardhouse with a useful map plus lots of arrows on stakes, plus lots of volunteer guides with arm bands, none-the-less failed to inform us of the greatest treasure the garden had to offer. A pristine rock outcrop with some original native growth, mostly karaka and mahoe. Of course you guessed, the rocks were full of native snails and we hadn't taken a bag or even a tube, so while Glad strode ahead pretending she had nothing to do with me, I guiltily collapsed my umbrella and filled it with leaf litter. How foolish I felt inspecting the rest of the gardens in the rain using a bulging umbrella as a walking stick." Jim then proceeded to list the species of snails he extracted at home, a total of 24 species he found in the leaf litter he collected in the Government House gardens"

Jim used to say "I am just a tomato grower," indeed the tomatoes were of exceptional quality – and so was Jim. (For more detailed articles dedicated to Jim members are referred to *Poirieria* 25, May 2000)

NZ vegetation so important? How was this series made? What really killed the dinosaurs?

(Travel and advertising expenses were generously sponsored by **Bayer New Zealand Ltd**)

PORCELAIN LECTURE

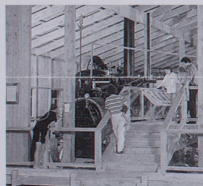
Presented by the Auckland War Memorial Museum and the Auckland Museum Institute.

Sunday 13 August, 3-5pm. School Room, Auckland War Memorial Museum.

Anton Gabszewicz will be giving a lecture on antique porcelain as well as discussing some of the objects from the Museum's collection. A specialist in antique porcelain with over 30 years experience Anton joined Christie's in 1975 and was a principal auctioneer for many years. He was one of the first experts to take part in the original BBC Antiques Roadshow and for ten years appeared regularly on that programme.

Anton is happy to identify objects brought in by those attending the lecture but please note that this is not a valuation session and owners bring the objects at their own risk.

Seats are limited to 100 and admission is by ticket only, \$7 for Auckland Museum Institute members, \$10 general admission. Don't miss out, ring 09 309 0443 x883 today to book your seat.



STARDOME. AUCKLAND OBSERVATORY FAMILY EVENING.

Thursday 17 August, 7pm

Come along and see the heavens from a different perspective! Suitable for all the family we are booked in for a one and a half hour session which includes the Planetarium Show – *Mana Whetu*, telescope viewing and a tour of the night sky looking at the constellations. Members and their families will be eligible for a discounted \$5 per person entry fee. The Observatory is located on the left just inside the Manukau Road entrance to One Tree Hill.

TOUR OF MAORI GALLERIES Sunday 27 August, 9am.

Auckland War Memorial Museum, entry via the front entrance.

Charles Berryman will lead a tour of the new Maori Galleries for members and their families. This morning tour is designed to take advantage of the partial natural lighting in the galleries and is for those who prefer not to go to evening events. Come along and hear inside information about how the galleries were put together and the stories the objects tell. Then afterwards have brunch at *BB's Café!*

Anton is happy to identify objects brought in by those attending the lecture but please note that this is not a valuation session and owners bring the objects at their own risk.

Seats are limited to 100 and admission is by ticket only, \$7 for Auckland Museum Institute members, \$10 general admission. Don't miss out, ring 09 309 0443 x883 today to book your seat.

Other items

PRESIDENTIAL SCRIBBLINGS

I write this on the first day of the *Whodunnit? – the science of solving crime* exhibition from

Recent Institute fieldtrips which were interesting and a lot of fun! (Left:) *The Kauri Museum – Matakohē*. (Below:) *The Watercare "Rainforest Express" – Waitakere Ranges*.



which I have just returned. Don't miss it! Fascinating, interesting, ghoulish (for those into that), a riddle to be solved, and a lot of background information as well. Children of all ages will revel in it. It goes for a few more weeks yet, so there's still time.

For some months now your Council has been working on a comprehensive plan for the future of the Institute, following upon the questionnaire sent to members in March 1999 and discussed at a Special General Meeting last July. The final draft was endorsed at the May Council meeting, and is available to all Institute members for your comment and, we hope, your active support.

We have been particularly concerned with (a) the service we offer members, and thereby the ways to increase our membership, and (b) the diverse ways in which we can and do support the Museum and help carry out its functions. We will certainly be calling on members to assist in both these matters.

The Plan addresses six themes that have emerged as the significant headings for our roles and functions: membership; support of the Auckland War Memorial Museum; outreach & networking; relations with the AWM; advocacy; and administration & systems. For each theme there are one or more goals and methods by which these goals shall be achieved. Membership is given top priority because this constitutes the resource from which the others are (or are not) realised. Members have a vital role in the success of all.

Any member wishing to receive a copy of the Plan needs only to phone our Administrator (09 309-0443 x883). – *Jack Grant-Mackie*

A BIG THANK YOU

To all of you who have made donations to the Institute's

three funds so far this year. In particular the following people are acknowledged for significant donations in the past three months: Dr R and Mrs G Deane, Miss J Dingley, Mr L Hounsell and Mr DR Simmons.

MUSEUM SESQUICENTENARY GIFT

Your help, gift suggestions please! The Museum will be 150 years old in 2002, and your Council believes that many Institute members would wish to participate in presenting a significant gift to commemorate this sesquicentenary. Before we begin a fund-raising campaign we need ideas for such a gift. What do you think is suitable? Your suggestions, together with indicative costs, will be greatly appreciated. Please give this careful thought, let your imagination run riot! Then send your ideas into the Institute Administrator.

WEBSITE & ASTEG

The Institute website is finally up although some pages are under construction. Members can access Institute and programme information, download forms and find links to other sites. Surf to <http://akmusinst.rsnz.govt.nz/>. The Institute has joined the Auckland Science & Technology Egroup (ASTEG), a Royal Society of New Zealand initiative which aims to improve communication of science events in Auckland via an e-mail calendar notification system. Those of you on e-mail should have already received information about ASTEG. If you would like to join or find out more contact Hugh Grenfell <h.grenfell@auckland.ac.nz>. It works well and is highly recommended.

INSTITUTE CONTACT DETAILS

Auckland Museum Institute Administrator, c/- Auckland War Memorial Museum, PB 92018, AUCKLAND. Phone: 09 309 0443 x883.

Do you have...

Information Services are on the search for period clothes from the 1920s, 30s, 40s and 50s, for both men & women, as costumes for actors to wear in character in the galleries. If anyone has any clothes, hats, shoes, coats etc that they think may be suitable, it would be much appreciated. We would be grateful if you could contact either Lucinda Blackley on 09 306 7070 x737 or Katrina Smit x738.

Living Treasures

Living Treasures is a programme that will bring Auckland Museum galleries alive, adding a human dimension to the taonga (treasures) in the collection. Demonstrations, performances, talks, tours, theatre and music and the opportunity to handle Museum collections are all activities that will enhance the visitor experience. As well as organised events, "chance encounters" will occur in the galleries where visitors will get the chance to watch and talk to curators, demonstrators, craftspeople and performers.

The aim of this programme is to promote the importance of people in museums. Outside experts, museum volunteers and every staff member will be involved in making Living Treasures a reality and will have the opportunity to share their specialist knowledge and skills directly with visitors.

On the 3rd Sunday of every month, the Museum will be holding a "Living Treasures Day." This day will see the Museum come alive with demonstrations, activities and performances. If you have any skills that you would like to share with visitors to the Museum and would like to be part of "Living Treasures Day," please contact Katrina Smit on 09 306 7070 ext 738.

For more information about upcoming programme of Living Treasure, please see the "What's Coming Up" section on Page 4 of this issue or check our website at www.akmuseum.org.nz

Cultural performances and demonstrations like those shown here at the March 18 Festival, are key components of Living Treasures.



New Director Maori

Paul John Tohi te Ururangi Tapsell is a member of the well-known Tapsell family who trace their descent from the main tribes of Te Arawa and have strong genealogical affiliations throughout the Bay of Plenty and Waikato regions. From 1990-94 he was curator of the Rotorua Museum which was initially founded by his grandmother, Enid Tapsell. He represented the Rotorua region on the Historic Places Trust and was a national member on the former Museum Association of Aotearoa New Zealand. Paul returned to fulltime study in 1994 and completed an M.A. (First Class Hons) in Anthropology at the University of Auckland. His 1995 thesis titled *Pukaki: te taonga o Ngati Whakauae ki Rotorua* investigated the oral and written histories surrounding the taonga named Pukaki then reposing in the Auckland Museum. Upon completing his

M.A. Paul was invited by the Pitt Rivers Museum to read for a doctorate in Museum Ethnography at the University of Oxford where he completed his doctoral thesis: *Taonga – a tribal response to museums* (1998). Paul then accepted a post-doctoral fellowship at the Australian National University in Canberra (1999-2000). In recent months Paul returned to New Zealand and has been assisting the University of Auckland in the development of a new Museums and Cultural Heritage programme. On the afternoon of 22 May 2000, with the support of over 100 of his Te Arawa elders – led by Wihapi Te Amohau Winiata, Tutewehiwehi Kingi

MQ

From the Director

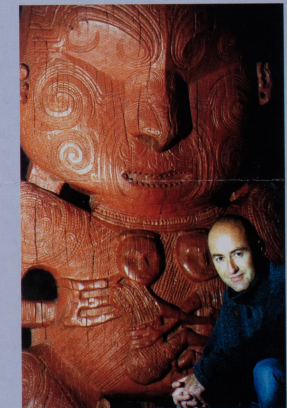
At a dinner on 31 May to announce the annual New Zealand Institute of Architect/Resene Architectural Awards, Noel Lane Architects were awarded one of the five National Architectural Awards for their work in the refurbishment of our Museum. They had previously been awarded a Regional Culture and Heritage Award. The judge's citation acknowledged that the Museum was a "complex and highly demanding project that has been designed with great skill."

It has been my privilege and pleasure to work with Noel Lane Architects and the many talented designers, professionals, and specialists who have contributed to the work on the Museum building and the exhibition, for five years. I am sure I speak for the Museum Board, and the entire consultant, staff and contract staff team in extending to Noel and his team our congratulations on a job very well done.

During the events celebrating the conclusion of all the refurbishment works held earlier in the year, I had cause to reflect on the origins of the refurbishment project, and the people in the early 1990s who faced up to the deteriorated circumstances of the Museum, seized the moment, turned the tide of decline and secured the initial funding commitments.

The Council of the then Auckland Museum and Institute, the former Museum Trust Board and some key local authority representatives on the former council are to be congratulated and thanked for their foresight and vision. Without their recognition of what had to be done, their energies and their commitment, none of this would have happened.

T.L. Rodney Wilson
Director



Paul with the carving of Pukaki, now returned to Rotorua.

and Rangipuwhe Maika – Paul was ceremonially inducted into the Auckland Museum as its new Tuakiaki Maori/Director Maori.

What's coming up

Whodunnit?: The Science of Solving Crime

29 April–23 July

Don't miss this exciting hands-on detective exhibition for children. It incorporates scientific and technological skills and activities to give children and their families a behind-the-scenes look at the work involved in the detection and solving of crime.

Mason Handprints

24 June–3 September

An exhibition celebrating the work of William Mason, New Zealand's most successful designer of textiles and wallpapers. Throughout the 1960s and the early 1970s Mason Handprints set the standard for smart interior design from the violently abstract to the elegantly restrained. Decorative Arts Gallery West on the first floor.

Charles Upham VC and Bar

27 May–20 August

This small display of one of New Zealand's finest war heroes, celebrates Charles Upham, the only combatant soldier ever to win two Victoria Crosses. By the Spitfire in Scars on the Heart on the second floor.

Warren Mah

25 June

Origami display in the Main Foyer from 2-5pm.

Heather Yaya Lecture

15 August

Heather, from the Louvre in Paris, will speak about a new French museum called Le Musee de l'Homme, formerly known as Trocadero Ethnographic Museum. In the Apec Room from 4.30pm.

July School Holiday Programmes

1–16 July

Be a CRAFTY DETECTIVE at the Museum!

Get out your magnifying glass and sneak, snoop and sniff your way into the Museum to track down some fun!

The Discovery Centre will be running a great range of holiday craft activities. These cost \$6 each. \$5 for Dinomite members.

Two-hour Craft Programmes:

Sock Puppets – Make a puppet and learn about puppetry!

Flute Making – Make and decorate a flute!

Dinosaurs! – Travel back in time to the age of the Dinosaurs!

Ancient Egypt – Print your own T-shirt in the designs of Ancient Egypt!

Booking is essential! See your Dinomite magazine for details.

Plus, 10-minute activities will be running in the Discovery Centre every day of the Holidays, 10-12am and 1:30-3pm. These cost \$2 each. \$1 for Dinomite members.

They include: Badge making; Spinning tops; Window butterflies; Paper marbling; Bracelet making and Funky animal cards!

No booking necessary!

You don't need to be a private eye to enjoy these activities, but you might want to become a Dinomite member! Dinomites get extra FREE holiday workshops just for them, plus heaps of great discounts!

Living Treasures Programme

Every 3rd Sunday of the month starting 18 June 2000.

Following events will be on 23 July, 20 August, 17 September.

18 June Programme: Lei making; Chinese fortune telling; role play in Wild Child, Haha te Kahawa and weavers from Unitec; a dramatic presentation of a soldier from Passchendale and a nurse from Gallipoli in Scars in the Hearts I. Demonstrations of heritage crafts such as embroidery and Afghan rug making. Guided tours will also be available at set times.

Castle Collection Series

A programme of performances and lectures relating to the

Castle Collection. "Music in the Museum Day" will take place on the first Sunday of every month from 3.30pm in the Apec Room. Dates are: 2 July, 6 August, 3 September.

The English Rose Series

This series of 3 lectures will examine aspects of English influence in the Museum collections, from 3.30pm in the Apec Room. Dates for the lectures are Sunday 16 July, Sunday 30 July, Sunday 13 August.

On 13 August from 3-5 pm, Anton Gabszewicz (from BBC Television's *Antiques Roadshow*) will be giving a lecture on antique porcelain, including some from the

Museum's collection. Admission is by ticket only, \$10 general admission, \$7 for Auckland Museum Institute members. Ring 09 309 0443 x883 today to book your seat.

Civilizations Lecture Series

These lectures will be on the following dates at 3.30pm in the Apec Room: Sunday 27 August, Sunday 10 September and Sunday 24 September.

From the Collection: 9 July, screening film footage from the museum collection.

For information on any of the above events or activities, please see our website at www.akmuseum.org.nz or contact Katrina Smit on 09 306 7070 x738.

Donations needed for Discovery Centre

These items are needed for Treasures & Tales: piano seat – padded, long bench style, with opening lid; sewing seat – padded with opening lid also to go with old Singer machine; bean bags or moveable seating; small pairs of shoes from different countries; posters and old calendars of cultural things – food, clothing,

technology, housing, music; hair magazines; theatrical costumes – small sizes; uniforms/work clothes from various professions; Kinder and Trinket type toys; old board games; an old radio; and prism.

If you can help, please phone the Discovery Centre on 09 309 0443 x809.

New Store merchandise

The Museum Store has some exciting new merchandise on offer to add to its diverse range of ethnic products.

The new bags and baskets (as pictured here) are made using traditional harakeke (flax weaving) and will appeal to people who want to both put them to practical use, or display them as beautiful works of art.

Some of these bags have been designed and created by Deedee Nielson who has a long-standing connection with the Museum, having previously performed with the acclaimed Pounamu Maori Cultural Group. A blend of Hawaiian and Maori, Deedee's designs reflect her rich cultural background.

Her raranga (weaving)



For your information. Auckland War Memorial Museum, Private Bag 92018, Auckland, New Zealand.
Telephone 09 309 0443 – InfoLine 09 306 7067 – Facsimile 09 379 9956. Director Dr TL Rodney Wilson.
Hours 10am to 5pm daily. Open every day except Christmas Day and Anzac Day morning.
For information on Membership ring 09 309 0443 x883.

Website: www.akmuseum.org.nz

For information on exhibitions, public programmes or events ring the InfoLine: 09 306 7067.

