

MUSEUM



A Quarterly Guide to Exhibitions and Events
at Auckland War Memorial Museum

SPRING 2003 ^{ISSUE} 96



QUARTERLY



Director's message

From our spot up here on the hill, it feels as though it has been a very damp winter, but with spring approaching, we are about to get under way with our major building programme.

We have been extremely fortunate with our fundraising efforts over the past 12 months. With an initial fundraising target of \$49.5 million, we are pleased to announce that we only have another \$9.2 million to go before we hit target (see page 2 for further details).

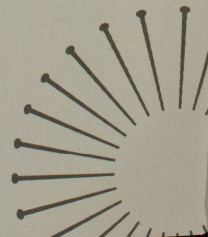
We can now build the entire internal structure of the infill project in the southern courtyard, including the special exhibition hall and the learning centre, and begin work on the underground car park at the southern entrance to the Museum.

The development is going to mean changes for our staff. Some are being temporarily relocated to our off-site facilities and others to office accommodation in Newmarket. However, many staff, including our Children's Discovery Centre, education team, and library staff will remain at the Museum to ensure we continue with our full range of day-time activities.

Please come and view the new Sony interactive DVD Grand Atrium information kiosk located in the front foyer. Every aspect of the new project is included with CAD images and Museum staff talking about the spaces.

We realise there will be some impact on you, our visitors, but have worked hard to minimise these to ensure your visits will continue to be positive, fun experiences.

We look forward to seeing you at your Museum.



SUSTAINING SPONSOR



Auckland War Memorial Museum
Domain Drive Auckland Domain

Open 10am – 5pm daily
Except Christmas Day
and Anzac morning.

Admission is by donation.
\$5 is appreciated.
Children, of course, are free.
Charges may apply to
special exhibitions.

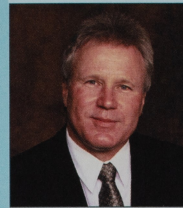
Private Bag 92018, Auckland
Infoline: 09 306 7067
Enquiries: 09 309 0443
Website: www.aucklandmuseum.com

Library: 09 306 7070 extn 687 or 686
Open Monday – Friday, 1pm – 5pm

Museum Store: 09 309 2580

Auckland Museum Institute:
09 306 7070 extn 883
Venue hire: 09 306 7056

Services to schools: 09 306 7040



Head of public programmes appointed

Auckland Museum has appointed a leading museum practitioner to the role of Head of Public Programmes.

The role, which oversees exhibitions, sales and marketing, education and interpretation, has been filled by Australian, James Dexter.

Mr Dexter comes from Melbourne's Victorian Tapestry Workshop and was previously acting director of Melbourne Museum. Director of Auckland Museum, Dr Rodney Wilson, said Mr Dexter brings with him notable achievements in museum development and indigenous relationships.

news in brief

Maori and Pacific resource centre opens

Te Kakano, a groundbreaking Maori and Pacific knowledge centre, has opened in the Museum's Maori Gallery. The Centre, which is the first of its kind in New Zealand, provides a holistic learning environment and is a gateway to the Museum's Pacific collections.

"*Te Kakano* is something unique," says Director Maori, Dr Paul Tapsell. "There are workstations for visitors to access information on the Museum's Pacific treasures, as well as a space for classes, and staff on-hand to support learning and information access. It is a place for the sharing of stories and histories."

Virtual tours plus a database of the Museum's Pacific collections is accessible from Manukau City libraries as well as from *Te Kakano*.

Pacific calendar from The Store

The Museum has produced a stunning CD desk calendar to accompany its soon to be published book on Pacific Jewellery by ethnologist, Professor Roger Neich.

With photography by award-winning Museum photographer Krzysztof Pfeiffer, the calendar retails for \$19.95 and can be purchased from the Museum Store.



Museum raises \$40.2 million towards redevelopment project

Auckland Museum has raised \$40.2 million towards its Grand Atrium redevelopment project. Funds of \$49.5 million are needed for the Atrium's completion.

Following the Government's contribution of \$23.5 million (excluding GST) announced last year, the Museum has received tremendous support from charitable trusts and foundations.

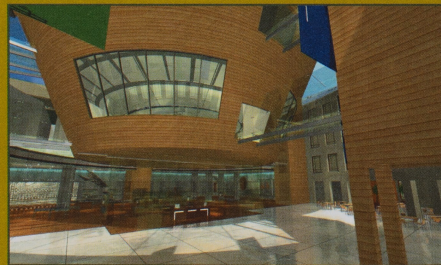
The latest contribution is from the Lion Foundation, which has committed \$1.5 million over the next three years. ASB Charitable Trusts have also made a significant contribution of \$5 million, with the Lottery Grants Board donating a further \$1 million.

Other trusts that have supported the Museum include Sky City Community Trust, the Sir John Logan Campbell Residuary Estate and the Chisholm Whitney Family Trust.

"We are delighted at the support we have received to date," says Amanda Sutherland, Development Manager. "Our Fundraising Advisory Board chaired by John Maasland, is helping the Museum strengthen its business connections and research opportunities for corporate and private donor involvement, including further offers of naming rights."

The Grand Atrium project consists of collection storage and workshops, a new special exhibition hall, an enhanced learning centre, auditorium and a roof top restaurant and events centre. An underground car park will also be constructed. The new development will open to the public in late 2005.

For further information about the Grand Atrium development or to request a copy of the DVD currently on view at the Sony information kiosk in the Museum foyer, please contact Amanda Sutherland on 09 306 7043.



An artist's view of the new southern atrium



THE DESIGN OF FRANK CARPAY



The innovative designs of Dutch émigré, Frank Carpay, are on display at Auckland Museum from October.

Carpay, who arrived in New Zealand in 1953, is most notable for his modernist-inspired Crown Lynn ceramic designs, and for his range of hand-printed fabrics and beachwear.

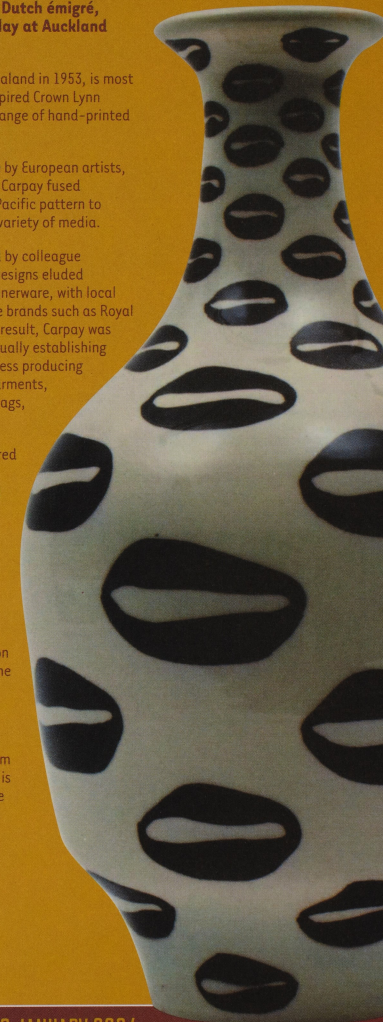
Influenced throughout his life by European artists, Picasso, Matisse and Braque, Carpay fused Continental modernism with Pacific pattern to produce unique designs on a variety of media.

Despite being highly regarded by colleague designers, Carpay's ceramic designs eluded transition to mass market dinnerware, with local purchasers favouring offshore brands such as Royal Doulton and Wedgwood. As a result, Carpay was let go from Crown Lynn, eventually establishing his own screen-printing business producing brightly coloured towelling garments, from beach towels to beach bags, shifts and hooded tops.

These garments, which captured the imagination of New Zealand's youth market, were the precursor to the Pasifika style which typifies much of our local design today.

Frank Carpay focuses on Carpay's work at Crown Lynn between 1953 and 1956, and his vibrant textile designs of the 1960s and '70s. It draws on the extensive collections of the Hawke's Bay Museum, and Auckland Museum's own collection.

Frank Carpay is on display from 17 October to 18 January and is being toured nationally by the Hawke's Bay Museum, Napier.



ON DISPLAY FROM 17 OCTOBER UNTIL 18 JANUARY 2004



Christian Dior, El-Jay, mid - 1960s

After Six & Before Eight presents a selection of fabulous New Zealand cocktail finery from the 1950s to the 1980s.

Inspired by L'Oreal New Zealand Fashion Week 2003, the exhibition traces the evolution of New Zealand cocktail attire. The gowns themselves have been taken from the Museum's own collections and from private lenders. Featured designers include Vinka Lukas, Bruce Papas, Emma Knuckey and Michael Mattar QSM, as well as Gus Fisher's Christian Dior licensed label.

The cocktail dress for women was born in the 1920s, as cocktail parties became chic social gatherings. The need arose for special garments which were less formal than dinner clothing, yet more adorned than daywear.

After Six & Before Eight takes a look back at the history of Auckland's cocktail dresses and their designers, and explains their role in shaping contemporary New Zealand fashion as it is today.



ON DISPLAY FROM 10 OCTOBER UNTIL 9 NOVEMBER 2003

AFTER SIX & BEFORE EIGHT

The Cocktail Dress in New Zealand

POMPALLIER: TE HOKINGA MAI - THE JOURNEY HOME

In April 2002, the remains of Bishop Jean-Baptiste Francois Pompallier were interred in Hokianga, 130 years after his death.

The progress of his body's return from a small village graveyard on the outskirts of Paris, to Motuti in the far North, is chronicled in a moving exhibition of photographs which have been supplemented by a number of Pompallier's personal effects, on loan from the Auckland Sisters of Mercy and the Catholic Diocesan Archives.

Approximately 100 images by photographer Karel Lorier trace the journey of Pompallier's remains from France to New Zealand, including the exhumation of his remains in Puteaux, a requiem mass performed in Pompallier's local Lyon church and the release of his body from Notre Dame. Also chronicled is the three month hikoi - or pilgrimage - to places of significance to Bishop Pompallier in New Zealand.

Personal belongings on display include prayer books printed on the Pompallier House press, Pompallier's travelling altar, throne and desk, his ring, cross, bible and cape.

Bishop Pompallier was consecrated titular Bishop of Maronia with responsibility for Western Oceania in 1836. He established missions in the western Pacific as well as founding the Catholic Church in New Zealand where he set up a printing press, founded missions, and became the first Catholic Bishop of Auckland, where he was based from 1850 to 1869.



Bishop Takuiru Maru and a local priest with Pompallier's casket on board a waka, Tauranga Harbour



Pihopa Pomparie Hikoi Tapu, south head of the Hokianga harbour Rangipoint, north western shores of the Hokianga harbour

ON DISPLAY FROM 18 OCTOBER UNTIL 18 JANUARY 2004

Wallace Art Awards

The Wallace Art Awards are to be hosted at Auckland Museum in September.

The Awards, which are the longest running contemporary art awards in New Zealand, recognise outstanding work in the media of painting, sculpture and photography.

Established 12 years ago by arts patron, James Wallace, the Wallace Awards play a significant role in promoting and supporting contemporary New Zealand art. Winners receive one of three prizes which will be announced on 14 September and presented by Waitakere City mayor, Bob Harvey.

Four awards are up for grabs; the Paramount Prize, valued at over \$35,000, a second prize consisting of a three month residency in New York, and two emerging artist awards.



Judy Miller - Winner of the 2002 Wallace Art Awards

Presentation of the awards at the Museum will be televised live on TV One's Sunday programme at 7.30pm.

Finalists' work will be on display in the Museum's Decorative Arts Galleries from 14 September until 5 October 2003.

ON DISPLAY FROM 14 SEPTEMBER UNTIL 5 OCTOBER 2003

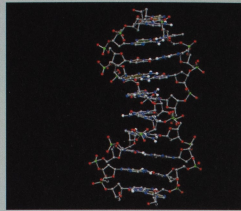
NEW SCIENCE AND ARTS GALLERIES OPEN THIS SPRING

The Museum is to refurbish two of its galleries this spring, with a major exhibition on the history of DNA, and another on the arts of Korea.

DNA: the X factor, unravels the story of DNA in the 50th year since its structure was discovered. From the scientists who established the make-up of the molecule, to its impact on science and culture, *DNA: the X factor* explores the impact and application of DNA, using examples from local and international research.

Topics explored include the human genome project – the race to identify every one of the human body's 30,000 genes – where DNA is located, how it's constructed and how it determines everything from eye-colour to a predisposition for certain diseases. The ethical debate around genetic modification is also explored.

DNA: the X factor



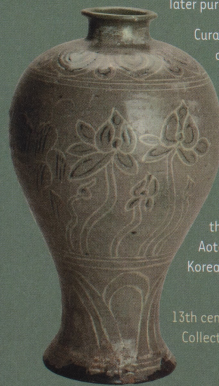
DNA: the X factor, is due to open on 19 November in the Human Impacts Gallery.

OPENING 19 NOVEMBER 2003

Korean arts

Opening on 21 September with a special day of Korean cultural celebrations, is a new gallery of Korean arts on loan from the National Museum of Korea.

Dating from the 5th to the 20th centuries, works to be displayed include fine ceramics, furniture and bronzes which were originally collected by New Zealander Peter Rule and later purchased by the National Museum of Korea.



Curator of Applied Arts, Louis le Vaillant says the collection contains the most significant examples of Korean historical material in New Zealand. Its particular strength lies in the celadon glazed wares, which were used as firsthand teaching material by local studio potters and played a crucial role in the development of the New Zealand studio ceramics movement.

The Arts of Korea display is located in the first floor Logan Campbell Gallery and is generously supported by the Asia 2000 Foundation of New Zealand, Museums Aotearoa, The Korean Society of New Zealand and The Korea Foundation.

13th century South Korean stoneware with celadon glaze. Collection of the National Museum of Korea.

OPENING 21 SEPTEMBER 2003

GOLD & SACRIFICE

treasures of ancient peru



Gold & Sacrifice: Treasures of Ancient Peru, unearths the might and mystery of one of the world's great lost civilisations, from the simple, artistic societies of the central Andes nearly 3000 years ago, to the grand opulence of the Inca Empire.

Human sacrifice, the afterlife and the supernatural, are all explored in this internationally touring exhibition of the finest Pre-Columbian treasures ever seen in New Zealand.

Gold & Sacrifice is indemnified by the New Zealand Government. It is generously supported by sponsors Walker & Hall and LanChile.

Win a trip to Peru or one of five gold bangles when you visit *Gold & Sacrifice*

Be in the draw to win a trip for two to Peru flying LanChile and follow the Inca Discovery Trek with Intrepid Journeys and Adventure Getaways, when you visit the exhibition; or win one of five gold bangles each valued at \$1000, from estate jewellers, Walker & Hall. Pick up an entry form from Walker & Hall stores, or from the Museum.

ON DISPLAY UNTIL 28 SEPTEMBER 2003

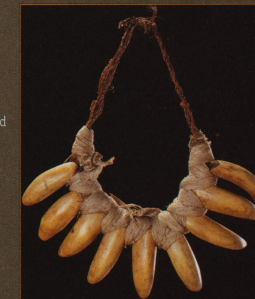
THE POWER OF JEWELLERY: PACIFIC JEWELLERY AND ADORNMENT



Celebrating the upcoming book on Pacific jewellery from Museum ethnologists, Roger Neich and Fuli Pereira, is an exhibition of Pacific body adornment.

The book, entitled *Pacific Jewellery and Adornment*, features beautiful and detailed photographs of Polynesian, Melanesian and Micronesian jewellery by photographer Krzysztof Pfeiffer, and takes readers through the role, manufacture and symbolism of traditional jewellery in the Pacific.

The exhibition explores these themes further, giving visitors an opportunity to experience the power of Pacific jewellery in its cultural context. Large photographs showing Pacific people wearing their jewellery will be displayed alongside the items of jewellery themselves.



All of the jewellery items featured in both the book and the exhibition have been drawn from the collections of Auckland Museum.

The Power of Jewellery: Pacific Jewellery and Adornment will be on display in the Pictorial Gallery until 7 December 2003, with the Pacific Jewellery and Adornment book, due for release early next year.

ON DISPLAY UNTIL 7 DECEMBER 2003

Museum Circle

Hillary Lecture 2003

Each year, the Museum Circle - a membership group in support of Auckland Museum - organises a high profile international lecture.

This year, the Circle brings to Auckland former Lebanese hostage and foreign correspondent, Terry Anderson.

Synonymous with the Middle East hostage crisis of the 1980s, Anderson was kidnapped in 1985 and held captive until December 1991 - longer than any other American in Lebanon.

Today, Anderson is a commentator on Middle East politics and American foreign policy, using his experience in Beirut to debate the United States' war on terror, the World Trade Centre attacks and the current situation in Iraq.

Hear Anderson's story of survival and share his insight into global politics and the Middle East, on Wednesday 29 October and Thursday 30 October at the Centennial Theatre, Auckland Grammar School.



Former Lebanese hostage, Terry Anderson

Tickets are \$38 and are available from Ticketek on 09 307 5000.

For further information please contact Rozelle Edwards on 09 413 9212 or email circle@aucklandmuseum.com

Become a Museum Circle member

Become a Museum Circle member and support acquisitions, programmes and development at Auckland Museum.

Circle members coordinate and attend a range of premier events, including sponsorship of the prestigious Hillary Lecture, and an annual Patrons' Dinner.

Funds raised from Circle activities contribute to the Museum's ongoing acquisition and building programme.

The Museum Circle offers three levels of membership; Museum Circle patrons, Museum Circle benefactors, and the Inner Circle, an under-35 year old sub-group of the Museum Circle whose events are aimed at a younger audience.

For more information on Museum Circle membership contact Kaye McNight on 09 377 5653 or email newyork@xtra.co.nz

What's up on the hill

SEPTEMBER

Sunday 14 September

Music in the Museum

The Philharmonic Society Orchestra, Mania Room, 3pm.

Sunday 21 September

Living Treasures Day - Korean Cultural Celebration

A day of events celebrating the opening of a new display on the arts of Korea. In conjunction with the Korean Film Showcase, part of the AK03 festival.

Sunday 28 September

Time in Motion - Happy Holidays!

This month's film screening from the New Zealand Film Archive looks at the great Kiwi holiday. Mania Room, 3pm.

OCTOBER

Sunday 5 October

Music in the Museum

A series of solo performances from Auckland University's School of Music students. Ocean's Gallery, 3pm.

Wednesday 15 October

The Lucy Cranwell Lecture 2003

Botanist Dr David Galloway, explores the influence of pioneer botanists Sir William Jackson Hooker and son Sir Joseph Dalton Hooker, on the early study of New Zealand flora. Mania Room, 7.30pm, entry via East Door.

Thursday 16 October

It was a great year '53!

Lincoln University's Dr Jonathan Hickford, discusses the future and impact of DNA. Mania Room, 7.30pm, entry via East Door. Members free, others gold coin donation.

Sunday 19 October

Living Treasures Day - Diwali

Celebrate the Indian festival of lights. Experience a 'Taste of India' with talks on cuisine and sign-up for a spicy cooking class with the Auckland Cooking Academy.

Thursday 23 October

Stopping the superbugs of tomorrow

University of Canterbury's Dr Jack Heinemann, explores the development of antibiotic resistance and the possible health impacts. Mania Room, 7.30pm, entry via East Door. Members free, others gold coin donation.

Tuesday 28 October

Where do Pacific peoples come from?

Director of the Allan Wilson Centre, Professor David Penny, discusses the origin of Pacific peoples using DNA to trace evolutionary migration. Mania Room, 7.30pm, entry via East Door. Members free, others gold coin donation.

NOVEMBER

Sunday 2 November

Music in the Museum

Student performances from Auckland University's School of Music.

Thursday 6 November

The Life of Maurice Wilkins and the Discovery of DNA

Massey University's Professor David Parry, presents the life of New Zealand Nobel Laureate, Maurice Wilkins and his role in a defining moment of 20th century science. Mania Room, 7.30pm, entry via East Door. Members free.

Sunday 16 November

Living Treasures Day - Joy and Festivity

A special day of Christmas activities.

SCHOOL HOLIDAY PROGRAMME 20 SEPTEMBER - 5 OCTOBER 2003

HIGHLIGHTS

Wednesday 24 September and Wednesday 1 October

Wetasaurus Wednesdays

Come and say hi to Dinomite Club president Wetasaurus. 11am and 2pm.

Wednesday 24 September

Behind the scenes tours

Bookings are essential, telephone 09 306 7077 from 15 September. Dinomites free, \$5 for non-Dinomites. 11am and 2pm.

Friday 26 September

Inca storytelling

Find out what it was like to be an Inca. Treasures & Tales, 1.30pm. Ages 7+

Sunday 28 September

Dig it up dinosaur day

Excavate some 'dinosaur bones' in the Museum Store with Dig It Up! Or do one of our dinosaur craft activities in the Discovery Centre and go in the draw to win a Dig It Up kit!

City trail

Pick up an Auckland City Museum trail. Available every day as part of the AK03 Festival.

Colouring competition

Pick up a colouring competition and go into the draw to win tickets to Disney and Pixar's new movie, *Finding Nemo*.

10-MINUTE ACTIVITIES

Indulge your creativity with some cool art and crafts. Suitable for all ages. No bookings required. All activities cost \$2 (\$1 for Dinomites). Daily from 10am - 12 noon and 1.30pm - 3pm.

Mondays and Fridays

Snake Puppets

Lei-making

Tuesdays

Rainbow Starfish

Mirror Frames

Wednesdays and Sundays

Dinosaur Rubbings

Badge-making

Thursdays and Saturdays

Foam Animals

Spin & Spiral Art

WORKSHOPS

Bookings are essential. Phone 09 306 7077 to make a booking from Monday 15 September. Please meet the educator in the main Museum foyer.

SENIOR: aged 7-12 years; \$8/\$5 for Dinomites.

Tuesday 23 September

Creating Sea Creatures

10.00am - 11.30am and 1.00pm - 2.30pm

Monday 29 September

Too Cool Tiles

10.00am - 11.30am and 1.00pm - 2.30pm

JUNIOR: aged 4-6 years; \$6/\$5 for Dinomites.

Friday 26 September

Make a Pumpkin Goody Bag

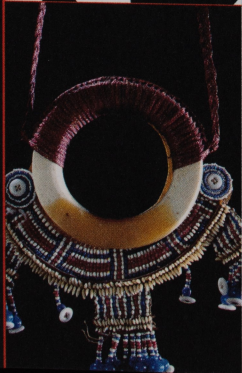
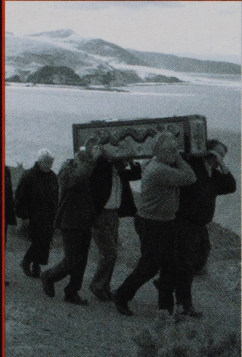
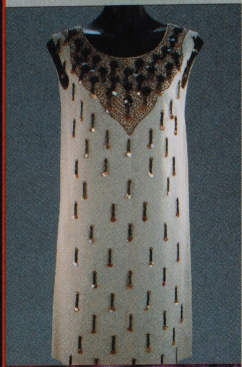
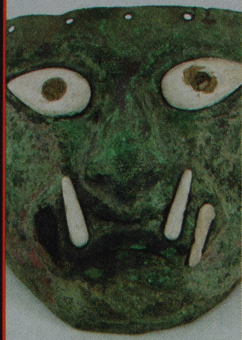
10.00am - 11.00am and 1.30pm - 2.30pm

Thursday 2 October

Rainsticks

10.00am - 11.00am and 1.30pm - 2.30pm

Exhibitions at a glance



Special Exhibitions

Gold & Sacrifice: Treasures of Ancient Peru

Until 28 September 2003

Explore the might and mystery of the Incas and their ancestors in this priceless exhibition of gold and ceramics from Peru.

After Six & Before Eight

10 October - 9 November 2003

An historic collection of New Zealand's cocktail finery dating from the 1950s to the 1980s.

Decorative Arts Gallery East

Wallace Art Awards

15 September - 5 October 2003

An exhibition of finalists from New Zealand's longest-running contemporary art awards.

Pompallier Te Hokinga Mai - The Journey Home

18 October - 18 January 2004

Photography and memorabilia following the journey home to New Zealand of the remains of Bishop Pompallier.

Frank Carpay

17 October - 18 January 2004

An exhibition exploring the work of Crown Lynn ceramic artist, Frank Carpay. From drawings and ceramics, to textiles and photographs.

Pictorial Gallery

The Power of Jewellery: Pacific Jewellery and Adornment

Until 7 December 2003

Exquisite Pacific jewellery and accompanying photographs featured in the upcoming book of the same name.