

MUSEUM

AUTUMN 2003

A Quarterly Guide to Exhibitions and Events
at Auckland War Memorial Museum

ISSUE 94



QUARTERLY



Mar/Apr/May 11A

SUSTAINING SPONSOR



Auckland War Memorial Museum
Domain Drive Auckland Domain

Open 10am – 5pm daily
Except Christmas Day
and Anzac morning.

Admission is by donation.
\$5 is appreciated.
Children, of course, are free.
Charges may apply to
special exhibitions.

Infoline: 09 306 7067
Enquiries: 09 309 0443
Website: www.aucklandmuseum.com

Library: 09 306 7070 extn 687 or 686
Open Monday – Friday, 1pm – 5pm

Museum Store: 09 309 2580

Auckland Museum Institute:
09 306 7070 extn 883

Venue hire: 09 306 7056

Services to schools: 09 306 7040



Director's message

Welcome to MQ, Auckland Museum's quarterly magazine.

As many of you will be aware, last year, this Museum celebrated not only its 150th birthday, but the achievements of a great New Zealander, Sir Edmund Hillary.

Later this month, our exhibition on his great life travels to Washington DC and to National Geographic's Explorers Hall. A proud moment for this Museum and for Sir Edmund.

A number of exciting international shows will take its place in the coming months. Firstly, a rare exhibition of exquisite Islamic treasures collected by the Kuwaiti Royal family. Comprised of fine and beautiful objects from a wide range of nations, this exhibition provides us with the opportunity to gain greater understanding of a rich and expansive culture.

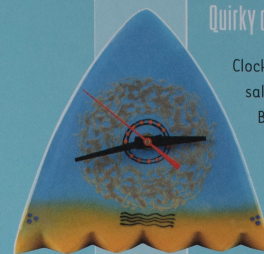
Running simultaneously with *Islamic Art & Patronage* is Magnum Photos' 50th anniversary exhibition, *Our Turning World*. Both of these exhibitions can be viewed at a special double price.

Scheduled to open in July is the highlight of our year – *Blood & Gold: Treasures of Ancient Peru*. An exhibition of the gold, power and ritual of Ancient Andean culture, *Blood & Gold* features in particular, the ritual of human sacrifice.

As we go to press, resource consent for our Grand Atrium project is being finalised. Construction of an underground car park is hoped to commence in July or August, with work on the infill building beginning in September. Some staff will be relocated while building is underway, however the impact on visitors is expected to be minimal.

There's much to see at Auckland Museum this year, so join us as we present some marvellous exhibitions and get started on a Museum for the new millennium.

Dr T.L. Rodney Wilson
Director



Quirky ceramics from The Store

Clocks and teapots with unconventional angles are now on sale at The Museum Store thanks to a remarkable artist, Brendan Adams. Innovative, colourful and sassy, each piece is individual yet practical. Clocks are available from \$180, teapots range in style and prices from \$144 while mugs start at \$44.

news in brief

Hillary fans head for the hills

Aucklander Tony Rizzi has won a trip for two to Nepal through adventure specialists, World Expeditions. Tony, who visited Auckland Museum's exhibition *Sir Edmund Hillary: Everest and Beyond*, completed a special entry form for Auckland ratepayers. World Expeditions are adventure travel specialists who offer small group journeys and adventures to every continent in the world. For more information on their expeditions, see www.worldexpeditions.co.nz.



Vodafone Silver Ferns to gift netball memorabilia

Netball New Zealand is to donate its historic collection of netball memorabilia to Auckland Museum. Netball New Zealand CEO, Shelley McMeeken, said the organisation had been looking for a solution to archiving the sport's historic items and documents and was delighted to form a new relationship with the Museum.

"It's comforting to know that our past will be well looked after in the hands of Auckland Museum and gives us peace of mind that nothing will be lost." Items from the collection include uniforms, balls, photos and programmes.

Treasures from Kuwait Islamic Art &

Patronage

ISLAMIC ART

Adults \$10, Concessions \$7.50

Priceless objects made for princes, shahs and sultans will be on display from 18 April when Auckland Museum presents a breathtaking exhibition on the art of Islam.

Islamic Art & Patronage, which comes to Auckland from the Kuwaiti royal family's al-Sabah Collection, presents rare objects of exceptional beauty and includes some of the Islamic world's finest examples of artistic and scientific achievement. The works span from the 8th to 18th century and regions stretching from China through the Middle East and on to Spain.

Begun in 1975 by Sheik Nasir Sabah al-Ahmad al-Sabah and his wife Sheikha Hussah al-Sabah, the collection is now regarded as one of the most important in the world. It reflects not only the intricacy and beauty of Islamic art, but the rich history of arts patronage in Islamic culture.

Objects included in the exhibition range from 10th century glass and ceramics, to exquisite gold-leaf texts, fine carpets and gem encrusted jewellery.

Islamic Art & Patronage has been touring the world since the Kuwait National Museum was destroyed during the Gulf War. It is indemnified by the New Zealand Government.



Steel Helmet, Turkey, 15c.



Brass astrolabe, Iraq. Dated 927/28, this astrolabe was used for observing planetary movements and for navigation. It is the oldest astrolabe in existence.

SPECIAL OFFER

Save 25% and see both *Islamic Art & Patronage* and *Magnum® - Our Turning World*, for the joint price of adults \$12, concessions \$9.

Islamic art is renowned for its geometrical patterns drawn from nature, its colour and intricate detail. The art of the word is particularly strong in Islamic art, with decorated manuscripts and architectural inscriptions glorifying the word of God. Unlike Christian art, Islamic motifs were not restricted to religious environments, but appear as decorative features in everyday objects, from ceramic bowls to jewellery and carpets.

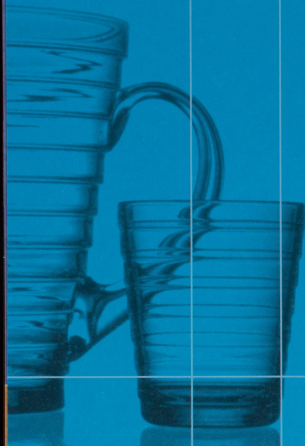


Tile with Epigraphic Blazon of Sultan Qaitbay, Egypt, late 15c.



Enameled glass bottle, Syria or Egypt, 14c.

ISLAMIC ART & PATRONAGE IS ON DISPLAY UNTIL 15 JUNE 2003



Finnish Design 125

Glass & Pitcher, 1932.
Designer: Aino Marsio-Aalto.

What do mobile phones, coffee pots and café chairs have in common? Some of the more famous varieties were designed in Finland.

Celebrating Finnish creativity is an exhibition of decorative and applied arts from the Finnish Society of Crafts and Design which comes to Auckland Museum in March.

Selected by contemporary Finnish designers to mark the Society's 125th anniversary, objects represented include classics of everyday design, from Alvo Aalto glassware to Nokia mobile phones.

"These are utility objects which have stood the test of time," says curator of applied arts, Louis Le Vaillant. "They are practical, functional and durable, but at the same time aesthetically crafted."

"When people see these works, there will be a sense of recognition even if they are not familiar with Finnish design. The simple and clean lines of these designs are classic; infused as they are in our own lifestyles."

Finnish Design 125 includes Teema dinnerware, Fiskars scissors, Aalto furniture and printed fabrics by textile designer, Marimekko.



Tableware 'Kilta'/'Teema',
1958. Designer: Kaj Franck.

ON DISPLAY FROM 29 MARCH - 18 MAY 2003

Produced by Design Forum Finland.

To coincide with their 50th anniversary, Magnum Photos presents *Our Turning World*, an exhibition capturing the complexity of human activity and the events which have shaped the world over the close of the last millennium.

On display from 18 April until 15 June, the show is a tribute to Magnum's founders - four of history's most respected photojournalists - and reflects the world's constantly changing socio-political climate.

Magnum was founded after World War II with the dual goal of recording the chaos wrought by war while ensuring the financial security of freelance photographers. The production of this all-encompassing show 50 years later, demonstrates the long-term success of these aims.

The exhibition is divided into three core sections, 'Enduring Rituals', 'Chronicle of Chaos' and 'The Aesthetics of Daily Life'. Each section broadens our awareness of war, religion, and historical change around the globe, and can be viewed for a special price with *Islamic Art & Patronage*.

See page 3 for details.

Our Turning World is supported by originating sponsors, Canon, Dai Nippon Publishing, Group CCF and Kodak.

magnum^o
OUR TURNING WORLD PHOTOGRAPHS 1989 - 1999

Fall of the Berlin Wall, West Germany 1989
© James Nachtwey/Magnum Photos

Adults \$6



ON DISPLAY FROM 18 APRIL - 15 JUNE 2003

ANZAC DAY 2003

In Remembrance



Enlist now, Victoria St - Queen St corner, Auckland, 1914

Every year, Auckland War Memorial Museum marks Anzac Day with a series of services and commemorative events.

This year, the Museum will open its war memorial galleries, *Scars on the Heart*, after the dawn service at 5.30am. The galleries will remain open until 8am.

A further commemorative service will be held at 11am and will be followed by bugler William Gunson, who will play a selection of wartime favourites and commemorative pieces in the foyer. *Gunner Inglorious*, a one-man play based on the autobiography of World War II veteran Jim Henderson, will be performed at 12.30pm.

Children are invited to the Discovery Centre from 12.30pm until 2pm where they can design their own medals or make a poppy. From 1pm to 4pm visitors can search the Museum's Cenotaph database or bring along records to be scanned into this online resource.

The Jubilate Chamber Choir will perform songs of remembrance at 2pm, and at 3pm the Museum will screen *Lest We Forget*, a programme of historic films of New Zealanders at war.

25 APRIL 2003

Land wars to world war

The Greg Moyle collection

Coinciding with this year's Anzac commemorations and on display until 30 April, is a selection of paintings and drawings from the collection of Greg Moyle.

The exhibition, which presents images of war, is strong in New Zealand work and includes paintings by officially commissioned war artists such as Peter McIntyre and Russell Clark.

Works by ordinary New Zealand soldiers are also on display.



Artificial moonlight, Peter McIntyre

ON DISPLAY UNTIL 30 APRIL 2003

Art 4 Kidz



In April, the Museum will open an exhibition on the art of children's books.

Art 4 Kidz, an exhibition in aid of the burns unit at Kidz First Children's Hospital, comes to the Museum from the private collection of Sunshine Books' publisher Wendy Pye.

The exhibition represents the best in children's books and includes images and text from authors and illustrators such as Margaret Mahey and Joy Cowley.

Wendy, who says the exhibition celebrates New Zealand's creative talent, has been collecting illustrations since the formation of Sunshine Books more than 20 years ago. This is the first time that works from this collection will be seen on public display.

"I wanted to acknowledge the huge contribution that New Zealand authors and illustrators have made to education around the world," explains Wendy, who is New Zealand's leading educational publisher.

"I also wanted to draw attention to what Kidz First's burns unit does for the children of New Zealand."

A silent auction will be held at the opening of *Art 4 Kidz* with the proceeds going towards the purchase of 'low air loss' mattresses for use at the burns unit. Low air loss mattresses aid healing by providing support without pressure-points.

For those interested in making a donation towards the mattresses, email northfields@bigfoot.com or telephone 09 530 8764.

ON DISPLAY FROM 12 APRIL - 13 JULY 2003

Time In MOTION

HISTORY ON FILM

Time in Motion, the Museum's winter series of historic films, commences in April with *Lest we Forget*, a commemorative programme scheduled to screen on Anzac Day.

Curated by the New Zealand Film Archive and hosted by the Museum on the last Sunday of every month, *Time in Motion* presents rare moments of New Zealand history on film.

Lest we Forget will feature footage from World War I, through to conflict in Korea, Malaya and Vietnam. The New Zealand home front will also be profiled.

Time in Motion runs until the end of September 2003. Themes for future screenings include Explorers and Adventurers, Family and Childhood, Transport, and Kiwi Holidays.

Lest we Forget screens at 3pm on Friday 25 April.

THE FILM ARCHIVE

WINTER SERIES

Kids' Museum Membership

Did you know that Auckland Museum has a great discovery club for kids, called the Dinomites Club?

If you know children who are interested in the world and how it works, and who enjoy the Museum's Discovery Centres, they may love to be part of our kids' club.

Dinomite members get a great range of benefits, which include a starter pack with certificate, club badge, a photo id card and other goodies. Members also receive a 10% discount at the Museum Store (plus other discounts), a cool fun-packed quarterly magazine and other great benefits.

Members also get prior notification of the Museum's holiday programmes and they even have special workshops just for them! Plus, Dinomites get their very own behind-the-scenes tours of the Museum. Dinomites also get discounts for birthday parties at the Discovery Centre.

The Dinomites Club is aimed at children aged six to 12 – it's a blast! Check out the website at: www.aucklandmuseum.com – and click on the Dinomite link at the bottom of the page.



Become a Dinomite!

Please send your payment, membership details and photo of the child/children to:
Dinomites Club, Auckland Museum, Private Bag 92018, Auckland, New Zealand.

NAME ONE:	D.O.B.:
NAME TWO:	D.O.B.:
NAME THREE:	D.O.B.:
ADDRESS:	
EMAIL:	

CHEQUE ENCLOSED: YES NO

Membership options: Please Tick

Single membership: \$15 per year

Family membership: \$30 per year for up to three children

What's up on the hill

MARCH

Sunday 16 March
Living Treasures Day – St Patrick's Celebrations

A day of themed events to celebrate all things Irish. Highlights include a live performance, children's activities, educational trails, dress-ups and Celtic body art!

Thursday 20 March
Why Us? Pests, Diseases and Auckland

Dr Gordon Hosking discusses pests and diseases affecting our environment, including why Auckland seems to get more than its share. Apcc Room, 7.30pm. A Museum Institute event; gold coin donation for non-members.

Sunday 23 March
Tiritiri Matangi Island Field Trip
Visit an island of breath-taking scenery and gloriously rich birdsong. Includes guided walk. Meet at the Museum at 8am. Institute members only.

Thursday 27 March
Continuing Terrorism
Political scientist, Dr Paul Buchanan discusses global terrorism; the situation today and what the future might hold. Apcc Room, 7.30pm. A Museum Institute event; gold coin donation for non-members.

APRIL

Sunday 6 April
Music in the Museum

A performance by the Philharmonic Society Orchestra at 3pm.

Friday 25 April
Anzac Day

A series of commemorative events organised in recognition of Anzac Day. See page 6 for details.

Sunday 20 April
Living Treasures Day – Islamic Art
A themed day of events celebrating the art of Islam. Talks, children's activities, websites and much more!

Wednesday 23 April
Museums of the future
Leading international museologist Dr George MacDonald, presents issues affecting Museum development globally. Dr MacDonald is the director of the Burke Museum, Seattle. Apcc Room, 7.30pm. \$15 including refreshments.

MAY

Every Wednesday in May
Pacific Origins

A four part lecture series on the origins of the Pacific. Topics are: 'From Asia to Aotearoa', 'The First Settlers', 'The Archaeology of Late Maori Settlement' and 'Polynesian Stories: The Kiore Story'. Call 09 306 7070 extn 883 for an enrolment form. \$15 per lecture, concessions for Institute members.

Sunday 4 May
Music in the Museum

Harpist Yi Jin's trio combo – a harp, violin and a cello – perform classical and easy listening music at 3pm.

Sunday 18 May
Living Treasures Day – Jewish Civilisation

A day celebrating Jewish culture. Highlights include music, storytelling, demonstrations of traditional ceremonies, talks, film screenings and more!

Sunday 25 May
Time in Motion – Explorers, Endurance, Endeavour

This non-fiction film series, curated by the New Zealand Film Archive, looks at great explorers and adventurers. Apcc Room, 3pm.

SCHOOL HOLIDAY PROGRAMME 12 - 27 APRIL 2009

HIGHLIGHTS

Wednesday 16 April and Wednesday 23 April
Wetasaurus appearances

Catch our Dinomite president Wetasaurus, he's part Weta, part Dinosaur! Wetasaurus will be visiting the Discovery Centre at 11am and 2pm.

Thursday 24 April
Talent Quest

A chance to show your talents, whether it be singing, dancing, juggling or whatever else takes your fancy. Call 09 306 7077 for your registration form and get practising! Talent quest starts at 10.30am.

WORKSHOPS

Bookings are essential. Please ring the Discovery Centre on 09 306 7070 extn 809 from 10 April. No bookings can be taken before this date. From 10am – 11am or 1pm – 2pm. \$6/\$5 for Dinomites.

Wednesday 16 April
Ancient Egypt Screenprinting
Bring a dark coloured t-shirt.

Thursday 17 April
Tag a T-shirt

Tuesday 22 April

Wind chimes with Venissa
Wednesday 23 April
Sand mandalas with Megan

10-MINUTE ACTIVITIES

Daily craft activities, which cost \$2 or \$1 for Dinomites. No need to book just pop into the Discovery Centres every day, from 10am – 12 noon and 1.30pm – 3.00pm.

Mondays and Thursdays

Marvellous marbling!
Celebrate Easter by making a special Easter card or learn how to marble an egg or paper.

Terrific tiles!
Create your own geometric picture inspired by Middle Eastern art.

Tuesdays and Sundays
Spin and spiral!
Use our new spiral wheels to make amazing art.

Calico and Crayon!
Make an artful crayon rubbing.

Saturdays and Wednesdays

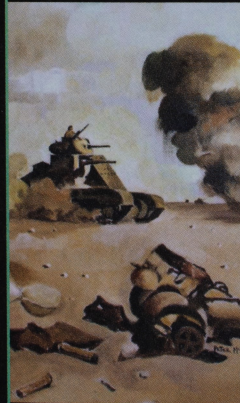
Block printed bandana!
Learn to block print and create a bandana you can wear!

Jute shoulder pouch!
Learn to sew a button and make a pouch from natural fibres.

Fridays

Badge making
Paper poppies
Learn how to make a paper poppy and why these flowers are special to Anzac day.

Exhibitions at a glance



Special Exhibitions

Islamic Art & Patronage: Treasures from Kuwait

18 April – 15 June 2003

Rare objects of exceptional beauty from the Kuwait National Museum. Created for shahs, princes and sultans between the 8th and 18th century, *Islamic Art & Patronage* presents gem-encrusted jewellery, rare ceramics, finely detailed miniatures and gold leaf folios from the Quran.

Magnum° – Our Turning World

18 April – 15 June 2003

Defining photographs from the closing decade of the last millennium, featuring work from some of the world's finest photojournalists.

Decorative Arts Gallery East & West

Finnish Design 125

29 March – 18 May 2003

Celebrating 125 years of Finnish design, from mobile phones to Alvo Aalto glassware. This exhibition defines the concept of Finnish design and presents a range of products chosen for their innovation, function, durability and aesthetic value.

Pictorial Gallery

The Greg Moyle Collection of New Zealand War Art

Until 30 April 2003

A selection of images by New Zealand war artists, from the private collection of Greg Moyle.

East West Gallery

Art 4 Kidz

12 April – 13 July 2003

A celebration of children's book illustration from the collection of educational publisher, Wendy Pye

On the Water 1: Under Pressure

Until 30 March 2003

Marking the America's Cup in Auckland, is an exhibition of maritime racing images from New Zealand Herald and the Museum's collections.