

MUSEUM



A Quarterly Guide to Exhibitions and Events
at Auckland War Memorial Museum

SUMMER 2004 ^{ISSUE} 97



QUARTERLY



December 2013 - 04

SUSTAINING SPONSOR



Auckland War Memorial Museum
Domain Drive Auckland Domain

Open 10am – 5pm daily
Except Christmas Day
and Anzac morning.

Admission is by donation.
\$5 is appreciated.
Children, of course, are free.
Charges may apply to
special exhibitions.

Private Bag 92018, Auckland
Infoline: 09 306 7067
Enquiries: 09 309 0443
Website: www.aucklandmuseum.com

Library: 09 306 7070 extn 687 or 686
Open Monday – Friday, 1pm – 5pm

Museum Store: 09 309 2580

Auckland Museum Institute:
09 306 7070 extn 883

Venue hire: 09 306 7056

Services to schools: 09 306 7040



Director's message

In 1876 the Museum, opened in 1852, moved into its first purpose-built building in Princes Street. Fifty-three years later it moved again – this time to the current building in the Domain. And thirty-one years after that, the building was extended with the addition of the semicircular southern end. Now, a further forty-three years later, we are underway with the biggest addition since the move in 1929 (it adds 60 percent more space). The Stage II or "Grand Atrium" project is underway.

The vision formed from 1995 to 2000, the project submitted in 2000 for Government funding support, and, a year later, for resource consent, has begun. At its December meeting, the Museum Trust Board approved commencement of \$46 million worth of the total \$53 million undertaking. The initial tranche of work will provide for completion of the courtyard infill building, fit-out of two basement, ground and first floor levels, and construction of the two storey underground car park. Only the fit-out of curatorial offices, the theatre and the events centre remain to be committed to. What a wonderful way to celebrate Christmas, conclude a successful year, and launch a new one in just a few weeks time. It is truly a moment in time!

The next two and a bit years until we open these first works will be a busy time. Fortunately there will be no adverse public impact as there was during Stage I, and the Museum's programmes will continue uninterrupted. I want to thank all the many people who have put their weight behind this project; the Government, our charitable, corporate and private benefactors, the public at large, our consultants, staff, Taumata-a-Iwi and last, but not least, the Trust Board. We still have funds to raise and next year will be critical in that process, but we have begun work on one of the most important developments in the life of this remarkable institution.

New Museum highlights tour launched

Auckland Museum is now offering a one-hour highlights tour. The service, which was launched in December, provides visitors with an overview of the Museum's history and its must-see objects. Departing at 10.30am daily, the tour costs \$10 for adults and \$5 for children and includes entry to the Museum.

Groundbreaking DNA gallery opened

A new exhibition on the history and science of DNA was opened in November by Emeritus Professor George Petersen, the founding-father of DNA research in New Zealand. The exhibition, which explores the ethical challenges and scientific advances made through DNA technology, is the only exhibit in the country marking the 50th anniversary of DNA.

news in brief



Summer shopping at the Museum Store

If you're looking for a special gift this holiday season, visit the Museum Store. With a reputation for the finest handcrafted gifts, the Store offers a worldwide shipping and delivery service for those with relatives overseas. These hand-printed cushion covers (above) retail for \$45 – \$49.

Auckland cultural icons form new venture

Auckland Museum, Auckland Art Gallery and Auckland Zoo have teamed up with Corporate Cabs to provide a new cultural tourism sightseeing package. Called '3 Icons – 3 Experiences', the package provides visitors with a tour around all three sites. Priced at \$89 per person, visitors experience Maori and Pacific culture, view valuable historic paintings and encounter native bush along with kiwi and tuataras, all courtesy of an air-conditioned Corporate Cab. For more information contact Corporate Cabs on 09 377 0773.

Explore the art and magic of puppetry, from the traditional satire of Punch and Judy to the pioneers of New Zealand puppetry, when you visit *The Puppet Show* at Auckland Museum this summer.

Opening on Boxing Day, this family show will offer daily performances with puppet shows running throughout the holiday period.

On display will be a broad range of puppets from the Museum's collection including the Goodwin Theatre marionettes – puppets from one of New Zealand's earliest and most successful puppet troupes – the puppets of sculptor Greer Twiss, who began making puppets at the age of four, and a selection of ethnic puppets.

Puppet Show curator Rose Young says the exhibition will delight visitors young and old because it celebrates a form of entertainment which traverses generations and cultures. "Historically, puppetry is represented in most cultures around the world. In New Zealand, it had a strong following with the Goodwin Marionette Theatre travelling over 12,000 miles and performing to around 120,000 people during the 1940s alone.

In the days before television, community halls were filled to the brim with audiences keen to experience puppet theatre."

Performance highlights will include international puppeteer Jonathon Acorn, whose cast of characters include Bubbles the Fish and Esmeralda the Witch, and shadow puppetry workshops with Katie Parker whose work received critical acclaim in the play, *the Butcher's Daughter*.

There will also be the opportunity for kids to craft their own puppets in a series of ten-minute activities and puppet workshops.

For a full public programme, see page 4.



THE PUPPET SHOW

Museum admission is by donation; \$5 per adult is suggested, children are free. Some additional charges apply for workshop activities.

OPENS 26 DECEMBER – 8 FEBRUARY 2004

THE PUPPET SHOW

Keep the kids entertained these holidays with our daily puppet performances and workshops.

PERFORMANCES

The Blue Shoe Show
by Rose Beauchamp

27 and 28 Dec at 3pm

Bj the Ventriloquist

28 Dec – 10.15am, 11.15am and 12.15pm | 5, 8, 11, 13, 16, 17, 20, 22 Jan at 11am, 1pm, 3pm | 24 Jan at 11.45am, 1.45pm, 3.45pm

The Adventures of the Three Little Pigs

29, 30, 31 Dec at 11am – 1pm and 2pm – 4pm | 2, 3 Jan at 11am – 1pm and 2pm – 4pm

Lorna Maa Appearances

3, 4, 10, 11, 17, 18, 24, 25, 31 Jan and 7, 8 Feb, 11am – 4pm

Oly Puppets Suitcase Extravaganza

4 Jan at 11am, 1pm and 3pm | 5 Jan at 2pm, and 3.15pm | 18 Jan at 11.45pm, 1.45pm and 3.45pm | 26 Jan at 11am, 1pm and 3pm | 1 Feb at 11.45am, 1pm and 3pm | 6 Feb at 11am, 1pm and 3pm

The Sausage King with Jonathon Acorn

5 Jan at 11.45am, 1.45pm and 3.45pm | 9, 12, 16, 19 Jan at 11am, 1pm and 3pm | 23 Jan at 11am, 1pm and 3pm | 26 Jan at 11.45am, 1.45pm and 3.45pm

Puppetual E.motions with Jonathon Acorn

6 Jan at 11.45pm, 2.30pm and 3.45pm | 13 Jan at 11.45am, 1.45pm and 3.45pm | 20 Jan at 11am, 1pm and 3pm

Marionette Puppetry for Kids with John Rew

7, 10, 14, 17, 18, 21, 24, 26 January at 11am, 1pm and 3pm

Punch and Judy with Zero

7, 10, 11, 14, 17, 21, 23, 25 Jan at 11.45am, 1.45pm and 3.45pm | 31 Jan at 10.30am, 11.45am and 1.15pm

Anne Forbes and Tim Denton in "Puppet Power!"

31 Jan and 1 Feb at 11am and 2pm

Bobby the Police Dog

16 Jan at 1.30pm

10-MINUTE ACTIVITIES

Make your own puppet at one of our Discovery Centre workshops; 10am – 12 noon and 1.30pm – 3pm. \$2 or \$1 for Dinomite members.

Animal Finger Puppets

26 Dec
2, 9, 16 and 23 Jan

Snake Puppets

28, 31 Dec
4, 11, 14, 18, 21 and 25 Jan

Dancing Dragons and Butterfly Finger Puppets

29 Dec and 1, 5, 8, 12, 15, 19, 22 and 26 Jan with an extra session of Dancing Dragons on 1 Feb

Incy Wincy Spider Puppets

21, 30 Dec and 3, 6, 10, 13, 17, 20, 24 Jan

WORKSHOPS

Learn the art of puppetry with our Puppet Show performers. \$25 per child or \$20 for Dinomite members.

Oly Smart's Object Theatre

6 and 19 Jan 2pm – 4pm
19 Jan 10am – 12noon

Marionettes with John Rew

9, 12 and 16 Jan 10am – 11.30am and 1pm – 2.30pm

Shadow Puppets with Katie Parker

17, 18, 22, 24, 26 and 31 Jan 10am – 11.30am and 1pm – 2.30pm

TALKS

The Healing of Land and People in the East Asian and Maori Puppetry Tradition with Rose Beauchamp

27 Dec, 1pm

Maori Puppetry with Bernard Makaore

28 Dec, 1pm

Anne Forbes Floor Talk

31 Jan, 3pm

Greer Twiss Floor Talk

8 Feb, 3pm

SPECIAL EVENTS

Erth – People Become Puppets and Gargoyles Come to Life!

8, 9, 10 and 11 Jan

Puppet Show Finale and Forum

7 and 8 Feb

THE ARCHITECT OF THE TOWER:

Roy A Lippincott's design for the University of Auckland Arts Building, 1921-1926

The architecture and interior design of American-born architect, Roy Alstan Lippincott, are to be profiled in a new exhibition tracing the origins of one of Auckland's landmark buildings – The University of Auckland's Arts Building, now known affectionately as the Clock Tower.

Lippincott, who was resident in New Zealand between 1921 and 1939, crafted a number of the University's significant buildings, including the custodian's cottage and the Biology Building. His most significant building, the Clock Tower, was commissioned as the result of an international competition for the University's first purpose – built building on Princes Street.

Inspired by Lippincott's association with Frank Lloyd Wright and the Prairie School in Chicago, his work in the practice of Walter Burley Griffin, the architect who designed Canberra as well as Tom Tower in Oxford, the Clock Tower helped define the University's architectural spirit, combining traditional architectural elements with local decorative motifs; flax flowers, ponga fronds and kaka can be found in the stone detailing.

Lippincott: the Architect of the Tower is co-curated by Jane Wild from the University of Auckland Library and Museum curator Louis Le Vaillant. The original architectural drawings are now housed in the Architecture Archive at The University of Auckland. The exhibition is generously supported by AGM Publishing, Auckland.



OPENS 26 DECEMBER – 8 FEBRUARY 2004

ON DISPLAY FROM 5 FEBRUARY – 9 MAY 2004

HARD HAT

A REGULAR UPDATE ON THE MUSEUM'S GRAND ATRIUM PROJECT

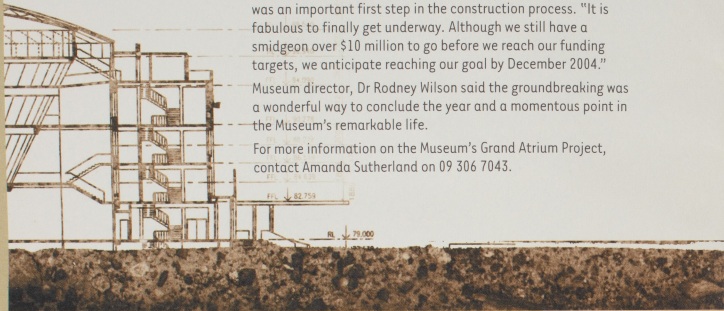
A groundbreaking ceremony was conducted in December to celebrate commencement of the Museum's multimillion-dollar Grand Atrium building.

The ceremony, which occurred on 18 December, was attended by ongoing supporters of the project, including associate minister for arts, heritage and culture, the Honourable Judith Tizard and mayors John Banks and Sir Barry Curtis.

Development manager, Amanda Sutherland said the ceremony was an important first step in the construction process. "It is fabulous to finally get underway. Although we still have a smidgeon over \$10 million to go before we reach our funding targets, we anticipate reaching our goal by December 2004."

Museum director, Dr Rodney Wilson said the groundbreaking was a wonderful way to conclude the year and a momentous point in the Museum's remarkable life.

For more information on the Museum's Grand Atrium Project, contact Amanda Sutherland on 09 306 7043.



Les objets du desir

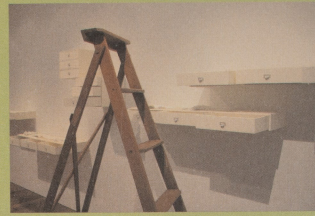
Locks and braids of hair pass social commentary on love, betrayal, voyeurism and beauty in this exhibition from Auckland jewellery-maker Ilse-Marie Erl.

Located in the Decorative Arts Central Gallery, the exhibition explores the meaning and symbolism of hair as both a memento and as jewellery.

The concept for it came about, says Erl, after a friend gave her a braid of hair which had been sent as a parting gift by a lover ending an acrimonious relationship. From this central piece, a collection grew with Erl investigating the intimate relationship between hair as a love token and as body adornment.

Les objets du desir contains images which may not be suitable for younger viewers.

ON DISPLAY FROM 30 JANUARY – 25 APRIL 2004



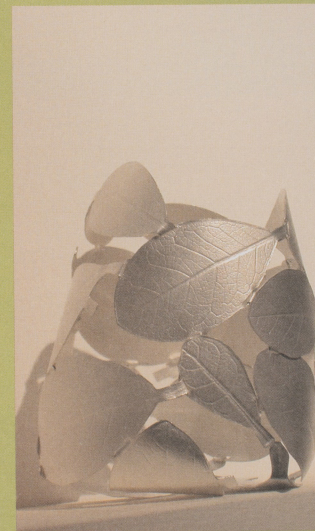
Love and remembrance inform an installation of exquisitely crafted jewellery from young New Zealand artist, Kirsten Haydon.

Based on the recollections of her grandfather's war-time experiences and her own memories of her beloved Poppa, *In the Drawer* gives intangible memories permanence, and recognises the importance of respecting and continuing the stories of our elders.

"My hope through this exhibition," explains Kirsten, "is to make people more aware of the fragility of the elderly and the importance of the stories they have to tell."



In the drawer



Kirsten, who is a fine arts graduate from Melbourne's RMIT University, creates delicate pieces symbolic of her Poppa's life experiences, from tiny silver coracles inspired by the boats he used to bridge Italy's river Po during World War II, to a life-size glasshouse based on the greenhouses in which he grew tomatoes and grapes during his youth in Auckland. Half open drawers hold tiny iconic mementos; miniature red crosses, silver laurel leaves and tiny propellers, accompanied by images created from family letters and photographs.

"From talking to my Poppa - who was the narrator in my family - about his souvenirs, I have used everyday objects that have been collected and treasured by him, to inform the narratives," says Kirsten. "I hope that the community engages with these objects as souvenirs and sees that to look forward, we have to look back."

In the Drawer was first exhibited at Craft Victoria, Melbourne in July 2002 and is shown in Auckland in collaboration with OBJECTSPACE. The exhibition will be on display in The Decorative Arts West Gallery.

ON DISPLAY FROM 5 FEBRUARY – 9 MAY 2004

Kids' Museum Membership

Did you know that Auckland Museum has a great discovery club for kids, called the Dinomites Club?

If you know children who are interested in the world and how it works, and who enjoy the Museum's Discovery Centres, they may love to be part of our kids' club.

Dinomite members get a great range of benefits, which include a starter pack with certificate, club badge, a photo id card and other goodies. Members also receive a 10% discount at the Museum Store (plus other discounts), a cool fun-packed quarterly magazine and other great benefits.

Members also get prior notification of the Museum's holiday programmes and they even have special workshops just for them! Plus, Dinomites get their very own behind-the-scenes tours of the Museum. Dinomites also get discounts for birthday parties at the Discovery Centre.

The Dinomites Club is aimed at children aged six to 12 - it's a blast! Check out the website at: www.aucklandmuseum.com - and click on the Dinomite link at the bottom of the page.



Become a Dinomite!

Please send your payment, membership details and photo of the child/children to:
Dinomites Club, Auckland Museum, Private Bag 92018, Auckland, New Zealand.

NAME ONE:	D.O.B.:
NAME TWO:	D.O.B.:
NAME THREE:	D.O.B.:
ADDRESS:	
EMAIL:	

CHEQUE ENCLOSED: YES NO

Membership options: Please Tick
 Single membership: \$20 per year
 Family membership: \$40 per year for up to three children

What's up on the hill

JANUARY

SUNDAY 11 JANUARY MUSIC IN THE MUSEUM

Ionosphere perform their unique fusion of jazz, tribal drums and didgeridoo. Oceans Gallery, 3pm.

SUNDAY 18 JANUARY LIVING TREASURES DAY FESTIVAL OF TIBET

Marking New Zealand's Festival of Tibet is a day featuring visiting Tibetan artist Karma Phuntsok and musician Tenzin Choegyel.

FEBRUARY

SUNDAY 1 FEBRUARY LIVING TREASURES DAY CHINESE NEW YEAR

Celebrate the Chinese New Year with activities and performances including the Cantonese Opera Society and a special appearance by a giant Chinese puppet!

SUNDAY 1 FEBRUARY MUSIC IN THE MUSEUM

Stephanie Wenjing Sun plays the "Gu Zheng", a traditional instrument from ancient China. Oceans Gallery, 2pm.

THURSDAY 11 FEBRUARY ALEXANDER, 10TH DUKE OF HAMILTON

British art historian Godfrey Evans examines one of the most remarkable collectors of all time and the world-famous Hamilton Palace collection. Maniaia Room, 7.30pm. Entry via East Door.

THURSDAY 19 FEBRUARY THE LANGUAGE OF FLOWERS

Artist Rose Kerr takes a look at how flowers are used to express thought and feeling in ceramic art and design. Maniaia Room, 7.30pm. Entry via East Door.

MARCH

SUNDAY 7 - SUNDAY 14 MARCH SEAWEEK 2004

Organised in collaboration with New Zealand Underwater, Seawek is a week-long celebration of all things oceanic and includes marine-themed activities for kids, expert lectures, educational trails and performances.

SUNDAY 7 MARCH MUSIC IN THE MUSEUM

A performance by Niuean dance group Tau Fuata Niue. Museum Foyer, 3pm.

WEDNESDAY 10 MARCH LITTLE DARLINGS AND LITTLE TERRORS - INSECTS AND THEIR RELATIVES

The first in a four-part series on the changing face of Auckland's biodiversity with Auckland Museum entomologist, John Early. Maniaia Room, 7.30pm. Entry via East Door.

SUNDAY 14 MARCH LIVING TREASURES DAY SEAWEEK

A day of oceanic activities rounding off Seawek.

WEDNESDAY 17 MARCH AUCKLAND'S WEEDS AND THEIR IMPACT

The second in our series on the changing face of Auckland's biodiversity with Museum botanist, Ewen Cameron. Maniaia Room, 7.30pm. Entry via East Door.

WEDNESDAY 24 MARCH IS AUCKLAND'S MARINE ENVIRONMENT UNDER THREAT?

NiWA's Simon Thrush, asks whether Auckland's coastline is under threat and if so, do we really care? Maniaia Room, 7.30pm. Entry via East Door.

SUNDAY 28 MARCH TIME IN MOTION FOUNDATION, FORM, FUNCTION: NZ ARCHITECTURE

Coinciding with our exhibition on the architecture of Ray Lippincott is this film screening from the New Zealand Film Archive. Maniaia Room, 3pm.

WEDNESDAY 31 MARCH CONSERVATION, RESTORATION AND THE FUTURE

The last in our series on the changing face of Auckland's biodiversity with University of Auckland environmental scientist, John Craig. Maniaia Room, 7.30pm. Entry via East Door.

SCHOOL HOLIDAY PROGRAMME 16 DECEMBER - 1 FEBRUARY 2004

HIGHLIGHTS

For more information about our holiday programme phone the holiday hotline on 09 306 7032 or check out our website.

For community holiday programme group enquiries and bookings phone Megan on 09 306 7070 extn 808.

See page 4 for details of the fun activities for kids surrounding *The Puppet Show*.

WETASAUROS APPEARANCES

Come and meet Wetasaurus Rex our Dinomite club president. He'll be appearing throughout the summer holidays, so look out for him when you visit!

10-MINUTE ACTIVITIES

Suitable for all ages. No booking required. Activities cost \$2 (\$1 for Dinomites). Daily from 10am - 12noon and 1.30pm - 3pm.

16 DECEMBER - 24 DECEMBER

Make some unique Christmas decorations in the Discovery Centre!

WEDNESDAY AND SATURDAY CHRISTMAS TEA LIGHTS

MONDAY AND FRIDAY SWEET TREAT CHRISTMAS TREES

THURSDAY SNOWFLAKE CHRISTMAS CARDS

TUESDAYS AND SUNDAY POHUTUKAWA FAIRIES

26 DECEMBER - 26 JANUARY

MONDAYS AND THURSDAYS DANCING DRAGONS AND BUTTERFLY FINGER PUPPETS

WEDNESDAYS AND SUNDAYS BADGE-MAKING AND SNAKE PUPPETS

FRIDAYS MOSAIC PICTURE FRAMES AND ANIMAL FINGER PUPPETS

TUESDAYS AND SATURDAYS SPIN & SPIRAL ART AND INCY WINCY SPIDER

WORKSHOPS

DINOMITE ONLY \$5 WORKSHOPS

FUNKY BEACHWEAR

Hit the beach with a t-shirt screenprinted with your own design. Bring a plain white t-shirt. Bookings essential, phone 09 306 7077.

JUNIOR: AGED 4-6 YEARS

TUESDAY 6 JANUARY, 10AM - 11.30AM

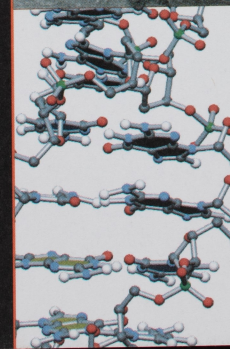
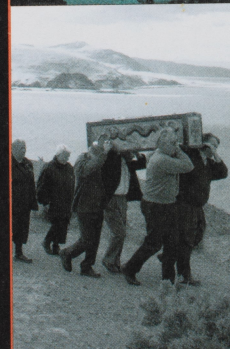
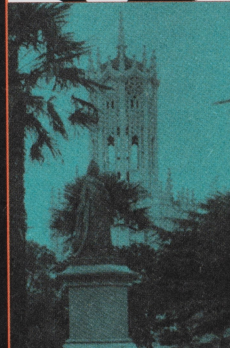
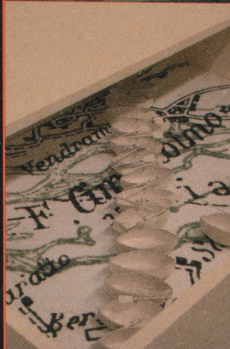
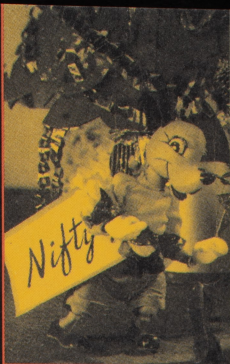
TUESDAY 13 JANUARY, 10AM - 11.30AM

SENIOR: AGED 7-12 YEARS

TUESDAY 6 JANUARY, 1PM - 2.30PM

TUESDAY 13 JANUARY, 1PM - 2.30PM

Exhibitions at a glance



Special Exhibitions

The Puppet Show

26 DECEMBER – 8 FEBRUARY 2004

Explore the art and magic of puppetry, from the traditional satire of Punch and Judy, to the pioneers of New Zealand puppet theatre. Puppet shows and workshops daily.

Decorative Arts Gallery West

In the drawer

5 FEBRUARY – 9 MAY 2004

An installation exploring memory and mementos from young contemporary jewellery-maker, Kirsten Haydon.

Frank Carpay at Crown Lynn and Beyond

UNTIL 18 JANUARY 2004

An exhibition exploring the work of Crown Lynn ceramic artist, Frank Carpay. From drawings and ceramics, to textiles and photographs.

Decorative Arts Gallery East

The Architect of the Tower: Roy A Lippincott

5 FEBRUARY – 9 MAY 2004

The architecture and interior design of Roy – Alstan Lippincott for the University of Auckland.

Pompallier Te Hokinga Mai - The Journey Home

UNTIL 18 JANUARY 2004

A photographic exhibition charting the journey home to New Zealand of the remains of Bishop Pompallier.

Decorative Arts Central

Les objets du desir

30 JANUARY – 25 APRIL 2004

Locks of hair pass commentary on love, betrayal, voyeurism and beauty in this small exhibition from jewellery-maker Ilse-Marie Erl.

Human Impacts Gallery

DNA – The X Factor

NEW PERMANENT EXHIBITION NOW OPEN

An exhibition exploring the history and science of DNA.