

MUSEUM



WINTER 2003

A Quarterly Guide to Exhibitions and Events
at Auckland War Memorial Museum

ISSUE **95**



QUARTERLY



Director's message

SUSTAINING SPONSOR



Auckland War Memorial Museum
Domain Drive Auckland Domain

Open 10am – 5pm daily
Except Christmas Day
and Anzac morning.

Admission is by donation.
\$5 is appreciated.
Children, of course, are free.
Charges may apply to
special exhibitions.

Private Bag 92018, Auckland
Infoline: 09 306 7067
Enquiries: 09 309 0443
Website: www.aucklandmuseum.com

Library: 09 306 7070 extn 687 or 686
Open Monday – Friday, 1pm – 5pm

Museum Store: 09 309 2580

Auckland Museum Institute:
09 306 7070 extn 883

Venue hire: 09 306 7056

Services to schools: 09 306 7040



As the cold weather settles in and the days become shorter, there is no better time to visit your Museum.

This winter we have a diverse range of exhibitions on display, from a striking Pre-Columbian exhibition which profiles the gold, power and ritual of an ancient civilisation, to an exhibition of innovative furniture design and a range of photographic exhibitions from our own collections.

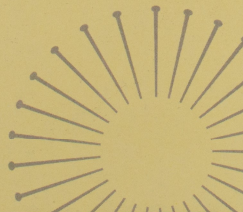
The school holidays will be a busy time and for those of you with young families to entertain, let me recommend our full programme of children's activities in the Discovery Centres. We have quizzes, trails and workshops which will entertain and enlighten.

This winter may very well be the last that you will need to brave the elements to visit Auckland Museum.

Construction of our new underground car park begins in a matter of months, providing sheltered access to the Museum from the rear of the building. This is just the first step of many exciting changes underway this year as we embark on our Grand Atrium building within the Museum's southern courtyard.

Already we have established a fundraising advisory board to help us raise the balance of funds required to bring state of the art contemporary facilities to your Museum. I look forward to sharing their successes with you over the coming months, and in the meantime, encourage you and your families to spend some fun time with us, here on the hill this winter.

Dr T.L. Rodney Wilson
Director



Heavenly handbags from the Museum Store

The Museum Store is now offering a range of quality handbags. The bags, which retail from \$250, come in a range of sizes and styles, and are made from local materials including possum fur, puaa, mother of pearl and calf skin.



news in brief

New Weird & Wonderful takes architecture award

The Institute of Architecture has recognised the Museum's refurbished *Weird & Wonderful* discovery centre in its annual awards. Pearson & Associates' redesign of this much-loved educational space was awarded a national design award alongside both commercial and residential buildings.



Mystery portraits seek identification

Two portraits of unknown Maori by artist Louis Steele, are to go on display in the Museum. The portraits, which belong to the Ministry of Foreign Affairs and Trade, have been returned from the New Zealand Embassy in Washington in a bid to identify the sitters so that the works can be repatriated to a museum or gallery close to their home. Visitors to the Museum who recognise the sitters should contact Gordon Maitland on [gmaitland@aucklandmuseum.com](mailto:gmailto:gmaitland@aucklandmuseum.com) or telephone 09 309 0443.



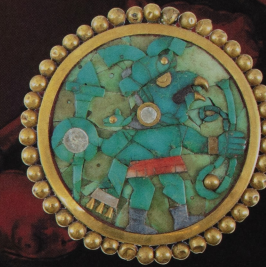
Pacific Resource Centre to open in July

A resource centre devoted to the Museum's Maori and Pacific collections will open on 19 July. The Centre, which has been established with the aid of funding from the New Zealand Lottery Grants Board, will be based in the Museum's *Maori Gallery* for the purposes of research and education. Reference material including CDs, DVDs, books and computer workstations will be available for individual and classroom learning.

Treasures of Ancient Peru

gold & Sacrifice

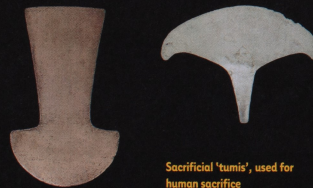
Gold and Turquoise earring, 300 AD



Adults \$12, Concessions \$9



A supernatural tale of the Incas and their ancestors opens at Auckland Museum next month.



Sacrificial 'tumis', used for human sacrifice

Gold & Sacrifice: Treasures of Ancient Peru, explores the power and ritual of ancient Pre-Columbian cultures.

Ritual battle, human sacrifice, the supernatural and the afterlife are just some of the themes examined in *Gold & Sacrifice*, which comes to Auckland Museum from Peru's Museo Rafael Larco Herrera.

Known for their pyramid temples, their sacrificial rites and their extensive use of gold, these Pre-Columbian people were ruled by lords, emperors and priests - gods on earth who maintained widespread trade networks and a social order dominated by human sacrifice. It was a civilisation which spanned over a thousand years and in which warriors defeated in ritualised battle, had their throats slit in temple ceremonies and their blood drunk by the ruler in their role as a living god.

Gold & Sacrifice will see striking remnants of this complex civilisation on display, from sacrificial blades and goblets to elaborate gold jewellery worn by priests and finely decorated ceramics depicting half-human, half-animal spirits and the sacrifice ceremony itself.

Gold & Sacrifice is indemnified by the New Zealand Government and is generously supported by sponsors Walker & Hall and LanChile.



Gold death mask, 300 AD

LANCHILE
The Official Airline

WALKER & HALL
NEW MARKET

SPECIAL OFFERS

Have your chance to win one of five gold bangles from Walker & Hall valued at \$1000 each, when you visit *Gold & Sacrifice: Treasures of Ancient Peru*.

Bring in this coupon with you and receive a companion adult ticket at half price.

Name:

Address:

Email:

How did you get your copy of MQ?

We may contact you from time to time with other Museum offers and updates. If you do not wish to receive this information, please tick this box

GOLD & SACRIFICE IS ON DISPLAY FROM 11 JULY - 21 SEPTEMBER 2003

Folio from a Qur'an manuscript,
Tunisia, 10th Century



Defining images from some of the world's finest photojournalists are on display alongside a unique exhibition of Islamic art until 15 June.

The Art of Islam: Treasures from Kuwait offers a window into a culture which few New Zealanders have experienced first hand.

Considered one of the finest collections of its kind in the world, *The Art of Islam* presents rare objects of beauty spanning a thousand years and a geographical sweep stretching from Spain to Iraq to India.

The Art of Islam comes from the al-Sabah Collection, Dar al-thar al-Islamiyyah, Kuwait National Museum and is indemnified by the New Zealand Government.

The Art of Islam: Adults \$10, concessions \$7.50.

Treasures from Kuwait The Art of Islam

SPECIAL OFFER

Save 25% and see both *Islamic Art & Patronage* and *Magnum® - Our Turning World*, for the joint price of adults \$12, concessions \$9.

Gulf War. Burgan Oil Fields. Kuwait. 1991.
Bruno Barbey/Magnum Photos



Magnum® - Our Turning World is a photographic exhibition capturing defining moments of history over the close of the last millennium.

War, religion and historical change are looked at through the lenses of some of Magnum's best photographers in three core sections, 'Enduring Rituals', 'Chronicle of Chaos' and 'The Aesthetics of Daily Life'.

World events featured include the first Gulf War, Tiananmen Square, the fall of the Berlin wall, the effects of the Chernobyl disaster and war in Chechnya.

Our Turning World is supported by originating sponsors, Canon, Dai Nippon Publishing, Group CCF and Kodak.

Magnum®: Adults \$6, concessions \$4.50.

OUR TURNING WORLD
PHOTOGRAPHS 1989 - 1999

magnum®

ON DISPLAY UNTIL 15 JUNE 2003

Metaform 03: Sustainable Beauty

Sustainable development is the message behind an exhibition of innovative furniture design at Auckland Museum this month.

Metaform 03, an exhibition of finalists from a design competition using 'Green Seal' – a new cellulose hardened wood product developed and commercialised here in New Zealand by Forest Research, Carter Holt Harvey and Pacific Hardwood – brings together design and industry to promote greater awareness of environmental sustainability.

Green Seal has the beauty and performance of a hardwood, but comes from sustainably managed forests.

Metaform entrants include design and furniture students along with professional architects and designers.

"As designers and craftspeople," says competition organiser, Timothy Allan, "we need to help the process of environmental renewal by choosing materials that are environmentally friendly."

Finalists' work will be on display in the Decorative Arts galleries until 7 September.

Metaform is supported by Carter Holt Harvey, AGM Publishing and Locus Research, Design and Development.



Bask (bath): Designer Gavin Klocck

ON DISPLAY UNTIL 7 SEPTEMBER 2003

PRODESIGN

CarterHoltHarvey

locusresearch
Design & Development

5

Three cameras in New Guinea



Tattooed girls, ready for marriage, Wanigela Village, Papua and New Guinea. Photograph: Percy Money, c.1905

Between 1900 and 1928, three British missionaries at work in Papua and New Guinea, recorded the world around them.

James Adams Wilkes, Diamond Jenness and Percy Money never met, but their photographs ended up in the collection of Auckland Museum and 100 years later, they have been brought to light in an exhibition which provides an historic snapshot of a lost colonial world.

ON DISPLAY UNTIL 10 AUGUST 2003

Art4Kidz THE ART OF CHILDREN'S BOOK ILLUSTRATION



'I Have a Home', artist: Astid Matijasevic, author: Judy Ling

Art 4 Kidz, an exhibition in aid of the burns unit at Kidz First Children's Hospital, comes to the Museum from the private collection of Sunshine Books' publisher, Wendy Pye.

The exhibition represents the best in children's books and includes images and text from authors and illustrators such as Margaret Mahey and Joy Cowley. This is the first time that works from this collection have been seen on public display.

To make a donation towards the burns unit, email northfields@bigfoot.com or telephone 09 530 8764.

ON DISPLAY UNTIL 13 JULY 2003

Get on the Trail



With July school holidays fast approaching, the Children's Discovery Centres have come up trumps with an entertaining array of activities to keep the kids amused.

Coinciding with the Museum's exhibition *Gold & Sacrifice: Treasures of Ancient Peru*, the Centres have crafted an intriguing South American trail with a prize for every child who correctly completes the task!

Find out what New Zealand and South America have in common; where kumara came from and where else in the world you can find a weta. The *Path to Peru Trail* runs every day during the holidays. Just pick up a trail from the information desk or the Discovery Centre.

On Friday 11 and Friday 18 July join storyteller extraordinaire Jo Lees, and find out what it was like to be an Incan!

Topping the holiday fun is a special *Kids' Quiz Quest* on Wednesday 16 July. Teams of two aged between eight and 12 can register to be part of this general knowledge knockout tournament. Be the first to cross the Discovery Centres' special 'Bee Board' by correctly answering the questions, and be in to win great prizes! Games for younger kids will be on hand between rounds.

Kids must register for the *Quiz Quest* by phoning 09 306 7077.

For more information on the Museum's diverse school holiday programme, visit our website or phone our infoline on 09 306 7067.

to Holiday Fun!

SCHOOL HOLIDAY PROGRAMME

Auckland Museum Institute

The Auckland Museum Institute is a membership organisation and learned society which supports Auckland Museum by raising funds, arranging lectures, directing field trips, encouraging research and hosting social occasions. To join the Institute and take advantage of the special events and activities organised for members, telephone Margaret Spencer on 09 309 0443 extn 883, or complete the membership form below.

INSTITUTE EVENTS

Wednesday 16 July

Royal Society of New Zealand's Rutherford Lecture - Blood Flow in Giraffes and People

What is the pulse? How does inflating a cuff around the arm enable blood pressure to be measured? Why is a giraffe's heart over two percent of its body weight when a human's is only 0.5 percent?

Physiologist, Professor Tim Pedley, answers these questions and more. Manaia Room, 5.30pm.

Thursday 21 August

The Lord of the Tree Rings - How Kauri Trees Reveal Climate Change

Dr Gretel Boswijk and Andrew Lorrey present a joint lecture with the Royal New Zealand Institute of

Horticulture. Unravel the intertwined history of Pacific climate change, regional geologic activity and more recently, human induced changes to the environment, through the tree ring records of the kauri tree. Manaia Room, 7.30pm.

Thursday 28 August

Centenary of Flight - Rebuilding the Pearce Engine

Manaia Room, 7.30pm.

Sunday 31 August

MOTAT Family Field Trip

Meet at the Motat carpark at 10am.

What's up on the hill

JUNE

Sunday 1 June

Music in the Museum

Senior students from The University of Auckland's School of Music perform a concert of solos and chamber music. Programme includes Bach, Telemann and Mozart, a string quartet by Haydn, and an original student composition. Manaia Room, 3pm.

Sunday 22 June

Living Treasures Day - Matariki

The Museum celebrates the Maori New Year with a day of events including talks, educational trails, performances, children's activities and much more.

Sunday 29 June

Time in Motion - That's Entertainment

Curated by the New Zealand Film Archive and hosted by the Museum, *Time in Motion* provides a rare glimpse of New Zealand history on film. This month looks at Aucklanders at play. Subjects include an early Easter Show, ballroom dancing and the heyday of the mighty Civic theatre. Manaia Room, 3pm.

JULY

Saturday 12 July

Music in the Museum

Peruvian band *Tumi* perform traditional songs from their homeland. Manaia Room, 3pm.

Sunday 13 July

Living Treasures Day - Bastille Day

A day celebrating French culture. Talks, children's activities, websites and much more!

Sunday 27 July

Time in Motion - When We Were Young

July's film screening takes a look back at childhood, including Karitane and Plunket nurses, early school days, fun fairs, and a film about the 'largest state house in the Dominion', which housed a family of twelve. Manaia Room, 3pm.

AUGUST

Sunday 3 August

Music in the Museum

A performance from the Ross Welsh Choir singing four-part harmonies and traditional Welsh and contemporary song. Manaia Room, 3pm.

Sunday 17 August

Living Treasures Day - Treasures of Peru

A day of events celebrating the Museum's special exhibition, *Gold & Sacrifice: Treasures of Ancient Peru*.

Sunday 31 August

Time in Motion - Travelling Through Time

This month's *Time in Motion* screening presents planes, trains and automobiles... and caravans, ships, motorbikes, jet boats and all the transport that has kept the nation moving over the years. Manaia Room, 3pm.

SCHOOL HOLIDAY PROGRAMME 5 - 20 JULY 2003

Become an Institute Member

Please send your payment and membership details to: **The Administrator, Auckland Museum Institute, Private Bag 92018, Auckland**

MR/MRS/MISS/MS:	
ADDRESS:	
TELEPHONE:	
EMAIL:	
CREDIT CARD TYPE:	EXP DATE: __ / __
CARDHOLDER NAME:	
CREDIT CARD NUMBER:	<input type="text"/>
CHEQUE ENCLOSED:	YES <input type="checkbox"/> NO <input type="checkbox"/>

MEMBERSHIP OPTIONS: Please Tick one

- Individual: \$50 per year
 Museum Volunteer: \$25 per year
 Senior/superannuitant/student with ID: \$40 per year
 Joint membership - two adults at one address: \$60 per year
 Family membership - two adults and two children: \$90 per year / \$15 per each additional child
 Group membership: Details on application

HIGHLIGHTS

Wednesday 16 July

Kids' Quiz Quest

Fingers on buzzers! Be in to win some great prizes with this fun knockout quiz. 10.30am - 12 noon; see page 7 for registration details.

The Path to Peru Trail

Uncover the Museum's links to Peru every day these school holidays! See page 7 for further details.

Wednesday 9 July and Wednesday 16 July

Wetasaurus Wednesdays

Come and meet our Dinomite Club president Wetasaurus. He's a specialist in hugs and hi-fives! Appearances at 11am and 2pm.

Friday 11 July and Friday 18 July

Storytelling

Experience the quirky tales of storyteller extraordinaire Jo Lees, and find out what it was like to be an Incan!

WORKSHOPS

Bookings are essential. Call 09 306 7077 from 27 June to secure your place.

Senior Workshops: aged 7-12 years; \$8/\$5 for Dinomites.

Tuesday 8 July

Water Monkeys and Cool Crustaceans
Make a habitat for real live water monkeys! 10am - 12 noon or 1.30pm - 3.30pm

Wednesday 9 July

Theatre Games.
Get dramatic with Jo, in this fun theatre workshop. 10am - 12 noon or 1.30pm - 3.30pm

Monday 14 July

Too Cool Tiles
Paint and glaze a clay tile using designs from Islamic art. 10am - 12 noon or 1.30pm - 3.30pm

Junior Workshops: aged 4-6 years; \$6/\$5 for Dinomites.

Thursday 10 July

Seedy Frames
Decorate picture frames! 10am - 11am or 1.30pm - 2.30pm

Thursday 17 July

Bumble Bee Craft
Make a giant bumble-bee using paper plates. 10am - 11am or 1.30pm - 2.30pm

10-MINUTE ACTIVITIES

Indulge your creativity with some cool art and crafts. No need to book, just pop into the Discovery Centre every day from 10am - 12 noon and 1.30pm - 3.00pm. \$2, or \$1 for Dinomites.

Saturdays and Tuesdays

Texture Pictures

Use sand, seeds and shells to create art!

Spin and Spiral Art

Make a fabulous spiral picture.

Sundays and Wednesdays

Pinch Pots

Make and decorate a mini clay pot.

Badge Making

Design a badge.

Monday and Fridays

Rain Sticks

Recreate the sound of Auckland's weather!

Rainbow Fish

Make a tropical rainbow fish.

Thursdays

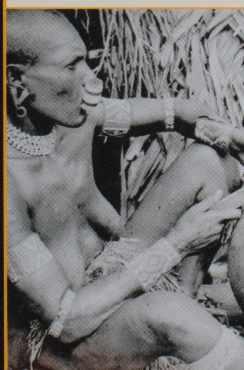
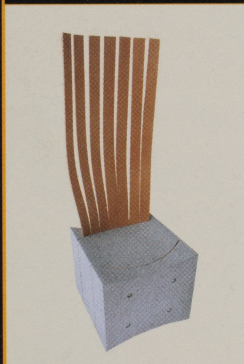
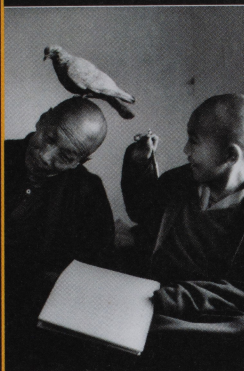
Kupesi Rubbings

Use tapa cloth to create Pacific art.

Bead Critters

Make bead critters!

Exhibitions at a glance



Special Exhibitions

Gold & Sacrifice: Treasures of Ancient Peru

11 July - 21 September 2003

Explore the gold, power and ritual of the Incas and their ancestors in this priceless exhibition from Peru.

The Art of Islam: Treasures from Kuwait

Until 15 June 2003

Rare objects of exceptional beauty from the Kuwait National Museum, including gem-encrusted jewellery and gold leaf manuscripts from the Qu'ran.

Magnum° - Our Turning World

Until 15 June 2003

Defining photographs from the closing decade of the last millennium, featuring work from some of the world's finest photojournalists.

Decorative Arts Gallery East

Metaform 03

6 June - 7 September 2003

An exhibition of innovative New Zealand furniture design created with a new hard wood product from Carter Holt Harvey.

Pictorial Gallery

Three Cameras in New Guinea

Until 10 August 2003

A photographic look at a lost colonial age in Papua and New Guinea.

East West Gallery

Art 4 Kidz

Until 13 July 2003

A celebration of children's book illustration from the collection of educational publisher, Wendy Pye.