



AUCKLAND WAR MEMORIAL MUSEUM

# NEWS

Number 55 August 1993

ISSN 0111-2252

**COURIER POST** 

## Spectacular Royal Doulton Ceramics Exhibition Not To Be Missed

**Auckland Museum - 4 September - 31 October**

When old Charley, the nightwatchman with the sly grin and spotted bow-tie, visits Auckland Museum, he will be treated like royalty. With him will come *Cleopatra*, *The Little Tramp* and over 700 other pieces of unique and exquisitely beautiful Royal Doulton. Many of these are extremely rare and have never been seen in public before. Kept in homes, vaults and private collections, they are being released solely for this CourierPost Royal Doulton Ceramics Exhibition.

The exhibition has been organised by the Museum of New Zealand Te Papa Tongarewa and the Canterbury Museum. Its national tour has been made possible by the generous support of CourierPost. The exhibition includes 540 pieces from New Zealand homes; some were even purchased at the 1906 Christchurch exhibition and others were designed especially for New Zealand.

A range of lectures, special activities, events and guided tours has been organised by Auckland Museum to complement this exhibition. These are fully described in the brochures enclosed, along with the special invitation to clubs and other groups to have a programme arranged especially for them, including a talk, guided tour and morning tea.

Don't miss this once-in-a-lifetime opportunity to view the stunning CourierPost Royal Doulton exhibition. For further information and bookings, ring Katrina Stamp or Belinda Sinclair on 309-0443. ■

### ROYAL DOULTON OPEN EVENING FOR MEMBERS

**6 - 8.30 pm Friday 17 September**

A special opening for Museum Members to enjoy a leisurely and relaxed evening at the Museum. This is your opportunity for a free viewing of the CourierPost Royal Doulton Exhibition (on production of a Member's card). Members' guests will be admitted at the concessionary rate of \$4.00 per person. There will be musicians playing for your enjoyment and refreshments will be available. Entry via the East Door (opposite Maunsell Road).



*Cleopatra* by Charles Noke 1892 (Museum of New Zealand)



## DEVELOPMENTS

### Latest News on Museum Redevelopment Project

To keep Members informed of progress, each quarterly edition of **Museum News** from now on will feature a special update on the Museum's \$42 million redevelopment project.

#### THE CASE FOR GOVERNMENT SUPPORT

The main focus of the redevelopment project continues to be the securing of capital funding to enable the work to proceed. As mentioned frequently in the media recently, the territorial local authorities have

indicated that they will contribute \$17 million to the essential building work and display enhancement components, if Government provides a dollar-for-dollar subsidy.

#### MAYORS PRESENT CASE IN WELLINGTON

A recent Mayoral and Museum delegation presented a joint submission to the Minister of Art and Culture, the Hon. Doug Graham and the Minister of Tourism, the Hon. John Banks in support of Auckland Museum's case for Government support. The presentation was sympathetically received and a supporting paper is being prepared by the Ministry of Cultural Affairs to be considered by Cabinet soon. Their response, in this important election year, is expected to be positive.

#### COMMERCIAL OPPORTUNITIES IDENTIFIED

A special Commercial Ventures Group, chaired by former Museum Councillor Rob Fenwick, has been established to identify key opportunities within the Museum that are likely to attract investment from the commercial sector for activities compatible with the Museum's mission and objectives. A call for 'expressions of interest' has been advertised nationally, seeking registrations of interest regarding food and beverage and retailing activity. Expressions of interest for development of the rear internal courtyard are being sought both nationally and internationally. The Government's decision, and responses to the call for expressions of commercial interest, are awaited with intense interest. We anticipate a positive and exciting turn of fortune for the Museum after such a long wait.

#### FIRST FLOOR DEVELOPMENT WORK PROGRESSING

At its June meeting, the Museum Council approved a comprehensive package of works to be carried out during the current financial year on the first floor, northwest and west gallery areas. The first floor Maritime Gallery is almost cleared, with the majority of artefacts going on loan to the new Maritime Museum. Next May, a stunning exhibition, called 'Volcanoes & Giants' will open in this area. The development will also include a children's discovery centre, an exhibition specific retail space and visible storage for the Pacific ethnology collections. 'Volcanoes & Giants' will be the flagship exhibition of the Museum redevelopment project and will feature a simulated volcano, animated recreations of New Zealand's ancient giants and a crawl through giant weta tunnel for children. The exhibition will run for 21 months and visitors will pay an admission fee. Planning for this first-floor development involves a large number of Museum staff and is well under way. ■

Left: A visual representing the flagship exhibition of the redevelopment project, 'Volcanoes & Giants'



continued from p

Note: A resident revived the 'novelty' last end. More than inaugural flight Hobsonville was now making the Gulf. A special for the service and other sta

## STA

Anthony V pointed as A lections, will secondment effective 1 S the existin Lindsay Sha his present time and Dir resume full e the Museum

Ewen Car pointed Cur holding the p rator of Bot Ewen has an and general and also bri established servation.

Janet Clo up a new rol servator, br ence in obje the British M tensive field tract work overseas.

Douglas R the Botany porary tech Lottery Bo databasing log.



## FEATURES

### 'First Contact' from New Guinea Tribe

by Roger Neich

Recently, Auckland Museum acquired a 'first contact' collection of about 100 artefacts from former Dutch New Guinea, assembled by Unevangelised Fields Missionary Russell Bond who served amongst the Dani people of the Grand Valley of the Baliem River during the 1950s. Hidden under the clouds of the central New Guinea Snow Mountain Range, this 6,000 feet high mountain valley with a population of 80,000 had been discovered from the air by the Richard Archbold Expedition in 1938. It later became famous as "a lost Shangri-La" when an American airforce plane crashed in 1945 with only three survivors. Watched by the world's media, the survivors were plucked out from amongst the warrior tribes by a huge glider operation.

By 1954, the Dutch Administration were keen to extend some control into this last tribal enclave and they allowed mission organisations to set up bases in the valley. Russell Bond was a member of the first Unevangelised Fields Mission party sent in to explore for possible mission

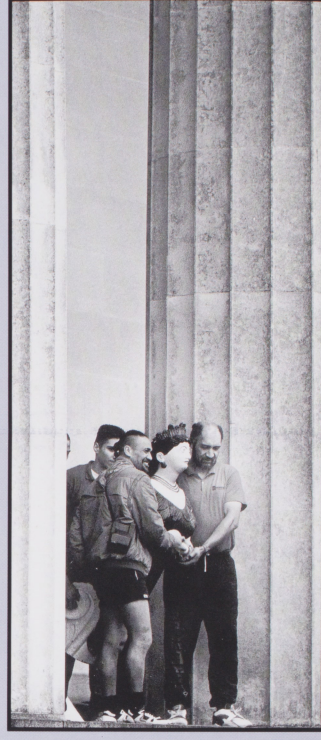
sites in January 1955. They were flown in by amphibian plane which landed them on the Baliem River. For 6 weeks they tramped through the Grand Valley, over a mountain range and up to a small lake where another plane intended to land and pick them up. Unfortunately, this mission plane crashed elsewhere in New Guinea and the party was stranded at the lake for six months, with limited food supplies, until a small Piper Pacer floatplane managed to reach them.

After the mission base was established at Bokondini, Russell Bond and his family worked for 12 years amongst the Dani. They came to know these people who used stone adzes, fought with long spears and bow and arrows, built fortified settlement, raised pigs and cultivated huge intensive sweet potato gardens. Russell Bond realised how quickly the old ways were changing and saw the value of a representative collection of their material culture. This collection is now held safely in Auckland Museum, supported by several hundred of Russell Bond's contemporary photographs.

*\* 'First Contact' artefacts are those collected from an indigenous culture at the time of first contact with Europeans. They constitute an important document of the state of that culture before outside interference. This quality is what makes the Maori artefacts collected on Captain Cook's voyages of such value for New Zealanders. ■*



First Unevangelised Fields Mission party assembled at Sentani before departure for the Baliem Valley, January 1955. Photo: R. Bond



### Grand Old Lady Escorted from Museum

The 114-year-old figurehead from the *Hazel Craig*, a 467-tonne barque which was built in Aberdeen, used from 1899 until 1907 and then converted into a shore ship in 1922, was gently but firmly escorted down the Museum front steps in July. She was one of the 400 pieces of New Zealand's seafaring history that were tenderly wrapped and transferred from the Auckland Museum to the new Maritime Museum on Hobson Wharf. Amongst the other items were huge cast-iron century-old cauldrons once used to boil down whale blubber, a cannon from a brig wrecked at Herekino, north of Hokianga in 1846 and one of the first M-class yachts from 1922. ■

Photograph: Martin Sykes, NZ Herald

### Little R of Muse

In 1992, Auckland Museum celebrated the opening of the first Auckland Museum building by John Alexander. Director Stuart Smith, following his research into the relatively obscure history of the little remembered

After he left Auckland (because the people were asleep"), Smith, who he enjoyed a distinguished merchant and as a provincial politician involved in the publication of the work of the Honorary Patron of painting in oil and address hung in the opening in 1888. quake.

Smith's life and work most totally forgotten in the land and Napier led him to Napier and found the grave of Smith and his wife. He believes he is the century to have a grave. He continues this fascinating history of the Museum. ■

The headstone of Alexander Smith and his wife in Napier Cemetery





# August School Holiday Programmes at Auckland Museum

**COURIERPOST'S  
ROYAL DOULTON  
CERAMICS EXHIBITION**  
*- Handled With Care -*



## China Painting for Children

See the CourierPost Royal Doulton Show and learn how to paint at the same time...

Children aged 6 and over will have an opportunity to paint a tile ready for framing or to use as a teapot stand.

**Booking:** each session limited to 20 - booking essential please use the form provided. For enquiries call Belinda Sinclair at the Museum on 309-0443.

**Cost:** \$6.00 per child.

**Session 1.** Wed, 8 September 1.30 - 4pm

**Session 2.** Thurs, 9 September 1.30 - 4pm

**Session 3.** Friday, 10 September 1.30 - 4pm

**Session 4.** Sunday, 17 October 1.30 - 4pm

## Bunnykins Storytime

Bring along your children to hear evergreen tales told about Bunnykins ware. Booking not required.

**School Holiday Storytime**

**Sessions:** 6-10 September, from 11.30am

## FELTING AND WEAVING

Popular with all children aged 6 years and over - come and learn how to produce your own felting and weaving. These sessions are given by members of the Auckland Hand Weavers and Spinners Guild.

**Cost:** \$5.00 per child.

**Session 1:** Friday, 3 September 10.30am - 12.30pm

**Session 2:** Thursday, 9 September 10.30 - 3.30pm

## BUGS AND BEETLES

Explore the wonderful variety of shape and colour in the world of insects. Curator John Early will present special sessions for children aged from 6 years and up. Children closely examine bugs and then design and build their own "designer bugs".

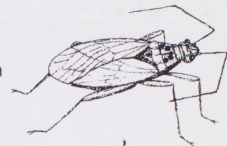
**Cost:** \$5.00 per child.

**Session 1.** Tuesday, 31 August 10.30am - 12pm

**Session 2.** Tuesday, 31 August 1.30 - 3pm

**Session 3.** Friday, 3 September 10.30 - 12pm

**Session 4.** Friday, 3 September 1.30 - 3pm



## CLAY SCULPTURE WORK FOR CHILDREN

Children aged 5 years and over will have the opportunity to make their own clay sculptures in special classes by Auckland Studio Potters.

**Cost:** \$6.00 per child

**Session 1.** Monday, 6 September 10.30am - 12.30pm

**Session 2.** Monday, 6 September 1.30pm - 3.30pm

**Session 3.** Tuesday, 7 September 10.30am - 12.30pm

**Session 4.** Tuesday, 7 September 1.30pm - 3.30pm

**Booking:** each session limited to 20 - booking essential. For enquiries call the Community Education Officer at the Museum on 309-0443.



## Booking Form

Name: \_\_\_\_\_

Address: \_\_\_\_\_

Phone No: \_\_\_\_\_

Amount enclosed: \_\_\_\_\_

To register, please complete the form and send with your money to: **Community Education Officer, AUCKLAND MUSEUM, Private Bag 92018, Auckland. Phone: 309 0443.**

Please tick the programmes you wish to attend

**CHINA PAINTING FOR CHILDREN Cost: \$6.00**

Session 1  Session 2  Session 3  Session 4

**FELTING AND WEAVING Cost \$5.00**

Session 1  Session 2

**BUGS AND BEETLES Cost \$5.00**

Session 1  Session 2  Session 3  Session 4

**CLAY SCULPTURE WORK Cost: \$6.00**

Session 1  Session 2  Session 3  Session 4



# Auckland Museum Fieldtrips

## Volcanoes of Auckland

Leader: Les Kermode

Date: Sunday 31 October, 9am - 5.30pm

A day-long guided bus trip around the volcanic cones and lava fields of Auckland city, including an ash-covered hill from the devastating eruptions that created Lake Taupo; the remnants of a mature Kauri forest flattened by a volcanic blast, and many of Auckland's other well known geological sites.

**Transport:** Departs from the rear of the Museum at 9am promptly.

**Cost:** \$25.00 (Notes included)

**To Bring:** Own lunch, comfortable walking shoes, a hat and a raincoat.

## Archaeology Trip - The Great South Road

Leader: Nigel Prickett

Date: Sunday, 7 November, 9.30am - 5.30pm

Starting from the remains of the Albert Barracks wall in the University of Auckland grounds, we visit sites associated with the Waikato Campaign along the Great South Road to Pokeno, including the Nixon Memorial (Otahuhu), St John's Redoubt, Drury redoubts, mile posts.

**Transport:** By bus from Auckland Museum departing promptly at 9.30 am and returning at 5.30pm.

**Cost:** \$25.00

**To Bring:** Own lunch, wet weather gear and sturdy footwear.

## Combined Geology & Botany Trip to Rangitoto Island

Leaders: Bruce Hayward and Ewen Cameron

Date: Sunday, 21 November, 9.30am to 5.30pm

Visit Auckland's youngest volcano with the Museum's geology and botany specialists as guides. Making our way to the top of Rangitoto, we will examine the successional process of colonisation of the lava flows by vegetation, the different characteristics of the rubbly lava flows, their levees, collapsed lava caves and remnants of earlier scoria cones.

**Transport:** By boat MV Explorer departing from West Princes Wharf at 9.30 am and returning at 5.30 pm.

**Cost:** \$30.00

**To Bring:** Own lunch, wet weather gear, sturdy footwear, torch (for those who wish to enter lava caves)

Numbers for the fieldtrips are limited please use the booking form provided.  
For enquiries call the Community Education Officer Ph: 309 0443

## Booking Form

Name: \_\_\_\_\_

Address: \_\_\_\_\_  
\_\_\_\_\_

Phone No: \_\_\_\_\_

Amount enclosed: \_\_\_\_\_

To register, please complete the form and send with your money to: **Community Education Officer, AUCKLAND MUSEUM, Private Bag 92018, Auckland. Phone: 309 0443.**

Please tick the trip or programme you wish to attend

### VOLCANOES OF AUCKLAND

Date: Sunday October 31 Cost: \$25.00

### THE GREAT SOUTH ROAD

Date: Sunday November 7 Cost \$25.00

### RANGITOTO ISLAND

Date: Sunday November 21 Cost \$30.00

### CHINA PAINTING FOR ADULTS Cost: \$30.00

Session 1  Session 2 (refer back page of NEWS for details)





## Old Lady from Museum

figurehead from  
7-tonne barque  
Aberdeen, used  
7 and then con-  
e ship in 1922,  
y escorted down  
steps in July. She  
0 pieces of New  
g history that  
opped and trans-  
ckland Museum  
me Museum on  
ongst the other  
st-iron century-  
e used to boil  
r, a cannon from  
Herekino, north  
6 and one of the  
from 1922. ■

kes, NZ Herald

## Little Remembered of Museum Founder

In 1992, Auckland Museum celebrated the opening 140 years ago of the first Auckland Museum, founded by John Alexander Smith. Museum Director Stuart Park has been continuing his research into the early history of the Museum and into Mr Smith, a relatively obscure figure who has been little remembered.

After he left Auckland in 1857 (because the people here were "all asleep"), Smith moved to Napier where he enjoyed a distinguished career as a merchant and entrepreneur and also as a provincial politician. He was closely involved in the philanthropic and charitable work associated with the erection of Napier Hospital and was made Honorary Patron of the Hospital. His painting in oils and an illuminated address hung in the Hospital from its opening in 1884 until the 1931 earthquake.

Smith's life and work have been almost totally forgotten in both Auckland and Napier. Stuart Park's research led him to Napier Cemetery where he found the grave of John Alexander Smith and his wife Elizabeth. Stuart believes he is the only person this century to have placed flowers on the grave. He continues his research into this fascinating man and the early history of the Museum which he created.

■ The headstone marking the grave of John Alexander Smith and his wife Elizabeth in the Old Napier Cemetery



Nurse Eliza Smith

## Courage to Save Boy's Life Remembered by Osborne Family

This story is contributed by Barbara Smith, the great niece of Eliza Smith, a nurse who helped save the life of Charles Osborne, son of the famous water-colour artist Fanny Osborne who was featured in the 'Reflections' exhibition at Auckland Museum earlier this year.

Fanny Osborne lived for many years on Great Barrier Island with her husband and 13 children. On the 30th September 1900, Charles Osborne and his brother were playing with a rifle when it accidentally discharged, shattering Charles' arm. In haste, his brother Ernest ran from Tryphena to Charles Werner's Pigeongram agency at Okupu, to send an urgent message for help to the mainland. The scrawled telegram message reads: "Dear Mr Winkelmann, Charlie Osborne has smashed his arm last night from the wrist to the elbow by a rifle bullet. His Father says that the arm will have to be amputated at once so Ernest asked me to send you this, i.e. send a steamer at once to the Barrier (Tryphena)

also if possible, a Surgeon. Yours in haste, Charles Werner"

At the time, one of the worst storms in many years was raging. Despite the violent winds, Mr Werner managed to dispatch his two best birds with messages addressed to a family friend asking him to send a steamer and a surgeon at once. The storm worsened and other pigeons sent later, refused to go. However, after six hours battling through the gale, one of the pigeons, (aptly named *Velocity*) arrived at Mr Howie's pigeon loft in a bedraggled state. Mr Howie immediately jumped on his bicycle, delivered the message to the family friend, Henry Winkelmann and rounded up the Master, the engineer and the crew of the S.S. *Kawau* and a doctor and nurse from the Accident Ward at Auckland Hospital. The nurse was Eliza Annie Smith. After six hours battling the storm, the S.S. *Kawau*, the crew and medical contingent arrived at Tryphena. Charles Osborne was immediately put on board and in appalling seas the boat struggled back to Auckland. Later at Auckland Hospital Charles' arm was amputated and his life saved.

In gratitude to Nurse Smith, the Osborne family gave her a book of the poems of Eliza Cook with six original paintings by Fanny Osborne and her two daughters. The water-colour floral paintings are as bright and vivid as if they had just been painted and the inscription by Charles Osborne reads: "To Nurse Smith, in remembrance of the 30th September & 1st October 1900 part of each day being spent on board the S.S. *Kawau* on her passages from Auckland to Tryphena and back in a tremendous gale....."

Eliza Smith later became Matron of Whangarei Hospital and in 1908 married William Main in Whangarei. She maintained contact with Charles Osborne for many years and died in 1950 at the age of 80 years. The book with its vibrant flower paintings is now in the possession of her great niece, Barbara Smith.

continued over page



continued from previous page

Note: A resident of Great Barrier Island revived the 'Pigeongram' service last used at the turn of the century, as a 'novelty' last Queen's Birthday weekend. More than 200 pigeons made the inaugural flight from Port Fitzroy to Hobsonville with about 15 birds a week now making the trip across the Hauraki Gulf. A special stamp has been printed for the service, available at Port Fitzroy and other stamp agents. ■

## STAFF NEWS

**Anthony Wright**, recently appointed as Assistant Director Collections, will take up a two-year secondment as Project Director, effective 1 September. The role of the existing Project Director **Lindsay Sharp**, will cease under his present contract at the same time and Director **Stuart Park** will resume full executive authority for the Museum.

**Ewen Cameron** has been appointed Curator of Botany after holding the position of Acting Curator of Botany for the past year. Ewen has an excellent taxonomic and general knowledge of botany and also brings to the Museum an established public profile in conservation.

**Janet Clougherty** recently took up a new role as Exhibitions Conservator, bringing a wide experience in object conservation from the British Museum as well as extensive field conservation and contract work in New Zealand and overseas.

**Douglas Rogan** recently joined the Botany Department as a temporary technician, funded by a Lottery Board grant to assist in databasing the herbarium backlog. ■

## EXHIBITIONS

### **Te Timatanga - Tatau Tatau** *The Foundation [of the Maori Women's Welfare League] - Let Us Be United*

WOMEN'S SUFFRAGE  
WHAKATU WAIHINE  
1893-1993



Erana Lazarus, Te Hapua

From 27 September until February next year, portraits of founding members of New Zealand's Maori Women's Welfare League by photographer Margaret Kawharu will be displayed in the central Maori Gallery. These women were interviewed by Dame Mira Szasz for a book documenting the history of the League since it began in 1951. The book is being published to coincide with the Year of Indigenous People and the Centennial of Women's Suffrage in 1993 and will be launched at Auckland Museum. This exhibition is assisted by the Women's Suffrage Centennial Trust.

## ANNUAL GENERAL MEETING

Notice is hereby given that the 125th Annual General Meeting of the Auckland Institute & Museum will be held at 8pm on Monday 15 November 1993. Business will include the election of Members' representatives on the Council (see below) and the consideration and adoption of the Annual Report and the statement of Accounts (to be distributed later). Following the AGM, Anthony Wright, the Museum's Project Director, will describe the Museum redevelopment project for Members and introduce three team leaders from the staff. They will briefly outline some of the redevelopment works already underway: Nigel Prickett on the *Volcanoes & Giants* exhibition; Roger Neich on the Pacific Ethnology visible storage project; and Katrina Stamp on the Children's Discovery Centre.

### CALL FOR NOMINATIONS

Nominations are hereby called to fill two vacancies as Members' representatives on the Council of the Auckland Institute & Museum. There is no prescribed form but in terms of Rule 5, nominations must be in writing and they must include the names and signatures of the proposer and the seconder, both of whom must be financial members. The nominee must also be a financial member and should sign the nomination signifying acceptance of the nomination. The proposer is invited to provide a short statement about the candidate to be sent out with the voting paper.

Nominations should be forwarded to Mr G. S. Park, Secretary, Auckland Institute & Museum, Private Bag 92018, Auckland, reaching him no later than 4pm on Monday 18 October 1993.

Dr R. L. Bielecki and Ms L. M. Wilson have completed their three-year terms and so retire from the Council at the Annual General Meeting: under rule 5(a) they are also eligible for re-election.



## LECTURES

### Suffrage Lecture Series

In recognition of the Centennial of Women's Suffrage, Auckland Museum continues its lecture series given by women, in the Auditorium, from 1 - 2pm. Each lecture will focus on the monthly theme that has been identified by the Suffrage Centennial Trust.

#### *September Theme:* **Women, Politics and the Vote**

Wednesday, 1 September

Speaker: Sonia Davies, MP

Title: **What Have Women Done with the Vote?**

#### *October Theme:* **Women and the Economy**

Tuesday, 5 October

Speaker: Angela Foulkes, NZCTU

Title: **Women and the Economy**

#### *November Theme:* **Women and the Law**

Tuesday, 2 November

Speaker: Dame Augusta Wallace

Title: **Women and the Law**

#### *December Theme:* **Vision and the Future**

Thursday, 2 December

Speaker: Her Excellency Dame Catherine Tizard

Title: **Women: A Vision for the Future**

## Geology Lecture Series

There are three lectures in this series - the first is the prestigious **Hochstetter Lecture** of the Geological Society of New Zealand on the Waimangu geothermal area and the second and third lectures are on the volcanic history of Northland. The lectures are designed for a general audience and provide an opportunity for Institute Members and others to become more familiar with the exciting geological history of northern New Zealand. The venue will be the Auckland Museum, (entry by the East Door), commencing at 7.30pm. Entry by donation.

#### *Geological Society of NZ - 1993 Hochstetter Lecture* **Epilogue to the Pink & White Terraces:**

Irreversible change in the Rotomahana - Waimangu Hydrothermal system as a consequence of a volcanic eruption

Tuesday 21 September

Speaker: Dr Stuart F. Simmons, Geothermal Institute, University of Auckland

#### **Giant Volcanoes of Northland's Past**

Wednesday 29 September

Speaker: Bruce W. Hayward, Auckland Museum

#### **Young Volcanoes in Northland**

Wednesday 13 October

Speaker: Ian Smith, Dept. of Geology, University of Auckland

## PROGRAMMES

### China Painting for Adults

A special workshop for adults will be given by the Auckland Porcelain Artists Association. Each participant can expect to complete a piece ready for firing. Booking is essential: numbers are limited. Please use the booking form included on the Auckland Museum Fieldtrips insert.

**Cost: \$30.00 per person.**

**Session 1.** Sunday, 19 September  
10.30am - 3.30pm

**Session 2.** Sunday, 10 October  
10.30am - 3.30pm



### Music and Spinning in the Museum

These two popular free series continue until December 5. **Music in the Museum** by students from Auckland University School of Music continues on the first Sunday of every month at 12 noon in the Furniture Hall.

The Auckland Handweavers and Spinners Guild will also continue demonstrations in the Main Foyer on the first Sunday and third Wednesday of every month from 1 to 3 pm.

Auckland War Memorial Museum was erected in the Auckland Domain in 1929 and extended in 1960 as the Memorial to those from Auckland Province who died in the two World Wars. It is administered by the Auckland Institute and Museum, whose origins go back to the first Auckland Museum of 1852. Auckland Museum News is issued free to members of the Institute and Museum, a group of friends and supporters of the Museum.

**Auckland Institute and Museum, Private Bag 92018, Auckland, Phone 0-9-309 0443.**