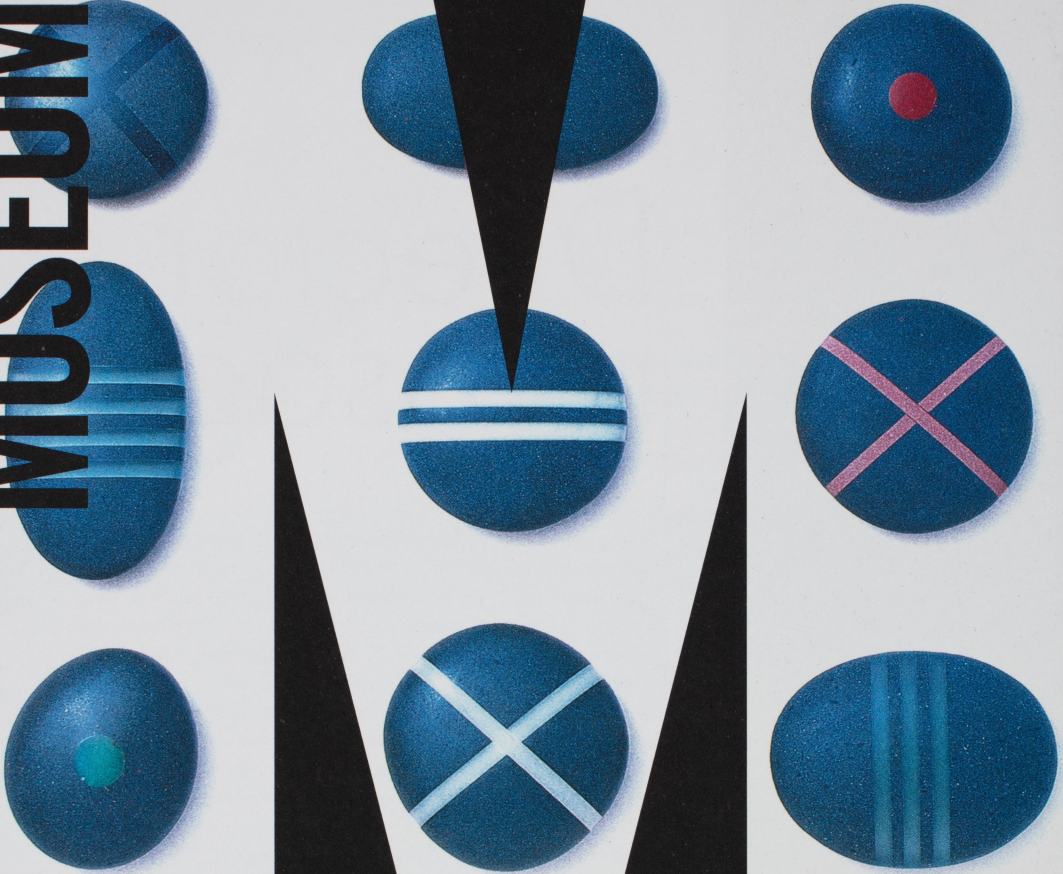


MUSEUM



WINTER 04

A Quarterly Guide to Exhibitions and Events  
at Auckland War Memorial Museum

ISSUE 99



QUARTERLY



# Director's message

SUSTAINING SPONSOR



RADIO CHAMPION

Tune your mind.  
**NewstalkZB**

**Auckland War Memorial Museum**  
Domain Drive Auckland Domain

Open 10am – 5pm daily  
Except Christmas Day  
and Anzac morning.

Admission is by donation.  
\$5 is appreciated.  
Children, of course, are free.  
Charges may apply to  
special exhibitions.

Private Bag 92018, Auckland  
Infoline: 09 306 7067  
Enquiries: 09 309 0443  
Website: [www.aucklandmuseum.com](http://www.aucklandmuseum.com)

Library: 09 306 7070 extn 687 or 686  
Open Monday – Friday, 1pm – 5pm

Museum Store: 09 309 2580

Auckland Museum Institute:  
09 306 7070 extn 883

Venue hire: 09 306 7056

Services to schools: 09 306 7040

Cover: Greywacke Stones, John Edgar.  
Kevin Smith photographed by Jane  
Ussher, 2001.



Since our last MQ, considerable progress has been made on the Grand Atrium Building. Almost half of the nine metre deep basement in the courtyard has been excavated, with piling and ground anchors in place. A large tunnel has been excavated under the eastern side of the building, permitting trucks to access the basement. Digging a huge hole is always fascinating, but when it penetrates down through layer upon layer of volcanic tuff in which you can clearly see the successive eruptions of the volcano whose rim we are perched on, it is especially so. While contractors have encountered lava "bombs", and the tuff is so hard it must be cut with a single claw before digging out, progress has been good. No obstacles have been struck yet, and work is ahead of programme. The courtyard will soon be fully excavated, at which time two levels of underground car parking will be dug - all in all, 40,000m<sup>3</sup> of spoil to remove.

The Auckland Museum Institute and Museum Circle have each made a very positive start to their fundraising campaigns in support of this work. These campaigns provide unique ways in which Aucklanders, and others, can make a contribution to this exciting and historic project. If you would like to know more about how you could get involved, please call our Development Manager, Amanda Sutherland, or me.

While many good things have been coming our way lately, I want to mention three staff successes. Louis Le Vaillant, the Museum's Applied Arts Curator, has been awarded the Errol Clarke Scholarship to allow him to study in residence at Attingham in England and spend time with top UK colleagues. Chanel Clarke, our Curator Maori has won an International Partnerships Among Museums award to spend a month at Salem, in the United States. And Museum Photographer, Krzysztof Pfeiffer is to have a solo photographic exhibition, "The Colour of New Zealand", at Warsaw University Museum, the Asia-Pacific Museum in Warsaw and the, yet to be opened, New Zealand Embassy in Poland. In every case these awards recognize the international calibre of our staff, and the excellence of their work.

Dr T.L. Rodney Wilson  
**Director**



## Jewellery from The Store

For the perfect birthday or anniversary gift, or if you would like to treat yourself to something a little bit different, look no further than the range of beautiful jewellery available from the Museum Store. Exquisitely crafted and in a range of designs, from greenstone bracelets, to paua shell necklaces and sparkly earrings, The Store has something for everyone. The paua shell necklace pictured is from Iris Stocklin, and priced at \$150.

## news in brief

### New marine biology curator appointed

Auckland Museum has appointed Dr Leslie Newman to the role of Marine Biology Curator.

Dr Newman comes from the Southern Cross University in Lismore, New South Wales, and is an accomplished researcher, field biologist, teacher and underwater photographer. Her research expertise on marine flatworms leads the world. Dr Newman has also produced a number of CD-ROMs, a book and a string of important research publications and joins the Museum from July.

### Grand Atrium update

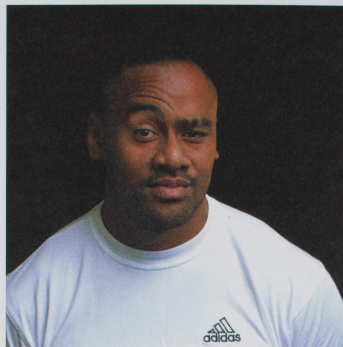
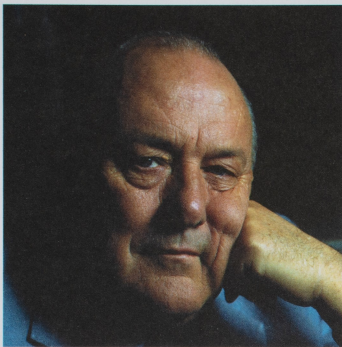
The concept design for the dome which will top the Museum's multi-million dollar Grand Atrium Building, was unveiled last month by leading New Zealand architect, Noel Lane.

The proposed low-rise dome is constructed from copper, steel and glass, and will top a suspended 'bowl' which will house a new learning centre, auditorium, special exhibition hall and events centre.

Parking around the Museum has also changed significantly with Museum Circuit Road closed to traffic around the rear of the building. Extra visitor car parking has been created along the Barracks roads at the southern end of the Domain.

### Subscribe to MQ

Do you regularly receive a copy of *Museum Quarterly*? If not, would you like to? Email us with your name and postal address if you would like to put on the permanent subscriber list for MQ, or, if you would prefer to receive electronic information via email, let us know your preference as an e-newsletter is currently in development. Send your details and preference to: [marketing@aucklandmuseum.com](mailto:marketing@aucklandmuseum.com).



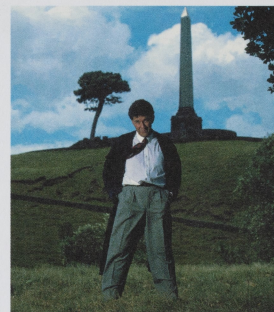
above: Sir Robert Muldoon, 1987, Jonah Lomu, 1999  
below: Dave Dobbyn, 1984  
opposite: Paul Holmes, 1988



JULY 2004 MARKS 65 YEARS SINCE THE MAGAZINE ICON, THE NEW ZEALAND LISTENER, WAS FIRST PUBLISHED. COINCIDING WITH THIS MILESTONE IS AN EXHIBITION OF PORTRAITS BY RENOWNED LISTENER STAFF PHOTOGRAPHER, JANE USSHER.

# Jane Ussher: PORTRAITS OF OUR TIME

THE LISTENER PRESENTS FAMOUS NEW ZEALAND FACES BY STAFF PHOTOGRAPHER, JANE USSHER



*Jane Ussher: Portraits of Our Time*, presents 40 images of celebrated New Zealanders whose careers span the breadth of our literary, cultural, sporting and political history over the last 25 years.

Jane's perfect timing and mastery of technique has made her the finest portrait photographer in New Zealand. Weekly *Listener* deadlines mean that Jane has never had the luxury of two or three days art directing a shot: "The portraits are not contrived," says *Listener* editor Pamela Stirling. "They don't rely on elaborate lighting or bossy art directors or gimmicks. This is what makes *Listener* portraits so fresh and compelling."

Those who have been her subjects credit her extraordinary results to an unusual rapport - "she makes you feel absolutely special", is how Paul Holmes once put it. She is David Lange's photographer of choice.

Included in the exhibition are stunning large-scale images of Sir Edmund Hillary, Janet Frame, Hone Tuwhare, Helen Clark, Dr Allen Curnow, David Lange, Sir Robert Muldoon, Sir Toss Woollaston, Ces Blazey, Russell Crowe, Paul Holmes, Bic Runga, Dave Dobbyn and Colin Meads.

*Portraits of Our Time* features a selection of images from *Jane Ussher Portraits*, a Random House publication marking the *Listener's* 65th anniversary.

ON DISPLAY IN THE PICTORIAL GALLERY FROM 5 JULY UNTIL 4 SEPTEMBER 2004

**Listener**  
CELEBRATING 65 YEARS  
THE JOURNEY OF A NATION



## WE FOUGHT FASHION - and lost WORLD: 1989 - 2005

WE FOUGHT FASHION - AND LOST IS ON DISPLAY IN THE DECORATIVE ARTS GALLERY WEST AND OTHER LOCATIONS THROUGHOUT THE MUSEUM FROM 27 AUGUST UNTIL 7 NOVEMBER 2004

*We fought fashion - and lost* presents a selection of fabulous and quirky, creative yet sometimes bizarre garments from the undisputed leaders of avant garde fashion in New Zealand - WORLD.

WORLD have come a long way since that moment in 1989 in an Auckland bus stop, when Francis Hooper and Denise L'Estrange-Corbet decided to change their dull and uninspired lives, and start their own business.

A few months later, the first WORLD store opened on Auckland's High Street. The store, selling Denise and Francis' handmade hats and jewellery, quickly emerged as the store to shop in a city previously lacking in design direction.

Now, fifteen years on and many awards and ground-breaking fashion shows later, WORLD is without doubt one of the premier houses in the history of New Zealand fashion.

Timed to coincide with the Air New Zealand Fashion Week 2004, *We fought fashion - and lost* has some of WORLD's most imaginative and flamboyant designs on display as well as presenting an intimate history of the WORLD silhouette.

From dresses made entirely of feather or folded paper to the "Jesus was a Samoan woman" outfit, from tapa pork pie hats to Sanderson fabric suits, *We fought fashion - and lost* is a tribute to New Zealand creativity and fashion flair.

The exhibition is curated for Auckland Museum by senior lecturer at Elam School of Fine Arts, Peter Shand.



above: Feather 1997

opposite: Prehistoric Collection  
Sydney Fashion Week 2000

Do You Really Want to Hurt Me Collection  
Sydney Fashion Week 2002

FASHION ON WHEELS IS ON DISPLAY IN THE DECORATIVE ARTS EAST GALLERY FROM 27 AUGUST TO 7 NOVEMBER 2004

## Fashion on Wheels THE NEW ZEALAND GOWN OF THE YEAR



above: The Gown of the Year Entourage, 1964  
right: Camellia hand tinted 1960

Before the Smokefree Fashion Awards, the Benson & Hedges and even the Cameo Fashion Showcase there was *The Gown of the Year* - a fairytale fashion extravaganza that wowed the country from 1958 to 1964.

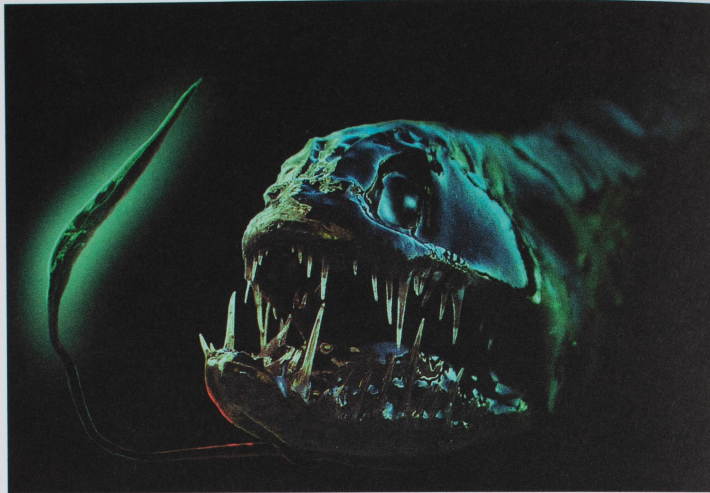
The premiere competition was judged by the New Zealand public and toured the country, from Whangarei to Wellington, stunning city and small town audiences in cabarets, town halls and pubs. At the grand finale the beautiful bevy of models, including names such as Anne Simich and Di Goldsworthy, wore each Gown of the Year entry with theatrical aplomb.

Curated for the Hawke's Bay Museum by Claire Regnault, *Fashion on Wheels* traces the history of this event against the social milieu of New Zealand in the '50s and '60s, an environment in which debutante and hunt balls prevailed, 21st birthdays were high-points of the social calendar and a woman's domain was largely within the home. *Gown of the Year* as an event spans the transition from the conservative yet jubilant 1950s to the more sophisticated 1960s.

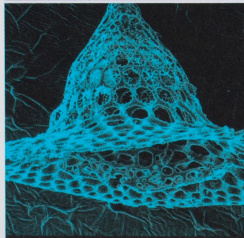
The exhibition features gowns from some of the top designers of the era, including Kevin Berkahn, Rosemarie Muller, Babs Radon, Michael Mattar and Malcolm Harrison.

*Fashion on Wheels* has been funded by Creative New Zealand.





## UNSEEN WORLDS



AN EXHIBITION WHICH REVEALS THE HIDDEN BEAUTY OF THE NATURAL WORLD, FROM THE DEPTHS OF THE OCEANS TO THE INNER WORKINGS OF THE HUMAN BODY, OPENS ON 2 JULY

*Unseen Worlds – New Dimensions* is a major national touring exhibition featuring inspiring images from three major New Zealand science institutions, the Malaghan Institute of Medical Research, the National Institute of Water and Atmospheric Research (NIWA) and Geological and Nuclear Sciences (GNS).

The exhibition explores the shared ground between art and science by examining the world at a microscopic level. It is designed to give New Zealanders an opportunity to see some of the amazing images scientists create in the course of their everyday work.

Forty large-scale images will be supplemented by information explaining the scientists' research and by a specially created lab space where kids can explore their own unseen worlds by bringing in objects to view under microscopes, or exploring with the objects and creatures available in the lab.

*Unseen Worlds* is on display in Special Exhibitions Hall 1 from 2 July until 3 October and is supplemented by a three-part lecture series jointly held with The University of Auckland. See page 9 for details of this series.

*Unseen Worlds* is supported by the Government's Science and Technology Promotion Fund, administered by the Royal Society of New Zealand.

ON DISPLAY IN SPECIAL EXHIBITIONS HALL 1 FROM 2 JULY UNTIL 3 OCTOBER 2004

Be better informed  
**Newstalk ZB**  
AUCKLAND • WELLINGTON



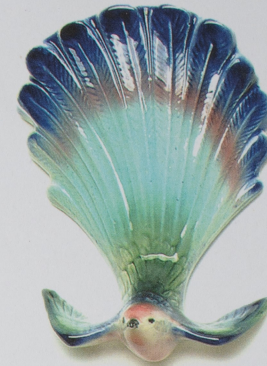
A project of Benson & Associates and The National Science-Technology Roadshow Trusts; Supported by the Government's Science and Technology Promotion Fund.

THREE EXHIBITIONS ON DISPLAY IN THE DECORATIVE ARTS GALLERIES, PROFILE NEW ZEALAND'S EXCELLENCE IN OBJECT ART.

## TITIAN Studio Ware THE CERAMIC ART OF CAMERON BROWN

Bright underglaze colours painted onto butterfly, pansy and fantail wall vases and Maori souvenir ware, like waka riding the waves, are some of the original ideas that Cameron and Dorothy Brown made into ceramics in West Auckland from 1948 to 1968. Because of their responsiveness to popular taste, their crafting of multiples of slip-cast earthenware, the Browns have established, what we may now call, a New Zealand Pop Ceramics genre. This is the first stage of a nationally touring exhibition.

ON DISPLAY IN THE DECORATIVE ARTS EAST GALLERY UNTIL 8 AUGUST 2004

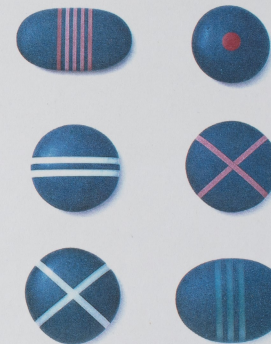


## JOHN EDGAR: Calculus

Using glass, jasper, lapus lazuli and marble to inter-cut 100 greywacke stones, Auckland sculptor John Edgar, has created a series of exquisite abstract miniatures.

Accompanied by larger 'touchstones' which invite visitors to run their hands over their smooth surface, *Calculus* is toured by the Dowse, Lower Hutt and is sponsored by Friends of the Dowse, Custane Associates Ltd and Aesthetics Lighting.

ON DISPLAY IN THE DECORATIVE ARTS CENTRAL GALLERY UNTIL 8 AUGUST 2004



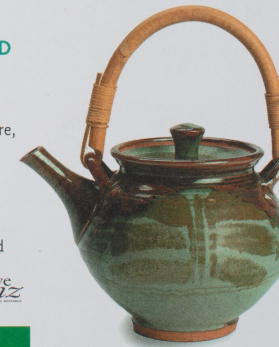
## PETER STICHBURY: A SURVEY OF A PIONEER NEW ZEALAND STUDIO POTTER

Marking potter Peter Stichbury's 80th birthday and his achievements as a ceramic artist of international stature, is this first major exhibition of Stichbury's work.

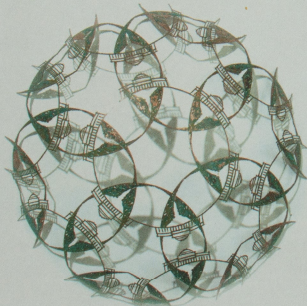
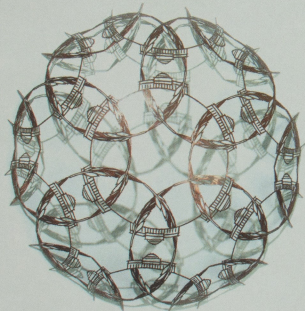
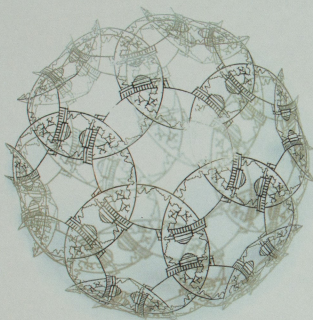
The exhibition features work from the major periods in Stichbury's career from the early days of teaching in Auckland, to his travels to work under the two greats of the British studio pottery movement, Bernard Leach and Michael Cardew, and finally, his establishment as a potter in Auckland.



ON DISPLAY IN THE DECORATIVE ARTS WEST GALLERY UNTIL 8 AUGUST 2004



# SUPPORT THE GRAND ATRIUM THROUGH A SPECIAL PURCHASE



THREE LIMITED EDITION WALL SCULPTURES BY RENOWNED NEW ZEALAND ARTIST, NEIL DAWSON, HAVE BEEN CREATED TO MARK THE UNVEILING OF THE MUSEUM'S GRAND ATRIUM DOME DESIGN.

The sculptures, which measure 800mm in diameter and 77mm in height, incorporate a stylized outline of the Museum logo with its new dome in place.

Commissioned by membership group, the Museum Circle, the sculptures are entitled *Quill*, *Cloud* and *Rangitoto*.

*Quill*, is finished in copper on steel and references feathers, *Cloud* is chromium plated steel and resembles cloud formations, while *Rangitoto*, is copper on steel with an applied green patina reflecting the bush-cover of the volcanic island.

The domes are offered in a limited edition of 75 sculptures at the special price of \$8000 each.

Receipts will indicate a \$4000 donation to the Museum Circle, an independent charitable trust supporting Auckland Museum. In recognition of this donation, all purchasers will receive a Benefactor membership of the Museum Circle.

For more information, contact Rozelle Edwards on 09 413 9212 or 025 272 9604, or Amanda Sutherland on 09 306 7043 or 021 689 380.

Neil Dawson *Cloud* 2004  
Neil Dawson *Quill* 2004  
Neil Dawson *Rangitoto* 2004

## What's up on the hill

### JULY

#### Sunday 11 July

**The Story Behind Titian Studio**  
Cameron Brown II and curator, Mary Morrison discuss the *Titian Studio Ware* exhibition. Education Room, 1pm.

#### Saturday 17 July

**Atamira Dance Collective Performances**  
Powerful contemporary dance. Maori Gallery, 3pm and the Manaia Room, 4pm with a film screening of 'Whakaruruhau'.

#### Tuesday 20 July

**Korean Shaman Public Lecture**  
Professor Boudewijn Walraven, Korean Shaman song and ritual expert, on the human world and the world of spirits and gods. Manaia Room, 6pm. Members free, others gold coin donation.

#### Wednesday 21 July

**Music in the Museum**  
An evening of 18C music with cellist Polly Sussex and pianist David Ward. Manaia Room, 7.30pm, \$5.

#### Thursday 22 July

**Korean Shaman Performance**  
A Korean Shaman ritual from the Mansudaet'ak Preservation Group. Bring a cushion. Museum Foyer, 7.30pm. Gold coin donation.

#### Saturday 24 July

**Peter Stichbury – Gallery Tour**  
A gallery tour with curator, Justine Olsen. Decorative Arts Gallery West, 11am.

#### Sunday 31 July

**Collector's Favourites: Titian Ceramics**  
A gallery tour with curator Mary Morrison. Decorative Arts Gallery East, 11am.

### AUGUST

#### Wednesday 4 August

**Unseen Worlds – Lecture Series**  
Auckland University's Kathy Campbell on the search for ancient water and life on Mars. Manaia Room, 7.30pm. \$15/\$12. To register phone 09 373 7599 ext 87831.

#### Saturday 7 August

**Collecting NZ Ceramics**  
An illustrated talk on collecting NZ ceramics with John Perry. Education Room, 1pm.

#### Wednesday 11 August

**Unseen Worlds – Lecture Series**  
NIWA's Malcolm Clark discusses NZ's deep ocean topography and biodiversity. Manaia Room, 7.30pm. \$15/\$12. To register phone 09 373 7599 ext 87831.

#### Wednesday 18 August

**Unseen Worlds – Lecture Series**  
Auckland University's Alistair Young on how magnetic resonance imaging is giving us a new view of the heart. Manaia Room, 7.30pm. \$15/\$12. To register phone 09 373 7599 ext 87831.

#### Wednesday 25 August

**Magic Mushrooms**  
Landcare's Dr Peter Buchanan on the diversity of fungi. Manaia Room, 7.30pm, entry via East Door. Members free, others gold coin donation.

#### Sunday 29 August

**Time in Motion – People's Voice**  
The NZ Film Archive looks at protest rallies and people's movements. Manaia Room, 3pm.

### SEPTEMBER

#### Saturday 18 September

**Living Treasures Day – Korean Cultural Celebrations**  
A day celebrating Korean culture with lectures, films, performance and kids' activities.

### JULY AND SEPTEMBER SCHOOL HOLIDAYS

School's out! And whether or not it's raining outside, Auckland Museum is the place to be for fun activities these school holidays!

#### HIGHLIGHTS

Check out our exhibition *Unseen Worlds* and explore our special lab space. There's fossil discovery workshops and a larger than life Museum trail!

On 13 July, get creative with artist John Edgar, in a workshop 1.30pm–3.30pm. John will also do a session with pumice stones and coloured cards; see our website for details.

In September see our two fashion exhibitions and take part in fashion workshops and activities every day of these holidays.

#### JULY 10-MINUTE ACTIVITIES

Suitable for all ages. No bookings required; pop into the Discovery Centres every day of the holidays. All activities cost \$2 (\$1 for Dinomites), and run from 10am – 12 noon and 1.30pm – 3pm.

#### Mondays and Fridays

Morning: **Pet Rocks**  
Afternoon: **Rainbow Fish**

#### Tuesdays and Saturdays

Morning: **Spin and Spiral Art**  
Afternoon: **Furry Animal Cards**

#### Wednesdays

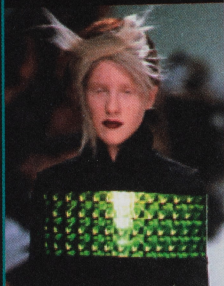
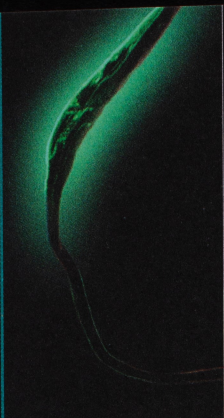
Morning and afternoon:  
**Badge-making**

#### Thursdays and Sundays

Morning: **Shell Bracelets**  
Afternoon: **Jiggly Jellyfish**

# Exhibitions at a glance

TĀHĀRI PĀRANGA HĪWA  
AUCKLAND MUSEUM



## Special Exhibition

### **Unseen Worlds – New Dimensions**

2 July – 3 October 2004

The art of science is unveiled in this exhibition of magnified images from our usually unseen world.

## Decorative Arts Gallery West

### **We fought fashion and lost: WORLD 1989-2005**

27 August – 7 November 2004

A survey of the iconic New Zealand fashion house, WORLD. Timed to coincide with Fashion Week 2004.

### **Peter Stichbury**

Until 8 August 2004

Marking Peter Stichbury's 80th birthday, is this exhibition of his work from the 1950s to today.

## Decorative Arts Gallery East

### **Fashion on Wheels**

27 August – 7 November 2004

A fairytale fashion extravaganza of New Zealand gowns from the 1950s and '60s. Timed to coincide with Fashion Week 2004.

### **Titian Studio Ware – the Ceramic Art of Cameron Brown**

Until 8 August 2004

Kitsch and kiwiana combine with classical influences in this collection of Titian Studio Ware.

## Decorative Arts Central

### **John Edgar: Calculus**

Until 8 August 2004

A series of exquisite abstract miniatures reflecting the artist's two decades of work with greywacke stone.

## Pictorial Gallery

### **Jane Ussher: Portraits of Our Time**

5 July – 3 September 2004

An exhibition of stunning portraits from Listener photographer, Jane Ussher, featuring some of our most famous local faces.