



Auckland Museum

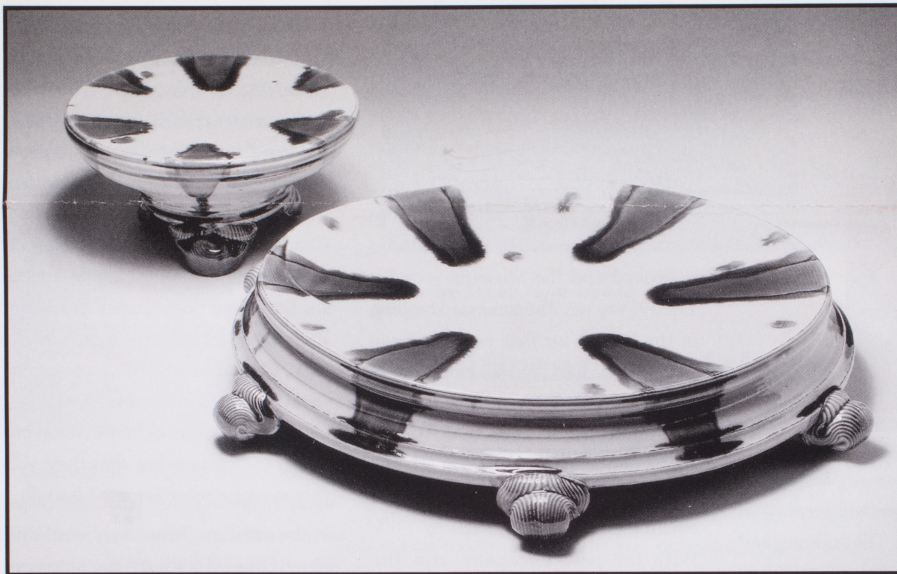
Te Papa Whakahiku

Number 62

May 1995

ISSN 0111 - 2252

A PUBLICATION PRODUCED BY AUCKLAND MUSEUM



Takeshi Yasuda - dramatic tableware

Exciting Exhibitions Programme

"My work, in fact all true craft work, is meant to be an artform which involves all the senses..." Takeshi Yasuda

Auckland Museum is delighted to host once again the celebrated **Fletcher Challenge Ceramics Award**, now in its 19th year. The judge for 1995 is Takeshi Yasuda, a self-professed sensualist renowned for his dramatic tableware and preference for strong 'touchable' form. Making domesticware that is anything but domestic, Yasuda believes that a piece of pottery is

completed only with the participation of the user. Award Administrator Moyra Elliott says that Yasuda's selection is expected to produce an exhibition which, while different from those of recent years, will celebrate the enormous versatility of clay. ♦

From the frontiers of ceramics to the art and culture of an ancient civilisation. Next year Museum visitors will have an unprecedented chance to peer over the shoulders of archaeologists and historians and get a first hand look at the legacy of the Mongols and their Asian predecessors. A spectacular exhibition **Empires Beyond the Great Wall: The Heritage of Genghis Khan**

continued next page

IN THIS ISSUE

Lottery Grants Board Funds Insect Restoration

Tohu - Te Tau O Te Reo Maori



Fighting Shields from Papua New Guinea

NEWS

continued from previous page

has been secured by Auckland Museum and is one of many highlights in the new exhibition programme.

In addition, negotiations are underway to bring an exciting family exhibition to the Museum for the Christmas holiday period and planning has begun for an exhibition of the work of the renowned New Zealand photographer Robin Morrison.■

Changes to Governance

Auckland Museum has been 'blessed' for many years with an unusual governance structure. The building and collections are owned by a Trust Board comprising six Trustees, but the ongoing governance is supplied by a Museum Council of twenty-nine members. Sixteen of the Councillors are elected by the membership of the Institute and thirteen are elected members of the Museum's contributing authorities: Waitakere, North Shore, Manukau and Auckland Cities; and Papakura, Rodney and Franklin District Councils.

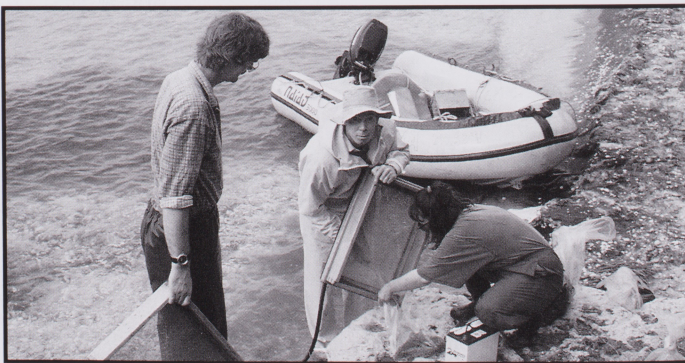
This structure was considered by the Trust Board and Council, and by their contributing authorities, to be unwieldy. New legislation has been prepared which, when enacted, will see the Museum governed by a single Trust Board of ten Trustees. Five Trustees will be nominated by the contributing authorities, four by the Institute and one by Taumata a Iwi, a

committee representing Maori interests in the Museum, its collections, practices and programmes.

It is not clear how long the legislative process will take, but as an interim measure the Trust Board and Council have established a non-profit company, Auckland Museum Enterprises Limited, to manage the Refurbishment Project 2000 and the commercial operations implicated by it. The six Directors of the company have been chosen by the Trust Board and Council in consultation with the Museum's major funders.

On the last day of March the Annual Budget for the Museum was approved and the Museum levy for 1995/96 was set. The continued funding of the Project for that year has been secured and the Councils have agreed to maintain the value of their funding in real terms by the addition of construction cost escalation for the period 1992 (when the original estimates were prepared) to 1995. With the new Company and the approved budget, all is in place for an accelerated building programme in the forthcoming year.■

Auckland Museum staff working in the Chathams



Research in the Chatham Islands

Early indications suggest that collections made by Auckland Museum staff in the Chatham Islands contain many species not previously recorded in the Islands.

In March of this year four staff from the Museum's Marine and Geology Departments spent ten days undertaking research in the Chathams, focusing primarily on the shallow marine life of the area. Although the major groups of marine animals on the Chathams have been well documented, some smaller animals have been little studied. Brett Stephenson and Jenny Riley made extensive collections of the small Crustacea which live among the seaweeds and seafloor sand. These will be studied in detail at the Museum but initial indications are that they will produce new records for the Islands.

In addition, Bruce Hayward and Hugh Grenfell made the first extensive collections of living foraminifera (microscopic shelled marine protozoa) from the Islands and collections were also made from the limestones laid down on the centre of the main island over the past 60 million years. These limestones contain a number of interesting fossils, many of which are unknown on mainland New Zealand.■

On Tuesday the Lottery Entertainment Fund threw a party at the Museum Library for two important

New refrigeration vaults will protect the Museum's irreplaceable photographic collections from them at a constant humidity, and prevent deterioration of the made of ceramic

New Facilities Commissioned in Library

construction specifications. Gordon Maitland's year project was a bequest of the

The second new painting room. Like both tempera controlled. Dr and Eddie S much needed match of any

Tohu

The Auckland is joining with Auckland in a Language. The displays show in their collections will be launched on 8 May and around the 1 December.■

n the Islands

suggest that
y Auckland
atham Islands
not previously
four staff from
and Geology
n days under-
e Chathams,
n the shallow
Although the
animals on the
ll documented,
have been little
son and Jenny
ollections of the
live among the
and. These will
e Museum but
that they will
or the Islands.

Hayward and
e first extensive
foraminifera
arine protozoa)
ollections were
mestones laid
the main island
n years. These
a number of
y of which are
New Zealand.■

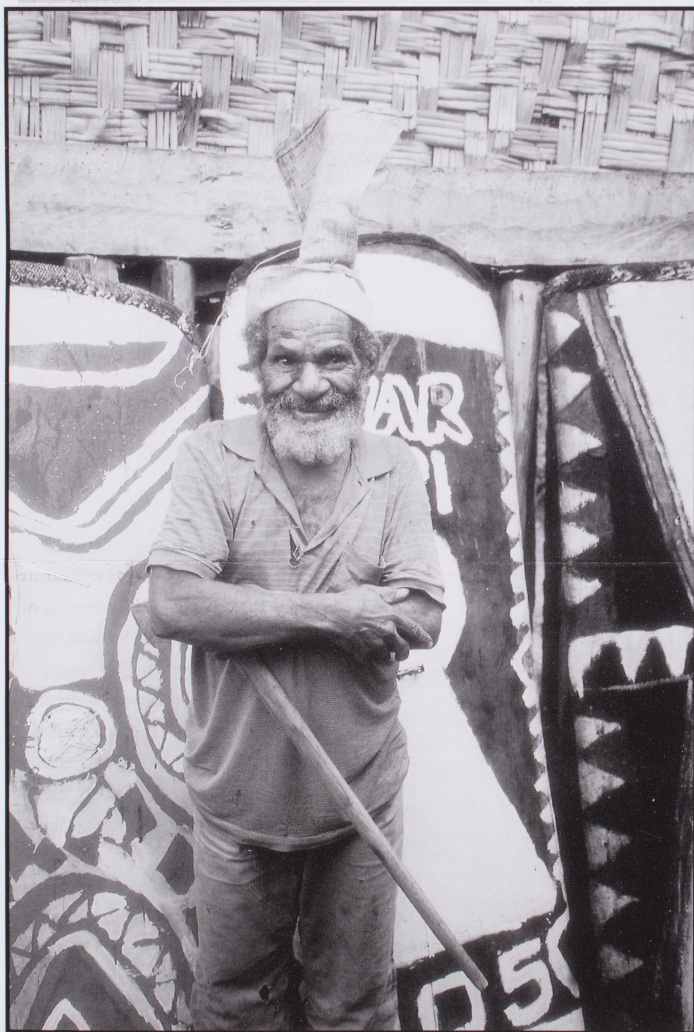


Fighting Shields from the Highlands of Papua Guinea

An exciting recent acquisition by Auckland Museum is a series of contemporary fighting shields from the Highlands of Papua New Guinea, where tribal battles between rival clans still break out from time to time. Men armed with spears, bows and

arrows, and shields and dressed in traditional fighting costume of pig-grease, body paints and feather head dresses fight alongside others carrying more modern weapons and wearing jeans, tee-shirts and sun glasses.

Shields used in the battles are still made in traditional form out of light wood with a plaited band of fibre across the top and a rope sling at the back for carrying. Some are fitted with cassowary plumes mounted on springy stems which the warrior can



wave to intimidate his enemy. Contemporary shields are coloured with commercial paints bought at trade stores and, although they may carry old clan designs, many now feature modern trade labels and can include written messages, dates and political slogans. Several of the shields now in the Museum have fencing wire and flattened food tins incorporated into the construction or repair, while one shows the results of a shotgun blast.

Contemporary collections of modified traditional artefacts are important in order to document the ways in which indigenous cultures are adapting to the modern world. Understanding how this is happening now can help us to appreciate how similar changes have been occurring in Pacific cultures ever since Europeans arrived here.■

*New Guinea tribal elder
with fighting shields*

Donation from Reader's Digest

The Museum has received \$2,000 from Reader's Digest (New Zealand). This generous donation, a recognition of the Museum's contribution to the community, will be used in the continuing restoration of the Maori Court.

On Dis

Richard W
has worked in
that the sight
him nervous
degree at Elan
the early 1970

Behind Scenes

Canterbury M
he returned no
up his present
at Auckland M
Display Dep
designed and i
of special ex
permanent gal
a wide range of

Richard has
personal int
Museum: his
basis of the po
and 'Kiwi & M

After hours
pursuit of po
challenge of m
and artist w
Freemans Bay
somewhat fr
included in
Geyserland' ex
Museum. Ot
lycanthropy a
Bob Dylan rec

May Madness in Weird & Wonderful

Throughout the May holidays **Weird and Wonderful Discovery Centre** staff will present a host of exciting new activities. Take part in some of our 'Sea Focus' activities and 'Design a Goblet' in the competition associated with the **Chihuly** exhibition. For a small additional charge, have fun with flax weaving, puppet making, shell craft and badge making. Join us for story telling, puppetry, face painting and demonstrations in the galleries. Other activities will take place in the Main Foyer but don't forget - entry to **Weird and Wonderful** is still only \$1.00 which makes it the best value in town!

Feeding frenzy

At 11.00 am each day in **Weird and Wonderful** the sea creatures in the salt water aquarium display their terrible table manners. See the star fish turn its stomach inside out discover how wide a sea anemone's mouth can stretch find out what kina eat . . . ! To complete your fishy morning, make a fish badge for just \$2.00, and test your detective skills with one of our marine activity sheets.



Design a Dream Goblet

A special competition for children to be run with the **Chihuly** exhibition. Three designs will be selected to be made at Giovanni Glass by a team of glass-makers from the Giovanni and Global Glass Studios. The children concerned will be invited to watch the glass-making process. Winning designs and pieces will be exhibited in the Museum for a short period and given to the children. There will also be a prize for one child whose drawing or design is outstanding but unsuitable for making in glass. Entry forms are available from **Weird & Wonderful** and at the entry to the **Chihuly** exhibition. The competition is open to children up to the age of 13 years. Entries close on 21 May and the judge's decision is final.

Entry fee \$1.00.

Sunday in the Galleries

The Main Foyer will become a centre for regular Sunday activities for both adults and children. For a nominal charge: enjoy a range of craft activities, try clay work or build a bug, make your own badge or weave a bookmark. Activities will take place each Sunday from 12.00 noon until 3.30 pm. Look for the 'What's on Today' board in the Foyer for details or this exciting programme.



Music in the Museum

We welcome back to the Museum performance students from the Auckland University School of Music. Members are invited to enjoy free concerts given by some of New Zealand's leading young musicians and singers. The concerts are held in the Furniture Hall at 12.00 noon on the first Sunday of each month.



Spinning in the Museum

The Auckland Handspinners and Weavers Guild will give demonstrations of spinning and handwork in the Main Foyer on the first Sunday of each month from 12.00 noon until 3.00 pm and the third Wednesday of each month from 10.00 am until 1.00 pm.

**1995 Auckland Museum
Winter Lecture
Series**

**The Offshore
Islands of Northern
New Zealand**

Lectures will be held in the Auckland Museum Supper Room at 7.30 pm. Entry by the West Door by donation.

Wed Jun 7

Volcanoes and ice ages: origins of our northern islands. Bruce Hayward, Auckland Museum.

Wed Jun 14

Priorities for island restoration. Dick Veitch, Dept of Conservation, Auckland.

Wed Jun 21

Rare and unusual plants on our northern offshore islands. Peter de Lange, Science and Research Directorate, Dept of Conservation.

Wed Jun 28

Island restoration: an invertebrate perspective. Chris Green, Dept of Conservation.

Wed Jul 5

The success of the restoration of Tiritiri Matangi. Malvin Galbraith, Friends of Tiritiri.

Wed Jul 12

Natural history of the Three Kings Islands. Anthony Wright, Auckland Museum.

Wed Jul 19

Archaeology and the prehistoric human impacts on the biota of our northern offshore islands. Bruce Hayward, Auckland Museum.

Wed Jul 26

Kiore impacts on our native biota. Graham Ussher, PhD research student, University of Auckland.

Wed Aug 2

Restoration of islands: the rising lid for threatened reptiles. David Towns, Science and Research Directorate, Dept of Conservation.

Wed Aug 9

The archaeological heritage of Rangitoto, Motutapu and Motukorea Islands. John Coster, Auckland Museum.

Wed Aug 16

Conservation values of Great Barrier and Rakitu Islands. Ewen Cameron, Auckland Museum.

**Fletcher Challenge
Ceramics Award
Members
Events**

Lunch-Time Function

The Fletcher Challenge Ceramics Award opens to the public on 2 June. We are pleased to offer a rare chance to meet the judge of this year's Award. Takeshi Yasuda will present a lecture and slide show and visitors can then join him and Award Administrator Moyra Elliott for light refreshments.

Where: Supper Room

Date: Tuesday 30 May

Time: 12.30 - 1.30 pm

Admission: Members Free

General Public: \$5
(children under 12 free)

Evening Celebration

An exclusive invitation for Members to join judge, Takeshi Yasuda, administrator Moyra Elliott, members of the Auckland Studio Potters and Auckland Museum staff to view the exhibition and enjoy complimentary refreshments and entertainment.

Where: Exhibition Hall

Entry: West Door

Date: Friday 2 June

Time: 6.00 - 8.30 pm

Admission: Members Free

**Members Events
Booking
Form**

Tuesday 30 May

12.30 - 1.30 pm

Yes, I would like to confirm
... persons will be
attending.

Name:

Contact Phone:

Friday 2 June

6.00 - 8.30 pm

Yes we/I are Institute
Members and would like to
confirm ... persons will
be attending.

Name:

Contact Phone:

Programmes

te his enemy.
ds are coloured
ints bought at
ough they may
ns, many now
e labels and can
ages, dates and
ral of the shields
ave fencing wire
ns incorporated
or repair, while
ts of a shotgun

collections of
l artefacts are
o document the
genous cultures
modern world.
his is happening
appreciate how
been occurring
since Europeans

ler

from Digest

received
s Digest (New
ous donation, a
useum's
ommunity, will
uing restoration

*Richard Wolfe at work in
the Museum Foyer*

On Display

Richard Wolfe confesses that he has worked in museums for so long that the sight of a taxidermist makes him nervous. After completing a degree at Elam School of Fine Arts in the early 1970s he joined the staff of

Behind the Scenes

Canterbury Museum. Four years later he returned north and soon after took up his present post, Curator of Display at Auckland Museum. Since then, the Display Department of four has designed and installed a huge number of special exhibitions, refurbished permanent galleries and assisted with a wide range of other Museum activities.

Richard has been able to realise his personal interests while at the Museum: his own books were the basis of the popular 'Kiwiana' (1990) and 'Kiwi & Moa' (1991) exhibitions.

After hours he enjoys writing, the pursuit of popular culture and the challenge of maintaining the villa he and artist wife Pamela share in Freemans Bay. Richard also paints - somewhat furtively - and was included in the recent 'Elvis in Geyserland' exhibition at the Rotorua Museum. Otherwise he studies lycanthropy and listens to his old Bob Dylan records. ■



Musings

Distinguished Visitor

The Museum recently hosted a most enjoyable visit by Dr Lucy Cranwell Smith who was the Museum's first Botanist from 1929 - 1944. Dr Cranwell Smith maintains a distinguished international career in botanical research, as well as keeping up an active correspondence with friends and colleagues from her home in Arizona.

International Visitors Survey

Auckland Museum is taking part in a major market research project. Up to 40,000 overseas visitors will be questioned as they visit New Zealand museums over the next nine months. Sponsored by the Museum of New Zealand Te Papa Tongarewa, the project will collect invaluable information and highlight opportunities to increase the numbers of tourists visiting our museums.

AGEE Jars Wanted

Small (500ml) AGEE jars are used by the Museum's Marine Departments

for the preservation of some shellfish, starfish, shrimps and fish. The manufacturers have stopped making them and we would be very grateful for any unwanted jars you may have. Please ring Jenny Riley at the Museum or leave your contribution with reception at the back of the Museum.

Vice President Resigns

Vice President of the Museum Council, Gary Law, who resigned in March, was thanked at the meeting of Council by President Dr Harold Coop. Dr Coop paid tribute to Mr Law for his support and input saying that he had been Vice-President during a time of unprecedented activity and stress and his many talents had been much appreciated. In reply, Mr Law outlined his enjoyable association with the Museum and expressed his confidence in the Director and Museum Council. Mr Law is to take up an appointment in Brisbane.

n the Islands

suggest that
y Auckland
atham Islands
not previously

four staff from
and Geology
days under-
e Chathams,
n the shallow
Although the
animals on the
ll documented,
ave been little
on and Jenny
ollections of the
ive among the
nd. These will
e Museum but
hat they will
r the Islands.

Hayward and
first extensive
foraminifera
rine protozoa)
ollections were
estones laid
e main island
n years. These
a number of
y of which are
New Zealand.■



On Tuesday 11 April Pat Baker of the Lottery Environment and Heritage Fund threw a symbolic switch in the Museum Library to officially open two important facilities.

New refrigerated negative storage vaults will prolong the life of the Museum's important collection of photographic negatives by keeping them at a constant temperature and humidity, and will prevent further deterioration of film-based negatives made of cellulose acetate. The

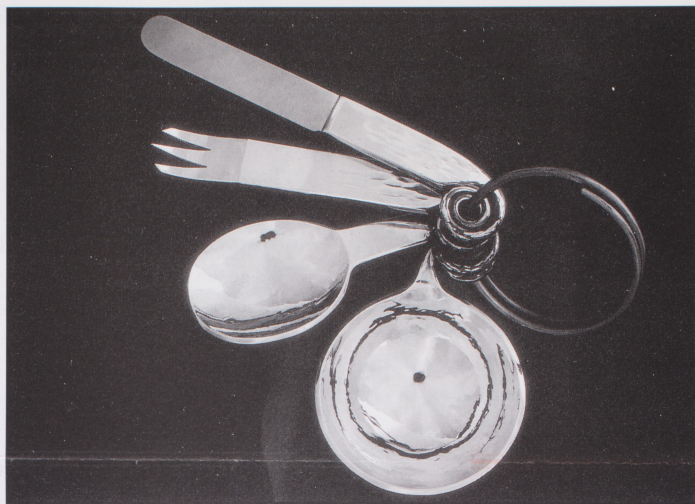
New Facilities Commissioned in Library

construction of these vaults, to the specifications of Photographic Librarian Gordon Maitland, has been a three year project funded largely by the bequest of the late Dr Spedding.

The second facility opened was the new paintings and drawings reserve room. Like the negative vaults it is both temperature and humidity controlled. Designed by Janice Chong and Eddie Sun the room provides a much needed storage area that is the match of any in New Zealand.■

Tohu

The Auckland Museum Library is joining with other libraries of Auckland in a celebration of the Maori Language. They have arranged 'Tohu' displays showing the Maori treasures in their collections and illustrating their services to readers. The displays will be launched at Auckland Museum on 8 May and will rotate, one a month around the libraries, from May until December.■

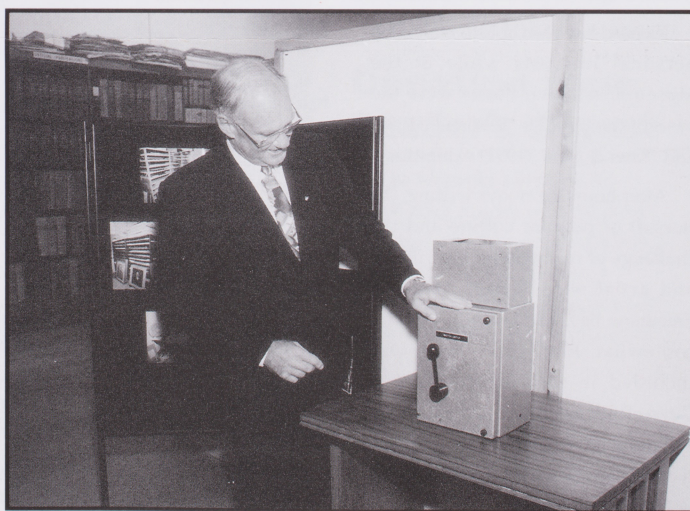


Camping Set by Peter Woods

Significant Acquisition

Camping Set by Peter Woods, one of New Zealand's foremost contemporary silversmiths, was recently acquired by the Auckland Museum. Over a number of years the Museum has collected a representative sample of this Auckland artist's work. *Camping Set*, a handbeaten/worked piece evoking holiday mode, makes a significant addition to the collection.■

Pat Baker opens the new facilities in the Museum Library



Especially for Members

Lost Cards

If you have misplaced your membership card please contact David Bishop, your Membership Officer, for a replacement. With the introduction of more benefits for Members it will become increasingly important that you have your card, so please, take care of it and have it ready for your next visit.

Special Discounts for Exhibitions

Watch the Exhibition Calendars for details of significant reductions for Members at paying exhibitions. For example, card-holding members can visit the Fletcher Challenge Ceramics Award for \$4.00 instead of \$6.00.

Discounts for Exhibition Catalogues

Discounts of up to 20% will be available on most exhibition catalogues. The beautiful Len Castle Ceramics catalogues are still available at a discounted rate to Members. Contact David Bishop for details.

Special Rates for Exhibition Merchandise

Caltex Volcanoes & Giants retail shop offers a permanent 15% discount to Members and a special 30% discount currently on children's sunhats, school bags, adult caps and polo shirts. They look and feel great!

Special Members Exhibition Events

Members will receive invitations to at least two special exhibition events which will feature guest speakers,

entertainment and complimentary refreshments. See the Public Programmes insert for details of the Fletcher Challenge Ceramics Award Members Lunchtime Function and Evening Celebration.

For further information about Membership benefits please phone David Bishop on 309 0443 ext 714.

Lottery Grants Board Funds Restoration

Tim Webster is faced with a problem - 11,500 problems actually. He has recently joined the Auckland Museum staff on contract to help restore an important historical insect collection.

Major Thomas Broun's desk, containing his collection of some 11,500 beetles from all around the world, has been in the Entomology Department since the Museum purchased it in 1956. It is a superb example of a Victorian natural history collection with its many spectacular and bizarre beetles crammed in wonderful profusion in the thirty drawers of the desk.

Over the years, the collection has been deteriorating slowly and the time has come when conservation work is essential. Fortunately, a grant of \$10,000 from the Lotteries Grants Board has allowed the Museum to employ Tim Webster to give this collection the attention it badly needs.

Once repaired and cleaned the beetles will be replaced in the refurbished drawers in exactly the same order as when assembled by Broun at the turn of the century. Judging by the national media interest,

the collection should prove a popular exhibit once the project is completed. ■

Tim Webster works on Broun's beetles



Staff News

In March the Museum welcomed **Tony Rasmussen** who came from the Science Centre and Manawatu Museum to fill the new position of Assistant Registrar. Tony has a B.A. in History and is pursuing postgraduate studies.

Janet Clougherty, Exhibitions Conservator, left the Museum at the end of April to work in private practice, specialising in the conservation and restoration of ceramics and glass.

Public Programmes staff are delighted with their new colleague **Elaine Sautia** who joined the Division from the Department of Conservation. Elaine is Executive Secretary to the Assistant Director and the Division.