

M

Museum Quarterly is the official magazine
of the Auckland War Memorial Museum

Q



MUSEUM

QUARTERLY

December 1999 Issue 80

Museum Closes for APEC

The Auckland Museum was closed to the public for two days during the APEC summit in mid-September.

The Museum was the venue for the Apec Leaders' Retreat on 13 September, hosted by Prime Minister Jenny Shipley and attended by President Clinton and 19 other heads of state.

As part of the security measures, the entire Auckland Domain, including the Museum, closed to the public

and traffic from 6pm Saturday 11 September to 6pm Monday 13 September.

Dr Rodney Wilson, Director of the Auckland Museum, said the leaders were hosted in the newly refurbished central Maori Gallery.

"The Maori Gallery had the finishing touches put on it by the curators for the APEC meeting, a couple of months ahead of its official opening to the public."

The Museum returned to its

usual hours of 10am to 5pm on Tuesday 14 September. It is normally only closed on Christmas Day.

President Clinton is photographed here on the Museum steps wearing a piece of carved jade, by Bob Stewart, from the Museum Store. Bob Stewart came to jade carving after training in painting at the University of Auckland, and a period of 20 years as a woodturner and furniture maker. He lives on Waiheke

Island where he has a close affinity with the sea. The Maori have always associated "Pounamu" with the sea God Tangaroa – an association which Bob finds very apt. "Much Jade is like the sea frozen in time. It has depth, shallows, currents and stillness, clarity and obscurity."

His current work exploits the deep colouration of the Arahura Reef Jade, mined from the Southern Alps.

A Celebration of New Zealand Jewellery

The art of current and emerging New Zealand jewellers is put under the eyeglass in a touring exhibition that opened at the Museum on 20 November.

Turangawaewae – a public outing is a contemporary jewellery exhibition.

Curated by jeweller Richard Bell, the touring exhibition features the work of 28 established and emerging New Zealand jewellers, including 12 from Auckland.

"*Turangawaewae* is focused on the concept of identity, both of the artist and of the nation, and aims to present an honest appraisal of the current jewellery genre in Aotearoa," said Bell.

"I asked the artists how they see themselves and how that was represented in their work. Hence the title of the show, '*Turangawaewae*', roughly translated to 'a place to stand'. 'A public outing' refers to what the artists reveal of themselves in their work."

Louis Le Vaillant, Curator of Applied Arts at the Museum, says the exhibition has been timed to open in Auckland as part of the 1999 "Jewellery Month" festival, which is supported by Creative New Zealand Toi Aotearoa.

"The festival aims to place contemporary jewellery and the artists firmly in the public eye. *Turangawaewae* is a great opportunity for people to see unusual and exciting styles of jewellery."

This is the third biennial jewellery exhibition initiated by the Dowse Art Museum in Lower Hutt and Bell says that where the past two exhibitions had highlighted the works of predominantly European "Pakeha" jewellers, this time he sought out jewellers from a diverse ethnic and cultural pool.

"I didn't want to show only works by the establishment, but to give a broader and more inclusive perspective of jewellery-making in Aotearoa."



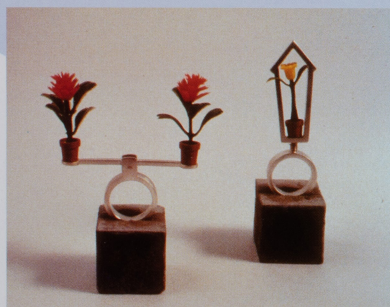
Nga Waka Necklace by Chris Charteris.

The Museum is running a number of public programmes to coincide with the exhibition. These include workshops on making silver rings, demonstrations by guest jewellers, a lecture on early Maori jewellery, as well as school holiday activities for children. Contact the Museum on 09 309 0443 for further information.

Turangawaewae has been shown in Hastings and Dunedin over the last six months and the Auckland Museum is its last venue before returning to the Dowse Art Museum.

Turangawaewae – a public outing closes in Auckland on 27 February 2000.

Seesaw Ring and Daffodil Ring by Francis Allison.



Participating Artists

Alan Preston – Auckland
Areta Wilkinson – Auckland
Brendon Bodley – Hawkes Bay
Brian Adam – Auckland
Chris Charteris – Auckland
Elena Gee – Auckland
Frances Allison – Auckland
Georg Beer – Dunedin
Grant Thompson – Otago
Jason Hall – Auckland
Jens Hansen – Nelson
Pacific Sisters – 5 artists
Koji Miyazaki – Christchurch
Lynn Kelly – Dunedin
Mary Curtis – Auckland
Mary McFarlane – Port Chalmers
Wallace Sutherland – Auckland
Paora Te Rangiuai – Auckland
Peter Deckers – Wellington
Rochelle Cant – Auckland
Ruth Baird – Auckland
Stephanie Lambert – Dunedin
Kaz Bartsch – Arapuni, Waikato
Daniel Belton

FIELD TRIPS

Contact details must be left with the Institute Administrator Byrdie Ayres (309 0443 X883) in case cancellation or postponement is required.

Sunday, 5th March

Mahurangi – an historical & industrial archaeological journey.

Leader: Gordon Ell

This re-scheduled field trip will take in the rich history and industrial archaeology of the Mahurangi – Warkworth area. Sites visited will include those dealing with aspects of the kauri timber and cement industry as well as the river port and transportation. Transport will be by bus, leaving from the rear of the Museum at 9.00am. North Shore residents can meet at 9.30am for a further pick up at the BP petrol station just before the Coatesville turnoff/SH1 intersection at the top of Albany Hill. Numbers are limited and bookings close on the 28th of January.

Saturday 28th March (late afternoon and early evening)

Nihotupu Bush Tramway.

An event for all members and especially the family. Come and explore this historic route on the Watercare Rain Forest Express – the Express will take us along the southern flanks of the Waitakere Ranges through luxuriant native forest with spectacular views out towards the Manukau. The line features ten tunnels (with glow-worms and cave wetas), six bridges and the spectacular Quinns Viaduct. At the end of the line dinner is planned at the picturesque Seaver Camp picnic area. A walk up to the Upper Nihotupu Dam is also possible. Commentary on the historical aspects of the dam construction and the tramway will be given. Numbers are limited so book now. Adults \$15, Children \$5.

Bookings close on the 11th of February.

UPDATES

INSTITUTE MEMBERSHIP SURVEY, JUNE/JULY 1999

During June the Institute surveyed members to provide input to its strategic planning process. The survey addressed the reasons for belonging to the Institute, members' use of Museum facilities, feedback on the role of the Institute and the activities it should provide.

The key findings were:

- supporting Museum development and being a member "of the Museum" were the most frequent reasons for membership of the Institute
- special and permanent exhibitions were the most frequently visited areas of the museum
- just over 60% opposed the Trust Board decision to "introduce a donation regime for entry to the museum"
- a third indicated they would now visit the Museum less often
- human history and natural history ranked equally as the areas of "most interest"
- activities for children and reciprocal benefits, in New Zealand and overseas, were the highest priorities for new Institute activities and services
- support for research was rated the most important activity that the Institute should carry out, followed by lectures, publications and field trips
- use of the library and lectures were rated the most important Institute activities to respondents
- most respondents were professionals,

with about a quarter school teachers, university staff or otherwise involved in education.

Since this was a postal survey, the results may not be representative of the membership of the Institute as a whole. However, the key findings have provided Council with useful insights and priorities for future directions for the Institute.

Nearly a quarter of the current membership returned their questionnaire – we thank you all for taking the time to answer and return the questionnaire.

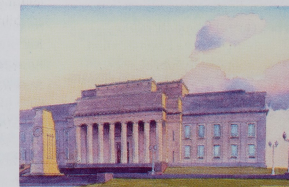
For more information, copies of the summary report presented to the SGM in July are available from Institute Administrator, Byrdie Ayres.

ACKNOWLEDGMENTS

The following people and companies are thanked for their recent support of the Institute. **Baldwin Shelston Waters** (patent & trademark attorneys, intellectual property lawyers, barristers & solicitors). **BHP New Zealand Ltd** and Philip Bagshaw. Sponsors of the 1999 Archey Lecture: **Bayer NZ Ltd**, the New Zealand Institutes of Chemistry and Physics (Auckland branches).

CARDS FOR SALE

Cards based on a watercolour by Bill MacCormick are available. As blank cards they are suitable for Christmas or post cards and are priced at \$10 for a pack of five. All proceeds go into the Institute funds to support the Museum. Send your order and payment to Byrdie Ayres,



Auckland Museum Institute, Private Bag 92 018, Auckland (309 0443 X883).

E-MAIL ADDRESSES

The Institute e-mail distribution list is now up and running. If you have e-mail or could possibly receive e-mail via a friend or relative please tell us your address. The list is used to bring short notice items of interest to members. Please make use of this service.

USE OF THE LIBRARY PURPOSES FUND

The Museum Trust board has approved the use of the Library Purposes Fund monies. The Fund, built by Institute member donations prior to 1996, will be used to provide for membership of the Library with the resources to retrospectively catalogue some of its collections. Work on the computer database using InMagic software is well underway with over 700 records already added. The cataloguing also gives Library staff the opportunity to do other tasks such as an inventory of the collection, note any missing copies, verify the accuracy of stated locations and make notes on the condition of the book for future conservation. The completed database will greatly improve access to the collections and enable much more efficient literature searches. Every record completed using the Library Purposes Fund acknowledges the generosity of members donations.

DONATION FUND NAMES

The Council has resolved to name the Research Fund the Archey Research Fund, and the Collections Fund the Cheeseman Collections Fund, after former directors of the Museum. The third fund is the Institute & Education Fund.

FORTHCOMING PROGRAMME

All lectures are at the Auckland War Memorial Museum starting at 7:30pm with entry via the front entrance.

Wednesday, 16th February
The Threat from Space.

Ian Griffin, Director Auckland Observatory

On July 7th 1999, New Zealand had a close shave with disaster, when a large meteor exploded some 35 km above the North Island. In the past, the Earth has not been so lucky, and there is growing awareness that cosmic impacts pose a considerable long term threat to the continuing existence of life on Earth. Ian will discuss "The Threat from Space" and will show how scientists from a number of disciplines are working to quantify and perhaps avoid its consequences.

Tuesday, 29th February
Genetic enhancement of



New Administrator

In early August, Byrdie Ayres took over from Daniel Malone as the Auckland Museum Institute's administrator.

Byrdie is a biologist and planner by training and inclination and has worked at the Auckland Regional Council, the Department of Conservation and numerous non-governmental organisations since arriving in New Zealand from the States 30 years ago.

She is interested in natural history and gardening, and designs and implements restoration programmes, in rural landscapes, using native plants appropriate to the area.

If you have any queries about membership, she is happy to assist and can be reached on 309 0443 extension 883, Monday through Thursday between 9am and 4pm.

learning and memory: myth, reality and ethics.

Matt Daring, Auckland University

Late 20th century neuroscience and genetic research has led to an explosion in our understanding of the mammalian brain. This lecture will discuss some of these advances, focusing on the interaction between the environment, genes, and behavior. Several well established dogma have had to be discarded. Our ability to genetically alter brain function and facilitate cognition, and ethical issues will be discussed.

Wednesday, 8th March
Island Care.

Warwick Murray, Department of Conservation, Auckland

The Hauraki Gulf continues to be a significant counterpoint to the urban centres burgeoning around its shores and there is a strong and

growing support for protection of the Hauraki Gulf's natural qualities. How do we approach the task of managing the Hauraki gulf and protecting its unique natural and historic values? Warwick will examine some of the options open to us (e.g. the Hauraki Gulf Marine Park) and suggest a way forward.

Wednesday, 15th March
Trouble under the Long White Cloud: Suicide in New Zealand.

Simon Hatcher, Psychiatry and Behavioural Science, University of Auckland

Simon describes the problem of suicide in New Zealand, how it has changed over the years, how people think about the causes of suicide and what we can do to prevent it.

Thursday, 23rd March
The magic of native plants in garden landscapes.

Rob Lucas, Open Polytech, Wellington (co-hosted by the Royal New Zealand Institute of Horticulture and the Auckland Museum Institute).

Photographer and author Rob Lucas is a strong advocate of the use of New Zealand plants but insists that they be used appropriately and with proper attention to their place in the landscape. He will outline his connection with and interpretation of our New Zealand landscape and will make a plea for the imaginative use of native plants.

Fashion Lectures

The Museum's wonderfully rich dress collection will be used to illustrate two lectures on fashion by Angela Lassig, the Assistant Curator of Applied Arts at the Auckland Museum.

Tuesday, 22nd February
The Age of Empire: European Fashion 1800-1914

institute

NEWS December 1999

AUCKLAND MUSEUM INSTITUTE
Friends of the Auckland War Memorial Museum

From the sheerest muslins to the widest of crinolines, the Age of Empire was an age of extremes. A look at some of the high (and low!) points of an exciting century of fashion.

Tuesday, 21st March
A New World: European Fashion in the 20th century.

"Out with the old, in with the new" could be the catchphrase of our century of fashion. A look at the impact of war, new technology and lifestyle change on the dress of our century.



'Names in Stone' Unveiled

On 29 October, Sir Edmund Hillary unveiled the Museum's tribute to donors who contributed over \$1 million to the Museum's "Names in Stone" appeal. The appeal was launched a year ago and asked Aucklanders to contribute the final sum needed for its \$43 million five-year restoration programme. The renovation of the Museum, which is producing entirely new galleries and displays will be completed this month. Donations were received from 86 Auckland families and individuals. The "Names in Stone" commemoration by Auckland sculptor Denis O'Connor records the names



Sir Edmund Hillary unveils "Names in Stone"

of the donors in the foyer of the Museum. The fundraising project has been an initiative of the Museum's "2000 Circle" of supporters headed by Patron Sir Edmund Hillary. The "2000 Circle" is to expand into a supporters group for the Museum called the "Museum Circle Foundation". All "Names in Stone" donors will be made founding members.

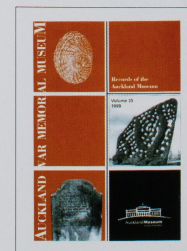
Museum 'Records' Volume 35 Published

Volume 35 of the *Records of the Auckland Museum* has recently been published, containing four papers in ethnology, history and palaeontology.

Of special interest is an important paper by Stuart Park, a former director of Auckland Museum, covering

the early history of the museum from 1852 to 1867, and providing details on the museum's founder J.A. Smith. Stuart has compiled a very detailed summary of information from unpublished archives and contemporary newspaper accounts.

Auckland Museum is one of the oldest in the country, and with its sesquicentenary looming in 2002, the paper is very timely. The museum's collections were once in the care of Emma Dickson, perhaps New Zealand's first woman museum curator. It is interesting to learn that security was always an issue - Major Russell of the 58th Regiment had to be written to in 1855 asking him to prevent his sons from



From the Director

A programme of exciting events leading up to the opening of the remaining Ground Floor galleries, and, early in the New Year, celebrating the completion of five years of rebuilding activity, has begun. The unveiling of the "Names in Stone" dedicatory sculpture in the main Foyer took place on October 29, and on November 12 the Museum presented honorary awards and medals to seven individuals who have made a signal contribution to the intellectual and public life of the Museum.

A series of previews is underway, giving specialist audiences a pre-opening glimpse of the new galleries as we enter the "Home straight" of completion. Response to the new galleries has been extremely gratifying. The same high standard achieved in the Pacific and Natural History galleries has been repeated, but the Maori, New Zealand History, Musical and Ancient Civilization stories ring several more changes in the prevailing theme.

It will be a wonderful summer as Auckland rediscovers its Museum, and as visitors to our city encounter a very beautiful and very exciting attraction. On behalf of the Board, the Taumata-a-Iwi, the Staff, our Volunteers and all the extended family of people who have made this possible, I want to thank our ratepayers, members, visiting public and general supporters. We all hope you like what we have achieved.

The Draft Annual Plan 2000-2001 was published on November 22. It includes important new policies and a "Ten Year Outlook" which is the basis of the Ten Year Plan scheduled for publication next year. Your submission on this Plan will be highly valued. This year, the Museum will also publish its first "Annual". The Annual will be an account of the significant achievements of the year past, and will provide greater background to selected key achievements than has been possible in previous Annual Reports.

I can scarcely believe that more than five years of demanding, and often difficult work is just weeks away from completion. But it is so. We now turn our attentions to the ongoing needs of the collection, to becoming an ever more exciting visitor destination, to achieving true excellence in our scholarly activities, and to planning for the second stage of building development. The first chapter is almost complete - but the story has only just begun.

T.L. Rodney Wilson
Director

"injuring" the specimens and scribbling in the Visitor's Book.

The other papers in this year's *Records* deal with forms of Maori canoe prows, a new fossil species of pua, and fossil evidence that sea lions bred at North Cape before Maori settlement. The

next issue is in preparation with six articles being processed.

Copies of the *Records* may be read in the Museum library, or purchased from: Publications, Auckland Museum, Private Bag 92018, Auckland. The cost is \$35 (including GST and p&p to a NZ address).

HOLIDAY PROGRAMMES

Christmas Holidays

Fun 10 minute activities will be running in Weird & Wonderful from 10-12 noon and 2-4pm every day of the holidays. These cost just \$2, or \$1 for Dinomites.

January Workshops

Spectacular Specs!

Thurs 13th, Fri 14th, Sat 22nd, Sun 23rd

Decorate a pair of cardboard cutout specs in your own zany designs. Go wild with feathers, crayons, sequins, cellophane!

Express your individuality! Activity will be in Treasures &

Tales Discovery Centre. 10-12 noon and 1-4pm. Activity takes 20 minutes. No bookings required. Suitable for all ages. \$3.50 or \$2.50 for Dinomites.

Ring Making

Sat 15th, Sun 16th, Thurs 20th, Fri 21st

Design and make a real silver ring with Brian Adam, Jeweller. Workshop is 2 hours long. 10-12 noon or 1-3 pm. Suitable for ages 10-16 years. Children under 10 must be



City gallery to open

City, one of the new galleries about to open, tells the dynamic story of Auckland, a metropolis that grew from virtually nothing to a million people in two long lifetimes. Auckland's history is fast history. The gallery begins with William Hobson, the founding governor, and the

accompanied by an adult. Meet Megan in the foyer of the Museum at 10am or 1pm. \$25 per participant. Spaces are limited so bookings are essential. Phone Monica (09) 306 7040. Bookings are confirmed with payment. Please send cheque to Education Bookings Office, Auckland Museum, Private Bag 92018, Auckland.

Dinosaurs!

Mon 17th, Mon 24th

Travel back in time to the age of dinosaurs! Make your own clay dinosaur model with Florence.

Maori sponsors of early Auckland. It runs through the timber rushes, gold rushes, immigration and stockmarket booms of colonial Auckland's history.

The development of the Queen City in the 20th century is traced through the ways it saw itself and the

Children must be age 7-12 years. Sessions will be held from 10-12 noon and from 1-3pm. Meet Florence in the foyer of the Museum at 10am or 1pm. Spaces are limited so bookings are essential. Phone the Bookings Office on 306 7040. Bookings are confirmed with payment.

Extra free workshops are run exclusively for Dinomite members. These include "Behind the Scenes Tours" of the Museum and Computer workshops.

Navigator

7 December 1999-7 March 2000

A collection of jewellery by German born, New Zealand domiciled jeweller Christine Hafermalz-Wheeler.

Early Pacific Navigators provide the inspiration for this collection of precious jewellery on display in the Logan Campbell Gallery.

Sculpture 2001

17 December 1999-26 March 2000

In celebration of the new

world – photographs, radio, cinema and television. Each is represented by a tailor-made audio-visual display. Cinema is seen from the comfort of His Majesty's Theatre's actual seats. Icons of Auckland feature too, including Jean Batten, Farmers Department Store, Sir Edmund Hillary and Freda Stark. A huge graphic, "The People's Wall", explores the diverse ethnic mix of Auckland's population.

The last section of the gallery invites visitors to look at city futures and includes an audio-visual presentation that crosses science fiction with town planning, and introduces a new computer game – Night Mayor. City was designed by a team led by eminent historian Professor James Belich.

millennium a group of sculptors present their designs for public sculpture in the Auckland Domain.

On display in the Mezzanine Gallery the artists use a variety of styles and materials including marble, granite, glass, bronze, lead and copper.

FOR YOUR INFORMATION

Auckland War Memorial Museum
Private Bag 92018
Auckland
New Zealand

Telephone 09 309 0443

InfoLine 09 306 7067

Facsimile 09 379 9956

Director Dr TL Rodney Wilson

Hours 10am to 5pm daily

Open every day except

Christmas Day

For information on

Membership ring

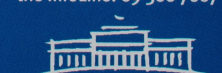
09 309 0443 x883

For information on

exhibitions, public

programmes or events ring

the InfoLine: 09 306 7067



Auckland Museum

To Ripu Whakahu