



Auckland War Memorial Museum

# NEWS

Auckland Institute and Museum  
Private Bag, Auckland. Phone (09) 390-443  
Registered at Post Office Headquarters  
ISSN 0111-2252

Number 28  
December 1986

## Another Year

1986 has been another very eventful year for Auckland Museum, and a successful one. The display highlight was of course the completion and opening of **Nga Mahi**, the first stage of the Maori display development. Over 66,000 people visited our first major touring exhibition for many years, *Oro del Peru*, presented with the sponsorship of Fletcher Challenge. There have been several other special exhibitions arranged by Museum staff, especially the Display and Applied Arts Departments. Our busy schedule of exhibitions organised by other organisations such as the Auckland Studio Potters and the Society of Artists in Glass has continued, and of course at the beginning of the year we were treated to the display and performances of Musical Instruments through the Ages.

Our first woman President, Sheila Weight took office at the Annual General Meeting. The first members' field trip, at least in recent years, is reported on in this issue of the News. We have published the first comprehensive guide book to the Museum's collections. We have a new Ethnologist, a new Accountant, a new Shop Manager, a new Assistant Curator of Applied Arts, and shortly a new Assistant Director.

In with all these new things, we have of course continued to do all the ordinary things — cared for our collections, displays and building, kept them clean and tidy and growing and well used. We've answered letters and phone enquiries, given tours, found books for readers, sold books to customers, cooked — not the books, but scones and other things. There've been the extramural activities of our Extension and Liaison Services, our participation in national and international events like *Te Maori*, and organisations like UNESCO, the Historic Places Trust and the Museums Association. We satisfied most of our enquirers, and most of our visitors, we satisfied the Auditor. We probably didn't satisfy ourselves, but that means there's still a challenge for next year and the one after.

May I say thank you, to all the staff, paid and unpaid, for your work in 1986, to the President and Council for your support and effort, to our members for your interest and continuing assistance, to the local authorities for your financial contributions, and to all our other visitors, readers and supporters for giving us our *raison d'être*. A Merry Christmas and a Happy New Year to you all.

Stuart Park  
Director



## Te Waka Huia

Something museums always endeavour to portray in their displays of the culture of any group of people is precisely that the inanimate objects were made and loved and used by living people. This is especially important when the descendants of those who made them are part of the society in which we live. So it is with pleasure that we have welcomed the Maori cultural group **Te Waka Huia** into the Museum, to give their twice daily performances of Maori song, dance and myth.

**Te Waka Huia** is the Maori cultural group, lead by Maori language tutor Ngapo Wehi, which won the first prize in the National Cultural Competitions at Labour Weekend this year. A smaller group of members of that club has been formed to perform professionally in the Museum. The group is being supported initially by a grant from the Maori Initiatives Fund, but they hope to become self supporting before very long.

Visitors are welcomed in the Museum galleries, and are then invited into the Auditorium for a performance of song and dance. An admission fee is charged for the performance in the Auditorium though the activities in the museum galleries are not charged for, since it is a public place. The new venture was launched recently with a special performance for the Minister of Maori Affairs, the Honourable Koro Weterere. Mr Weterere spoke of his pleasure at seeing such an activity in the Museum, and at the fact that a Maori group had taken the initiative to undertake such a tourist promotion.

The response from Museum visitors has been enthusiastic, no doubt because of the very high standards of the performers. Bring your friends and visitors along to see a performance — now you don't have to go to Rotorua to see a Maori concert party.

## Members' Field Trip

In the last **News** we advised of the first field trip we have arranged for members. Forty members and friends joined President Sheila Weight and staff members Stuart Park, Nigel Prickett and Sherry Reynolds on a most enjoyable and enlightening trip to sites of the opening stages of the first Waikato War of 1863. All those present valued the opportunity to see these sites on the ground, and hear Nigel's cogent explanations of the engagements which linked them. Many of the party had driven past these sites for years, without knowing they were there — many are within sight of the Highway 1.

The response to the announcement of the field trip was overwhelming, and we filled our bus from the mail on the first day after the **News** arrived in members' letterboxes. This was encouraging for us, but inevitably disappointing for those who missed out. We're sorry, but rest assured that the strength of the response means that there

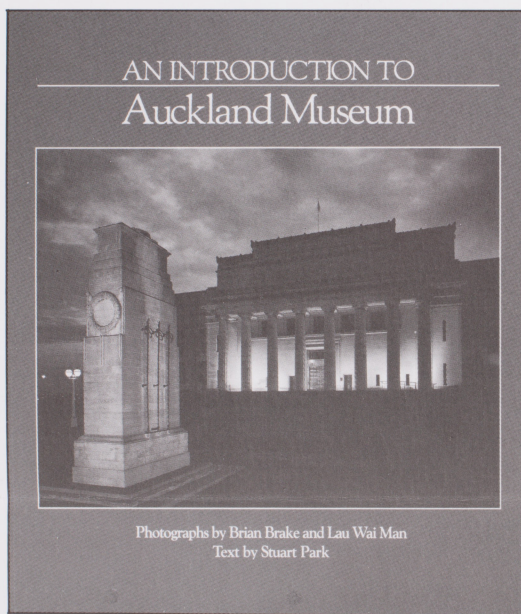


will be further opportunities. We canvassed those who did attend on the types of trips they would like to have arranged for members, and we have a wide ranging list.

Some of the trips are quite ambitious, involving several days and even trips to Sydney and elsewhere. The subjects cover

almost all the Museum's fields of interest, in natural history, history, anthropology and the decorative arts. If you have any ideas or suggestions, please let us know.

Our photo shows Nigel Prickett explaining to members features of Te Wheoro's redoubt at Rangiri.



### AN INTRODUCTION TO Auckland Museum



Photographs by Brian Brake and Lau Wai Man  
Text by Stuart Park

An unusual function took place at the Museum recently, in an unusual venue — the roof! The first comprehensive book illustrating the Museum's collections, their strength and diversity was launched by Museum President Sheila Weight.

**An Introduction to Auckland Museum** is a wonderful new full colour book about the treasures of the Auckland Museum. It has over 170 colour photographs by internationally renowned New Zealand photographer Brian Brake, with Lau Wai Man. Brian Brake has already photographed Maori and Pacific objects from this Museum for the book **Art of the Pacific** and for publications associated with **Te Maori**.

In this new book, however, Brian has turned

his photographer's eye to the whole scope of Auckland Museum, from the decorative arts to natural history and military history. This was a new experience for him, the results of which are quite magnificent. With an informative text and captions by Museum Director Stuart Park, this 60 page book describes and illustrates the history and development of New Zealand's largest museum. Included are Auckland Museum's outstanding collections of Maori and Pacific art and culture, New Zealand, Asian and European decorative arts and crafts, natural history and military and maritime history.

We are confident that this book will be very popular with all those who know and love Auckland Museum and its collections. Its appeal will be to Aucklanders and visitor alike, and it makes a splendid gift or

## Stan Brooker

The death occurred recently of one of the Museum's Honorary Life Members. Mr S.G. Brooker was elected to Life Membership in 1943. He was elected to Council as a representative of the Members in 1954, and served continuously on Council in various capacities until 1982. Stan was President from 1964-1966, Vice President from 1966-1976, and members' representative again from 1976-1982. In recognition of his long and outstanding service to the Museum, Stan was elected to Honorary Life Membership in 1982.

Stan's contribution to the Museum did not stop there. He was a long serving volunteer assistant in the Museum Library, and an enthusiastic volunteer guide. He represented the Museum in many Royal Society activities, being a Council member of the Royal Society of New Zealand from 1954-1966. He edited the journal of the Australian and New Zealand Association for the Advancement of Science. With Professor Cambie and Museum Botanist Bob Cooper he produced a museum handbook on medicinal plants of the Maori in 1961, and collaborated with them again on a beautifully illustrated edition published by Heinemanns more recently.

Stan Brooker had a long involvement in chemistry in industry, especially in the field of edible fats and oils. He was an Honorary Fellow of the New Zealand Institute of Chemistry, and an Honorary Fellow of the New Zealand Institute of Food Science and Technology.

Stan Brooker's cheerful, helpful presence, his endless store of jokes and his strong but quiet support will long be remembered at Auckland Museum.

souvenir of Auckland for your overseas guests. Already copies have made their way as far as Sweden, as well as the United States, Great Britain and Australia.

**An Introduction to Auckland Museum** is available now from the Museum Shop, at \$14.95, inclusive of GST.

## Still De

**Nga Mahi**, the first Museum's Maori exhibition, officially opened in 1987. It was mentioned in the **News** as a proving very popular. Its absolutely final exhibition must await the completion of the Auckland tour of Te Whare o Te Atua. Auckland Museum's important taonga are on display to the exhibition. The exhibition is a proud and stern challenge to the "Early Art" section. The photographs on the photographic reproduction in front of the pataka from Te Kaha in the carvings are a magnificent gallery since they are examples of Maori existence.

While it will be late treasures in Te Maori Museum, redevelopment of other areas of our pataka **Te Puawhaki** has been turned to the central Maori. Both the house and repositioned wall. This space has an advantage by the group, mentioned. After some more refurbishing, and further displays, will be carpeted in 1987.

Meanwhile, there is in the eastern end, obsolete by the decision is now closed. It is redeveloped in an entitled **Nga Iwi**.





lds of interest, in  
thropology and  
ave any ideas or  
know.  
ckett explaining to  
heoro's redoubt

er

ly of one of the  
embers. Mr  
o Life  
as elected to  
e of the Members  
uously on Council  
1982. Stan was  
Vice President  
bers'  
1976-1982. In  
outstanding  
an was elected to  
in 1982.

Museum did not  
serving volunteer  
brary, and an  
e. He  
n many Royal  
Council member  
y Zealand from  
ournal of the  
nd Association for  
ce. With  
seum Botanist  
a museum  
ants of the Maori  
with them again  
dition published  
ntly.

volvement in  
pecially in the field  
was an Honorary  
Institute of  
ry Fellow of the  
ood Science and  
lpful presence,  
and his strong but  
remembered at

our overseas  
ve made their way  
as the United  
ustralia.

and Museum is  
seum Shop, at

## Still Developing

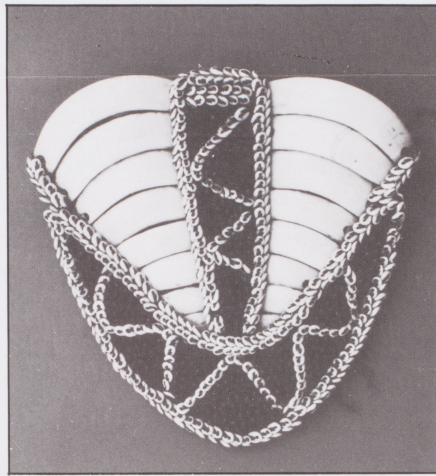
**Nga Mahi**, the first stage of Auckland Museum's Maori display development was officially opened in August, as we mentioned in the last **News**. The display is proving very popular, though it's not yet in its absolutely finished state. For that we must await the completion of the New Zealand tour of **Te Maori**, and the return to Auckland Museum of a number of extremely important taonga which have been on loan to the exhibition. The Doubtless Bay canoe prow and stern carvings are represented in the "Early Art" section of **Nga Mahi** by photographs only. Similarly, a full size photographic replica substitutes for the front of the pataka (storehouse) **Te Potaka** from Te Kaha in the Bay of Plenty. These carvings are a major focus of the whole gallery since they are perhaps the finest examples of Maori stone tool carving in existence.

While it will be late 1987 before the many treasures in **Te Maori** return to Auckland Museum, redevelopment work proceeds in other areas of our Maori displays. The large pataka **Te Puawai o Te Arawa** has recently been turned to create a large open space in the central Maori Gallery, directly in front of both the house **Hotunui** and the prow of the repositioned war canoe **Te Toki a Tapiri**. This space has already been used to advantage by the Maori performance group, mentioned elsewhere in this issue. After some more carpentry and refurbishing, and the installation of some further displays, the central Maori Gallery will be carpeted and completed by July 1987.

Meanwhile, there has been a lot of change in the eastern end of the gallery. Rendered obsolete by the displays on **Nga Mahi**, this section is now closed to the public. Before it is redeveloped in its final form (tentatively entitled **Nga Iwi**), it is being put to other

uses. At present it has become a repository for the Museum's reserve collection of Maori carvings, while a mezzanine is installed in the Maori carving store to improve storage and access conditions there. When the carvings are moved back into the renovated store early in 1987, the display gallery will be readied for **Te Aho Tapu** ("The Sacred Thread"). This will be a major exhibition of Maori cloaks and weaving, to coincide with and complement the showing of **Te Maori**. This will be a busy period for the Museum, since we will also be showing the major touring exhibition **Maori Art Today**, and an exhibition of nineteenth and early twentieth century photographs of the Maori.

Our photograph shows a section of the closed off gallery, with the carvings temporarily stored in it.



*Breast ornament from Papua New Guinea, one of the many fine examples of beadwork from Auckland Museum's extensive reserve collections. A special exhibition of this material "BEADS", will be on view during the summer holiday period, from 20 December until 1 February 1987.*



## Presidents' Tea

As readers will know, Sheila Weight recently took office as the President of the Auckland Institute and Museum. Mrs Weight has a number of plans and ideas she wants to implement during her term of office, and some of them she has already made a start on.

One of her first acts was to honour her predecessors as President. At an informal but very pleasant function held in the Museum Council Room, Mrs Weight entertained five past Presidents of the Auckland Institute and Museum with their wives, to afternoon tea. Mrs Weight was also joined by her husband Peter, Director Emeritus Graham Turbott, and Director Stuart Park.

Sadly, Stan Brooker had died only a few days earlier, and Lt. Col. Hughes was unable to attend. It was however a most notable gathering of past Presidents, a day on which probably the greatest number of Presidents of the Auckland Institute and Museum has ever gathered in the Museum. Present were Mr J.H. Rose (President 1958-1961) and Mrs Rose, Mr G.W. Frater (1973-1976) and Mrs Frater, Dr J.D. Atkinson (1976-1980), Dr R.H.L. Ferguson (1980-1983) and Mrs Ferguson, and Mr R.E. Thomas (1983-1986) and Mrs Thomas.



## Papal Visit

Auckland Domain was a very busy place in late November, as preparations were made for the visit by Pope John-Paul II. Preparations included the Museum, which was the base for the international Press corps, and was also used by television and police staff. The Museum opened at 9am and closed at 2.30pm, the varied hours being arranged to cater for the crowds, while allowing the building to be made secure before the start of the Mass in the Domain.

The Maori carving of the Madonna and Child which is featured in Nga Mahi was lent

for display on the dais beside the Pope during the Maori welcome. Assistant Ethnologist Te Warena Taua was involved in the welcome by Ngati Whatua to visiting tribes and guests from the Pacific Islands, and he also participated in the Maori welcome to His Holiness.

Smaller numbers than anticipated meant that the Coffee Lounge and Shop staff were less busy than we expected, but the day went very well. Museum Director Stuart Park conducted two unscheduled tours of the Museum for members of the Press corps, and gave an interview to the BBC World Service.

Our photo gives a Museum's eye view of the events of the day.

## Staff News

Members may be aware, though we haven't told you formally, that the Museum has been seeking an Assistant Director. The Museum Council has been concerned to strengthen the administrative area of the Museum's work by appointing a full time Assistant Director. Unlike former Assistant Directors Baden Powell, Bob Cooper, Trevor Bayliss and Dave Simmons, the appointee will not have any specific duties within a curatorial department of the Museum. Rather the Assistant Director will assist the Director in the day to day management of the Museum, and strengthen the museological aspects of the Museum's endeavours. (We're sorry about that word, museological, but it's really the only one there is!)

The position was advertised in October, and attracted a strong response from throughout New Zealand and overseas. Council's appointments committee has met several times to conduct interviews and consider the best appointment to recommend to Council. This **News** is being written before Council has made the appointment, though an announcement will no doubt have been made before you read this. We will tell you about the appointee in the next issue.

Recruiting staff in New Zealand museums often involves "stealing" staff from other museums, as well as training new entrants to the profession. We were very pleased earlier this year to be able to "steal" Roger Neich from the National Museum to take up appointment as Ethnologist here. This pleasure was heightened recently however when we learned that as a result of our poaching, a former staff member of Auckland Museum had returned to the museum profession by taking up Roger's position in Wellington.

Janet Davidson was the first Vaile Archaeologist on the staff of Auckland Museum, serving here from 1966 until 1979. Janet has been living in Dunedin continuing her writing and research, but will move to Wellington to take up her appointment in 1987. Since leaving Auckland Janet has been awarded a Doctorate in Science, and

the Fellowship of the Royal Society of New Zealand. We're delighted to see these attainments, and her museum experience at Auckland no doubt, being recognised by this appointment. Congratulations Janet.

Congratulations are also due to another staff member. Merle Williams, our Accounts Clerk, was elected to the Mount Eden Borough Council at the local authority elections in October. There are several Mount Eden residents on the staff, Councillor Williams, so guess who we'll be calling about that stray dog or noisy party! Congratulations Merle.

Once again, the Museum has several University students working for it over the summer holidays. There are eight students this year, in spite of a reduced Labour Department subsidy for the scheme, and they are assisting with a wide variety of tasks in several museum departments: some have worked for us in a similar capacity before. We're very pleased to have you with us for the summer.

The Museum is not as good as it should be about recording its own history — we're too busy with other peoples'. Staff photos are therefore something of a rarity, though we do have one taken periodically. This year was a rather special occasion, since those staff who had been here for more than ten years (and some more than twenty) had a special photo taken as well. Our long serving staff are:

(Rear) John Wadham, Extension Officer; Gordon Maitland, Assistant Librarian; Brett Stephenson, Marine Biologist; Walter Cernohorsky, Malacologist; Ian Thwaites, Librarian; Bert Cadman, Education Officer. (Front) Keith Wise, Entomologist; Rie Fletcher, Library Assistant; Judy Smith, Honorary Curator of Textiles; Merle Williams, Accounts Clerk; Nanda Watson, Shop Assistant; Esmay Ulenberg, Coffee Lounge Assistant; Pam Towers, Accounts and Education Service Assistant.



Auckland War Memorial Museum was erected in the Auckland Domain in 1929 and extended in 1960 as the Memorial to those from Auckland Province who died in two World Wars. It is administered by the Auckland Institute and Museum, whose origins go back to the first Auckland Museum of 1852. **Auckland Museum News** is issued free to members of the Institute and Museum, a group of friends and supporters of the Museum.

