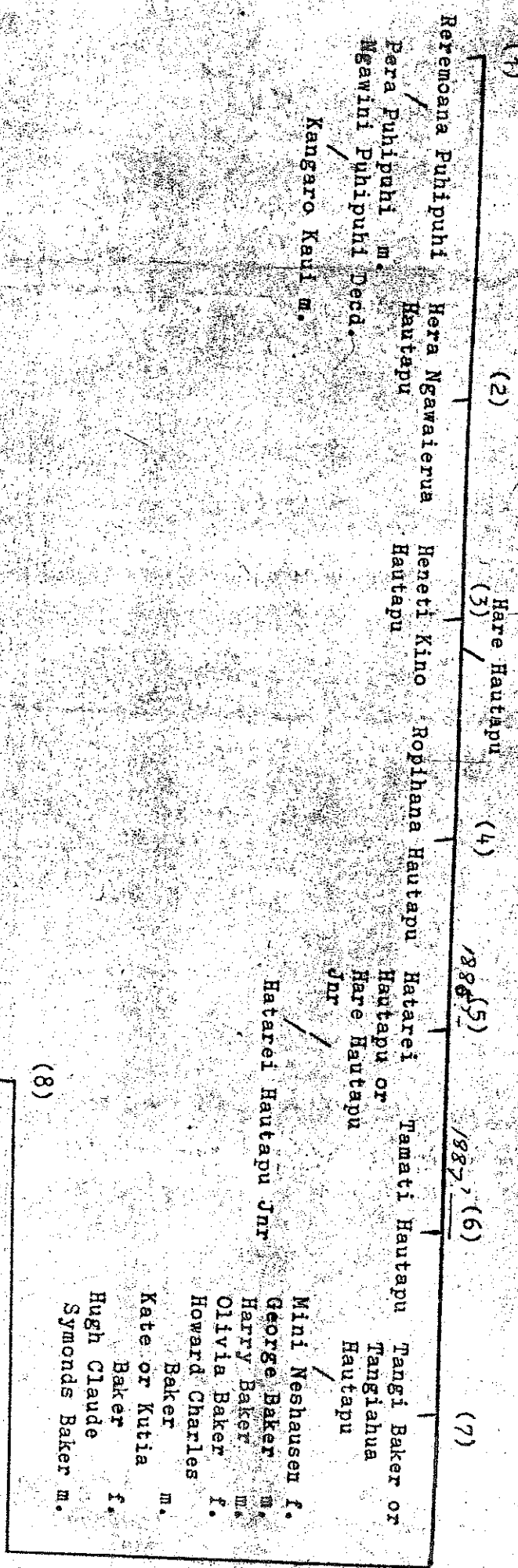


A son of Hare Hautapu (father) who died about 1918. Minutes recorded at Waiaipu Minute Book 107/282 show this family.

A son of Rinsatu Whare (mother). Minutes Gis Minute Book 60/114-6. (Rinsatu a daughter of Rahera Whariki.) Earlier minutes Wp 77/299 show that Hare Hautapu died 19.2.1918, also Wp 75/270.

*As Ormai 1889 (Hona) & Keirua*



*also known as Rinsatu Whare*

A son of Riwia Hautapu who died about 1910-1911. Minutes recorded at Wp 108/91 show this family.

- (2 above) Ngawalerua Pahau
- (1 above) Matakino Kauri
- (3 above) Ropihana Hautapu
- (4 above) Hatarei Hautapu
- (5 above) Tangiahua Hautapu
- (6 above) Hiraia Hautapu
- (7 above) Hiraia Hautapu
- (8 above) Hiraia Hautapu

Wp 75/270 Give Ani Kato and Wi te Ika as parents of Hare Hautapu. If genealogy wanted a copy of these minutes would assist.